
Figures and figure supplements

Extreme adaptations for aquatic ectoparasitism in a Jurassic fly larva

Jun Chen, et al.

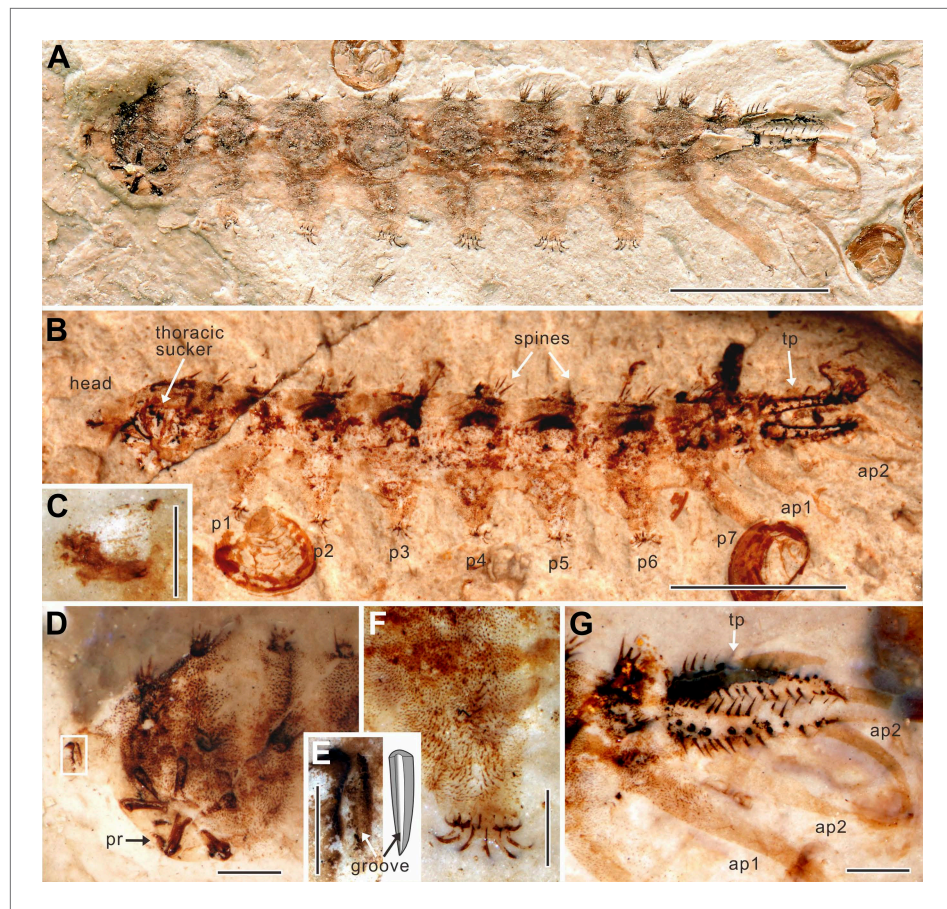


Figure 1. *Qiyia jurassica* from the Middle Jurassic epoch of Daohugou, China. (A) Holotype STMN65-1. (B) Paratype STMN65-2 under alcohol (horizontal mirror image). (C) Head capsule of paratype STMN65-2. (D) Head and thorax of holotype STMN65-1. (E) Enlargement and reconstruction of the mandible of holotype STMN65-1; note the longitudinal groove. (F) Fifth proleg of holotype STMN65-1; note stiff, upward directed bristles which are distinctly longer than setae on body. (G) Last abdominal segment of holotype STMN65-1. ap, anal papilla; p, proleg; pr, process of ridge; tp, terminal process. (Scale bars: 5 mm in A, B, 1 mm in D, F, G, and 0.5 mm in C, E). DOI: [10.7554/eLife.02844.004](https://doi.org/10.7554/eLife.02844.004)

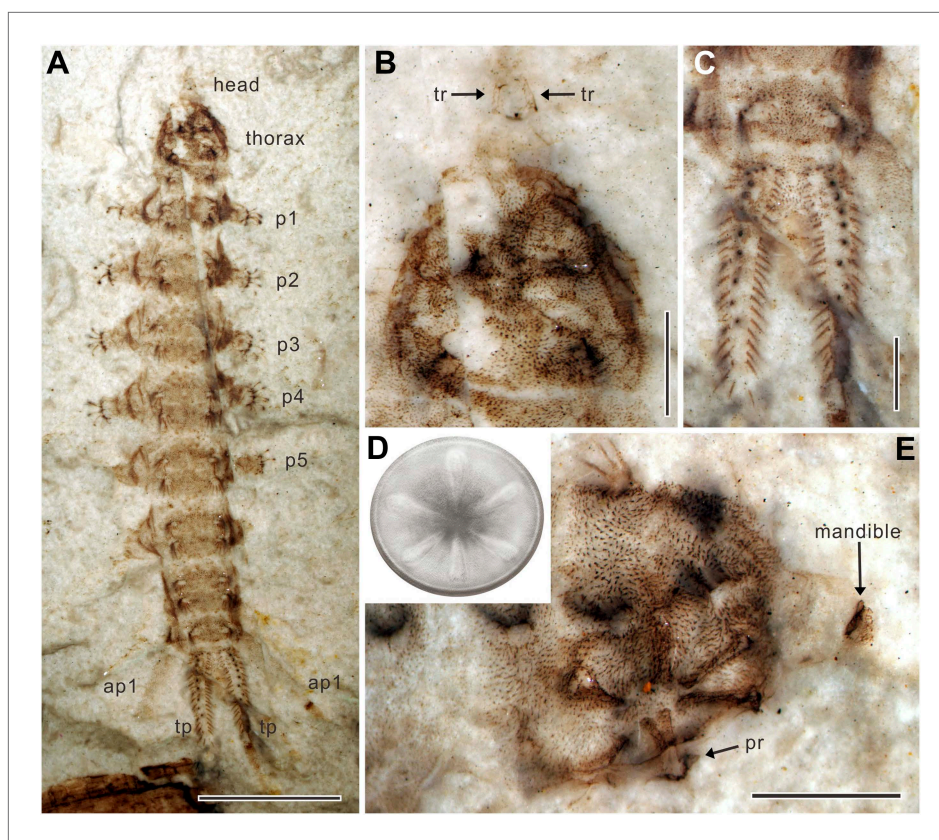


Figure 2. *Qiyia jurassica* from the Middle Jurassic epoch of Daohugou, China. (A) Paratype NIGP156982 under alcohol. (B) Head and thorax of paratype NIGP156982; note the underlying thoracic sucker. (C) Terminal processes of paratype NIGP156982. (D) Reconstruction of sucker. The sucker consists of a circular suction disc with central opening and thin peripheral area. Six robust, radially arranged ridges are covered by soft skin with small spines. (E) Head and thorax of paratype NIGP156984; note the deformed mandible. ap, anal papilla; p, proleg; pr, process of ridge; tp, terminal process; tr, tentorial rod. (Scale bars: 5 mm in A, 1 mm in B, C, E).

DOI: [10.7554/eLife.02844.005](https://doi.org/10.7554/eLife.02844.005)

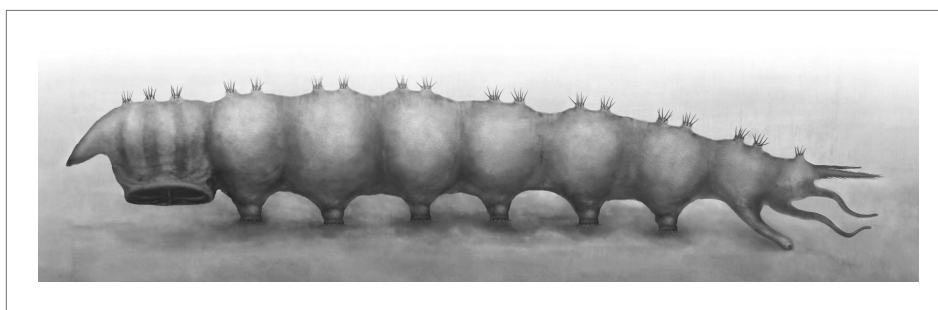


Figure 3. Reconstruction of *Qiyia jurassica* in lateral view.

DOI: [10.7554/eLife.02844.006](https://doi.org/10.7554/eLife.02844.006)

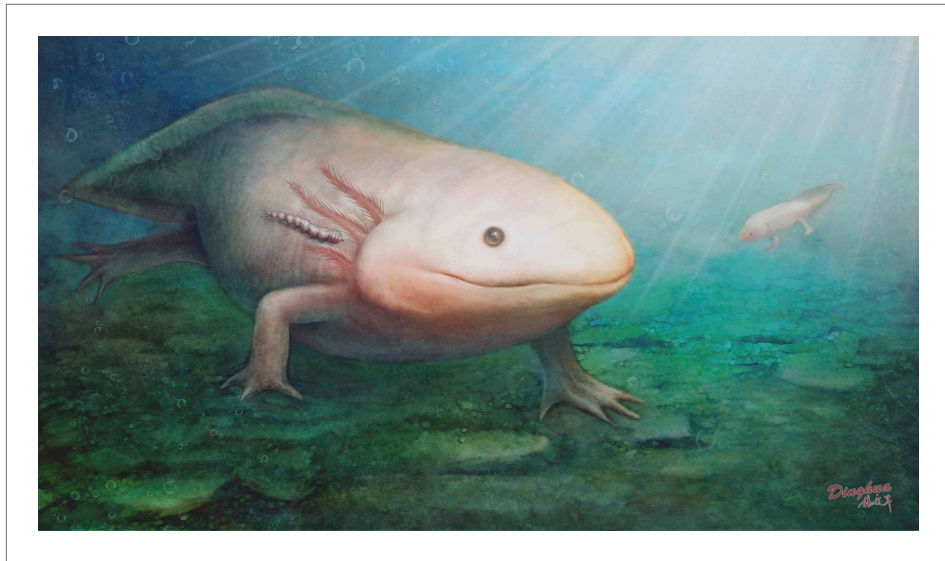


Figure 3—figure supplement 1. Ecological restoration of *Qiyia jurassica* from the Middle Jurassic epoch of Daohugou, China.

DOI: [10.7554/eLife.02844.007](https://doi.org/10.7554/eLife.02844.007)