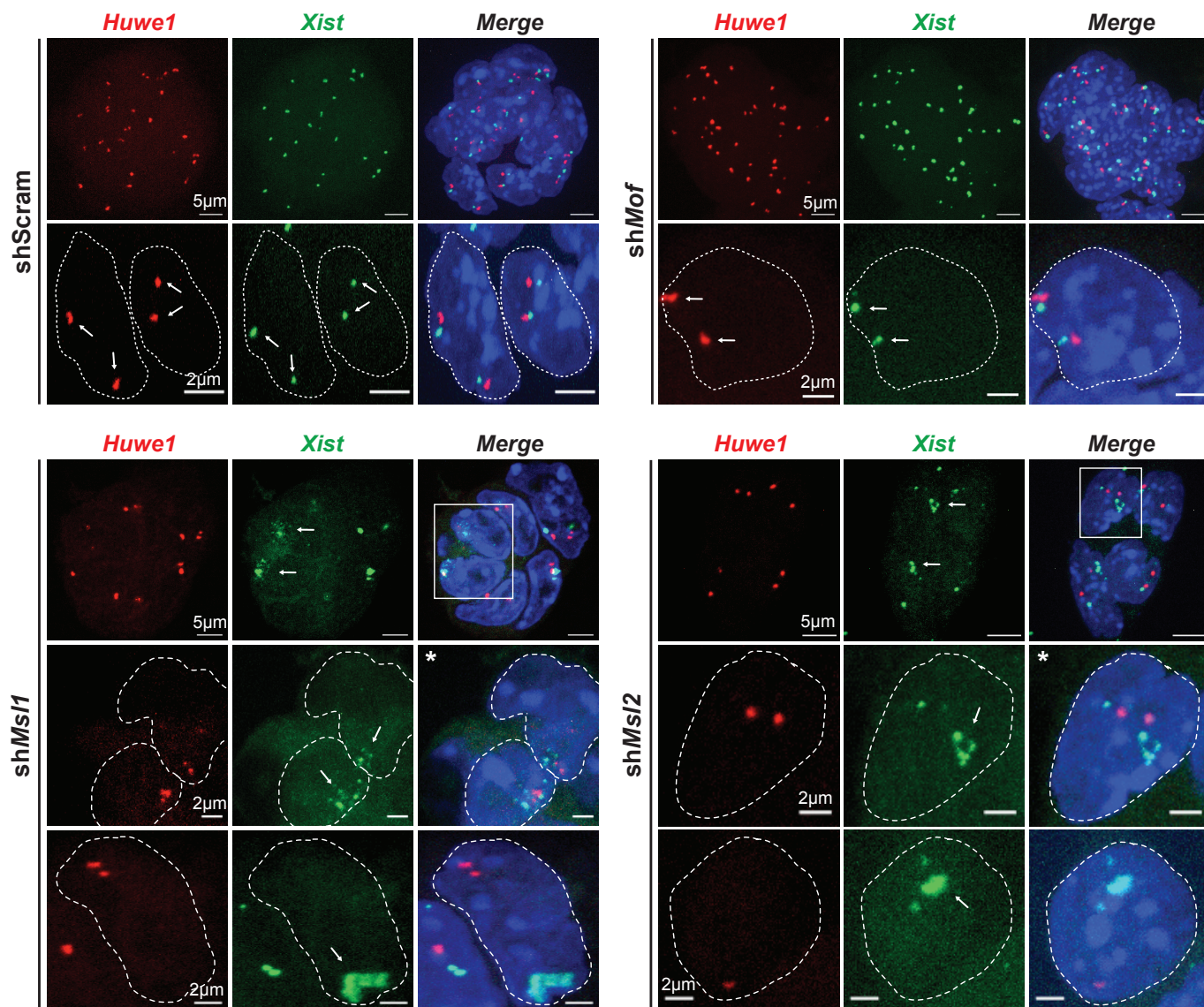
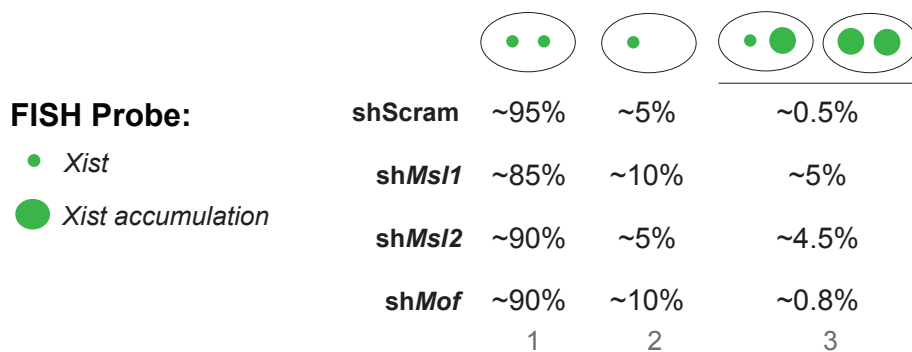


A



B



C

♀ ESC FISH Probe: *Xist* / *Huwe1*

| | shScram | shMof | shMsl1 | shMsl2 |
|---|---------|-------|--------|--------|
| Number of cells counted: | 454 | 245 | 185 | 226 |
| Number of cells with: 2 X-chromosomes | 430 | 219 | 166 | 215 |
| Number of cells with: 1 X-chromosome | 24 | 26 | 19 | 11 |
| Number of cells with: X-chromosomal coating | 2 | 2 | 10 | 10 |