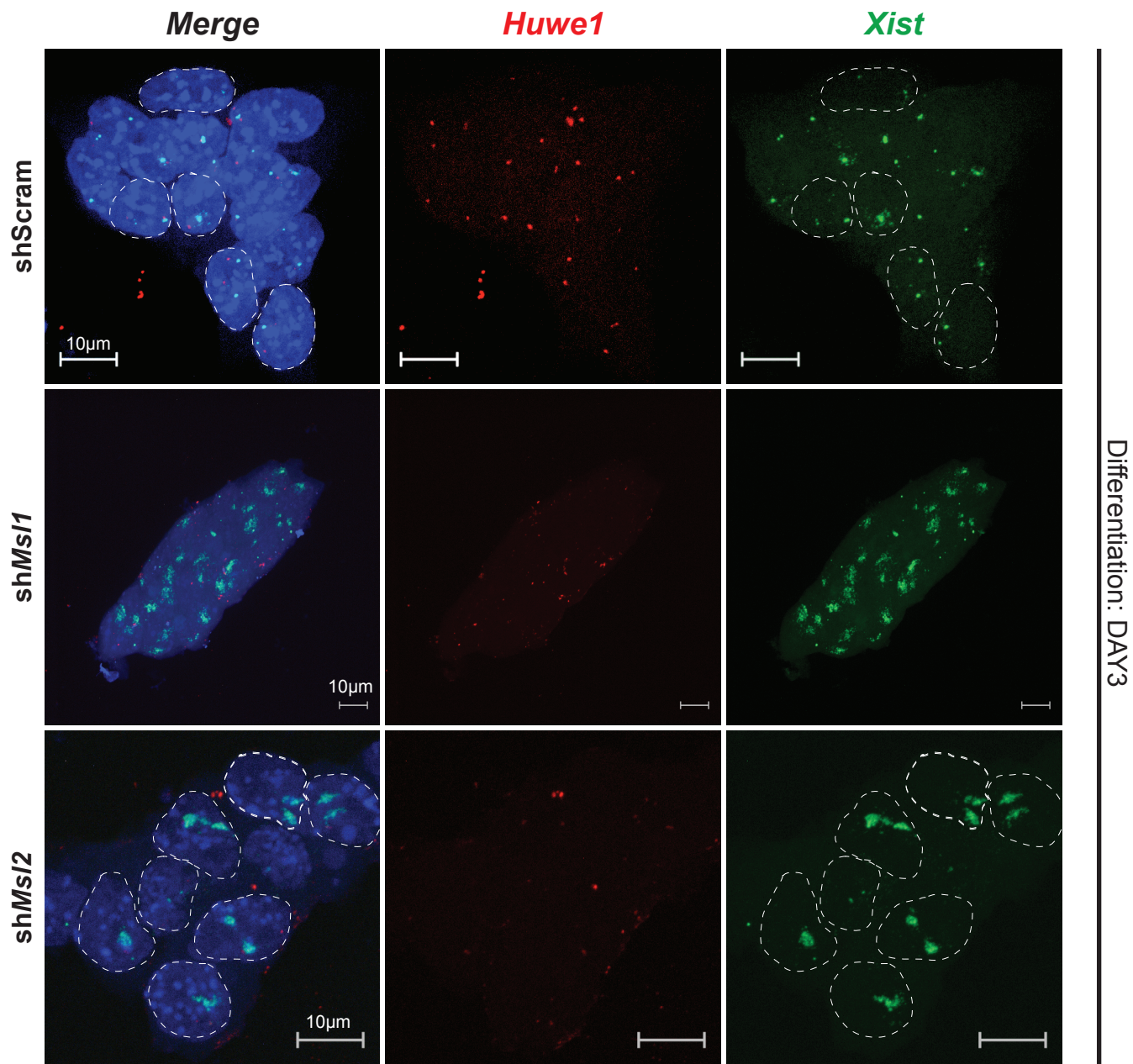


A



B

FISH Probe: <i>Xist</i> / <i>Huwe1</i>		shScram	shMsi1	shMsi2	shMof
Number of cells counted:		253	209	285	239
Number of cells with:	0 <i>Xist</i> Clouds ● ●	154 (60.9%)	77 (36.9%)	111 (38.9%)	118 (49.4%)
Number of cells with:	1 <i>Xist</i> Cloud ● ●	97 (38.3%)	110 (52.6%)	148 (52%)	113 (47.3%)
Number of cells with:	2 <i>Xsit</i> Clouds ● ●	2 (0.8%)	22 (10.5%)	26 (9.1%)	8 (3.3%)