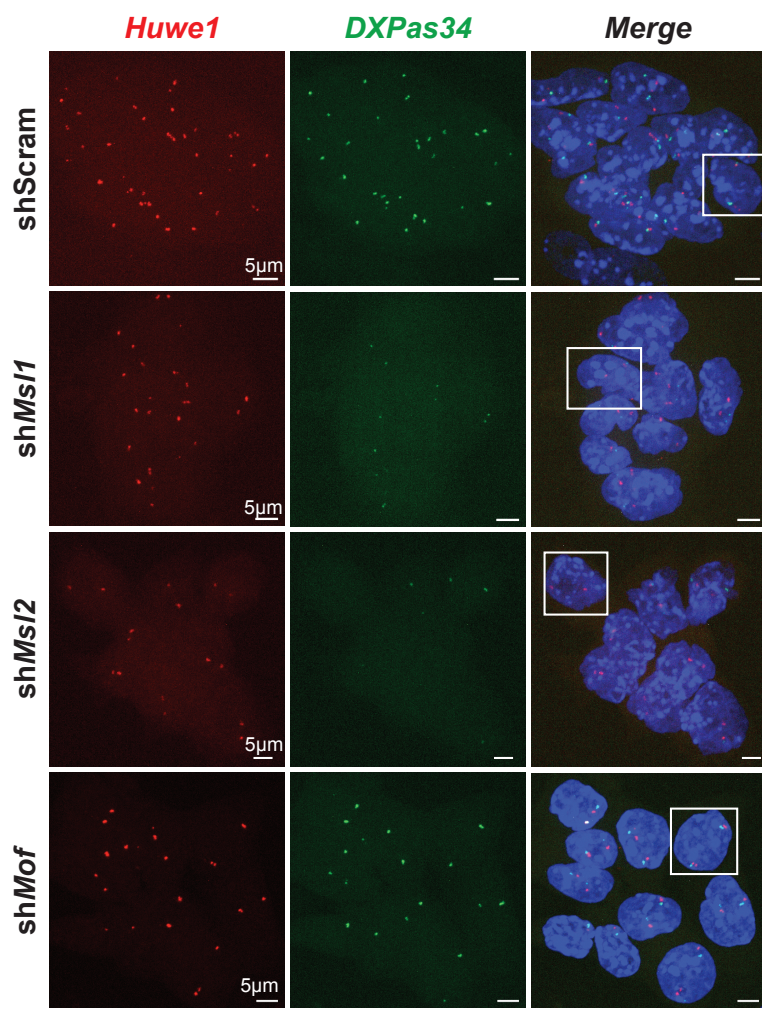
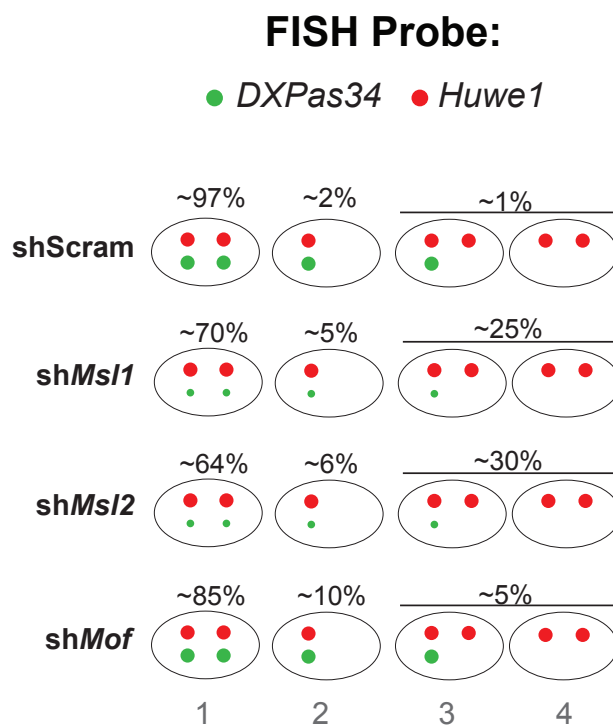
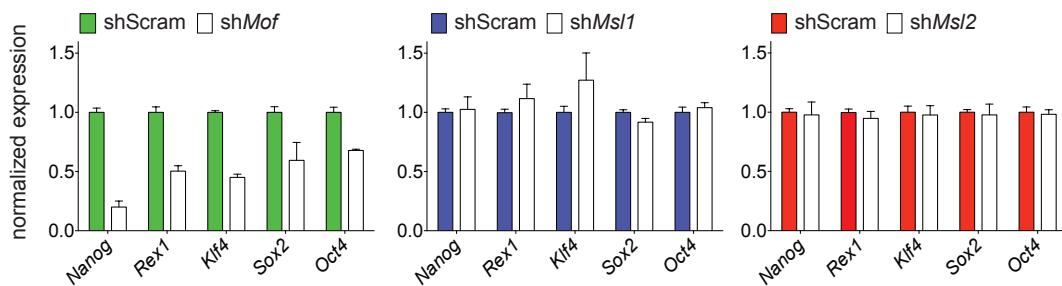


A**B****C**

FISH Probe: *DXPas34* / *Huwe1*

	shScram	shMof	shMsi1	shMsi2
Number of cells counted:	303	238	262	210
Number of cells with: 2 X-chromosomes	296	214	248	198
Number of cells with: 1 X-chromosome	7	24	14	12
Number of cells with: 2x <i>Huwe1</i> / 2x <i>Tsix</i> signal	292	202	187	134
Number of cells with: 2x <i>Huwe1</i> / 1x <i>Tsix</i> or 2x <i>Huwe1</i> / 0x <i>Tsix</i> signal	4	12	61	64

D**E**