

# Bacterial autolysins trim cell surface peptidoglycan to prevent detection by the *Drosophila* innate immune system

Magda Luciana Atilano<sup>1,2†</sup>, Pedro Matos Pereira<sup>3†</sup>, Filipa Vaz<sup>1</sup>,  
Maria João Catalão<sup>1</sup>, Patricia Reed<sup>3</sup>, Inês Ramos Grilo<sup>4</sup>, Rita Gonçalves Sobral<sup>5</sup>,  
Petros Ligoxygakis<sup>2</sup>, Mariana Gomes Pinho<sup>3</sup>, Sérgio Raposo Filipe<sup>1\*</sup>

<sup>1</sup>Laboratory of Bacterial Cell Surfaces and Pathogenesis, Instituto de Tecnologia Química e Biológica, Universidade Nova de Lisboa (ITQB-UNL), Oeiras, Portugal; <sup>2</sup>Genes and Development Laboratory, Department of Biochemistry, University of Oxford, Oxford, United Kingdom; <sup>3</sup>Laboratory of Bacterial Cell Biology, Instituto de Tecnologia Química e Biológica, Universidade Nova de Lisboa (ITQB-UNL), Oeiras, Portugal; <sup>4</sup>Laboratory of Molecular Genetics, Instituto de Tecnologia Química e Biológica, Universidade Nova de Lisboa (ITQB-UNL), Oeiras, Portugal; <sup>5</sup>Departamento de Ciências da Vida, Centro de Recursos Microbiológicos (CREM), Faculdade de Ciências e Tecnologia, Universidade Nova de Lisboa, Caparica, Portugal

**Abstract** Bacteria have to avoid recognition by the host immune system in order to establish a successful infection. Peptidoglycan, the principal constituent of virtually all bacterial surfaces, is a specific molecular signature recognized by dedicated host receptors, present in animals and plants, which trigger an immune response. Here we report that autolysins from Gram-positive pathogenic bacteria, enzymes capable of hydrolyzing peptidoglycan, have a major role in concealing this inflammatory molecule from *Drosophila* peptidoglycan recognition proteins (PGRPs). We show that autolysins trim the outermost peptidoglycan fragments and that in their absence bacterial virulence is impaired, as PGRPs can directly recognize leftover peptidoglycan extending beyond the external layers of bacterial proteins and polysaccharides. The activity of autolysins is not restricted to the producer cells but can also alter the surface of neighboring bacteria, facilitating the survival of the entire population in the infected host.

DOI: [10.7554/eLife.02277.001](https://doi.org/10.7554/eLife.02277.001)

\*For correspondence: [sfilipe@itqb.unl.pt](mailto:sfilipe@itqb.unl.pt)

†These authors contributed equally to this work

**Competing interests:** The authors declare that no competing interests exist.


**Funding:** See page 21

**Received:** 10 January 2014

**Accepted:** 20 February 2014

**Published:** 01 April 2014

**Reviewing editor:** Roberto Kolter, Harvard Medical School, United States

 Copyright Atilano et al. This article is distributed under the terms of the [Creative Commons Attribution License](https://creativecommons.org/licenses/by/4.0/), which permits unrestricted use and redistribution provided that the original author and source are credited.

## Introduction

Peptidoglycan (PGN) is a macromolecule composed of long glycan strands, cross-linked by short peptides, which surrounds most bacterial cells and forms a load-bearing mesh that sustains their shape. Enlargement and remodeling of the PGN mesh during bacterial growth and division requires not only the synthesis of new material, catalyzed by penicillin-binding proteins (PBPs), but also PGN hydrolysis to allow insertion of new material, carried out by PGN autolysins (Vollmer et al., 2008).

Despite its essential role, PGN may also be viewed as an ‘Achilles heel’ of bacteria during infection, as different hosts have specialized receptors that recognize PGN as a pathogen-associated molecular pattern (PAMP) and initiate an inflammatory response to eliminate invading bacteria. Examples of these receptors include LysM proteins in plants (Willmann et al., 2011), intracellular NOD-like receptors (NLRs) and Toll-like receptors (TLRs) in mammals (Chaput and Boneca, 2007), and peptidoglycan recognition proteins (PGRPs) in insects and mammals (Dziarski and Gupta, 2006).

PGRPs, originally isolated due to their high affinity to PGN (Kang et al., 1998), are used by *Drosophila* flies to distinguish between Gram-negative and Gram-positive bacteria, directly at the

**eLife digest** While most bacteria are harmless, some can cause diseases as varied as food poisoning and meningitis, so our immune system has developed various ways of detecting and eliminating bacteria and other pathogens. Receptor proteins belonging to the immune system detect molecules that give away the presence of the bacteria and trigger an immune response targeted at the invading pathogen.

Peptidoglycan is one telltale molecule that betrays the presence of bacteria. Peptidoglycan is found in the bacterial cell wall, and for many years it was assumed that the immune system detected stray fragments of peptidoglycan that were accidentally shed by the bacteria. However, it was later shown that the immune system could, under certain conditions, detect peptidoglycan when it is still part of the cell wall. This raised an interesting question: do bacteria use other methods to stop peptidoglycan being detected by the immune system?

Now, Atilano, Pereira et al. have found that enzymes called autolysins can conceal bacteria from the receptor proteins that detect peptidoglycan. These enzymes are needed to break the bonds within the peptidoglycan present in the rigid bacterial cell wall to allow the bacteria to grow and divide. 'Knocking out' the genes for autolysins allowed the receptor proteins from the fruit fly, *Drosophila*, to bind to the bacteria; however, the mutant bacteria were able to evade the immune system after they had been treated with the purified enzymes.

Atilano, Pereira et al. suggest that the autolysins trim the exposed ends of the peptidoglycan molecules on the surface of the cell wall, which could otherwise be detected by the host. The experiments also show that bacterial pathogens—including a strain of MRSA—with mutations that knock out autolysin activity trigger a stronger immune response in fruit flies, and are therefore less able to infect this host. Autolysins also help to conceal *Streptococcus pneumoniae*—a bacterial pathogen that is a common cause of pneumonia and infant deaths in developing countries—from detection by fruit flies.

The findings of Atilano, Pereira et al. highlight how bacteria employ a number of ways to evade detection. If similar behavior is observed when bacteria infect humans, autolysins could represent a new drug target for the treatment of bacterial diseases.

DOI: [10.7554/eLife.02277.002](https://doi.org/10.7554/eLife.02277.002)

level of PGN detection. This is achieved through specific PGRPs: PGRP-LC specifically recognizes DAP-type PGN, usually found in Gram-negative bacteria and Gram-positive bacilli, and activates the Imd pathway (Leulier et al., 2003), while PGRP-SA recognizes lysine-type PGN, which surrounds most Gram-positive bacteria, and activates the Toll pathway (Lemaitre and Hoffmann, 2007). Activation of either pathway results in a series of multiple defense reactions that include the production and secretion of antimicrobial peptides into the hemolymph of flies (Lemaitre and Hoffmann, 2007). In mammals, PGRPs can act as antibacterial agents due to their bactericidal and/or bacteriostatic activity, mediated by PGN hydrolytic activity (e.g. PGLYRP-2 [Dziarski and Gupta, 2006]) or by the binding of PGRPs to targets on the bacterial cell surface, which causes the activation of specific bacterial two-component systems, resulting in bacteria killing through a mechanism that includes membrane depolarization and production of hydroxyl radicals (Kashyap et al., 2011).

Bacterial PGN is concealed by an outer membrane in Gram-negative bacteria, or by layers of proteins and glycopolymers in Gram-positive bacteria. It is therefore usually assumed that an infected organism only recognizes PGN in the form of fragments released into the surrounding medium by the activity of different bacterial or host enzymes (Nigro et al., 2008). However, it has been recently shown that PGRP-SA can directly bind PGN at the bacterial surface in conditions such as the absence of wall teichoic acids (WTAs) (Atilano et al., 2011). Therefore, it is possible that bacteria may have developed different strategies to prevent host receptors from binding PGN on the bacterial surface, thus avoiding detection by the host innate immune system.

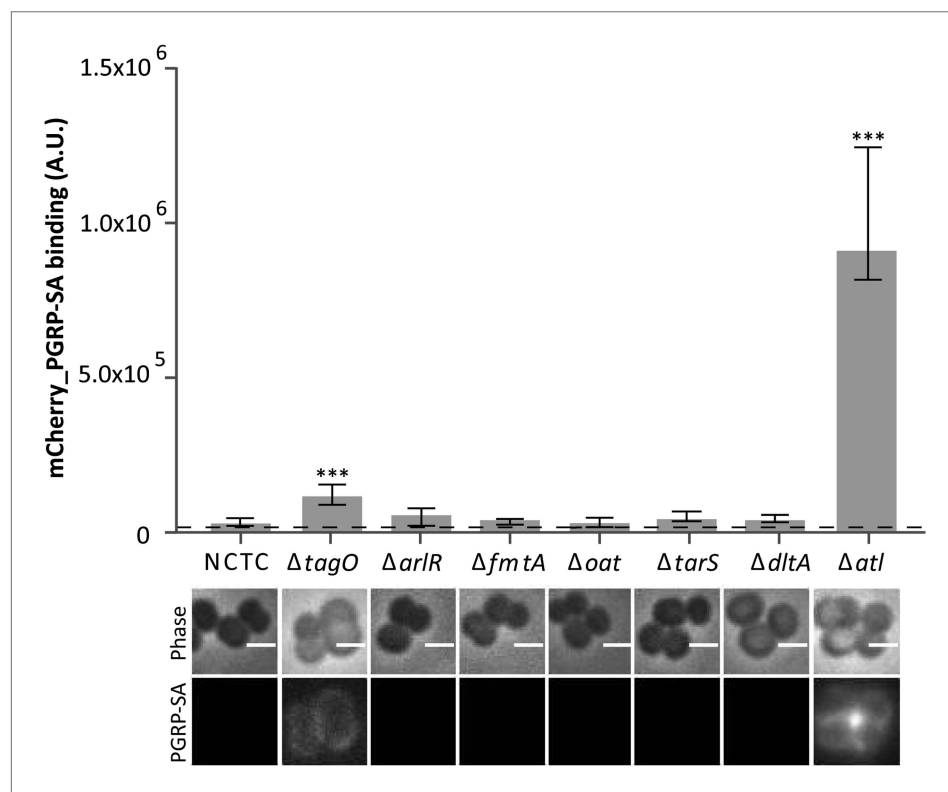
In order to look for molecules with a role in preventing bacterial recognition by the host, we used PGRP-SA, a host receptor circulating in the hemolymph of *Drosophila melanogaster*, to test if specific proteins involved in the metabolism of bacterial cell wall were required to conceal the PGN at the surface of the Gram-positive pathogenic bacterium *Staphylococcus aureus*. We have identified the

major autolysin Atl as an essential protein for concealing the bacterial PGN at the cell surface from host detection.

## Results

### PGN hydrolytic enzymatic activities encoded by the *atl* gene are required to conceal *S. aureus* from *Drosophila* PGN receptor PGRP-SA

In order to identify factors that Gram-positive bacteria use to conceal their PGN present at the bacterial cell surface from host recognition, we have constructed *S. aureus* null mutants lacking non-essential genes involved in PGN metabolism and determined the ability of a fluorescent derivative of PGRP-SA (mCherry\_PGRP-SA) to bind to their surfaces (**Figure 1**). Specifically, we tested mutants constructed in NCTC8325-4 *S. aureus* strain, expressing altered levels of autolysins ( $\Delta arlR$ ), lacking the major autolysin ( $\Delta atl$ ) or factors that modulate autolysin activity ( $\Delta fmtA$ ), producing non-O-acetylated peptidoglycan with increased susceptibility to lysozyme ( $\Delta oat$ ), or producing altered WTAs lacking attached  $\beta$ -O-GlcNAc ( $\Delta tarS$ ) or D-alanyl residues ( $\Delta dltA$ ). A mutant lacking the major autolysin Atl, a PGN hydrolase, was identified as the most severely impaired in its ability to avoid recognition by mCherry\_PGRP-SA.



**Figure 1.** *Staphylococcus aureus* cells lacking the major autolysin Atl are better recognized by mCherry\_PGRP-SA. Exponentially growing bacteria from the parental NCTC8325-4 (NCTC), and its mutant strains lacking genes involved in cell wall metabolism (see main text for details) were incubated with mCherry\_PGRP-SA in 96-well plates. Cells were pelleted by centrifugation and unbound protein was washed with PBS. mCherry\_PGRP-SA bound to each bacterial strain was quantified using a fluorescent image analyzer ( $n \geq 10$  wells for each strain). Results are shown as the median with 25% and 75% inter-quartile range. The dashed line represents the median value obtained when bacteria were absent. Statistically significant differences ( $p < 0.001$ , indicated by asterisks) were observed only between mCherry\_PGRP-SA binding to the parental strain and mutants NCTC $\Delta tagO$  and NCTC $\Delta atl$ . mCherry\_PGRP-SA binding to bacterial cells was also imaged by fluorescence microscopy. The top panels show phase-contrast images of bacteria (white scale bar represents 1  $\mu$ m) and the bottom panels show the mCherry\_PGRP-SA binding to their surface. Binding of the protein was observed for NCTC $\Delta tagO$  and NCTC $\Delta atl$ , with the later exhibiting the highest binding.

DOI: [10.7554/eLife.02277.003](https://doi.org/10.7554/eLife.02277.003)

PGN modifications, namely the attachment of teichoic acids or the degree of PGN polymerization (defined as the ratio between the amount of polymerized muropeptides and the amount of monomeric muropeptides present in the PGN macromolecule), have been previously associated with changes in the recognition of *S. aureus* PGN by host receptors (Filipe et al., 2005; Atilano et al., 2011). However, an *S. aureus atl* null mutant produces a PGN with a muropeptide composition similar to the parental strain (Figure 2A), that is, it shows no increase in the amount of polymerized muropeptides, which were previously reported to be better inducers of an innate immune response than monomeric muropeptides (Filipe et al., 2005). Moreover, the *S. aureus atl* null mutant produces WTAs (Figure 2B), indicating that the mechanism to conceal PGN dependent on the presence of *atl* is new, and different from that previously reported for a WTA mutant (Atilano et al., 2011). In agreement, the simultaneous deletion of *tagO* and *atl* had a synergistic effect on exposing the surface PGN to host recognition (Figure 2C).

The *atl* gene encodes a polypeptide that is cleaved into two proteins capable of digesting PGN: an amidase (AM), which cleaves the amide bond between peptides and glycans, and a glucosaminidase (GL), which cleaves glycan strands (Figure 3A). To determine which one of these activities was required for the role of AtI in PGN concealment, we constructed *S. aureus* strains expressing, from the *atl* native chromosomal locus, AtI mutants with impaired amidase activity (AM<sup>H265A</sup> [Bose et al., 2012]), glucosaminidase activity (GL<sup>E1128A</sup> [Bose et al., 2012]), or both (AtI<sup>H265A/E1128A</sup> double mutant) and confirmed the absence of the expected hydrolytic activity in a zymogram (Figure 3B).

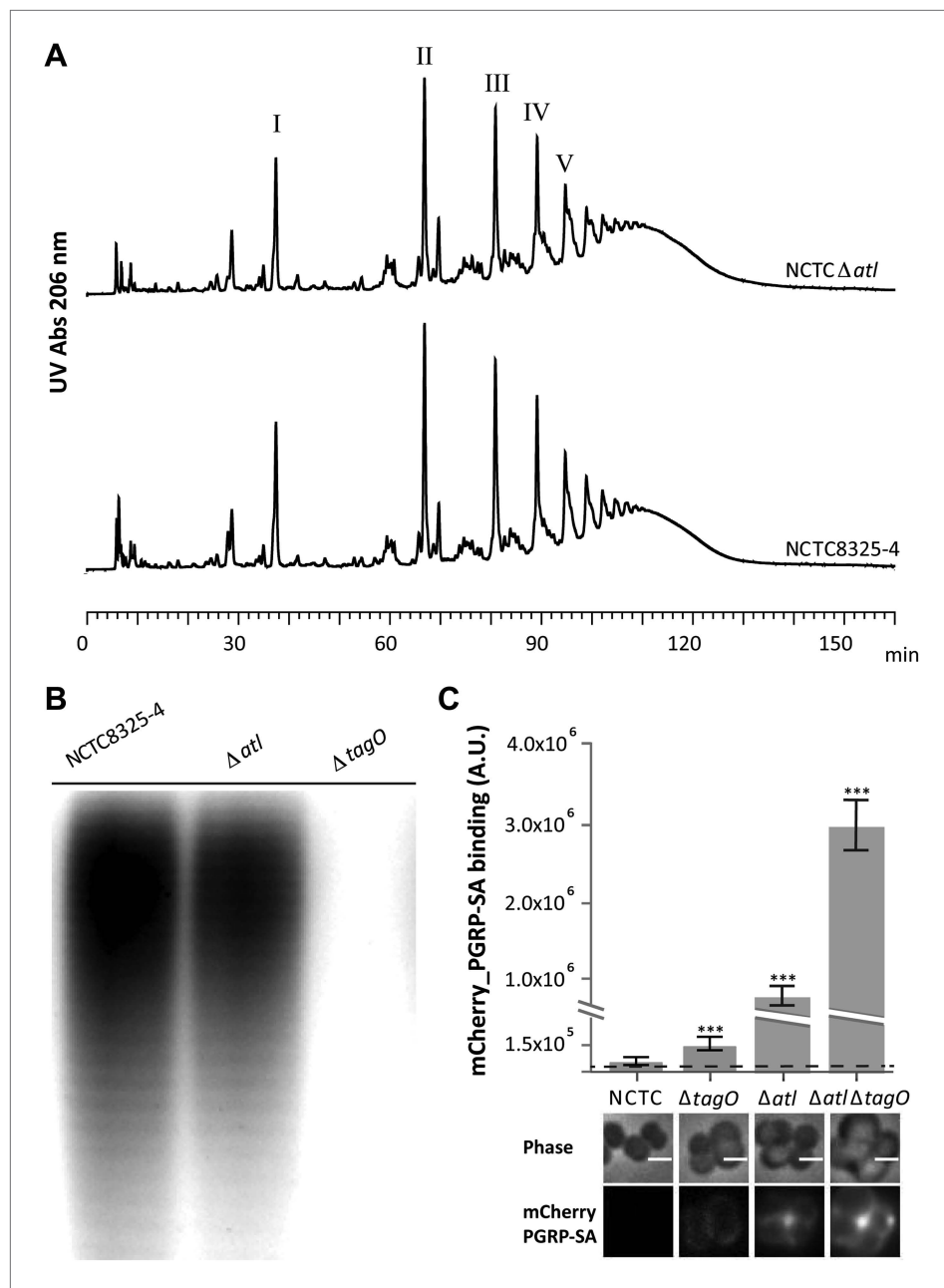
When the *atl* mutants were incubated with mCherry-PGRP-SA, both the mutant having only glucosaminidase activity (AM<sup>H265A</sup> mutant) and the mutant having only amidase activity (GL<sup>E1128A</sup> mutant) were still able to avoid strong PGRP-SA binding, indicating that either amidase or glucosaminidase enzymatic activity was sufficient to impair recognition of *S. aureus* by PGRP-SA (Figure 3C). Only when both activities were absent (AtI<sup>H265A/E1128A</sup> double mutant) was mCherry-PGRP-SA capable of easily recognizing the bacterial cell surface (Figure 3C,D), albeit to lower levels than those observed for the *atl* null mutant. This difference may be due to residual amidase or glucosaminidase activity in the *S. aureus* AtI<sup>H265A/E1128A</sup> double mutant, not detectable in a zymogram.

The proposed role for the amidase and glucosaminidase activities in concealing bacteria was confirmed using purified enzymes. Pre-incubation of *S. aureus atl* null mutant cells with either AM or GL (approximately 0.4 μM) completely abolished mCherry\_PGRP-SA binding to the bacterial surface (Figure 4A). When both enzymes were added simultaneously to the *atl* null mutant cells, lower concentrations of each enzyme (<0.02 μM) were sufficient to conceal bacteria from the host immune receptor (Figure 4B). This is in agreement with the synergy in PGRP-SA binding observed for the *S. aureus* AtI<sup>H265A/E1128A</sup> double mutant (Figure 2C).

We then questioned if the mechanism used by autolysins to conceal PGN at the bacterial surface was dependent on their lytic activity. An alternative hypothesis could be that amidases, or other proteins capable of binding PGN, prevented binding of PGRP-SA by competing for the same PGN substrate, given that the structural fold of PGRPs closely resembles the fold of amidases (Zoll et al., 2010). To distinguish between the two hypotheses, we first incubated *S. aureus atl* null mutant cells with purified AM or with GL, and then washed them thoroughly to ensure complete removal of the proteins (Figure 5). This procedure did not increase recognition by PGRP-SA, showing that the activity of the autolysins, and not their physical presence, was required for protection.

### Trimming of the bacterial cell surface by AtI PGN hydrolytic activities restores the ability of *S. aureus atl* mutant bacteria to kill infected *Drosophila*

The results described above show that amidase or glucosaminidase activities can efficiently protect *S. aureus* cells from direct recognition by the *Drosophila* PGN receptor PGRP-SA. Does this protection confer an advantage to *S. aureus* cells during infection in the *Drosophila* model? Indeed, Tabuchi et al. have previously shown that *S. aureus atl* mutants are impaired in their virulence (Tabuchi et al., 2010). We have confirmed that the *atl* mutant used in this work, when compared to the parental *S. aureus* strain NCTC8325-4, was also severely impaired in its ability to kill wild type *Drosophila*, both the 25174 strain, recently established from wild caught flies (Mackay et al., 2012), as well as the yw strain, which is the parental lineage used to generate the PGRP *semI* mutant (Michel et al., 2001; Figure 6A,B). Furthermore, the *atl* mutant triggered a stronger induction of drosomycin expression (frequently used as a read-out for Toll activity) when normalized for the same number of infecting bacteria (Figure 6C,D).



**Figure 2.** Better recognition of *Staphylococcus aureus* NCTC $\Delta$ atl by PGRP-SA is not mediated by alterations in peptidoglycan muropeptide composition or lack of wall teichoic acids production. **(A)** *Staphylococcus aureus* NCTC $\Delta$ atl mutant has a similar peptidoglycan (PGN) muropeptide composition to the parental strain NCTC8325-4, as seen by HPLC analysis of mutanolysin-digested PGN. Roman numerals I to V indicate muropeptide species from monomers to pentamers, respectively. **(B)** NCTC $\Delta$ atl mutant produces wall teichoic acids (WTAs), as shown by PAGE analysis of surface WTAs from NCTC8325-4, NCTC $\Delta$ atl, and NCTC $\Delta$ tagO (which lacks WTAs). **(C)** Deletion of both the tagO and atl genes had a synergistic effect on PGN exposure to the host receptor PGRP-SA, indicating independent mechanisms of WTA and Atl in PGN concealment. *S. aureus* parental strain NCTC8325-4 and mutant strains NCTC $\Delta$ tagO, NCTC $\Delta$ atl, and NCTC $\Delta$ atl $\Delta$ tagO were incubated with mCherry\_PGRP-SA in 96-well plates. The average amount of mCherry\_PGRP-SA bound to bacteria in each well was quantified using a fluorescent image analyzer (n = 10 wells, for each strain), and is represented as the median with 25% and 75% inter-quartile range. The dashed line represents the median value obtained with control samples (no bacteria added). Statistically significant differences (p<0.001) are indicated by asterisks and were observed between mCherry\_PGRP-SA binding to the parental strain and each mutant as well as between mutants. mCherry\_PGRP-SA binding to the cells was also Figure 2. Continued on next page

Figure 2. Continued

confirmed by fluorescence microscopy (bottom). Gray panels show phase-contrast images of bacterial cells (white scale bar represents 1  $\mu\text{m}$ ) and black panels show mCherry\_PGRP-SA binding.

DOI: [10.7554/eLife.02277.004](https://doi.org/10.7554/eLife.02277.004)

Importantly, our data showed that survival of *Drosophila* infected with an *S. aureus atI* mutant was dependent upon the presence of a functional PGRP-SA (**Figure 6E**). Furthermore, these mutant bacteria were capable of propagating similarly to the parental *S. aureus* strain in flies that lacked a functional PGRP-SA (**Figure 6F**), showing that impaired virulence is not due to a lower proliferation rate of the *atI* mutant.

Two, non-mutually exclusive, hypotheses can explain the decreased virulence of the *atI* mutant. (1) *S. aureus* wild type bacteria produce amidases that cleave the stem peptide moiety of soluble PGN fragments. Given that stem peptides are required for binding of PGRPs to PGN, amidase activity would therefore reduce the inflammatory activity of the soluble PGN. In contrast, the *atI* mutant would release intact mucopeptides, easily detected by PGRP-SA, and therefore would be unable to evade detection by the innate immune system. (2) Amidases produced by *S. aureus* wild type bacteria would shave and remove the most accessible PGN fragments at the surface of bacteria, eliminating the binding sites for PGRPs. As the *atI* mutant does not produce the Atl amidase, it would have extending PGN fragments at its surface, which would be easily detected by PGRP-SA, inducing an immune response.

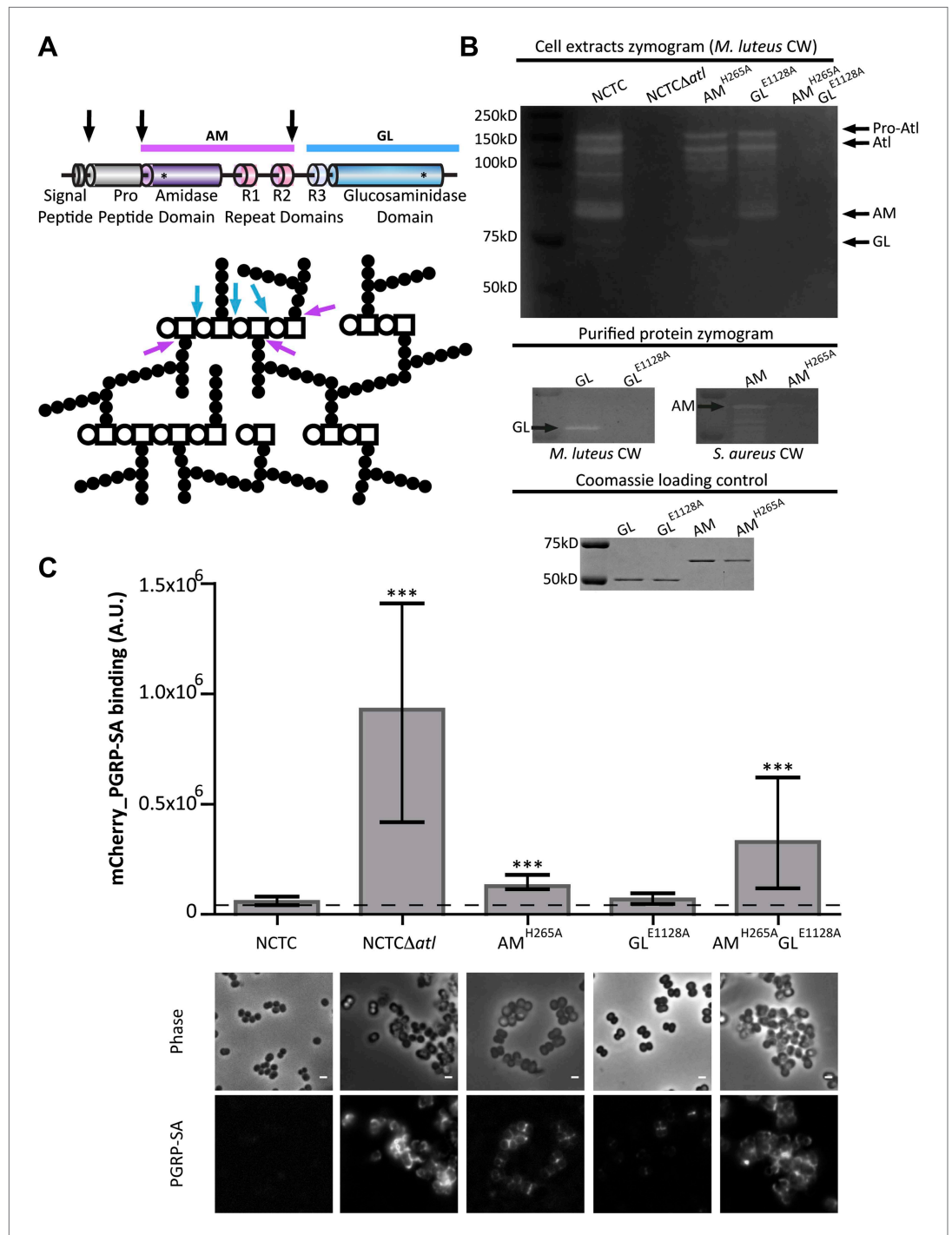
If the first hypothesis is correct, inactivation of the amidase activity, but not of the glucosaminidase (which cleaves the glycans and therefore releases intact, inflammatory PGN fragments), should result in decreased virulence. Alternatively, if the second hypothesis is mainly correct, inactivation of either the amidase or the glucosaminidase activity should result in decreased virulence, as both activities can remove fragments of detectable PGN (containing peptides) from the bacterial surface. We therefore tested the virulence of bacteria with either impaired amidase activity (AM<sup>H265A</sup>) or impaired glucosaminidase activity (GL<sup>E1128A</sup>) and observed that both had a reduced ability to kill flies (**Figure 7A**) in accordance with the second hypothesis. Moreover, injection of *seml* *Drosophila* with *atI* mutant bacteria pre-coated with mCherry\_PGRP-SA resulted in increased fly survival (**Figure 7B**), again favoring a role for PGRP-SA in the recognition of PGN directly at the bacterial surface. Nevertheless, the amount of PGRP-SA present at the surface of the injected bacteria may not have been sufficient to result in full complementation of the ability of *seml* flies to survive infection. This is in accordance with the hypothesis that a continuous and high expression of PGRP-SA during the entire infection process is required to ensure survival of the infected host (*De Gregorio et al., 2001*).

### Amidase and glucosaminidase activities trim the bacterial cell surface of neighboring bacteria and prevent bacterial recognition by *Drosophila* PGN receptor PGRP-SA

Secreted autolysins not only bind to bacterial cell surfaces but they can also be found in the growth medium (*Pasztor et al., 2010*). This raises an interesting hypothesis: can secreted bacterial autolysins protect neighboring bacteria? If this was true, autolysin producers could in theory protect an entire bacterial population from recognition by the host. To test this hypothesis we collected and filtered the supernatant from a culture of *S. aureus* parental strain NCTC8325-4 (Atl producer) and incubated *S. aureus atI* null mutant cells in this medium for 30 min. The *atI*-encoded proteins secreted into the supernatant by the parental strain were capable of modifying the surface of the *atI* null mutant cells, consequently abolishing their recognition by PGRP-SA (**Figure 8A,B**). This was not observed when supernatant from a culture of *S. aureus atI* null mutant was used (**Figure 8A,B**), showing that *atI* products (and not other secreted PGN hydrolases) are responsible for PGN concealment.

Importantly, we observed that *atI* mutants regained the ability to kill flies if pre-treated with a supernatant from a culture of the Atl producer NCTC8325-4 but not if pre-treated with supernatant from a culture of the *atI* mutant (**Figure 8C**).

Moreover, previously bound PGRP-SA could be removed by autolysin activity present in the medium, as seen by time-lapse microscopy of *S. aureus atI* null mutant cells initially covered by bound mCherry\_PGRP-SA and then incubated with supernatant containing amidase and glucosaminidase enzymes (**Figure 9**).



**Figure 3.** Amidase and glucosaminidase activities limit mCherry\_PGRP-SA binding to the bacterial cell surface. **(A)** Representation of the post-translational cleavage (black arrows) of the *atl* encoded protein. The processed amidase (AM, purple arrow) releases peptidoglycan (PGN) stem peptides by cutting the bond between the stem peptides (black circles) and the N-acetylmuramic acid residue (open square). The glucosaminidase (GL, blue arrow) releases muropeptides by cutting the glycosidic linkage between N-acetylmuramic acid (open square) and N-acetylglucosamine (open circle). For simplicity, only some examples of AM and GL cleavage sites are indicated by arrows. **(B)** Zymogram analysis of the activity of autolysins extracted from different *Staphylococcus aureus* *atl* mutant strains expressing inactive amidase (AM<sup>H265A</sup>), inactive glucosaminidase (GL<sup>E1128A</sup>), or both (AM<sup>H265A</sup> GL<sup>E1128A</sup>). Top: Cells were harvested at mid-exponential phase, and protein extracts were prepared and Figure 3. Continued on next page

Figure 3. Continued

run in an SDS-PAGE gel containing *Micrococcus luteus* cell walls. PGN hydrolytic activity is seen as clear bands in the stained gel and showed that *S. aureus* encoding mutant proteins AM or GM were lacking only the expected activity. Middle: A similar analysis was carried out with purified proteins AM, GL, and their inactive forms, AM<sup>H265A</sup> and GL<sup>E1128A</sup>, respectively, showing that mutant proteins were not active. Bottom: SDS-PAGE of the protein samples loaded into the zymograms confirmed that similar amount of proteins were used. (C) *S. aureus* parental and *atl* mutant strains were incubated for mCherry\_PGRP-SA in 96-well plates. mCherry\_PGRP-SA bound to each bacterial strain is represented as the median with 25% and 75% inter-quartile range (n = 50 wells). A significant increase of mCherry\_PGRP-SA binding, relative to the parental strain, was observed with *S. aureus* mutants expressing AM<sup>H265A</sup> and AM<sup>H265A</sup> GL<sup>E1128A</sup> (p < 0.0001), but not the GL<sup>E1128A</sup> mutant. mCherry\_PGRP-SA binding to *S. aureus* parental and *atl* mutant strains was also confirmed by fluorescence microscopy. Gray panels are phase-contrast images of bacterial cells (white scale bar represents 1 μm) and black panels show mCherry\_PGRP-SA binding. DOI: [10.7554/eLife.02277.005](https://doi.org/10.7554/eLife.02277.005)

Together, these data suggest that the autolysins encoded by *atl* can protect not only the producer cells but also a population of invading bacteria from detection by the immune system during infection, enabling it to kill the infected host.

### Role of autolysins in evasion from host PGN receptor is conserved in highly virulent CA-MRSA *S. aureus* and in *Streptococcus pneumoniae*

The *S. aureus* strain used in this work, NCTC8325-4, is susceptible to most antibiotics and has limited interest from a clinical point of view. We therefore tested if the role of *atl*-encoded enzymes in making PGN inaccessible to the host was conserved in other strains, namely in methicillin-resistant *S. aureus* (MRSA) strains. MRSA strains are a leading cause of bacterial infections in hospitals and an important cause of community-acquired (CA) bacterial infections in the United States. MW2 is a particularly virulent MRSA strain that caused the earliest reported cases of CA-MRSA infection in the United States (**Chambers and Deleo, 2009**). Deletion of the *atl* gene in MW2 led to higher binding of mCherry\_PGRP-SA, that is, to improved recognition of the bacterial surface (**Figure 10A**). More importantly, MW2Δ*atl* cells were severely impaired in virulence, as demonstrated by the decreased capacity to kill *Drosophila* (**Figure 10B**).

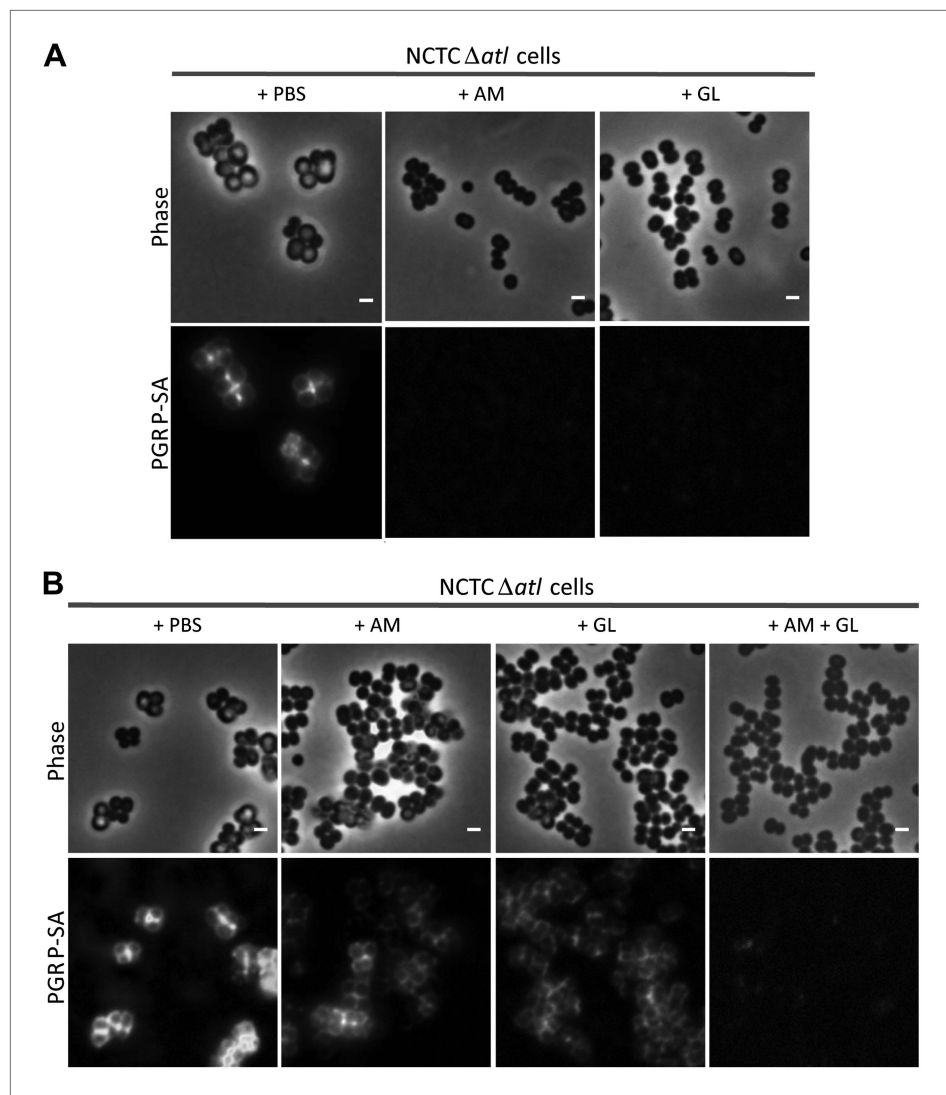
The fact that PGN sensing is an evolutionarily conserved recognition mechanism in innate immunity, suggests that the strategy used by *S. aureus* to conceal PGN from the host could be effective across different animal phyla and even used by other bacteria. We therefore tested if we could observe this phenomenon in another Gram-positive pathogenic bacteria, namely *Streptococcus pneumoniae*, a frequent cause of pneumonia in developed countries and a major cause of infant mortality by septicemia in developing countries (**Kadioglu et al., 2008**). Lack of LytA, the major amidase of *S. pneumoniae*, resulted in bacteria that were better recognized by mCherry\_PGRP-SA, a phenotype that was reversed when LytA was expressed from a plasmid (**Figure 11A**). Interestingly, it is possible that autolysins can participate in inter-species protection, as *S. pneumoniae* LytA, an amidase that releases PGN stem peptides, and *Streptomyces globisporus* mutanolysin, a commercially available muramidase that releases muropeptides, were capable of protecting *S. aureus* *atl* null mutant cells from PGRP-SA recognition (**Figure 11B**).

These results suggest a general role for autolysins, such as amidases, in protecting bacteria from host recognition.

## Discussion

We propose that bacteria have evolved various independent mechanisms to prevent direct recognition by PGN host receptors. We have previously shown that the presence of glycopolymers, such as WTAs, at the bacterial surface contributes to *S. aureus* evasion from the *Drosophila* innate immune system (**Atilano et al., 2011**). We now show that *Atl* also protects bacteria from host recognition but by a different mechanism, given that simultaneous deletion of *tagO* (essential for teichoic acid biosynthesis) and *atl* had a synergistic effect on exposing the surface PGN to host recognition, when compared to individual deletion of each of these genes, as shown in **Figure 2C**. This new role for *Atl* is in accordance with previous reports that have shown in the *Drosophila* infection model that *S. aureus* *atl* mutants are impaired in their virulence (**Tabuchi et al., 2010**).



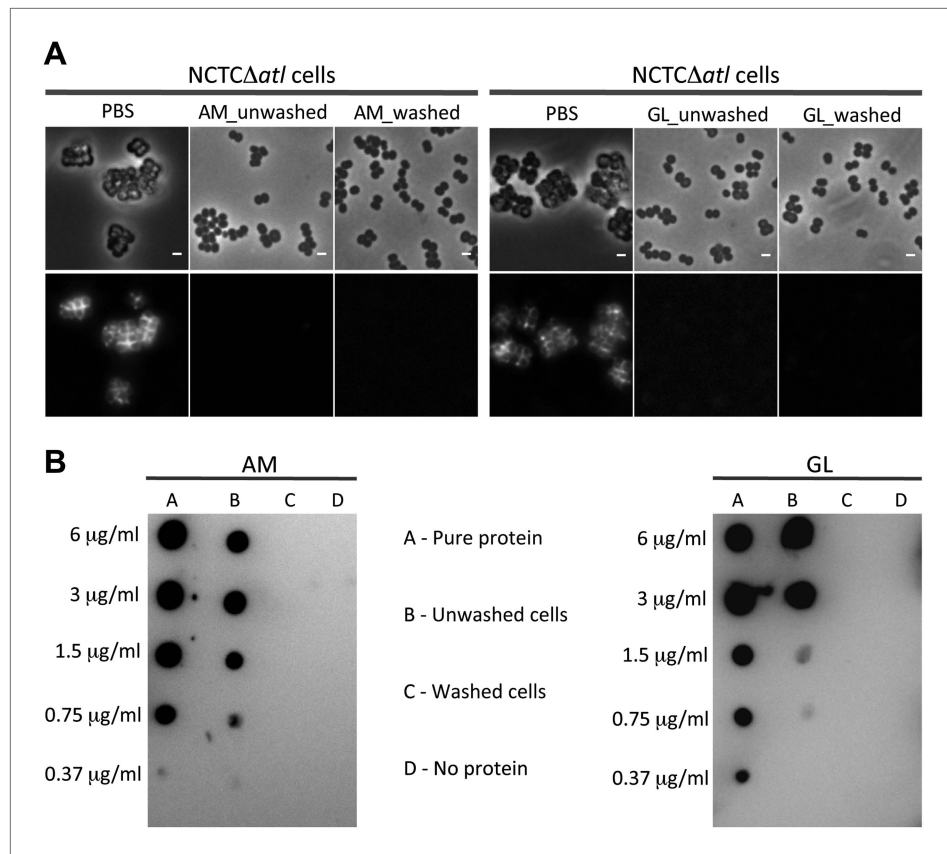


**Figure 4.** Combination of purified staphylococcal AM and GL completely abolishes binding of mCherry\_PGRP-SA to the surface *Staphylococcus aureus atl* null mutant cells. **(A)** mCherry\_PGRP-SA binding to NCTC $\Delta$ atl bacteria pre-incubated with purified AM and GL (0.37  $\mu$ M and 0.44  $\mu$ M, respectively) showed that both enzymes can impair binding of mCherry\_PGRP-SA to the cell surface. PBS was used as negative control. **(B)** The use of lower concentrations of purified AM and GL in combination, to treat NCTC $\Delta$ atl *Staphylococcus aureus* cells (final concentrations of 7.9 nM and 18.7 nM, respectively) was more effective than the single use of AM (final concentration of 7.9 nM) or GL (final concentration of 18.7 nM) in preventing binding of mCherry-PGRP-SA to the surface of NCTC $\Delta$ atl. Gray panels are phase-contrast images of bacterial cells (white scale bar represents 1  $\mu$ m) and black panels show mCherry\_PGRP-SA binding.

DOI: [10.7554/eLife.02277.006](https://doi.org/10.7554/eLife.02277.006)

Bacterial autolysins, or murein hydrolases, are present in most bacteria and have been recognized as important players in bacterial metabolism. Autolysins are required, among other roles, to cleave the pre-existing PGN structure so that new PGN subunits are incorporated during synthesis, to ensure daughter cell separation after complete bacterial division or to prompt antibiotic-induced lysis of bacterial cells (Vollmer *et al.*, 2008; Uehara and Bernhardt, 2011). Autolysins have also been recognized as important virulence factors, as they may act as adhesins (Hell *et al.*, 1998) or be required for biofilm formation (Vollmer *et al.*, 2008; Uehara and Bernhardt, 2011).

The new role for Atl uncovered in this work was surprising, since it has been previously suggested that PGN fragments, released by host enzymes capable of degrading PGN or shed by dividing bacteria during the course of infection, may facilitate host recognition in the context of both NOD receptors and insect



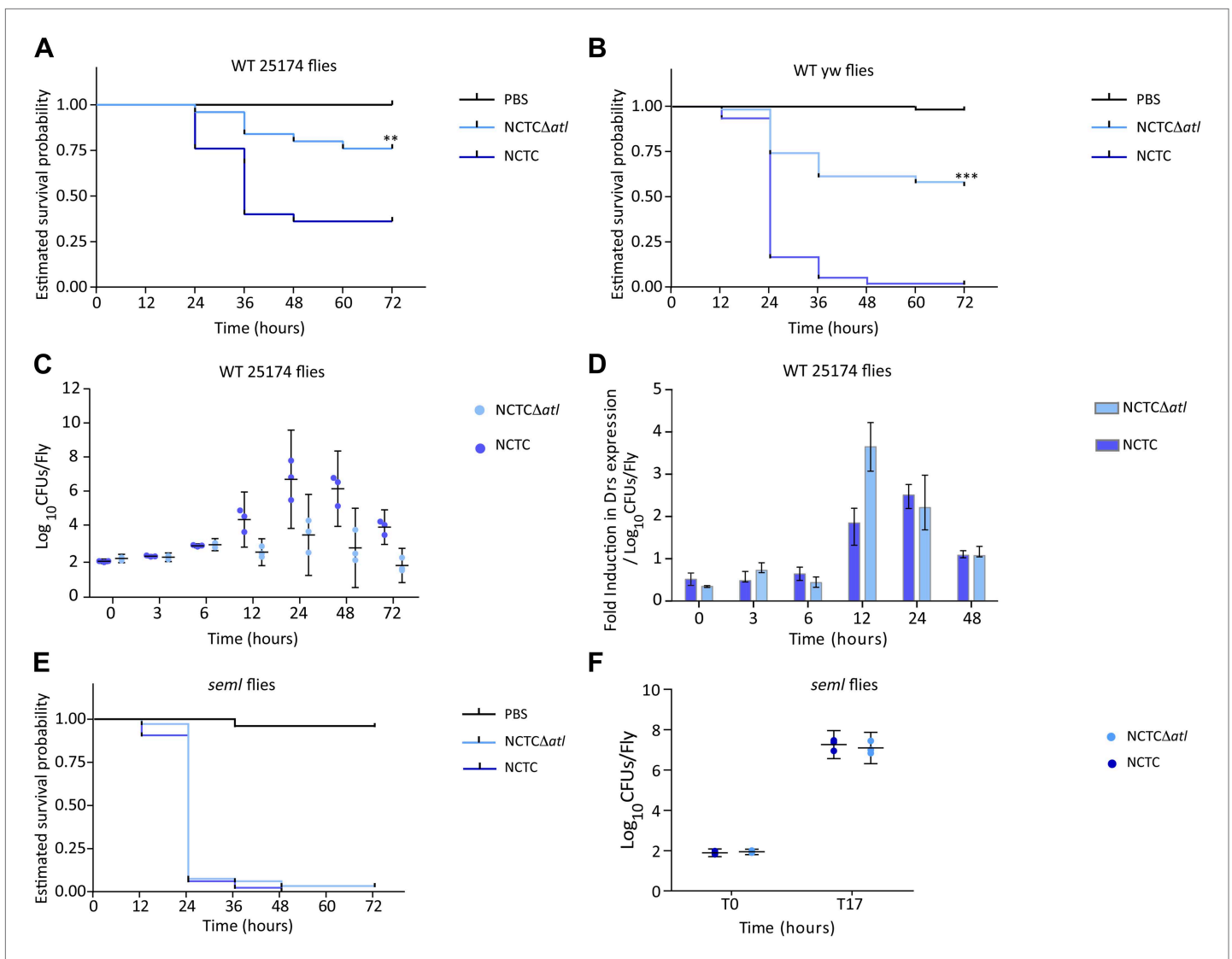
**Figure 5.** Activity, and not the presence of the AtI products, is required to avoid bacterial surface recognition by mCherry\_PGRP-SA. **(A)** NCTC $\Delta$ atl cells were incubated with purified staphylococcal AM, GL, or PBS (negative control) and were either washed to clear these proteins from the cell surface, or unwashed to keep the proteins attached. Bacterial cells were then labeled with mCherry\_PGRP-SA and imaged by fluorescence microscopy. In both cases (washed and unwashed), mCherry\_PGRP-SA was unable to bind *S. aureus* NCTC $\Delta$ atl cells, showing that the physical presence of the enzyme is not required for this effect. Gray panels are phase-contrast images of bacterial cells (white scale bar corresponds to 1  $\mu$ m) and black panels are fluorescence microscopy images showing binding of mCherry\_PGRP-SA to the surface of bacteria. **(B)** To confirm that AM (left) and GL (right) were absent from the washed samples, a dot-blot assay using anti-His antibody, which recognizes the His-tagged AM and GL enzymes, was performed before the addition of mCherry\_PGRP-SA. Washed cells (lanes **C**) showed no presence of protein, whereas in unwashed cells (lanes **B**) the presence of each individual lytic enzyme was detected (detection limit for AM and GL is lower than 0.37  $\mu$ g/ml, as seen in lanes **A**, which corresponds to the pure protein loaded onto the membrane at different concentrations). A sample of cells to which no protein was added was used as a negative control (lanes **D**).

DOI: [10.7554/eLife.02277.007](https://doi.org/10.7554/eLife.02277.007)

PGRPs (Nigro et al., 2008). However, we have now shown that it is precisely this autolysin-mediated ‘trimming’ of PGN (which presumably releases PGN fragments) that renders *S. aureus* inaccessible to the host.

Direct recognition of PGN seems less likely to play a role in mammalian cells, where PGN is recognized by the intracellular pattern-recognition NOD factors, or in the recognition of Gram-negative bacteria, whose PGN is concealed by the outer membrane, by the *Drosophila* innate immune system.

We propose that a major mechanism of Gram-positive bacteria recognition in innate immunity is the direct binding of PGRPs to PGN on whole bacteria, which have dedicated proteins, namely amidases or glucosamidases, to trim exposed fragments of PGN. These fragments may extend beyond the teichoic acids layer and, through their removal, bacteria avoid their own recognition and possibly that of their neighbors, by the host innate immune system. Therefore, targeting bacterial autolysins in order to prevent their activity may constitute a new approach to decrease bacterial virulence and potentiate the effectiveness of the host immune system.



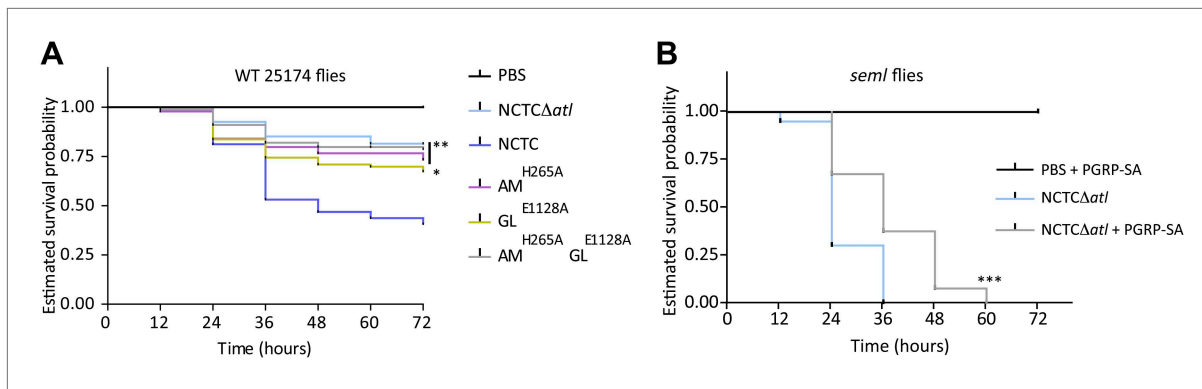
**Figure 6.** PGRP-SA is required to control infection by a *Staphylococcus aureus* mutant lacking the major autolysin Atl. **(A)** Estimated survival curves of wild type (WT) 25174 flies infected with Atl producer NCTC8325-4 and NCTC $\Delta$ atl strains were statistically different ( $p < 0.005$ ) and are indicated by asterisks. Absence of Atl activity in the *S. aureus*  $\Delta$ atl mutant resulted in bacteria that have a decreased ability to kill WT flies. Survival of infected flies ( $n = 75$ ) was monitored at 12 h intervals for 3 days. **(B)** Estimated survival curves of WT yw flies, the parental lineage used to construct the peptidoglycan recognition protein (PGRP) *seml* mutant used in this study, were also produced as described above and gave similar results ( $p < 0.0001$ , indicated by asterisks). **(C)** The number of bacteria harvested from infected flies at different time points after infection, during survival assays, was determined by plating in *S. aureus* growth medium and counting CFUs. **(D)** Drosomycin (Drs) expression was determined by qPCR at different time points after infection and is shown after normalization for the number of infecting bacteria present in flies (panel C). A stronger induction of drosomycin expression was observed in flies injected with NCTC $\Delta$ atl bacteria, 12 h after infection. **(E)** PGRP-SA mutant flies succumbed equally well to infection by NCTC832-4 and NCTC $\Delta$ atl bacteria ( $p > 0.05$ ), showing that in the absence of a functional PGRP-SA, NCTC $\Delta$ atl bacteria can proliferate and kill the infected host. **(F)** Similar numbers of NCTC832-4 and NCTC $\Delta$ atl bacteria were present in PGRP-SA mutant flies 17 h after infection (T17), confirming that the *atl* mutant proliferated as well as the parental bacterial strain in *seml* flies.

DOI: 10.7554/eLife.02277.008

## Materials and methods

### Bacterial strains and growth conditions

All bacterial strains used in this study are listed in **Supplementary file 1**. *Escherichia coli* strains were grown in Luria-Bertani broth (LB; Difco, France) or Luria-Bertani agar (LA; Difco) medium at 37°C with aeration. When needed, the antibiotics ampicillin (Amp; Sigma-Aldrich, Germany) and erythromycin



**Figure 7.** Lack of either *AtI* amidase or glucosaminidase activity, which leads to different types of released peptidoglycan fragments, results in decreased virulence of *Staphylococcus aureus*. **(A)** Estimated survival curves of wild type (WT) 25174 flies infected with *atI* mutant strains impaired in amidase activity (AM<sup>H265A</sup>), glucosaminidase activity (GL<sup>E1128A</sup>), or both (AM<sup>H265A</sup>GL<sup>E1128A</sup>), were statistically different ( $p < 0.05$ ) from survival curves of flies infected with the *AtI* producer NCTC8325-4 strain, but not with the NCTCΔ*atI* strain. Statistically significant differences (\* $p = 0.01$  and \*\* $p < 0.001$ ) are indicated by asterisks and were observed between the estimated survival curve of flies infected with the parental bacteria strain NCTC8325-4 and each survival curve of flies infected with the different *atI* mutant strains. WT 25174 flies infected with the different *atI* mutant strains succumbed in a similar manner ( $p > 0.05$ ). **(B)** Estimated survival curve of PGRP-SA *semI* mutant flies infected with NCTCΔ*atI* bacteria pre-coated with mCherry-PGRP-SA showed that direct binding of the peptidoglycan (PGN) host receptor to the surface resulted in an increase of resistance of *semI* mutant flies to bacterial infection. Statistically significant differences ( $p < 0.0001$ ) are indicated by asterisks and were observed between the two estimated survival curves.

DOI: 10.7554/eLife.02277.009

(Ery; Sigma-Aldrich) were added at a final concentration of 100  $\mu\text{g/ml}$ , and kanamycin (Km; Sigma-Aldrich) was added at a final concentration of 30  $\mu\text{g/ml}$ . *Lactococcus lactis* LL108 strain was grown in M17 broth (Difco), supplemented with sucrose (0.5 M) and glucose (0.5% wt/vol) at 30°C without aeration. Erythromycin was used when required at 100  $\mu\text{g/ml}$ . *S. aureus* strains were grown at 30°C with aeration in tryptic soy broth (TSB; Difco) or on tryptic soy agar (TSA; Difco). Medium was supplemented when required with Ery at 10  $\mu\text{g/ml}$  and/or 5-bromo-4-chloro-3-indolyl  $\beta$ -D-galactopyranoside (X-Gal; Apollo Scientific, UK) at 100  $\mu\text{g/ml}$ . *S. pneumoniae* was grown in C + Y medium at 37°C, without aeration, or on TSA plates supplemented with 5% vol/vol sheep blood (Probiológica, Portugal). Tetracycline (Sigma-Aldrich) and Ery were used, when required, at 1  $\mu\text{g/ml}$  and 0.25  $\mu\text{g/ml}$ , respectively.

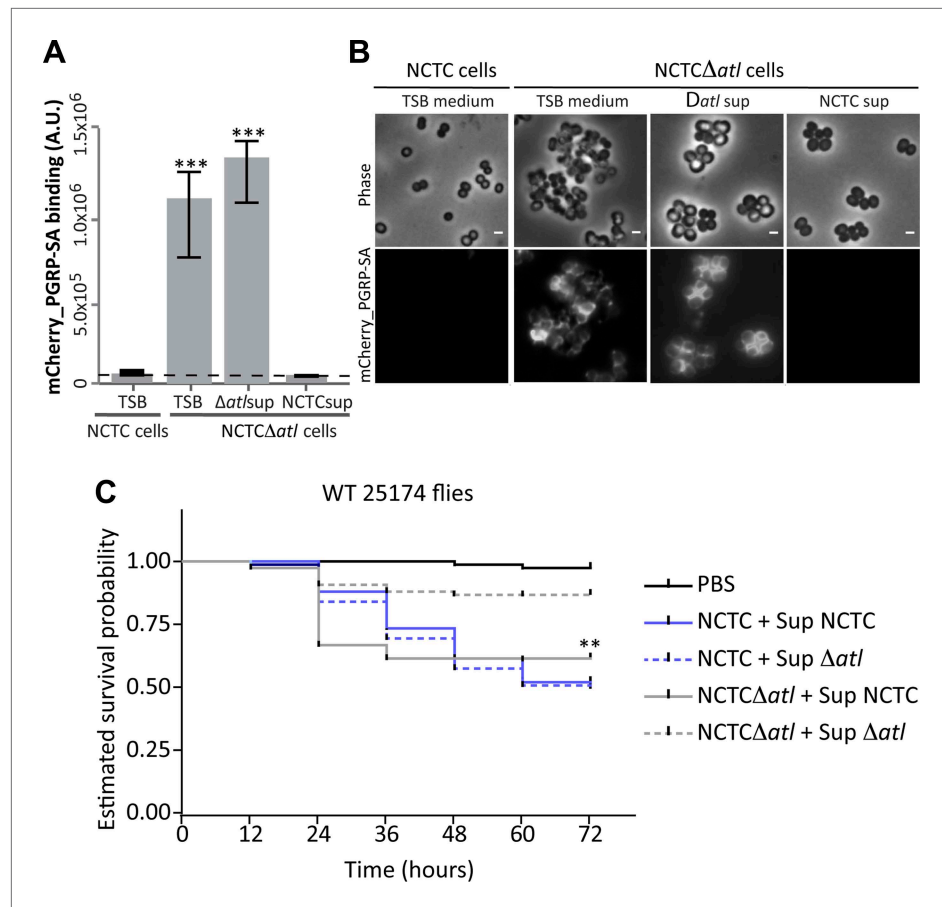
## Fly strains

Isogenic *Drosophila* Bloomington #25174 and #6599 (*yw*) were used as wild type flies. PGRP-SA<sup>*semI*</sup> flies were used as a PGRP-SA mutant background (Michel *et al.*, 2001). Stocks were raised on standard cornmeal-agar medium at 25°C.

## Construction of *S. aureus* and *S. pneumoniae* mutants

All plasmids used in this study are listed in **Supplementary file 1** and the sequences of the primers used are listed in **Supplementary file 2**.

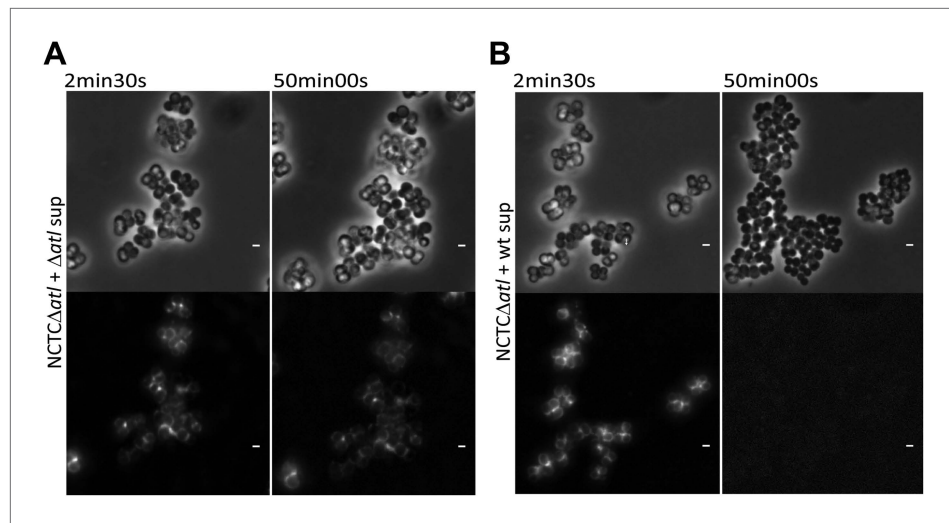
The *S. aureus* *oatA* and *fmtA* null mutants were constructed using the integrative vector pORI280 (Leenhouts *et al.*, 1996). To delete the *oatA* gene from the genome of *S. aureus* NCTC8325-4 we amplified two 1.3 Kb DNA fragments from NCTC8325-4 chromosomal DNA, corresponding to the upstream (primers P1\_*oatA* and P2\_*oatA*) and downstream (primers P3\_*oatA* and P4\_*oatA*) regions of the *oatA* gene. The upstream fragment was digested with *Bam*HI and *Nco*I and cloned into pORI280. The downstream PCR fragment was digested with *Nco*I and *Bgl*II and then cloned into the previous plasmid, which already contained the upstream fragment, producing the plasmid pΔ*oatA*. To delete the *fmtA* gene, we amplified two DNA fragments of approximately 0.9 Kb from *S. aureus* NCTC8325-4 chromosomal DNA, corresponding to the upstream (primers P5\_*fmtA* and P6\_*fmtA*) and downstream (primers P7\_*fmtA* and P8\_*fmtA*) regions of the *fmtA* gene. These fragments were joined by overlap PCR using primers P5\_*fmtA* and P8\_*fmtA*. The resulting PCR product was digested with *Bam*HI and *Bgl*II, and cloned in the pORI280 plasmid, producing the plasmid pΔ*fmtA*. Plasmids pΔ*oatA* and pΔ*fmtA* were sequenced and electroporated into the transformable RN4220 strain at 30°C (using Ery selection) as previously described (Veiga and Pinho, 2009). The plasmids were then transduced to



**Figure 8.** AtI products secreted by *Staphylococcus aureus* cells protect *atI* null mutant cells from PGRP-SA recognition and allow *S. aureus* to establish a successful infection in *Drosophila*. **(A)** NCTCΔ*atI* *Staphylococcus aureus* cells were incubated with TSB medium (control) or with supernatants (sterilized by filtration) from cultures of NCTC8325-4 (NCTCsup, containing *atI* encoded products) or NCTCΔ*atI* (Δ*atI*sup) strains. After washing with PBS, cells were mixed with mCherry\_PGRP-SA in 96-well plates. Binding of the protein to the cells was determined as described in **Figure 1**. mCherry\_PGRP-SA binding to NCTCΔ*atI* cells pre-incubated with supernatant from AtI producer strain NCTC8325-4 was 100-fold lower than to the same cells pre-incubated with supernatant from a culture of NCTCΔ*atI* mutant. The dashed line represents the median value obtained with no bacteria. Statistically significant differences ( $p < 0.001$ ) are indicated by asterisks. **(B)** Similar results were observed by fluorescence microscopy of NCTCΔ*atI* *S. aureus* cells incubated with filtered supernatants from NCTC8325-4 or NCTCΔ*atI* cells (TSB medium was used as negative control) and subsequently labeled with mCherry\_PGRP-SA. Only the supernatant from AtI producer NCTC8325-4 modified the surface of NCTCΔ*atI* cells and limited mCherry\_PGRP-SA binding. The top panels are phase-contrast images of bacterial cells (white scale bar represents 1 μm) and the bottom panels show the mCherry\_PGRP-SA binding to the bacterial surface. **(C)** Estimated survival curves for wild type *Drosophila* infected with *S. aureus* NCTC8325-4 and NCTCΔ*atI* strains that were pre-incubated with bacteria-free supernatant from overnight cultures of each of the *S. aureus* strains. Flies were infected with approximately 100 *S. aureus* CFUs and fly survival was assessed every 12 h over 3 days. As expected, survival curves for flies infected with NCTC8325-4 bacteria pre-incubated with both supernatants were statistically indistinguishable ( $p > 0.05$ ). Treatment of NCTCΔ*atI* cells with both supernatants resulted in distinct survival curves ( $p < 0.001$ , indicated by asterisks), showing that NCTCΔ*atI* cells recover the ability to kill flies if pre-incubated with supernatant from a culture of the AtI producer NCTC8325-4 strain.

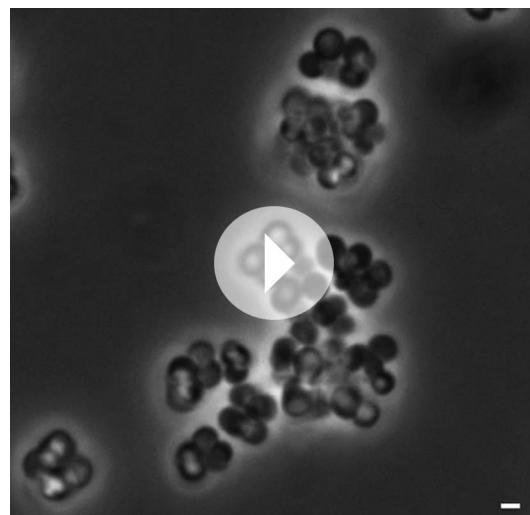
DOI: [10.7554/eLife.02277.010](https://doi.org/10.7554/eLife.02277.010)

NCTC8325-4 using the phage 80α. The resulting strains, carrying the plasmids integrated into the chromosome, were grown in liquid media, without antibiotic and at 37°C, for several generations to allow for loss of the plasmid and, consequently, of the *lacZ* and *erm* genes. Different dilutions of the cultures were plated on TSA plates containing X-Gal (without Ery) and incubated at 37°C overnight. White colonies were isolated and their sensitivity to erythromycin was confirmed. Absence of the *oatA*



**Figure 9.** Time-lapse microscopy showing that *atl* encoded proteins can mediate release of mCherry\_PGRP-SA previously bound to the surface of *atl* null mutant *Staphylococcus aureus* cells. NCTC $\Delta$ *atl* cells, labeled with mCherry-PGRP-SA, were placed on top of a thin layer of agarose containing filter-sterilized supernatant of cultures of NCTC $\Delta$ *atl* mutant (**A**, **Video 1**) or NCTC8325-4 parental strain (**B**, **Video 2**), and observed by fluorescence microscopy in a time-lapse experiment. The supernatant from the *Atl* producer parental strain (**B**), in contrast to the supernatant from the *atl* null mutant (**A**), triggered the release of mCherry-PGRP-SA previously attached to the bacterial cell surface. Gray panels are phase-contrast images of bacterial cells (white scale bar corresponds to 1  $\mu$ m) and black panels are fluorescence microscopy images showing binding of mCherry\_PGRP-SA to the surface of bacteria.

DOI: [10.7554/eLife.02277.011](https://doi.org/10.7554/eLife.02277.011)



**Video 1.**

DOI: [10.7554/eLife.02277.012](https://doi.org/10.7554/eLife.02277.012)

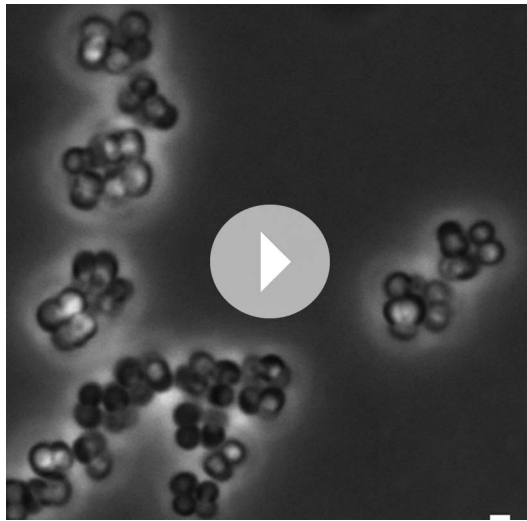
and *fmtA* genes (NCTC $\Delta$ *oatA* and NCTC $\Delta$ *fmtA*) was shown by PCR and confirmed by sequence analysis of the amplified DNA fragment.

All other *S. aureus* null mutants described were constructed using the thermosensitive vector pMAD (Arnaud *et al.*, 2004). In order to generate the *arlR* null mutant, 0.8 Kb PCR fragments of the upstream and downstream regions of the *arlR* gene were amplified from chromosomal DNA of NCTC8325-4, using primer pairs P9\_arlR/P10\_arlR and P11\_arlR/P12\_arlR. The two PCR products were joined in an overlap PCR reaction using the primers P9\_arlR/P12\_arlR. The resulting product was digested with *NcoI* and *BglII* and cloned into pMAD, giving rise to the p $\Delta$ *arlR* plasmid.

To delete the *atl* gene, the p $\Delta$ *atl* plasmid was constructed by amplifying 1 Kb fragments from the downstream and upstream regions of the *atl* gene, using the primer pairs P13\_atl/P14\_atl and P15\_atl/P16\_atl. These two fragments were

joined by overlap PCR using the primers P13\_atl and P16\_atl, and the obtained PCR product was digested with *BglII* and *EcoRI* and cloned into the pMAD vector, giving rise to the p $\Delta$ *atl* plasmid.

To delete the *tarS* gene, we amplified by PCR two DNA fragments of approximately 0.6 Kb, corresponding to the upstream (primers P17\_tarS/P18\_tarS) and downstream (primers P19\_tarS/P20\_tarS) regions of the *tarS* gene. The two fragments were joined by overlap PCR, using primers P17\_tarS and P20\_tarS. The resulting PCR product was digested with *BglII* and *NcoI* and cloned into pMAD vector, producing the plasmid p $\Delta$ *tarS*.



**Video 2.**  
DOI: 10.7554/eLife.02277.013

the *dltA* gene. All gene deletions were confirmed by PCR and the resulting strains were named NCTC $\Delta$ *arlR*, NCTC $\Delta$ *atl*, NCTC $\Delta$ *tarS*, and NCTC $\Delta$ *dltA*.

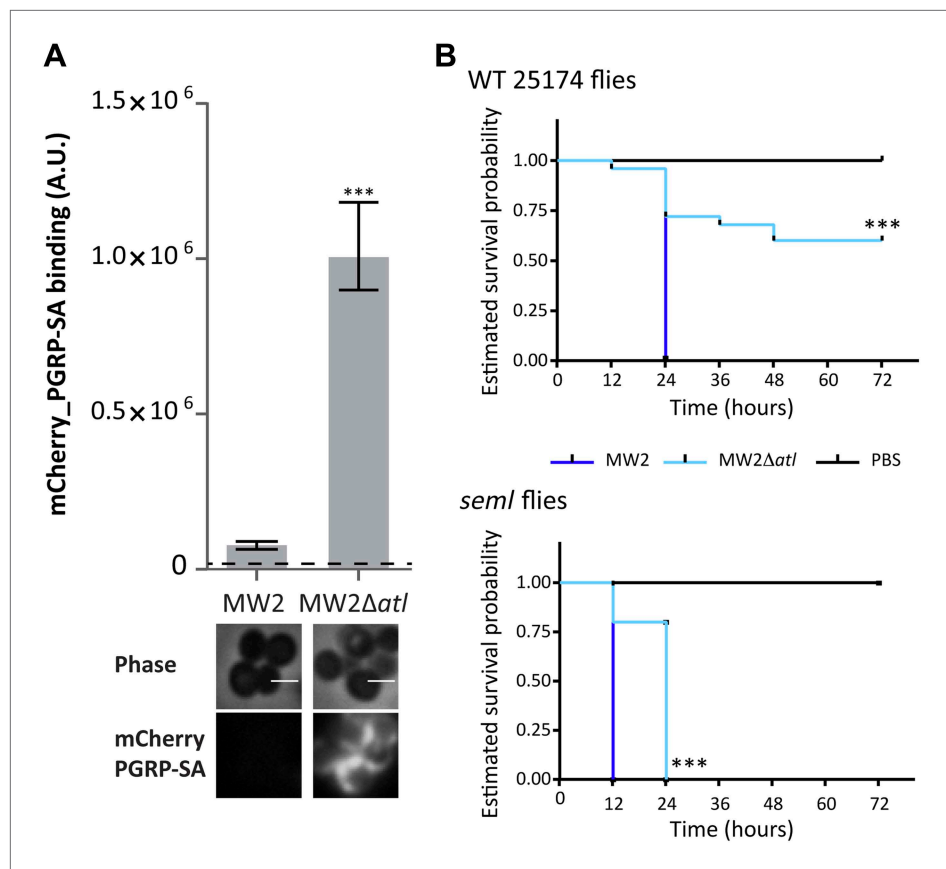
To make a NCTC $\Delta$ *atl* $\Delta$ *tagO* double mutant, the *p* $\Delta$ *tagO* plasmid (Atilano et al., 2010) was transduced into the NCTC $\Delta$ *atl* strain using phage 80 $\alpha$ , at 30°C due to the thermosensitive nature of cells lacking the *tagO* gene. The double mutant was identified among the white colonies sensitive to Ery, by PCR and DNA sequencing, as described above.

The point mutants in the Atl amidase (AM) and Atl glucosaminidase (GL) domains were constructed by site-directed mutagenesis. To inactivate the AM domain, the conserved amino acid H265 was exchanged for an alanine (H265A mutation). To inactivate the GL domain, the amino acid residue E1128 was mutated to an alanine (E1128A mutation). To generate the H265A mutation, a 794 bp region upstream from the codon encoding H265 (primers P29\_AtlAM and P30\_AtlAM) and a 1070 bp region downstream from the codon encoding H265 (primers P31\_AtlAM and P32\_AtlAM) were amplified from NCTC8325-4 genomic DNA by PCR. Joining of the up and downstream regions by overlap PCR (primers P29\_AtlAM and P32\_AtlAM) resulted in the amplification of the DNA fragment encoding the mutated Atl amidase domain, which was cloned into the pMAD vector, using *Bam*HI and *Eco*RI restriction enzymes, to construct plasmid pAM<sup>H265A</sup>. A similar approach was used to generate the Atl point mutation in the Atl glucosaminidase (GL) domain. Briefly, a 659 bp fragment upstream of the codon encoding E1128 (primers P33\_AtlGL and P34\_AtlGL) and a 680 bp fragment downstream of the codon encoding E1128 (primers P35\_AtlGL and P36\_AtlGL) were amplified by PCR. The two fragments were joined by overlap PCR using primers P33\_AtlGL and P36\_AtlGL, digested and cloned into the *Eco*RI/*Bam*HI sites of the pMAD vector, yielding plasmid pGL<sup>E1128A</sup>. After sequencing, plasmids pAM<sup>H265A</sup> and pGL<sup>E1128A</sup> were electroporated into RN4220 and then transduced into NCTC8325-4. Insertion into and excision from the chromosome generated *S. aureus* point mutants in the amidase and glucosaminidase domains. The strains carrying the Atl mutations were verified by sequencing and were named AM<sup>H265A</sup> and GL<sup>E1128A</sup>. A double mutant, named Atl<sup>H265A/E1128A</sup>, mutated in both the amidase and glucosaminidase domains, was constructed by phage transduction of plasmid pGL<sup>E1128A</sup> into the AM<sup>H265A</sup> strain, followed by insertion into and excision from the chromosome, as described above.

The *S. pneumoniae* *lytA* null mutant strain was constructed in the background of R36A strain, using the integrative vector pORI280. To delete the *lytA* gene, we amplified two 1.0 Kb DNA fragments from R36A chromosomal DNA, corresponding to the upstream (primers P41\_LytA and P42\_LytA) and downstream (primers P43\_LytA and P44\_LytA) regions of the *lytA* gene. The two fragments were then joined by overlap PCR using primers P41\_LytA and P44\_LytA. The PCR product was digested with *Bam*HI and *Eco*RI and cloned into plasmid pORI280, producing the plasmid p $\Delta$ *lytA*. This plasmid was propagated in *L. lactis* and purified before being transformed into the unencapsulated *S. pneumoniae* R36A strain. The R36A $\Delta$ *lytA* strain was obtained by insertion and excision of the plasmid into the chromosome, as

To delete the *dltA* gene, two 0.55 Kb DNA fragments were amplified by PCR from the genome of *S. aureus* NCTC8325-4, corresponding to the upstream (primers P25\_*dltA*/P26\_*dltA*) and downstream (primers P27\_*dltA*/P28\_*dltA*) regions of the *dltA* gene. The two fragments were joined by overlap PCR using primers P25\_*dltA* and P28\_*dltA*, and the resulting PCR product was digested with *Bgl*III and *Eco*RI and cloned into the pMAD vector, producing the plasmid p $\Delta$ *dltA*.

The p $\Delta$ *arlR*, p $\Delta$ *atl*, p $\Delta$ *tarS*, and p $\Delta$ *dltA* plasmids were sequenced and electroporated into *S. aureus* RN4220 strain at 30°C (using Ery selection) and then transduced to NCTC8325-4 using phage 80 $\alpha$ . Insertion and excision of the plasmids for deletion of the genes (*arlR*, *atl*, *tarS*, and *dltA*) from the NCTC8325-4 chromosome was completed as previously described (Arnaud et al., 2004), with the exception of the NCTC $\Delta$ *dltA* strain where the last step was performed at 30°C due to the thermosensitive nature of cells lacking



**Figure 10.** Atl encoded proteins are required to conceal CA-MRSA virulent strains from the *Drosophila* immune system. **(A)** *Staphylococcus aureus* CA-MRSA MW2 strain and its *atl* null mutant, MW2Δ*atl*, were incubated with mCherry\_PGRP-SA in 96-well plates. The average amount of mCherry\_PGRP-SA bound to bacteria in each well was quantified using a fluorescent image analyzer ( $n = 10$  wells, for each strain), and is represented as the median with 25% and 75% inter-quartile range. The dashed line represents the median value obtained with control sample (no bacteria added). mCherry\_PGRP-SA binding to MW2 cells was significantly different ( $p < 0.05$ , indicated by asterisks) from the binding to MW2Δ*atl*. mCherry\_PGRP-SA binding to the bacterial cell surface of MW2 and MW2Δ*atl* bacteria was also confirmed by fluorescence microscopy (bottom). Gray panels are phase-contrast images of bacterial cells (white scale bar corresponds to 1  $\mu\text{m}$ ) and black panels show mCherry\_PGRP-SA binding. **(B)** Estimated survival curves for wild type (WT) and PGRP-SA deficient (*semI*) flies infected with *S. aureus* MW2 and MW2Δ*atl*. MW2Δ*atl* is impaired in its ability to kill WT flies, showing that lack of AtI strongly reduces MW2 pathogenicity. PGRP-SA deficient flies are killed in less than 24 h by both *S. aureus* strains, showing that flies control MW2Δ*atl* infection in a PGRP-SA dependent manner. Statistically significant differences ( $p < 0.0001$ ) are indicated by asterisks and were observed between the two estimated survival curves.

DOI: [10.7554/eLife.02277.014](https://doi.org/10.7554/eLife.02277.014)

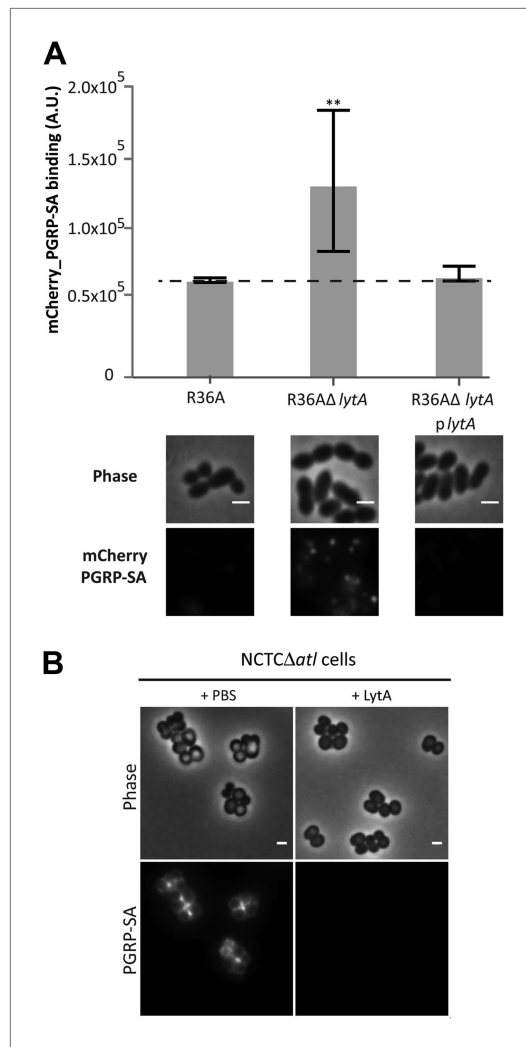
previously described (Leenhouts et al., 1996). For the construction of a plasmid expressing LytA (*plyA*), the *lytA* gene from *S. pneumoniae* R36A genome was amplified with primers P45\_LytA and P46\_LytA, digested with *NheI* and *BglII*, and cloned into plasmid pBCSLF001 (Henriques et al., 2011).

### Construction of recombinant plasmids for AM and GL protein expression

A 3177 bp fragment of the *atl* gene, missing the pro-peptide sequence, was amplified by PCR using genomic DNA of *S. aureus* strain COL with primers Pexp1 and Pexp4, which included *BamHI* and *Sall* restriction sites. The DNA fragment was purified, digested with the respective restriction enzymes, and cloned into pET28a(+) plasmid (Novagen, Merck Millipore, UK) using *E. coli* DH5 $\alpha$ , yielding pET-AMR<sub>1</sub>R<sub>2</sub>R<sub>3</sub>GL.

To construct a plasmid expressing the AM recombinant protein, plasmid pET-AMR<sub>1</sub>R<sub>2</sub>R<sub>3</sub>GL was used as the template for site-directed mutagenesis using primers Pexp\_stop1 and Pexp\_stop2, to change





**Figure 11.** LytA activity can prevent *Streptococcus pneumoniae* and *Staphylococcus aureus* recognition by mCherry\_PGRP-SA. **(A)** *Streptococcus pneumoniae* parental strain R36A, a *lytA* null mutant (R36AΔ*lytA*), and a complemented strain, expressing LytA from a replicative plasmid (R36AΔ*lytA*p*lytA*), were incubated with mCherry\_PGRP-SA in 96-well plates. The average amount of mCherry\_PGRP-SA bound to bacteria in each well was quantified using a fluorescent image analyzer ( $n = 10$  wells, for each strain), and is represented as the median with 25% and 75% inter-quartile range. The dashed line represents the median value obtained with control sample (no bacteria added). mCherry\_PGRP-SA binding to R36AΔ*lytA* was significantly higher ( $p < 0.05$ , indicated by asterisks) than that observed for the parental strain or R36AΔ*lytA*p*lytA* strain, showing that deletion of the *lytA* gene in *S. pneumoniae* increases surface recognition by mCherry\_PGRP-SA. Binding of mCherry\_PGRP-SA to *S. pneumoniae* cells was also imaged using fluorescence microscopy (bottom). Gray panels are phase-contrast images of bacterial cells (white scale bar represents 1  $\mu\text{m}$ ) and black panels show the mCherry\_PGRP-SA binding to Figure 11. Continued on next page

codon 775 from AAA (Lys) to TAA (stop codon) resulting in pET-AMR<sub>1</sub>R<sub>2</sub>.

To construct a plasmid expressing the GL recombinant protein, primers Pexp2 and Pexp4 with *Bam*HI and *Sal*I restriction sites, were used to amplify a 1446 bp sequence encoding for the GL domain of Atl, using COL genomic DNA as the template. The DNA fragment was purified, digested with the respective restriction enzymes, and cloned into pET28a(+) plasmid using *E. coli* DH5 $\alpha$ , yielding pET-R<sub>3</sub>GL.

To construct a plasmid expressing protein AM<sup>H265A</sup>, pET-AMR<sub>1</sub>R<sub>2</sub> was used as the template for site-directed mutagenesis using primers Pexp\_H265A1 and Pexp\_H265A2, to change codon 265 from GTA (His) to GCA (Ala). A plasmid expressing protein GL<sup>E1128A</sup> was constructed similarly, using pET-R<sub>3</sub>GL as the template for directed mutagenesis with primers Pexp\_E1128A1 and Pexp\_E1128A2, changing codon GAA (Glu) to GCA (Ala). The amplified plasmids were digested with *Dpn*I prior to transformation into *E. coli* DH5 $\alpha$ , resulting in pET-AM<sup>H265A</sup> and pET-GL<sup>E1128A</sup>.

The recombinant plasmids (**Supplementary file 1**) were confirmed by restriction analysis and sequencing and used to transform *E. coli* BL21(DE3) strain for protein expression.

## Protein purification

A functional mCherry-tagged derivative of PGRP-SA protein, mCherry-PGRP-SA, was expressed in *E. coli* and purified using a cobalt affinity resin (Clontech) as previously described (Atilano et al., 2011).

The AM and GL proteins were expressed as N-terminal 6 $\times$ His-tag fusion proteins. Expression of the recombinant proteins was performed using an auto-induction based expression method. Cells were grown for 18 h at 37°C with shaking, harvested, and resuspended in 1/10 vol of purification lysis buffer (50 mM NaH<sub>2</sub>PO<sub>4</sub>, 10 mM imidazole, 300 mM NaCl, pH 8.0) containing 10 U/ml of benzonase nuclease (Novagen, Merck Millipore) and Complete-Mini Protease Inhibitor Cocktail (Roche, Switzerland). After cell disruption, the lysates were cleared. The recombinant proteins were soluble and therefore present in the supernatant.

Protein purification was performed using Ni-NTA agarose columns (Qiagen, Germany) under native conditions, according to the manufacturer's instructions. The recombinant proteins were eluted with purification elution buffer (50 mM NaH<sub>2</sub>PO<sub>4</sub>, 250 mM imidazole, 300 mM NaCl, pH 8.0). The expression and purification yields were monitored by SDS-PAGE. The most concentrated elution fractions were dialyzed for 16 h in a 3500 MWCO

Figure 11. Continued

bacteria. (B) *S. aureus* NCTC $\Delta$ atl cells were incubated with purified pneumococcal amidase (LytA) or with the commercially available mutanolysin, a muramidase from *Streptomyces globisporus* capable of degrading peptidoglycan into its mucopeptide components. Bacterial cells were washed to clear these proteins from the cell surface, labeled with mCherry\_PGRP-SA, and imaged by fluorescence microscopy, which showed that both pneumococcal LytA amidase and mutanolysin can prevent detection of NCTC $\Delta$ atl *S. aureus* cells by mCherry\_PGRP-SA.

DOI: [10.7554/eLife.02277.015](https://doi.org/10.7554/eLife.02277.015)

SnakeSkin (Pierce Biotechnology, Rockford, IL) at 4°C, against 100 mM Tris, pH 7.5.

For the purification of *S. pneumoniae* LytA amidase, *E. coli* BL21(DE3) cells were transformed with the plasmid pGL100 (Garcia et al., 1987) and incubated overnight at 37°C, with vigorous shaking, in LB supplemented with 100 µg/ml ampicillin and 2% lactose. Cells were harvested by centrifugation, resuspended in 20 mM sodium phosphate buffer, pH 6.9, and broken by sonication. Clarified lysate was applied to DEAE-cellulose resin and incubated at 4°C for 1 h with stirring. Bound protein was washed five times with 20 mM sodium phosphate buffer containing

1.5 M NaCl, then eluted in the same buffer containing 2% choline. Protein was dialyzed against 20 mM sodium phosphate buffer, pH 6.9 to remove the choline and aliquots were stored at –20°C.

### mCherry\_PGRP-SA binding to bacteria

To quantify mCherry\_PGRP-SA binding to bacterial cells, cultures were grown to mid-exponential phase (OD<sub>600 nm</sub> 0.5), centrifuged, and resuspended in TSB to an OD of 2.5.

Approximately 100 µl of each culture was placed into wells of a 96-well plate and harvested at room temperature (RT) for 5 min at 3600×g. Cells were washed and then resuspended in 100 µl of sterile PBS (pH 6). mCherry\_PGRP-SA was added to each well at a final concentration of 60 µg/ml, followed by incubation for 5 min at RT. Cells were then harvested and washed with PBS. The fluorescent signal of the mCherry\_PGRP-SA was detected using a 532 nm laser in a Fuji FLA-5100 reader (FUJIFILM Life Science) and the fluorescence intensity of each well was determined using ImageJ software (Abramoff et al., 2004).

To image the mCherry\_PGRP-SA binding to bacterial cell surface by fluorescence microscopy, cells were treated as previously described (Atilano et al., 2011), except that mCherry\_PGRP-SA was added to a final concentration of ≈300 µg/ml, in a reaction volume of 200 µl. After labeling, bacterial cells were centrifuged, washed twice with 200 µl of PBS, resuspended in 20 µl of PBS, and observed by fluorescence microscopy.

### Preparation of crude autolytic enzyme extracts and zymographic analysis

Preparation and analysis of crude autolytic enzyme extracts from *Staphylococcus aureus* is described in detail at Bio-protocol (Vaz and Filipe, 2015). Crude autolytic enzyme extracts were prepared from *S. aureus* cultures grown in TSB to OD<sub>600</sub> 0.3 at 30°C. The cells were harvested by centrifugation (7000 rpm, 15 min at 4°C), and the cell pellet was washed in 15 ml of ice-cold 50 mM Tris–HCl (pH 7.5), 150 mM NaCl. Cells were resuspended in SDS 4% (500 ml) and incubated for 30 min at 25°C with stirring. Zymographic analysis of the proteins' peptidoglycan hydrolytic activities was performed as described earlier (Heilmann et al., 1997). Briefly, crude cell lysates or pure proteins isolated as described above were separated by SDS–PAGE on a polyacrylamide gel (10% acrylamide/0.2% bisacrylamide) containing inactivated *Micrococcus luteus* or *S. aureus* cells (recovered at mid-exponential phase, washed with water, and heat inactivated by autoclaving at 121°C for 15 min) as a substrate in the resolving gel. Equal amounts of crude extracts (50 µg) or purified proteins (200 ng), quantified in a Nanodrop ND-1000 spectrophotometer (Thermo Scientific, Wilmington, NC), were loaded in the gel. After electrophoresis, gels were washed in deionized H<sub>2</sub>O for 15 min at RT, and then incubated in renaturation buffer (0.1% Triton X-100, 10 mM CaCl<sub>2</sub>, 10 mM MgCl<sub>2</sub>, 50 mM Tris–HCl, pH 7.5) at 37°C with gentle agitation. The zymogram was stained in methylene blue solution (1% methylene blue in KOH 0.01%) for 3 min and destained in water until bands with peptidoglycan hydrolytic activity were observed as clear zones in the opaque gel.

### WTA analysis

WTAs were extracted by alkaline hydrolysis from overnight cultures, analyzed by native PAGE, and visualized by combined alcian blue/silver staining, as previously described (Atilano et al., 2010).

### Peptidoglycan purification and analysis

Mutanolysin (Sigma)-digested peptidoglycan was prepared from NCTC8325-4 and NCTC $\Delta$ atl *S. aureus* strains as previously described (Filipe et al., 2005). The released mucopeptides were reduced with sodium borohydride and separated by HPLC on a C<sub>18</sub> column (ODS–Hypersyl, 5 µm, 4.6×250 mm;

Thermo Scientific) at a flow rate of 0.5 ml/min for 160 min with a gradient from 5% to 30% (vol/vol) methanol in 100 mM  $\text{NaH}_2\text{PO}_4$ , pH 2.0. The eluted muropeptides were detected by their UV absorption at 206 nm, and their abundance was estimated by calculating the percentage of the integrated area of each peak relative to the total area of the muropeptide peaks, using Shimadzu LC Solution software.

### Effect of secreted AtI products on PGRP-SA binding to the surface of bacterial cells

Cell-free supernatants from the *S. aureus* NCTC $\Delta$ atI mutant and its parental strain NCTC8325-4 were obtained by harvesting overnight cultures at 10,000 $\times$ g for 10 min at 4°C, and filtering the supernatants through a 0.22  $\mu\text{m}$  filter (Merck Millipore). Sterility was confirmed by plating the supernatants on TSA plates at 30°C. To image the effect of the secreted AtI products on the PGRP-SA binding, exponentially growing NCTC $\Delta$ atI and NCTC8325-4 cells (500  $\mu\text{l}$  at OD 0.5) were incubated with the previously isolated cell-free supernatants (500  $\mu\text{l}$ ) for 30 min at 30°C. Cells were then washed twice with cold PBS, incubated with mCherry\_PGRP-SA, and imaged by fluorescence microscopy.

To quantify mCherry\_PGRP-SA binding to the parental and the atI null mutant *S. aureus* cells pre-treated with secreted AtI products, the cultures were grown to mid-exponential phase (OD ~0.5), centrifuged, and resuspended in TSB to an OD of ~2.5. A 100  $\mu\text{l}$  volume of each culture was placed into the wells of a 96-well plate and harvested at RT, 5 min at 3600 $\times$ g. Cells were washed once with 100  $\mu\text{l}$  of PBS and then resuspended in 100  $\mu\text{l}$  of cell-free supernatants (prepared as described above). After 30 min of incubation at 30°C, the cells were washed twice with 100  $\mu\text{l}$  of PBS. Quantification of mCherry\_PGRP-SA binding was done as described above.

### Effect of the activities of AM amidase, GL glucosaminidase, LytA amidase, and mutanolysin muramidase on mCherry\_PGRP-SA binding to the *S. aureus* bacterial surface

AM (15.6 and 390.1 nM), GL (18.7 and 467.4 nM), AM plus GL (15.6 and 18.7 nM, respectively), LytA (3.5 nM), and mutanolysin (108.7 nM) were added to 200  $\mu\text{l}$  of PBS-washed NCTC $\Delta$ atI cells collected during exponential growth (500  $\mu\text{l}$  at OD 0.5). After 30 min incubation at 30°C, cells were washed twice with cold PBS, incubated with mCherry\_PGRP-SA as described before, and imaged by fluorescent microscopy.

### Dot-blot analysis of AM and GL bound to *S. aureus* cells

To determine the relative amount of AM and GL still associated with the bacterial cells following the treatment with these two enzymes, cells were treated with AM and GL as described above and washed three times with PBS (control pellets without the enzymes, without washing, or without cells were used). Samples were serially diluted 1:2 to concentrations ranging from 6  $\mu\text{g}/\text{ml}$  (undiluted) to 0.37  $\mu\text{g}/\text{ml}$  (lowest dilution), and 2  $\mu\text{l}$  were spotted onto a polyvinylidene difluoride (PVDF) membrane (GE Healthcare Life Sciences) and immunostained with specific anti-His mouse antibodies. Washed, unwashed, and control bacterial cells were also labeled with mCherry\_PGRP-SA as described above and observed by fluorescence microscopy.

### Fluorescence microscopy and image acquisition

Bacterial cells samples (2  $\mu\text{l}$ ) incubated with fluorescent tagged mCherry\_PGRP-SA were placed on a thin layer of 1% agarose (Bio-Rad) in PBS. For time-lapse microscopy experiments, 2  $\mu\text{l}$  of NCTC $\Delta$ atI culture, pre-labeled with mCherry-PGRP-SA, were placed on a thin layer of 0.6% agarose containing filtered supernatants of either NCTC8325-4 or NCTC $\Delta$ atI cells. After 2.5 min, phase contrast and fluorescence images were taken every 30 s for 20.5 min and a final image was acquired after 50 min of incubation. Imaging was performed using a Leica DM 6000B microscope equipped with an iXon<sup>EM</sup> + EMCCD camera (Andor Technologies), using Metamorph software (Meta Imaging series 7.5). Images were analyzed using ImageJ software (Abràmoff *et al.*, 2004).

### Fly survival

Overnight cultures of bacteria (10 ml) were washed and resuspended in PBS so that their final OD<sub>600</sub> was 0.350. Healthy looking adult female flies ( $n = 25$ ), 2–4 days old, were injected in the thorax with 32 nl of a bacterial cell suspension (approximately 100 CFUs) or with PBS, using a nanoinjector (Nanoject II; Drummond Scientific, Broomall, PA), and fly survival was determined as previously described (Atilano *et al.*, 2011). In the fly survival assay for the pathogenicity rescue of atI null mutants, 100  $\mu\text{l}$  of each

bacterial cell suspension were incubated with cell-free supernatants of wild type or  $\Delta atI$  mutants (prepared as described above) for 30 min at 30°C. Treated bacterial cells were washed twice, resuspended in an equal volume of PBS and further diluted so that approximately 100 CFUs would be injected per fly. Each experiment was performed in triplicate, on different days. Following injection, flies were kept at 30°C and survival assessed every 12 h over a period of 3 days. Since the trends in survival were the same for each sample of a triplicate (i.e., survival curves were positioned similarly, relative to one another), the three independent biological repeats were combined ( $n = 75$ ) and estimates of survival curves were plotted.

Fly survival was also tested using PGRP-SA pre-coated *S. aureus* cells. For that purpose, overnight NCTC $\Delta atI$  bacterial cells were washed and resuspended in PBS (200  $\mu$ l; OD<sub>600</sub> 0.350) and pre-coated with mCherry\_PGRP-SA at 300  $\mu$ g/ml for 5 min at 4°C. Cells were washed once and resuspended in an equal volume of ice-cold PBS. PBS suspensions with non-coated *atI* cells or containing only mCherry\_PGRP-SA (300  $\mu$ g/ml) were used as experiment controls. Controls and samples were further diluted in PBS (1:250) and used to infect PGRP-SA deficient flies as described above.

The bacterial load per insect during infection was assessed as previously described (Atilano *et al.*, 2011). Six female flies were homogenized in 1000  $\mu$ l TSB with a micropestle device (VWR, Radnor, PA) until pieces of tissue were no longer visible. Homogenate samples (50  $\mu$ l) underwent a 10-fold dilution series from 1 $\times$  to 1/100,000 $\times$  before being spread onto TSB agar plates and onto mannitol salt agar. The number of CFUs was scored after 24 h at 30°C. Triplicate assays were performed.

### Measurements of *Drs* expression levels

Total RNA was extracted from homogenized female flies ( $n = 6$ ) using the Total RNA Purification Plus Kit (Norgen, Canada) according to the manufacturers' instructions. A Maxima First Strand cDNA Synthesis Kit (Thermo Scientific) was used to produce cDNA. The total RNA (500 ng) was mixed with 5 $\times$  reaction mix buffer (4  $\mu$ l), Maxima enzyme mix (2  $\mu$ l), and RNase-free dH<sub>2</sub>O to a final volume of 20  $\mu$ l. cDNA was synthesized in a T100 Thermal Cycler (Bio-Rad) and stored at -20°C. Drosomycin (FlyBase annotation symbol: CG10810) and *tbp* (FlyBase annotation symbol: CG9874) expression levels were measured using primer pairs: *Drs* (+) and *Drs* (-); *Tbp* (+) and *Tbp* (-). The housekeeping gene *tbp* (Matta *et al.*, 2011) was used as a control to normalize the expression of the *Drs* gene. qPCR reactions were performed using the SensiFast SYBR No-ROX Kit (Bioline, UK) as outlined in the manufacturer's instructions, in a Rotor-Gene Q real-time PCR cycler with a 72-well rotor (Qiagen). Negative controls had an equivalent amount of total RNA or no cDNA template. Three biological repeats were performed per time point. Gene expression was calculated on the basis of the comparative threshold cycle ( $C_T$ ) value (Schmittgen and Livak, 2008). Levels of gene expression in all groups were shown as a ratio to the control group value.

### Statistical data analysis

Data for the mCherry\_PGRP-SA binding to bacteria assays ( $n = 10$ –50) was non-normal but with equal variance, and therefore a non-parametric Kruskal–Wallis test followed by Dunn's multiple comparison was applied. Estimated survival curves were constructed from the raw data sets and the log-rank (Mantel–Cox) test used to determine statistical significance between the curves. For clarity, 95% confidence intervals have been omitted from the graphs.

When the bacterial CFU numbers in fly survival assays did not present a normal distribution (Lilliefors test,  $p < 0.05$ ), log<sub>10</sub> transformation was used. Repeated measures two-way ANOVA was used to analyze significant differences over time and between bacterial strains. Bonferroni post-tests were used to locate the time points where mean values were statistically separable between the two bacterial strains.

Analysis for qPCR data showed that the data followed a normal distribution (Lilliefors test,  $p > 0.1$ ) and had equal variance (Levene's test,  $p > 0.1$ ). Thus, mean values were plotted with 95% confidence and repeated measures two-way ANOVA was used to look for significant differences between bacterial wild type strain and *atI* null mutant over time. Bonferroni post-tests were used to locate the time points where mean values were statistically separable between the two bacterial strains.

All data were plotted and analyzed using GraphPad Prism 6 (GraphPad Software).

### Acknowledgements

This study was funded by Fundação para a Ciência e Tecnologia (FCT), Lisbon, Portugal, through research grants PTDC/SAU-IMU/111806/2009 and PTDC/BIA-MIC/111817/2009 (SRF),

PTDC/BIA-BCM/099152/2008 (MGP), PTDC/BIA-MIC/101375/2008 (RGS) and PEst-OE/EQB/LA0004/2011. Wellcome Trust funded grant WT087680 (PL). ERC funded grant ERC-2012-StG-310987 (MGP). MLA, PMP, FV, MJC, PR, and IRG were supported by FCT fellowships SFRH/BD/28440/2006, SFRH/BD/41119/2007, SFRH/BD/78748/2011, SFRH/BPD/77758/2011, SFRH/BPD/23812/2005, and SFRH/BD/70162/2010, respectively.

## Additional information

### Funding

Funder	Grant reference number	Author
Fundação para a Ciência e Tecnologia	PTDC/SAU-IMU/111806/2009	Sérgio Raposo Filipe
Wellcome Trust	WT087680	Petros Ligoxygakis
European Research Council	ERC-2012-StG-310987	Mariana Gomes Pinho
Fundação para a Ciência e Tecnologia	PTDC/BIA-MIC/111817/2009	Sérgio Raposo Filipe
Fundação para a Ciência e Tecnologia	PTDC/BIA-BCM/099152/2008	Mariana Gomes Pinho
Fundação para a Ciência e Tecnologia	PTDC/BIA-MIC/101375/2008	Rita Gonçalves Sobral
Fundação para a Ciência e Tecnologia	PEst-OE/EQB/LA0004/2011	Mariana Gomes Pinho, Sérgio Raposo Filipe
Fundação para a Ciência e Tecnologia	Fellowship SFRH/BD/28440/2006	Magda Luciana Atilano
Fundação para a Ciência e Tecnologia	Fellowship SFRH/BD/41119/2007	Pedro Matos Pereira
Fundação para a Ciência e Tecnologia	Fellowship SFRH/BD/78748/2011	Filipa Vaz
Fundação para a Ciência e Tecnologia	Fellowship SFRH/BD/77758/2011	Maria João Catalão
Fundação para a Ciência e Tecnologia	Fellowship SFRH/BD/23812/2005	Patricia Reed
Fundação para a Ciência e Tecnologia	Fellowship SFRH/BD/70162/2010	Inês Ramos Grilo

The funders had no role in study design, data collection and interpretation, or the decision to submit the work for publication.

### Author contributions

MLA, PMP, Conception and design, Acquisition of data, Analysis and interpretation of data, Drafting or revising the article, Contributed unpublished essential data or reagents; FV, MJC, Acquisition of data, Analysis and interpretation of data, Contributed unpublished essential data or reagents; PR, Drafting or revising the article, Contributed unpublished essential data or reagents; IRG, RGS, Acquisition of data, Contributed unpublished essential data or reagents; PL, Conception and design, Analysis and interpretation of data, Drafting or revising the article; MGP, SRF, Conception and design, Analysis and interpretation of data, Drafting or revising the article, Contributed unpublished essential data or reagents

## Additional files

### Supplementary files

- Supplementary file 1. Strains and plasmids used in this study.  
DOI: [10.7554/eLife.02277.016](https://doi.org/10.7554/eLife.02277.016)
- Supplementary file 2. Primers used in this study.  
DOI: [10.7554/eLife.02277.017](https://doi.org/10.7554/eLife.02277.017)

## References

- Abràmoff MD**, Magalhães PJ, Ram SJ. 2004. Image processing with ImageJ. *Biophotonics International* **11**:36–42.
- Arnaud M**, Chastanet A, Debarbouille M. 2004. New vector for efficient allelic replacement in naturally nontrans-formable, low-GC-content, gram-positive bacteria. *Applied and Environmental Microbiology* **70**:6887–6891. doi: [10.1128/AEM.70.11.6887-6891.2004](https://doi.org/10.1128/AEM.70.11.6887-6891.2004).
- Atilano ML**, Pereira PM, Yates J, Reed P, Veiga H, Pinho MG, Filipe SR. 2010. Teichoic acids are temporal and spatial regulators of peptidoglycan cross-linking in *Staphylococcus aureus*. *Proceedings of the National Academy of Sciences of the United States of America* **107**:18991–18996. doi: [10.1073/pnas.1004304107](https://doi.org/10.1073/pnas.1004304107).
- Atilano ML**, Yates J, Glittenberg M, Filipe SR, Ligoxygakis P. 2011. Wall teichoic acids of *Staphylococcus aureus* limit recognition by the *Drosophila* peptidoglycan recognition protein-SA to promote pathogenicity. *PLOS Pathogens* **7**:e1002421.
- Bera A**, Herbert S, Jakob A, Vollmer W, Gotz F. 2005. Why are pathogenic staphylococci so lysozyme resistant? The peptidoglycan O-acetyltransferase OatA is the major determinant for lysozyme resistance of *Staphylococcus aureus*. *Molecular Microbiology* **55**:778–787. doi: [10.1111/j.1365-2958.2004.04446.x](https://doi.org/10.1111/j.1365-2958.2004.04446.x).
- Bose JL**, Lehman MK, Fey PD, Bayles KW. 2012. Contribution of the *Staphylococcus aureus* Atl AM and GL murein hydrolase activities in cell division, autolysis, and biofilm formation. *PLOS ONE* **7**:e42244. doi: [10.1371/journal.pone.0042244](https://doi.org/10.1371/journal.pone.0042244).
- Chambers HF**, Deleo FR. 2009. Waves of resistance: *Staphylococcus aureus* in the antibiotic era. *Nature Reviews Microbiology* **7**:629–641. doi: [10.1038/nrmicro2200](https://doi.org/10.1038/nrmicro2200).
- Chaput C**, Boneca IG. 2007. Peptidoglycan detection by mammals and flies. *Microbes and Infection* **9**:637–647. doi: [10.1016/j.micinf.2007.01.022](https://doi.org/10.1016/j.micinf.2007.01.022).
- De Gregorio E**, Spellman PT, Rubin GM, Lemaitre B. 2001. Genome-wide analysis of the *Drosophila* immune response by using oligonucleotide microarrays. *Proceedings of the National Academy of Sciences of the United States of America* **98**:12590–12595. doi: [10.1073/pnas.221458698](https://doi.org/10.1073/pnas.221458698).
- Dziarski R**, Gupta D. 2006. Mammalian PGRPs: novel antibacterial proteins. *Cell Microbiology* **8**:1059–1069. doi: [10.1111/j.1462-5822.2006.00726.x](https://doi.org/10.1111/j.1462-5822.2006.00726.x).
- Filipe SR**, Tomasz A, Ligoxygakis P. 2005. Requirements of peptidoglycan structure that allow detection by the *Drosophila* Toll pathway. *EMBO Reports* **6**:327–333. doi: [10.1038/sj.embor.7400371](https://doi.org/10.1038/sj.embor.7400371).
- Garcia JL**, Garcia E, Lopez R. 1987. Overproduction and rapid purification of the amidase of *Streptococcus pneumoniae*. *Archives of Microbiology* **149**:52–56. doi: [10.1007/BF00423136](https://doi.org/10.1007/BF00423136).
- Heilmann C**, Hussain M, Peters G, Gotz F. 1997. Evidence for autolysin-mediated primary attachment of *Staphylococcus epidermidis* to a polystyrene surface. *Molecular Microbiology* **24**:1013–1024. doi: [10.1046/j.1365-2958.1997.4101774.x](https://doi.org/10.1046/j.1365-2958.1997.4101774.x).
- Hell W**, Meyer HG, Gatermann SG. 1998. Cloning of aas, a gene encoding a *Staphylococcus saprophyticus* surface protein with adhesive and autolytic properties. *Molecular Microbiology* **29**:871–881. doi: [10.1046/j.1365-2958.1998.00983.x](https://doi.org/10.1046/j.1365-2958.1998.00983.x).
- Henriques MX**, Rodrigues T, Carido M, Ferreira L, Filipe SR. 2011. Synthesis of capsular polysaccharide at the division septum of *Streptococcus pneumoniae* is dependent on a bacterial tyrosine kinase. *Molecular Microbiology* **82**:515–534. doi: [10.1111/j.1365-2958.2011.07828.x](https://doi.org/10.1111/j.1365-2958.2011.07828.x).
- Kadioglu A**, Weiser JN, Paton JC, Andrew PW. 2008. The role of *Streptococcus pneumoniae* virulence factors in host respiratory colonization and disease. *Nature Reviews Microbiology* **6**:288–301. doi: [10.1038/nrmicro1871](https://doi.org/10.1038/nrmicro1871).
- Kang D**, Liu G, Lundstrom A, Gelius E, Steiner H. 1998. A peptidoglycan recognition protein in innate immunity conserved from insects to humans. *Proceedings of the National Academy of Sciences of the United States of America* **95**:10078–10082. doi: [10.1073/pnas.95.17.10078](https://doi.org/10.1073/pnas.95.17.10078).
- Kashyap DR**, Wang M, Liu LH, Boons GJ, Gupta D, Dziarski R. 2011. Peptidoglycan recognition proteins kill bacteria by activating protein-sensing two-component systems. *Natural Medicines* **17**:676–683. doi: [10.1038/nm.2357](https://doi.org/10.1038/nm.2357).
- Leenhouts K**, Buist G, Bolhuis A, Ten Berge A, Kiel J, Mierau I, Dabrowska M, Venema G, Kok J. 1996. A general system for generating unlabelled gene replacements in bacterial chromosomes. *Molecular and General Genetics* **253**:217–224. doi: [10.1007/s004380050315](https://doi.org/10.1007/s004380050315).
- Lemaitre B**, Hoffmann J. 2007. The host defense of *Drosophila melanogaster*. *Annual Review of Immunology* **25**:697–743. doi: [10.1146/annurev.immunol.25.022106.141615](https://doi.org/10.1146/annurev.immunol.25.022106.141615).
- Leulier F**, Parquet C, Pili-Floury S, Ryu J, Caroff M, Lee W, Mengin-Lecreux D, Lemaitre B. 2003. The *Drosophila* immune system detects bacteria through specific peptidoglycan recognition. *Nature Immunology* **4**:478–484. doi: [10.1038/ni922](https://doi.org/10.1038/ni922).
- Mackay TF**, Richards S, Stone EA, Barbadilla A, Ayroles JF, Zhu D, Casillas S, Han Y, Magwire MM, Cridland JM, Richardson MF, Anholt RR, Barrón M, Bess C, Blankenburg KP, Carbone MA, Castellano D, Chaboub L, Duncan L, Harris Z, Javaid M, Jayaseelan JC, Jhangiani SN, Jordan KW, Lara F, Lawrence F, Lee SL, Librado P, Linheiro RS, Lyman RF, Mackey AJ, Munidasa M, Muzny DM, Nazareth L, Newsham I, Perales L, Pu LL, Qu C, Ràmia M, Reid JG, Rollmann SM, Rozas J, Saada N, Turlapati L, Worley KC, Wu YQ, Yamamoto A, Zhu Y, Bergman CM, Thornton KR, Mittelman D, Gibbs RA. 2012. The *Drosophila melanogaster* genetic reference panel. *Nature* **482**:173–178. doi: [10.1038/nature10811](https://doi.org/10.1038/nature10811).
- Matta BP**, Bitner-Mathe BC, Alves-Ferreira M. 2011. Getting real with real-time qPCR: a case study of reference gene selection for morphological variation in *Drosophila melanogaster* wings. *Development Genes and Evolution* **221**:49–57. doi: [10.1007/s00427-011-0356-6](https://doi.org/10.1007/s00427-011-0356-6).
- Michel T**, Reichhart JM, Hoffmann JA, Royet J. 2001. *Drosophila* Toll is activated by Gram-positive bacteria through a circulating peptidoglycan recognition protein. *Nature* **414**:756–759. doi: [10.1038/414756a](https://doi.org/10.1038/414756a).

- Nigro G**, Fazio LL, Martino MC, Rossi G, Tattoli I, Liparoti V, De Castro C, Molinaro A, Philpott DJ, Bernardini ML. 2008. Muramylpeptide shedding modulates cell sensing of *Shigella flexneri*. *Cell Microbiology* **10**:682–695. doi: [10.1111/j.1462-5822.2007.01075.x](https://doi.org/10.1111/j.1462-5822.2007.01075.x).
- Pasztor L**, Ziebandt AK, Nega M, Schlag M, Haase S, Franz-Wachtel M, Madlung J, Nordheim A, Heinrichs DE, Gotz F. 2010. Staphylococcal major autolysin (Atl) is involved in excretion of cytoplasmic proteins. *The Journal of Biological Chemistry* **285**:36794–36803. doi: [10.1074/jbc.M110.167312](https://doi.org/10.1074/jbc.M110.167312).
- Schmittgen TD**, Livak KJ. 2008. Analyzing real-time PCR data by the comparative C(T) method. *Nature Protocols* **3**:1101–1108. doi: [10.1038/nprot.2008.73](https://doi.org/10.1038/nprot.2008.73).
- Tabuchi Y**, Shiratsuchi A, Kurokawa K, Gong JH, Sekimizu K, Lee BL, Nakanishi Y. 2010. Inhibitory role for D-alanylation of wall teichoic acid in activation of insect Toll pathway by peptidoglycan of *Staphylococcus aureus*. *Journal of Immunology* **185**:2424–2431. doi: [10.4049/jimmunol.1000625](https://doi.org/10.4049/jimmunol.1000625).
- Uehara T**, Bernhardt TG. 2011. More than just lysins: peptidoglycan hydrolases tailor the cell wall. *Current Opinion in Microbiology* **14**:698–703. doi: [10.1016/j.mib.2011.10.003](https://doi.org/10.1016/j.mib.2011.10.003).
- Vaz F**, Filipe SR. (2015). Preparation and analysis of crude autolytic enzyme extracts from *Staphylococcus aureus*. *Bio-protocol* **5**:e1687. doi: [10.21769/BioProtoc.1687](https://doi.org/10.21769/BioProtoc.1687).
- Veiga H**, Pinho MG. 2009. Inactivation of the *SauI* type I restriction-modification system is not sufficient to generate *Staphylococcus aureus* strains capable of efficiently accepting foreign DNA. *Applied Environmental Microbiology* **75**:3034–3038. doi: [10.1128/AEM.01862-08](https://doi.org/10.1128/AEM.01862-08).
- Vollmer W**, Joris B, Charlier P, Foster S. 2008. Bacterial peptidoglycan (murein) hydrolases. *FEMS Microbiology Reviews* **32**:259–286. doi: [10.1111/j.1574-6976.2007.00099.x](https://doi.org/10.1111/j.1574-6976.2007.00099.x).
- Willmann R**, Lajunen HM, Erbs G, Newman MA, Kolb D, Tsuda K, Katagiri F, Fliegmann J, Bono JJ, Cullimore JV, Jehle AK, Gotz F, Kulik A, Molinaro A, Lipka V, Gust AA, Nurnberger T. 2011. Arabidopsis lysin-motif proteins LYM1 LYM3 CERK1 mediate bacterial peptidoglycan sensing and immunity to bacterial infection. *Proceedings of the National Academy of Sciences of the United States of America* **108**:19824–19829. doi: [10.1073/pnas.1112862108](https://doi.org/10.1073/pnas.1112862108).
- Zoll S**, Patzold B, Schlag M, Gotz F, Kalbacher H, Stehle T. 2010. Structural basis of cell wall cleavage by a staphylococcal autolysin. *PLOS Pathogens* **6**:e1000807. doi: [10.1371/journal.ppat.1000807](https://doi.org/10.1371/journal.ppat.1000807).