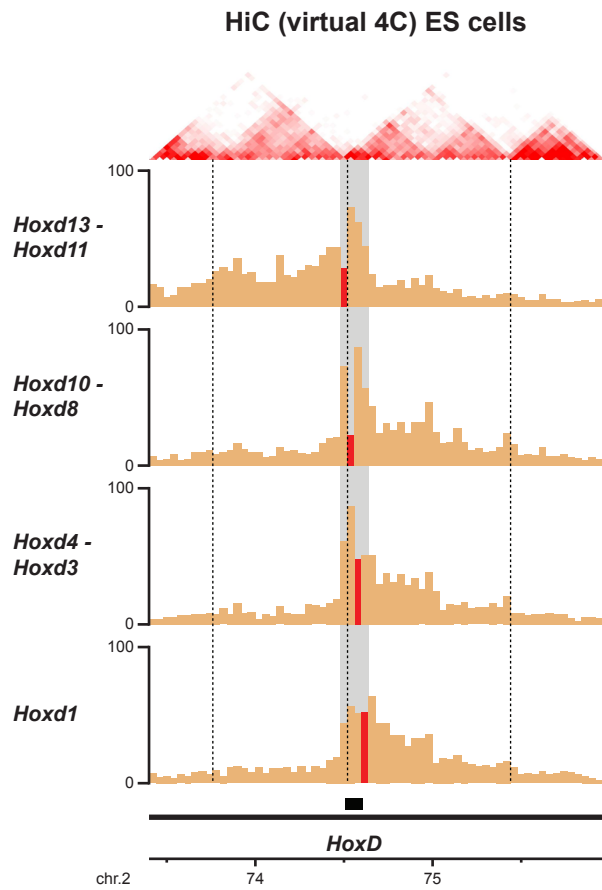
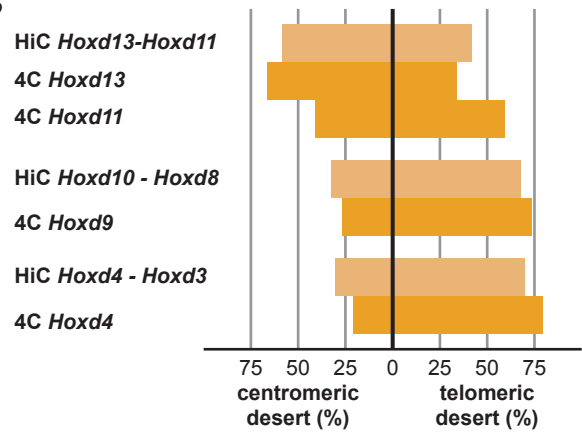


A**B****C**

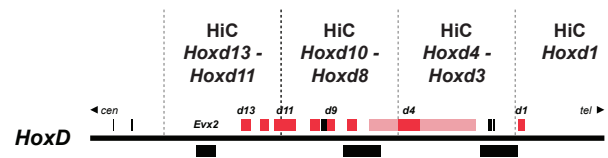
TADs in ES cells (mm9, from Dixon *et al.*, 2012)

-2	chr2	73'400'000	73'760'000
-1	chr2	73'760'000	74'520'000
+1	chr2	74'520'000	75'440'000
+2	chr2	75'440'000	75'960'000

D

Position of HiC bins (viewpoints in virtual 4C, mm9)

- TSS-based
- 40 kb resolution

**E**