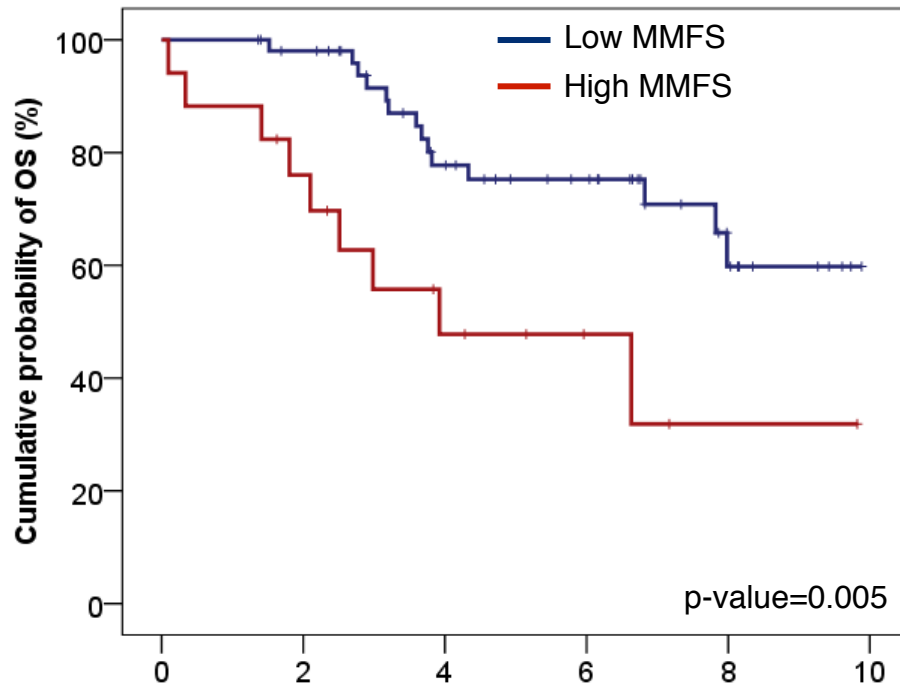


A

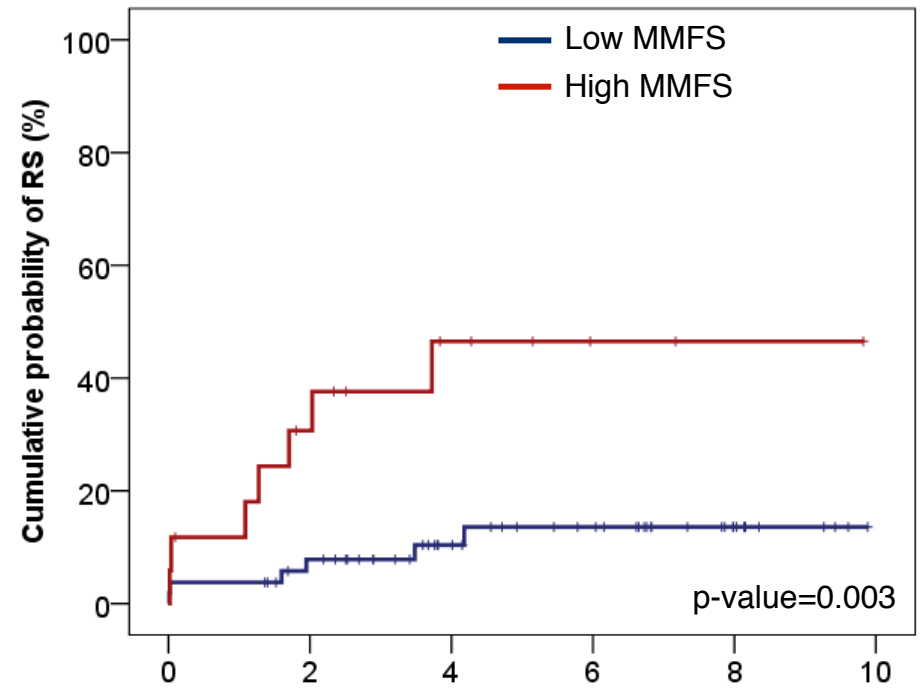


At risk

53	49	33	25	10	0
17	12	6	3	1	0

	N	Events	5-year OS	95% CI
Low MMFS	53	14	75.3%	62.6-88.0
High MMFS	17	9	47.8%	22.2-73.4

B



At risk

53	45	30	22	9	0
17	10	5	2	1	0

	N	Events	5-year RS	95% CI
Low MMFS	53	6	13.6%	3.3-23.9
High MMFS	17	7	46.5%	20.5-72.5