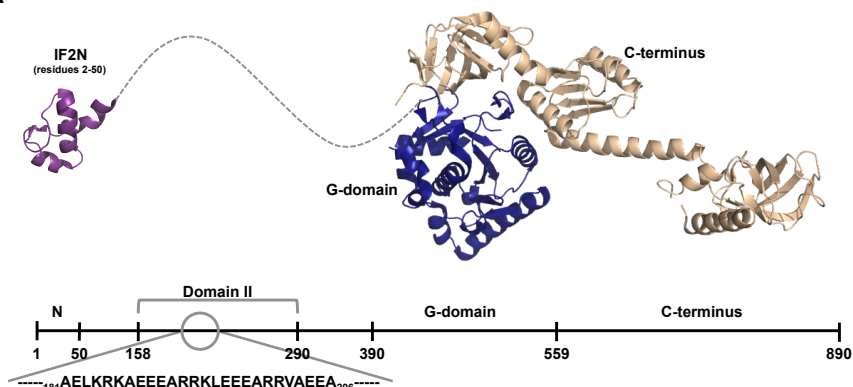
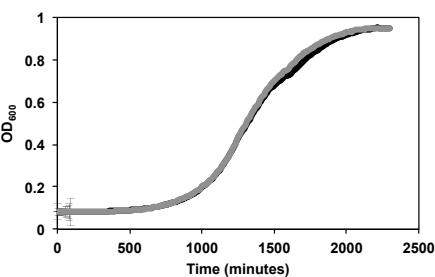


Figure 5 – figure supplement 1

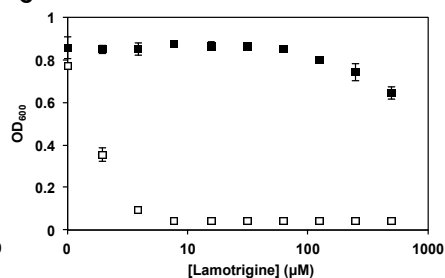
A



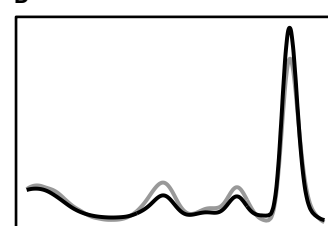
B



C



D



E

Enterococcus faecalis/1-798 -----
Escherichia coli BW25113/1-890 AELKRKAEEEEARRKLEEEARRVAEEA
Citrobacter rodentium/1-894 AELKRKAEEEEARRKLEEEARRVAEEA
Salmonella enterica/1-892 AELKRKAEEEEARRKLEEEARRVAEEA
Enterobacter cancerogenus/1-895 AELKRKAEEEEARRKLEEEARRVAEEA
Pseudomonas aeruginosa/1-840 -----AEPVAKPAAVEERKK--EEP
Acinetobacter baumannii/1-904 AQLKATEEAVRRKAAEEAQQTLEQM

F

