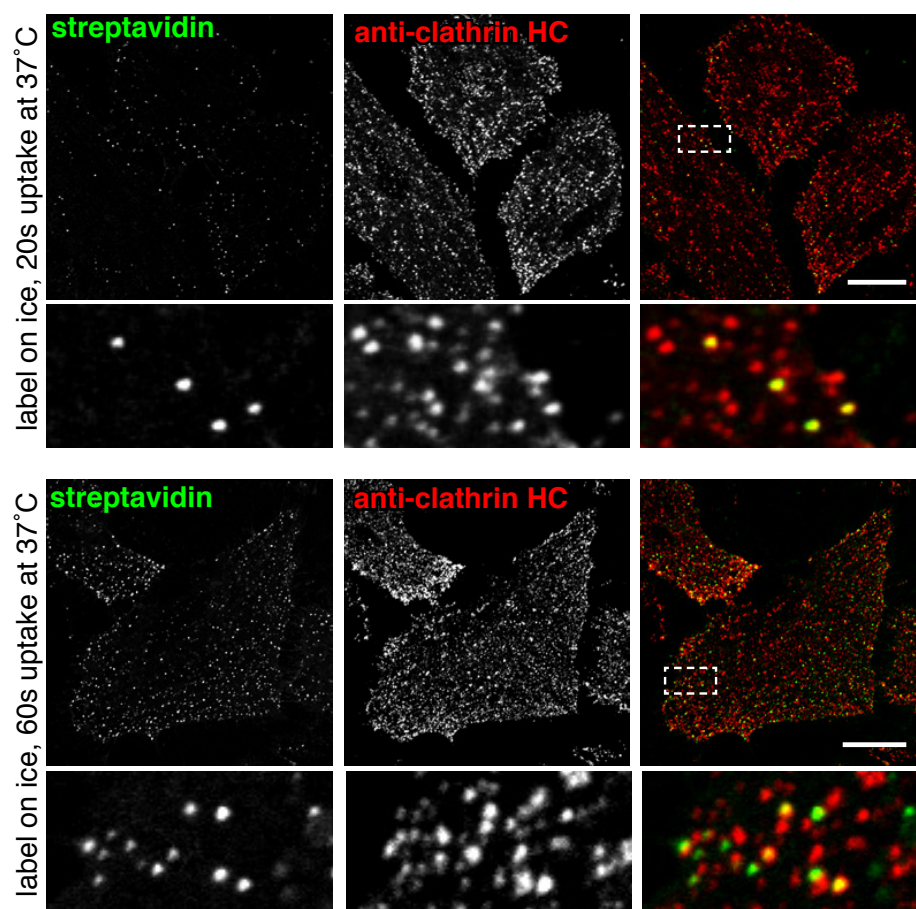


Figure 2-figure supplement 5



**Figure 2-figure supplement 5. Co-localisation between internalised sulfo-NHS-SS-biotin and clathrin after 20s and 60s of internalisation at 37°C.** HeLa cells labeled at 4°C with sulfo-NHS-SS-biotin, were moved to 37°C for the indicated time-points. Surface biotin was removed by MESNA treatment, the cells were fixed and permeabilised, and then stained with streptavidin-488, and antibodies against clathrin heavy chain by indirect immunofluorescence. Box indicates zoomed region, bars are 20µm. 20s image also shown in Figure 2.