

Figure 2-figure supplement 6

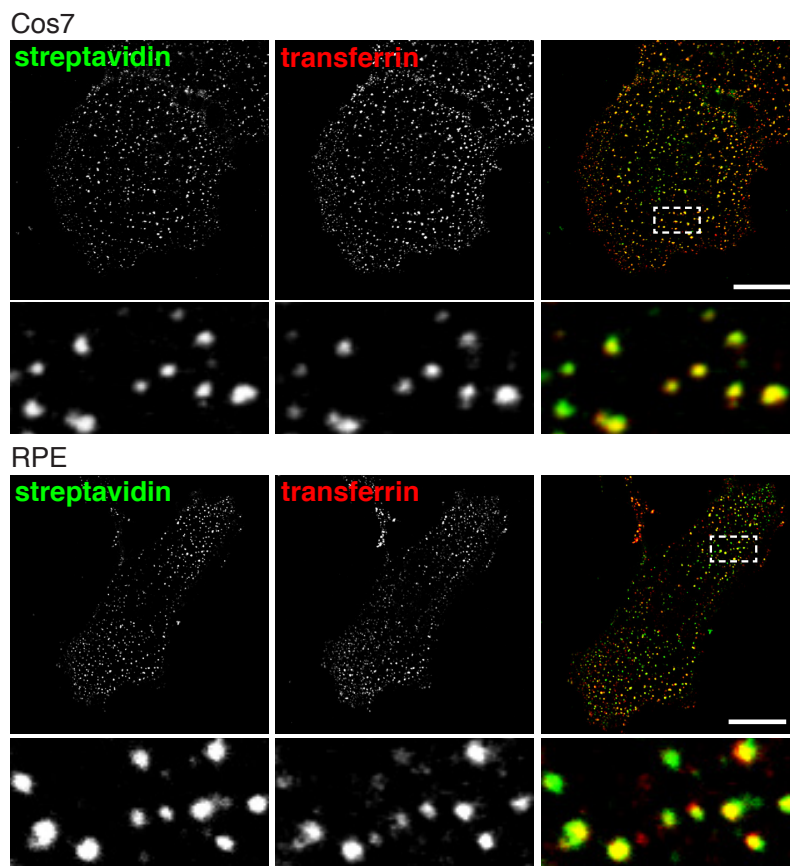


Figure 2-figure supplement 6. Total endocytosed protein and transferrin co-localise after 90s uptake in Cos7 and RPE cells. Confocal images of co-internalisation of total membrane protein, labeled at 4°C with sulfo-NHS-SS-biotin, and transferrin-546. Internalisation was for 90s at 37°C. Biotin was detected with streptavidin-488. Note that labelling with biotin and transferrin at 4°C was carried out consecutively, so transferrin was not biotinylated. Zoomed in area of the lower panel is indicated with a box. Bar is 20µm.