

Figure 4-figure supplement 1

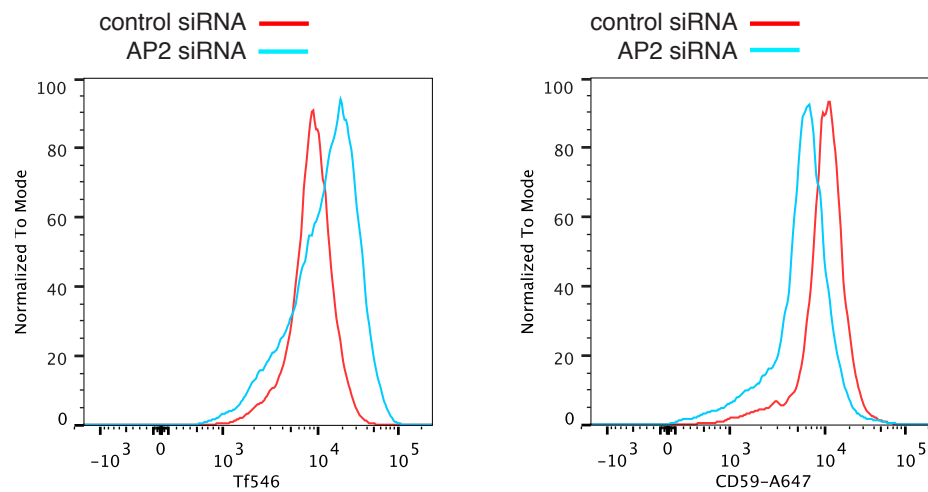


Figure 4-figure supplement 1. Verification of changes in plasma membrane protein levels detected by SILAC. Flow cytometry was used to analyse plasma membrane abundance of transferrin receptor and CD59. Cells were transfected with control siRNA or siRNA to knock down expression of the alpha adaptin subunit of the AP2 complex ('AP2 siRNA') and then labeled at 4°C with anti-CD59-AlexaFluor647 and Transferrin-546.