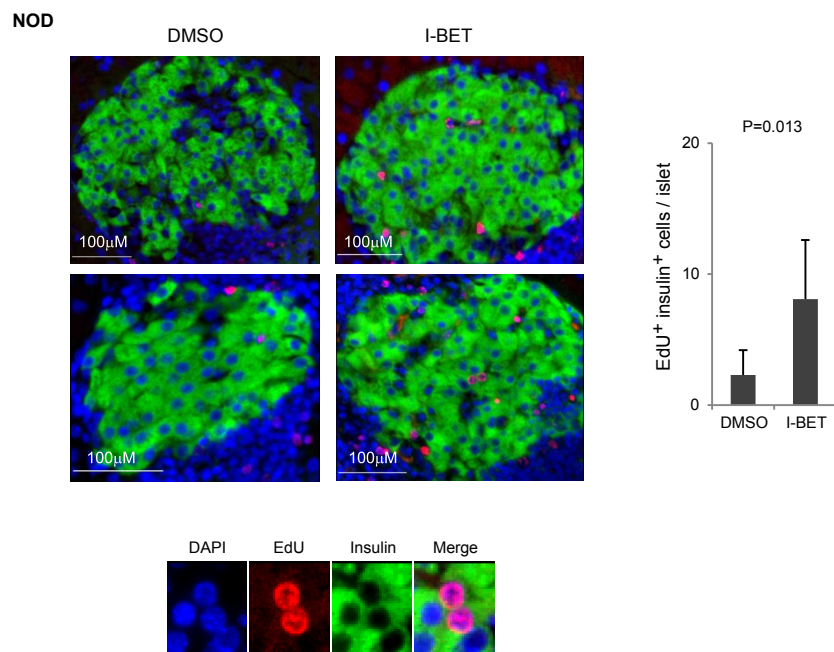


Figure 6-Supplement 1



**Histologic analysis of  $\beta$ -cell proliferation in response to I-BET151 in NOD mice.**

NOD mice were treated with I-BET151 or DMSO as in Fig. 1b. EdU was administered during the last 24 hours. Frozen sections of pancreas were stained for insulin and EdU. Left, representative islet images; two for each condition; right, summary quantification. Small images in are color legends for insulin, EdU and DAPI, respectively. Red, EdU; green, insulin; blue, DAPI.