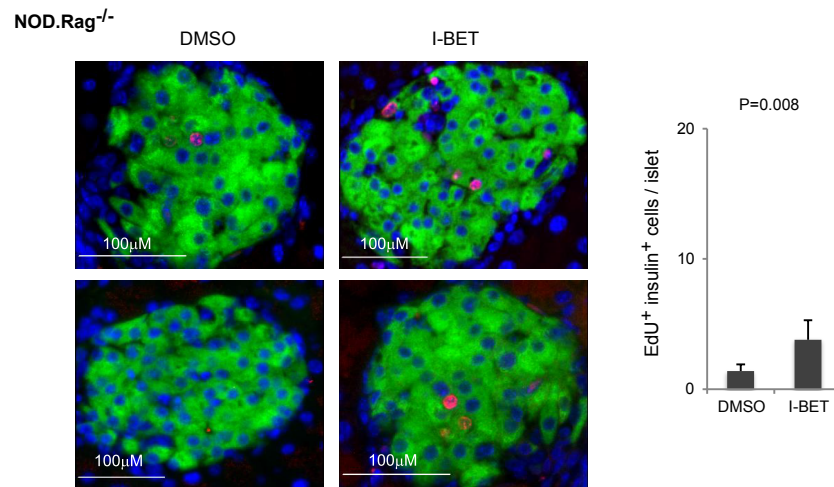


Figure 6-Supplement 2



Histologic analysis of β -cell proliferation in response to I-BET151 in NOD.Rag^{-/-} mice
NOD.Rag^{-/-} mice were treated with I-BET151 or DMSO as in Fig. 1b. EdU was administered during the last 24 hours. Frozen sections of pancreas were stained for insulin and EdU. Left, representative islet images, two for each condition; right, summary quantification.