

Figure 5 Supplement 1

Tan et al,

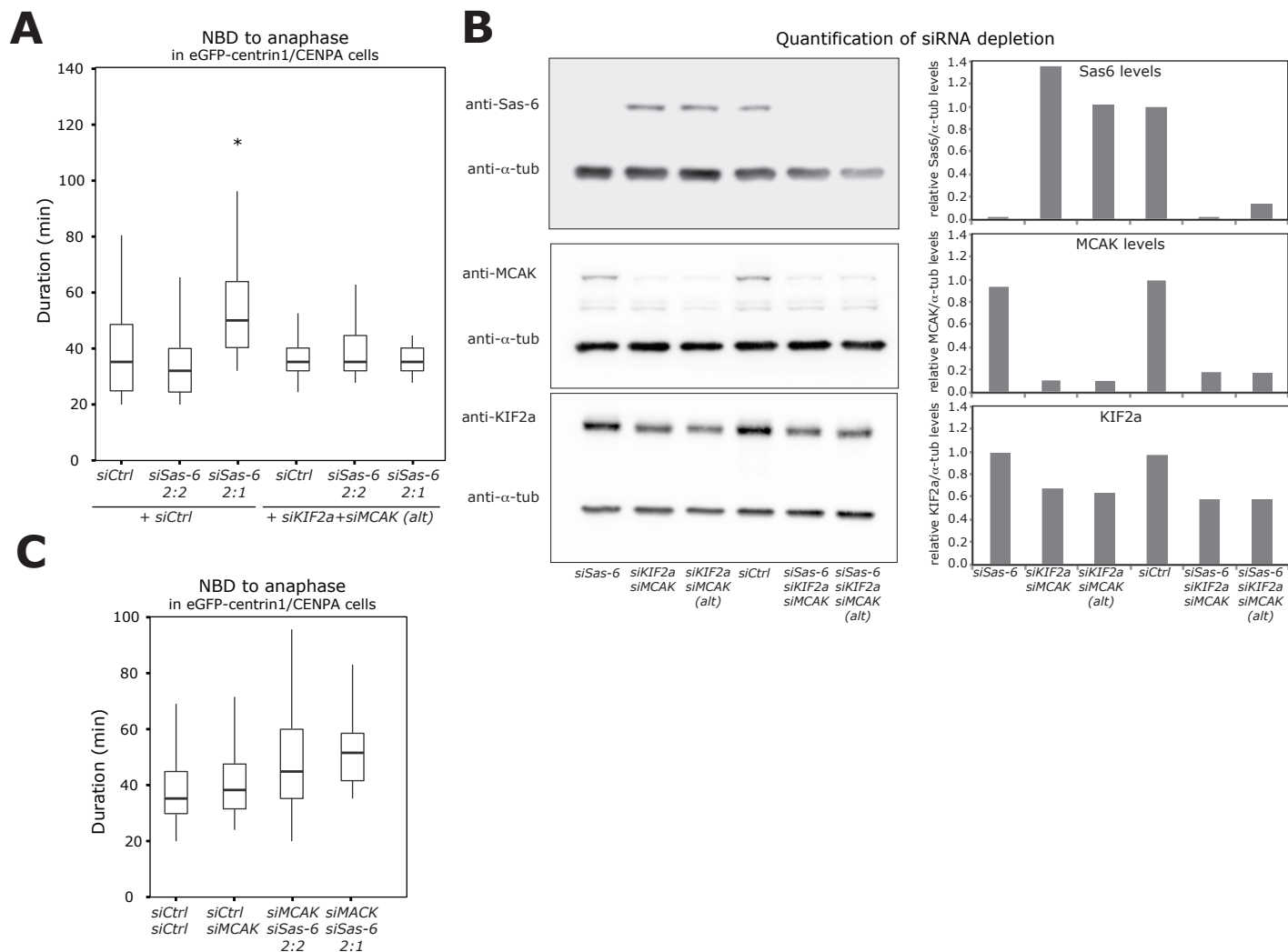


Figure 5 Supplement 1: Validation of Sas-6, KIF2a and MCAK co-depletion. (A) Boxplots of anaphase timing of *siControl*, *siSas-6* 2:2, *siSas-6* 2:1, *siCtrl/KIF2a/MCAK*, *siKIF2a/MCAK/Sas-6* 2:2 and *siKIF2a/MCAK/Sas-6* 2:1 eGFP1-centrin1/CENPA cells. n = 14-78 cells in 3 independent experiments. Note that *siSas-6* 2:1 cells are delayed compared to *siSas-6* 2:2 cells (p < 0.00001 in Mann-Whitney test), but that *siKIF2a/MCAK/Sas-6* 2:1 are not delayed compared to *siKIF2a/MCAK/Sas-6* 2:2 cells. **(B)** Immunoblots of eGFP1-centrin1/H2B-mRFP cells treated with the indicated siRNA and probed with anti-Sas6, anti-MCAK, anti-KIF2A and anti-α-tubulin (loading control) antibodies. The relative ratio with the α-tubulin signal is quantified for each condition on the right panels. Note the KIF2a siRNA only led to a partial depletion. **(C)** Boxplots of anaphase timing of *siControl*, *siCtrl/MCAK*, *siMCAK/Sas-6* 2:2, *siMCAK/Sas-6* 2:1 eGFP1-centrin1/CENPA cells. n = 9-169 cells in 3 independent experiments.