

Figure 4-supplement 3

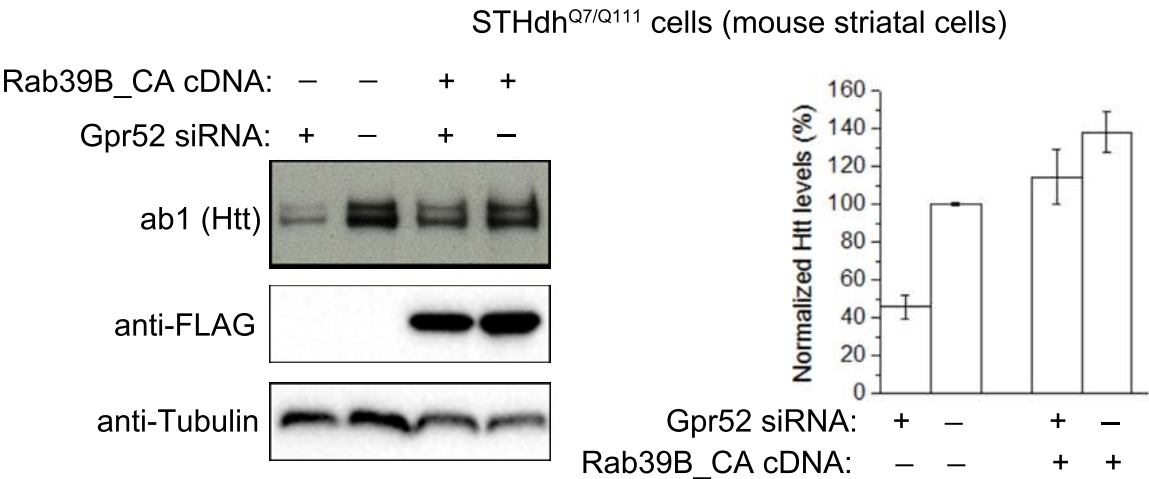


Figure 4-supplement 3. Constitutively active Rab39B blunts Gpr52’s effect

Left: Representative western-blot of Htt (ab1), consitutively active Rab39B (anti-FLAG for Rab39B_CA), and the loading control (Tubulin). “-” indicates the empty vector or scrambled siRNA controls. Right: quantification of the normalized Htt signals, n = 4.