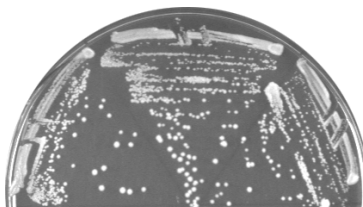
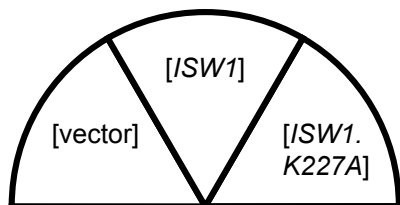
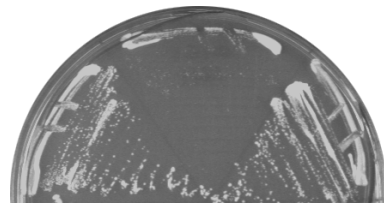
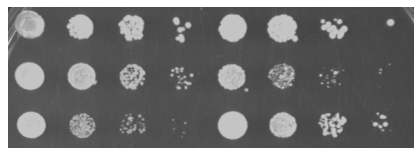


A

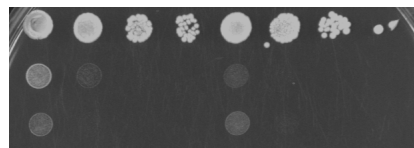
SC-URA 30°C



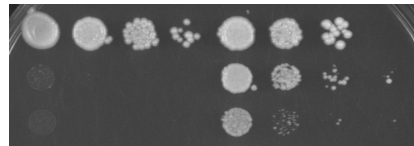
SC-URA 32°C

B***ISW2*⁺*****ISW2*^Δ***RSC2**rsc2 V457M**rsc2 D461G*

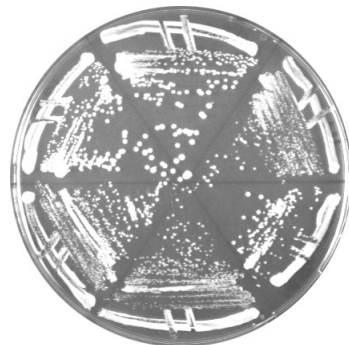
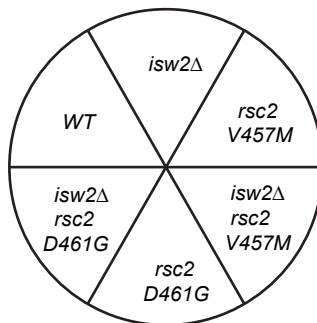
SC-TRP 30°C

*RSC2**rsc2 V457M**rsc2 D461G*

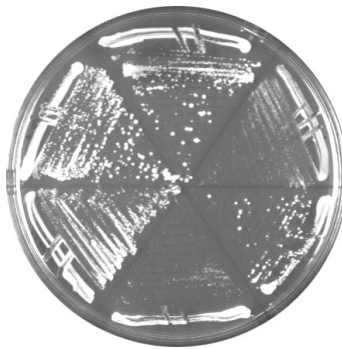
SC-TRP 32°C

*RSC2**rsc2 V457M**rsc2 D461G*

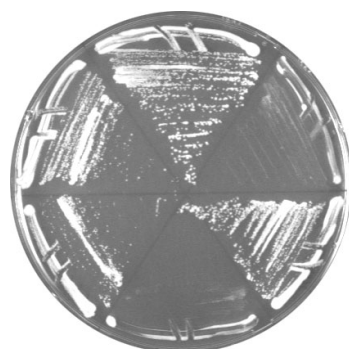
YPD +12 μg/ml Benomyl

C

SC-URA



SC-URA + 150μg/ml 6AU



SC-URA + 20μg/ml MPA