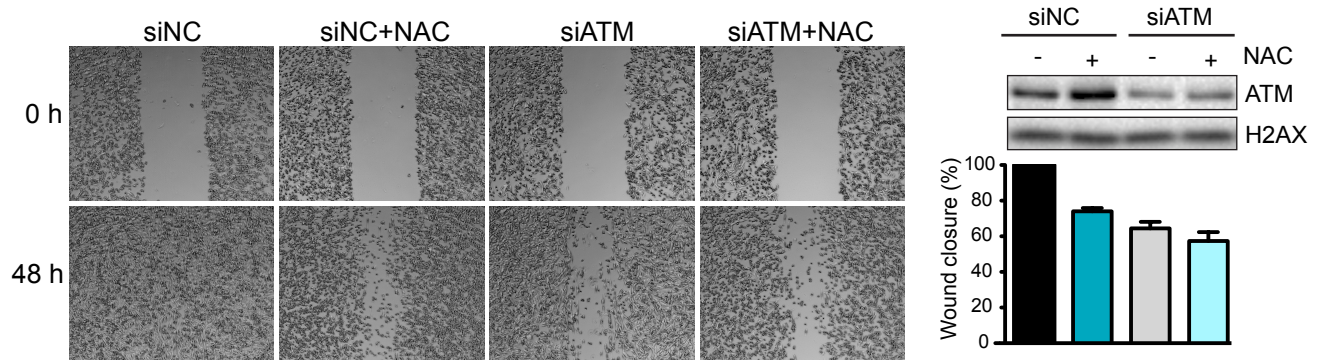


Figure 2-figure supplement 1



**Figure 2—figure supplement 1.** Inhibition of oxidative stress reduces cell migration and invasion. ROS inhibitor NAC reduces cell migration to a similar extent as ATM-depletion. siATM and siNC control MDA-MB-231 cells were either untreated or treated with NAC and analyzed as in Figure 2D for cell migration. Right panel: Western blot of ATM depletion and quantification of cell migration for each sample.