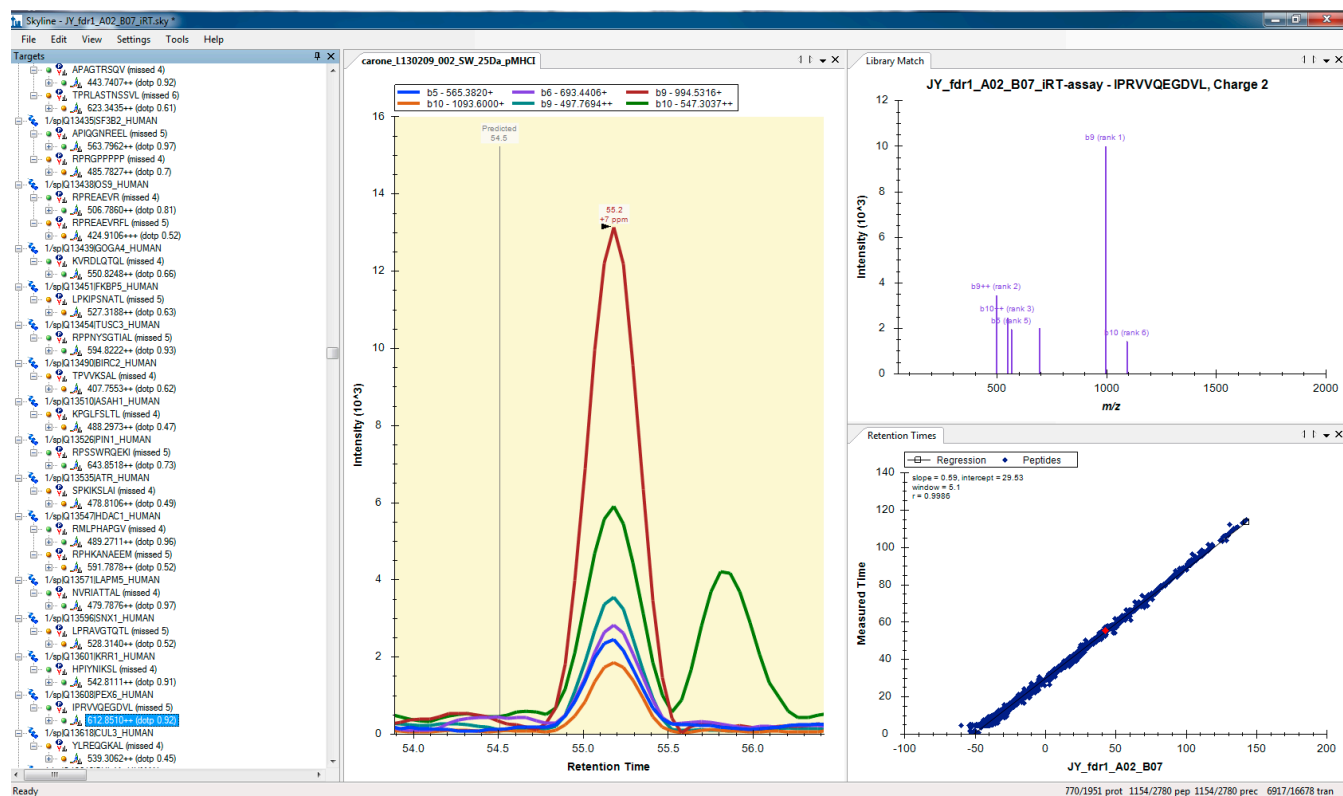


A



B

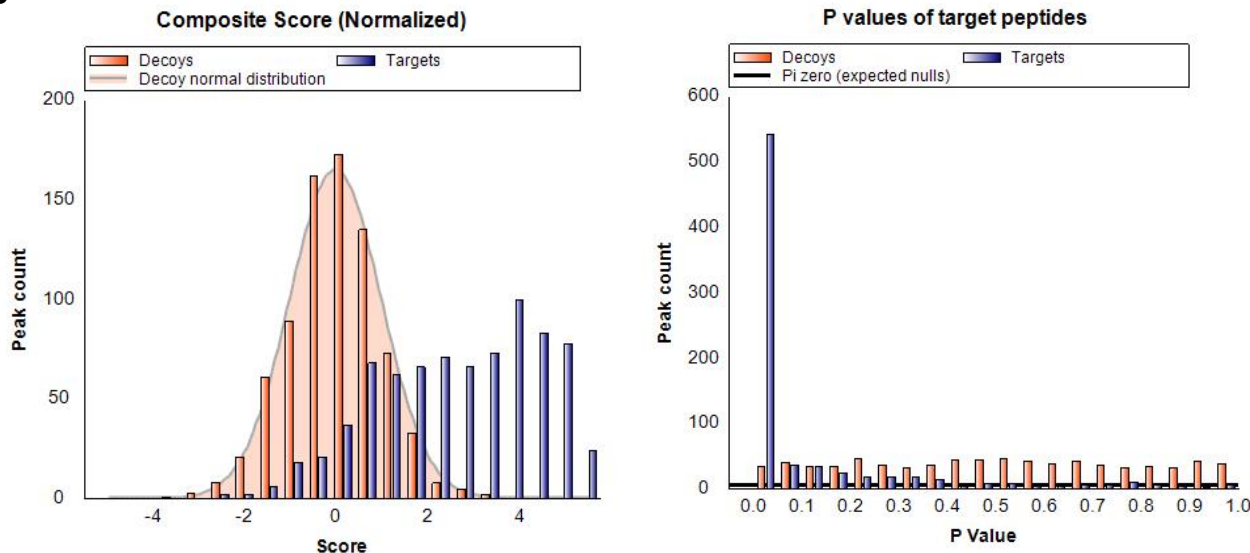


Figure 3—figure supplement 7. Visualization and analysis of SWATH-MS HLA peptidomic data in Skyline. Skyline is a free open-source software for targeted data analysis of various types of peptidomic data. It specifically facilitates manual and automated analysis of SWATH data and other data-independently acquired MS data using assay libraries. The software itself can be downloaded from the website: <http://skyline.maccosslab.org>. (A) Skyline-daily or Skyline v2.6 was used to import HLA peptide SWATH assay libraries, and to import, extract, and visualize SWATH HLA peptidomic data. (B) The ‘Advanced Peak Picking Models’ was used to work with decoy transition groups and for large-scale, automated SWATH data analysis. For more information, see Schubert et al. (2015).