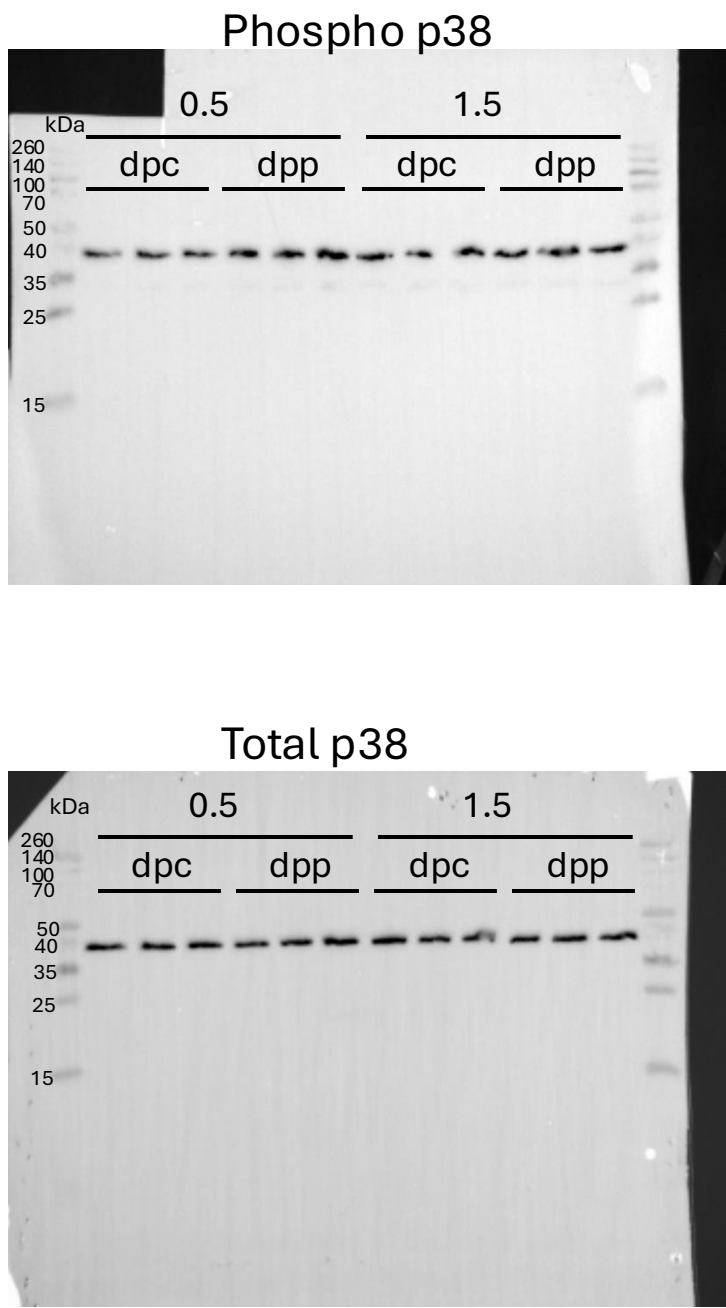


Figure 3 - source data 2



**Figure 3 - source data 2:** Immunoblotting of phosphorylated p38 and total p38 in the whole oviduct collected at 0.5 dpc, 0.5 dpp, 1.5 dpc, and 1.5 dpp. Each lane represents protein samples from each mouse. A protein ladder was used to determine molecular weights (Spectra™ Multicolor Broad Range Protein Ladder, ThermoFisher, #26634). (n=3 mice/group/timepoint)