

Figure 1A, Secretion analysis of TseP, TseP^N, and TseP^C in the SSU triple effector deletion mutant ($\Delta 3eff$). A schematic of the TseP N-terminus (TseP^N, 1-603 aa) and C-terminus (TseP^C, 604-845 aa) is depicted at the top. Hcp serves as a positive control for T6SS secretion. Hcp, RpoB, and 3V5-tagged TseP proteins were detected using specific antibodies.

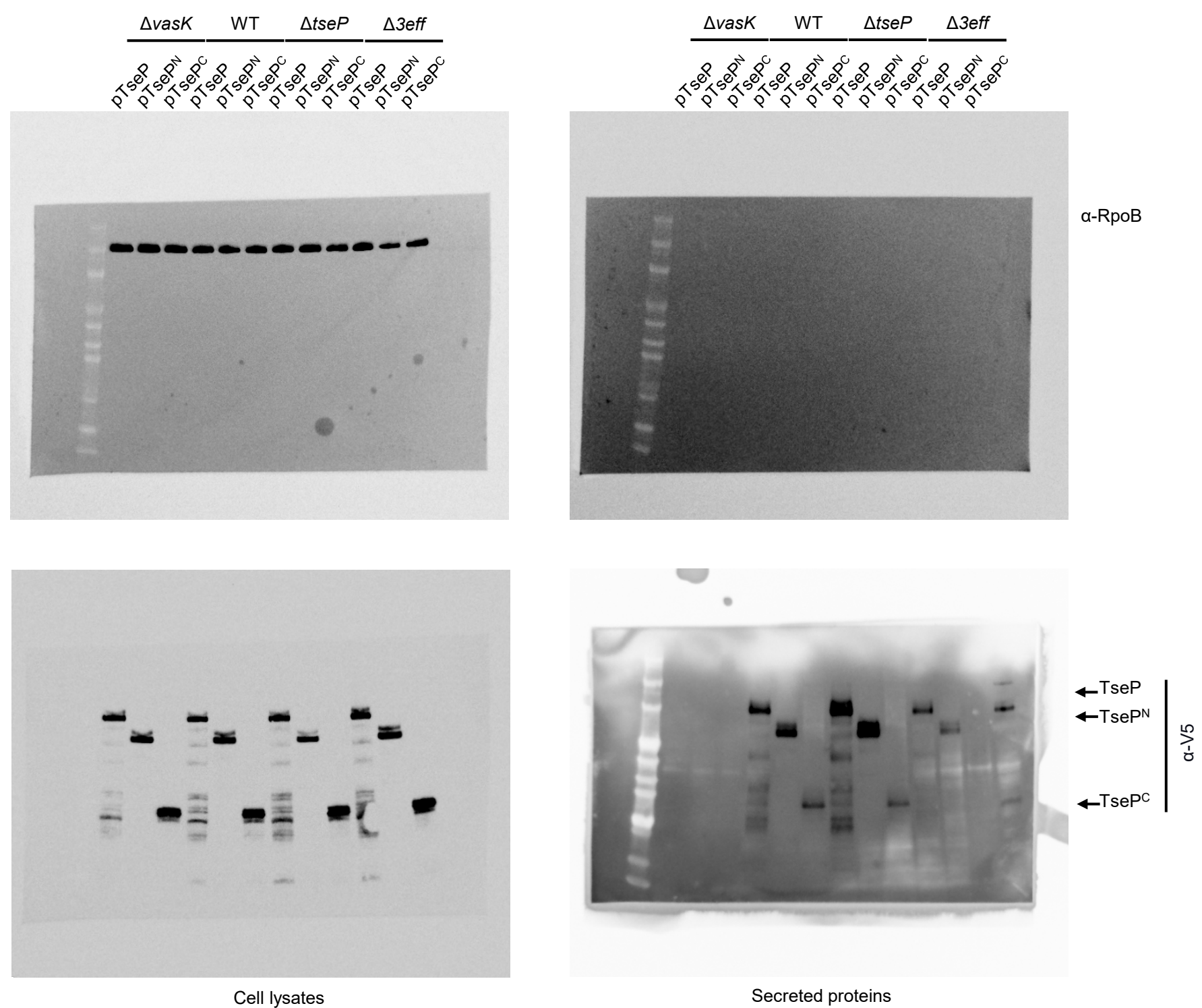


Figure 1 D, Secretion analysis of TseP, TseP^N, and TseP^C in SSU wild type, $\Delta vasK$, $\Delta tseP$, and $\Delta 3eff$ mutants. TseP, TseP^N, and TseP^C were tagged with a 3V5 C-terminal tag and expressed on pBAD vectors. RpoB serves as an equal loading and autolysis control.

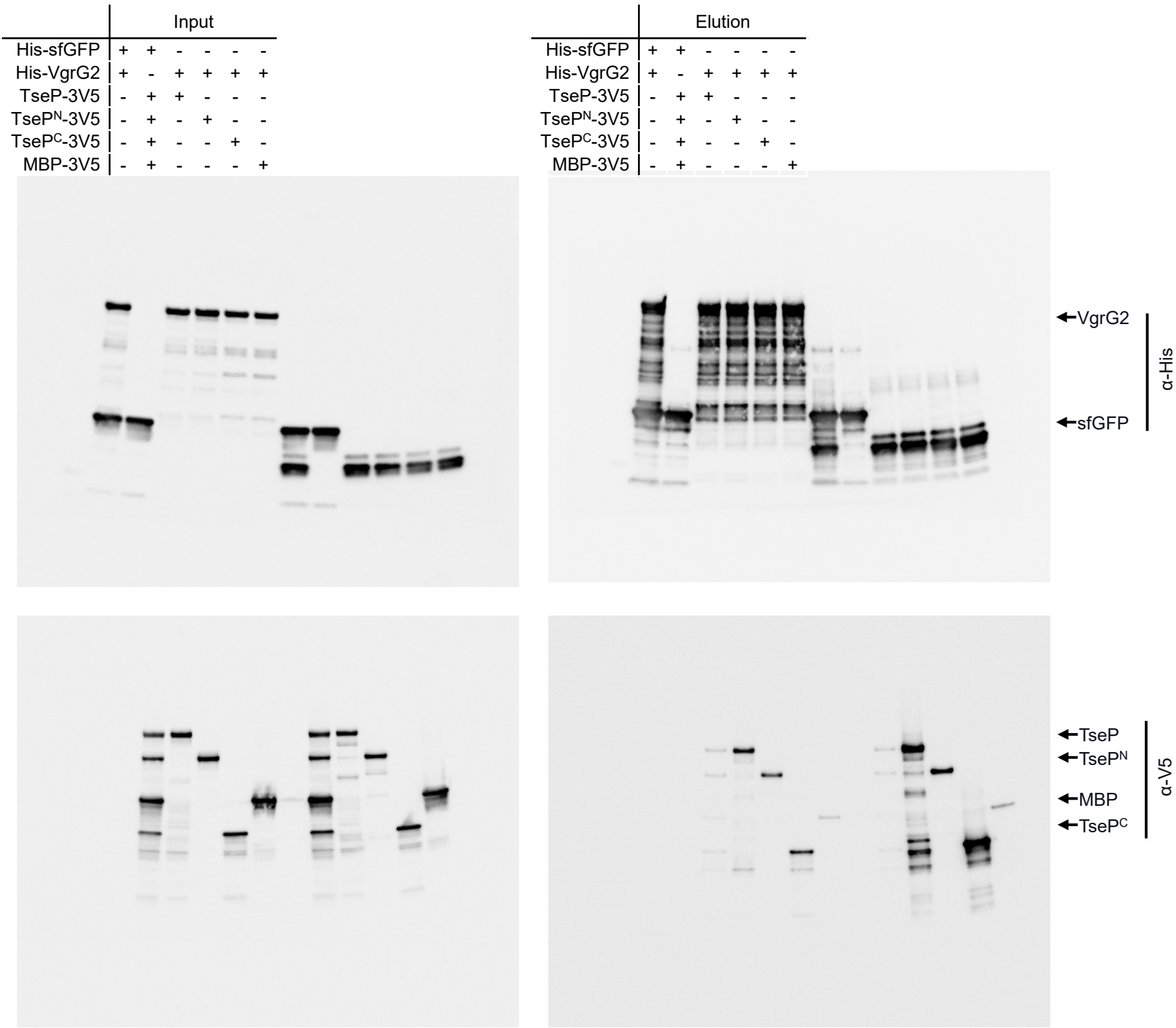


Figure 1E, Pull-down analysis of VgrG2 with TseP, TseP^N, and TseP^C. His-tagged VgrG2 and 3V5-tagged TseP, TseP^N, or TseP^C were used. His-tagged sfGFP and 3V5-tagged MBP were used as controls.