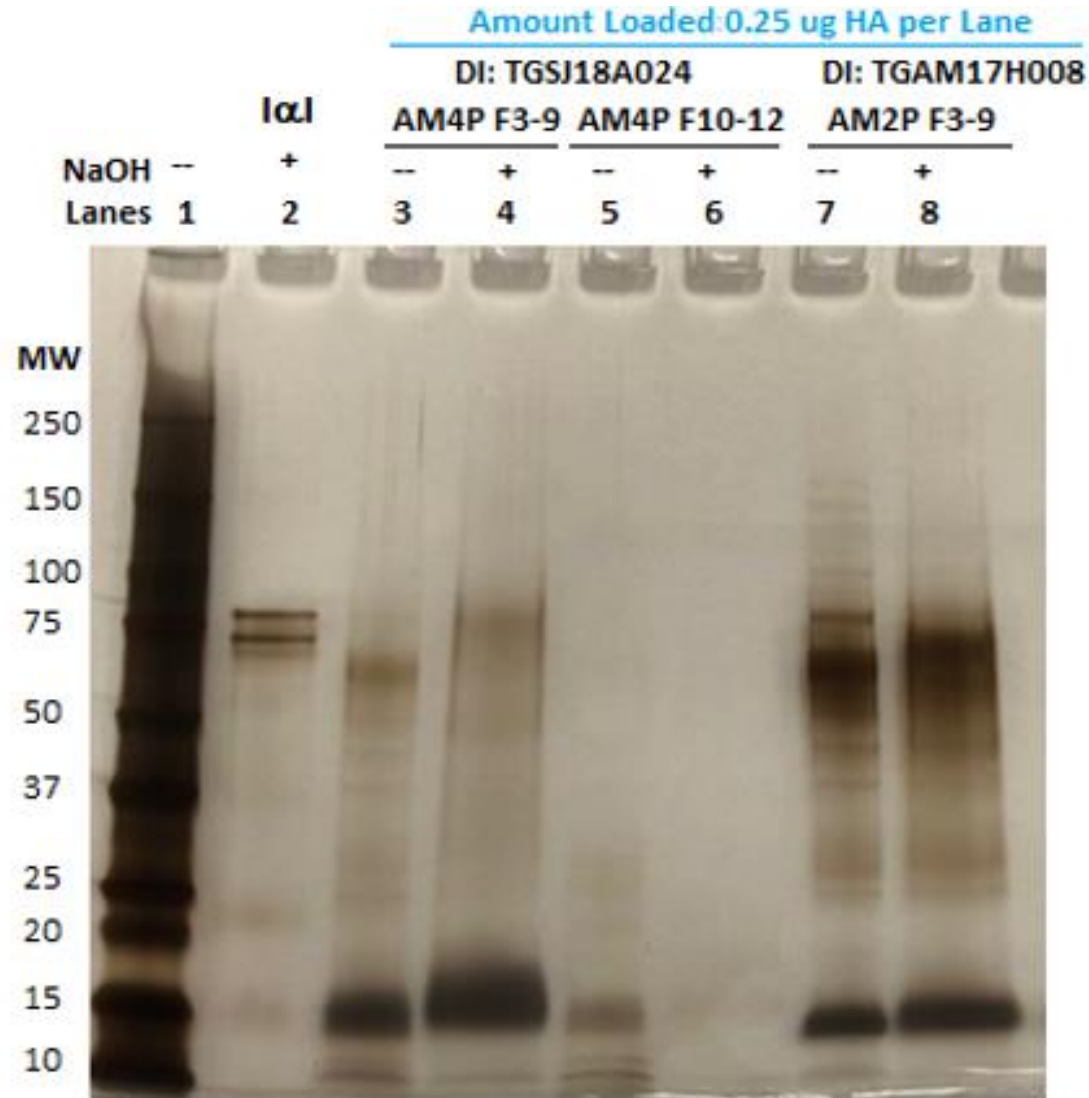


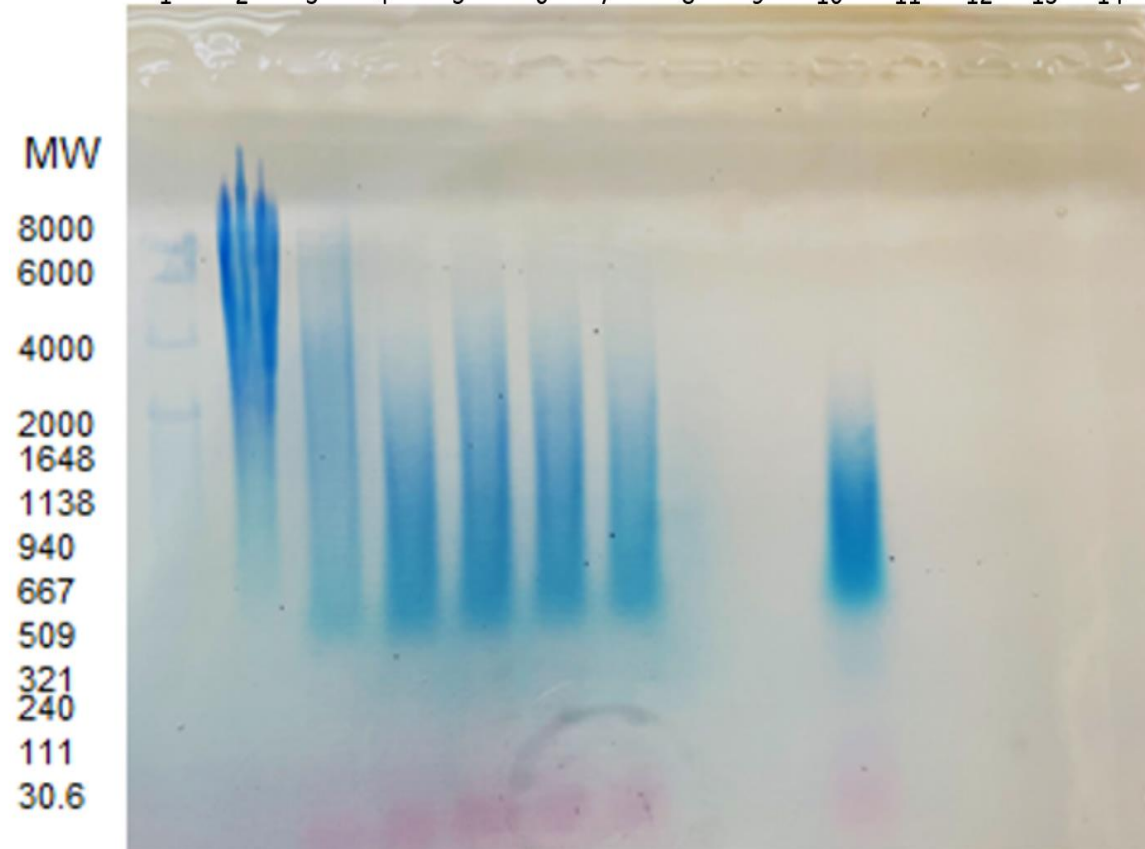
# Full unedited gel for Figure 3-figure supplement 1A



Lanes 1 – 4, 7,8 are shown in Fig. S4A.  
Lanes 5, 6 is cut off because the data is not included in the manuscript.

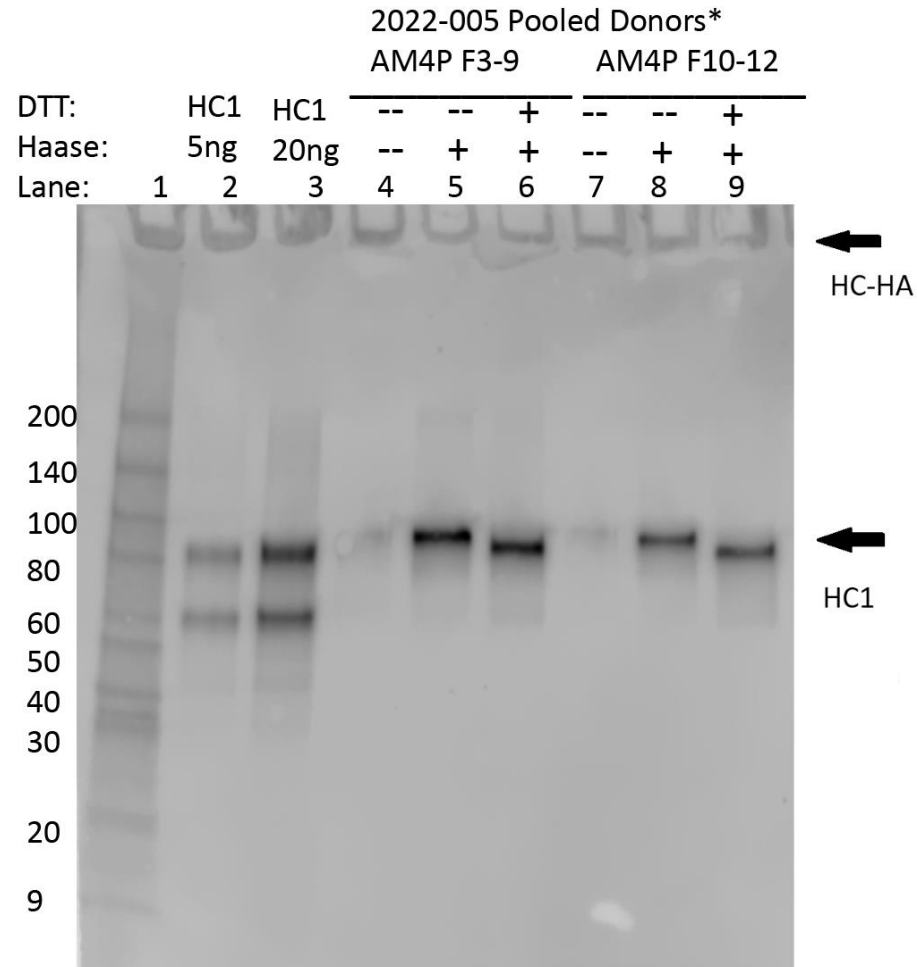
# Full unedited gel for Figure 3-figure supplement 1B

	M	HA	IRM				x	x	IRM	x	PBS	x	IRM	
			4 h	24 h	48 h	72 h								
NaOH	-	-	-	-	-	-	x	x	-	x	-	x	-	
HAase	-	-	-	-	-	-	x	x	-	x	+	x	+	
95°C	-	-	-	-	-	-	x	x	+	x	+	x	+	
	1	2	3	4	5	6	7	8	9	10	11	12	13	14



Lanes 1 – 3 are shown in Fig. S4B.  
Lanes 4 – 14 is cut off because the data is not included in the manuscript.

# Full unedited gel for Figure 3-figure supplement 1C

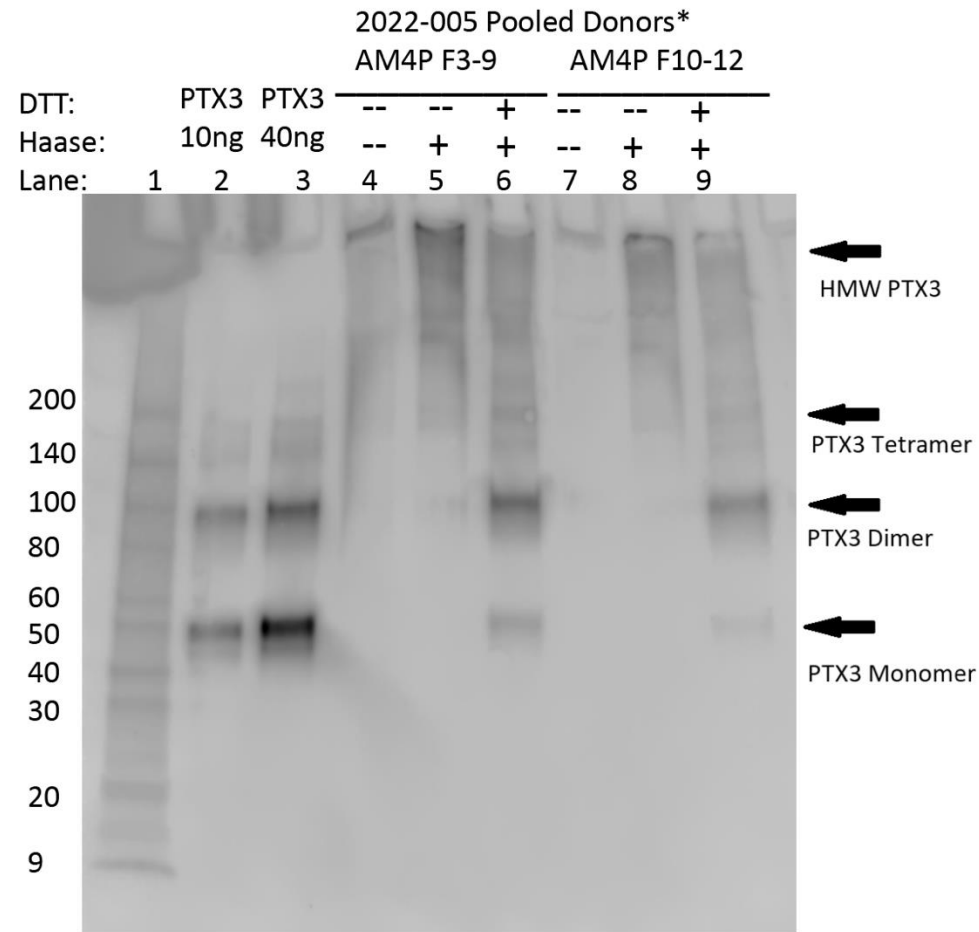


Lanes 1 – 6 are shown in Fig. S4C.  
Lanes 7 – 9 is cut off because the  
data of AM4P F10-12 is not included  
in the manuscript.

Exposure: 4 minutes

\*Pooled Donors: TGBK2022C018, TGRR22C035, TGSM22C009  
TGBA22C022, TXM22C013, TGJX22C021, TGBA22C023

# Full unedited gel for Figure 3-figure supplement 1D



Lanes 1 – 6 are shown in Fig. S4D.  
Lanes 7 – 9 is cut off because the data of AM4P F10-12 is not included in the manuscript.

Exposure: 4 minutes

\*Pooled Donors: TGBK2022C018, TGRR22C035, TGSM22C009  
TGBA22C022, TXM22C013, TGJX22C021, TGBA22C023