

Raw photograph file of Figure 3E

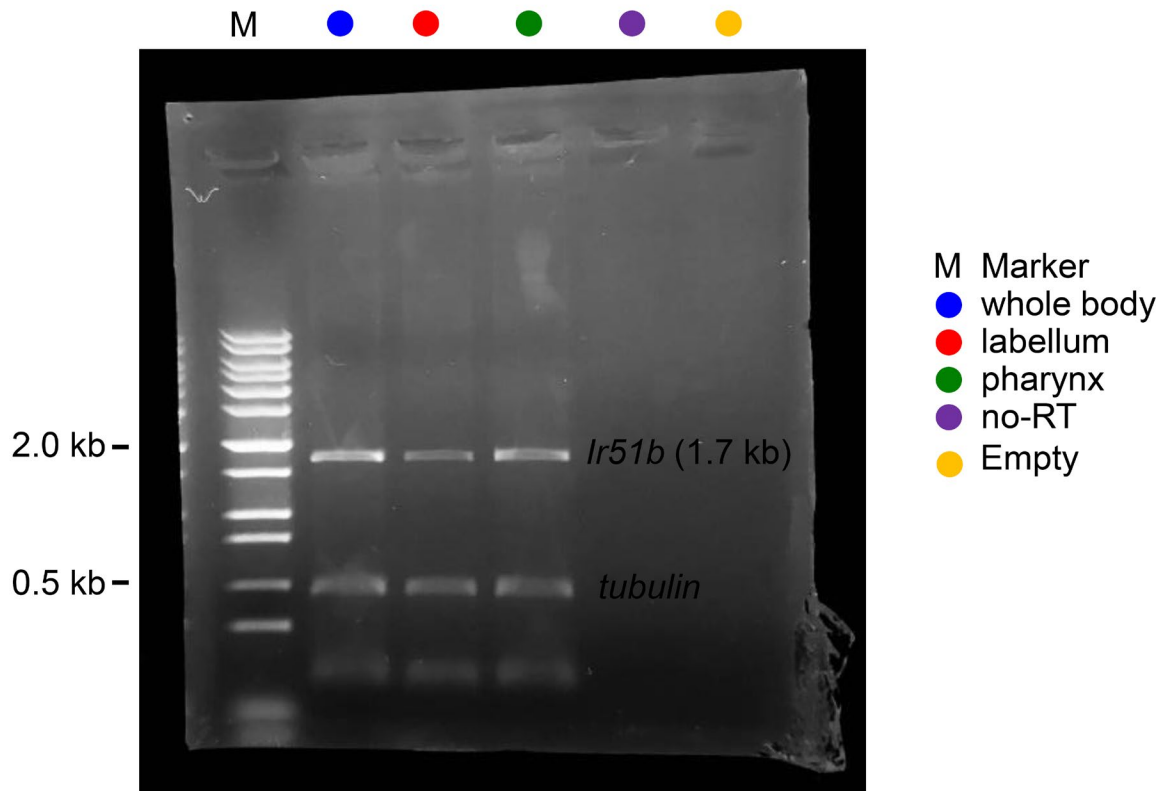


Figure 3—Source Data 2. Original gel picture to Figure 3, panel E. Given gel is the picture of RT-PCR resulting *Ir51b* expression in whole body, labellum, and pharynx. In lanes designated as "no-RT," polyA⁺ RNA extracts underwent RT omission, and the absence of PCR products serves as evidence of the absence of genomic DNA contamination. Amplified tubulin (0.5 kb) was used as control. DNA ladder marker is denoted by "M." Dots color represents respective organs indicated in the legend section. (lanes 6; is empty, not shown in figure 3E).