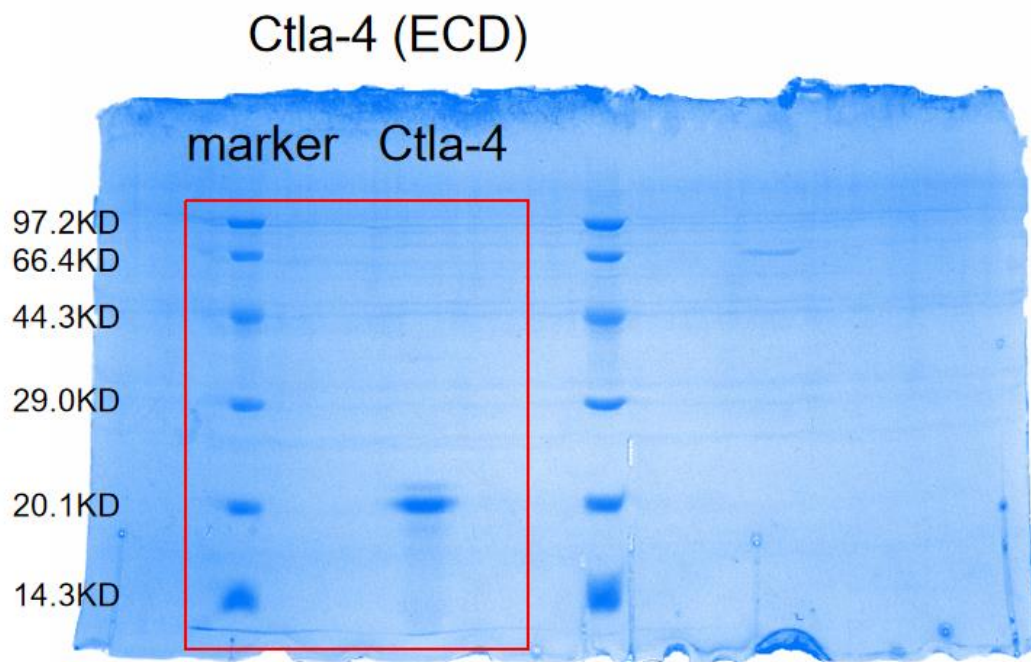
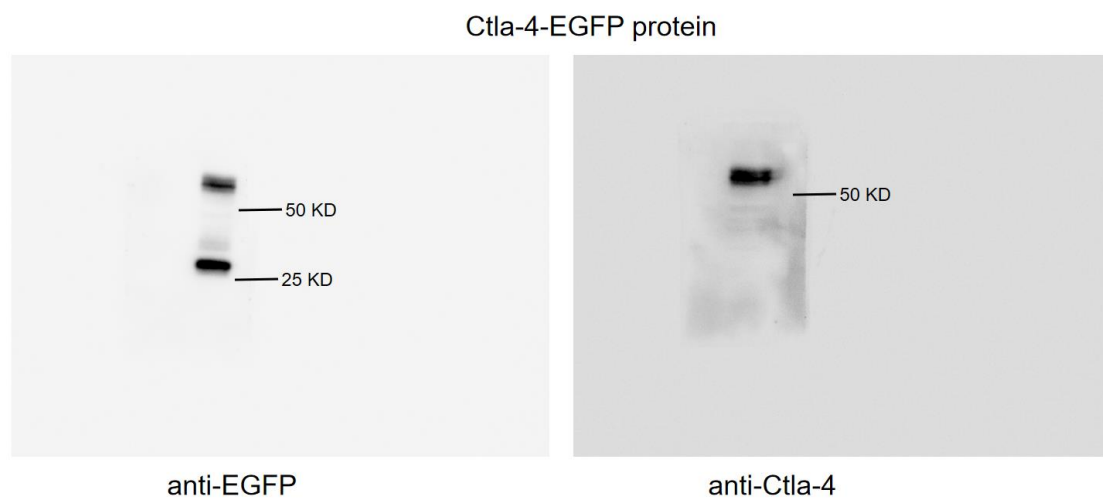


A



B



C



**Figure 1-figure supplement 2-Source Data 1.** PDF file containing original western blots for Figure 1-figure supplement 2A-C. A SDS-PAGE detection of the recombinant Cytotoxic T lymphocyte antigen-4 (Ctla-4) protein with extracellular domain (ECD). B Western blot analysis of the mouse anti-EGFP and anti-Ctla-4 antibodies that bind to the recombinant Ctla-4-EGFP fusion proteins expressed in HEK293T cells. C Western blot analysis of native Ctla-4 protein in zebrafish intestinal tissues using mouse anti-Ctla-4 antibody.