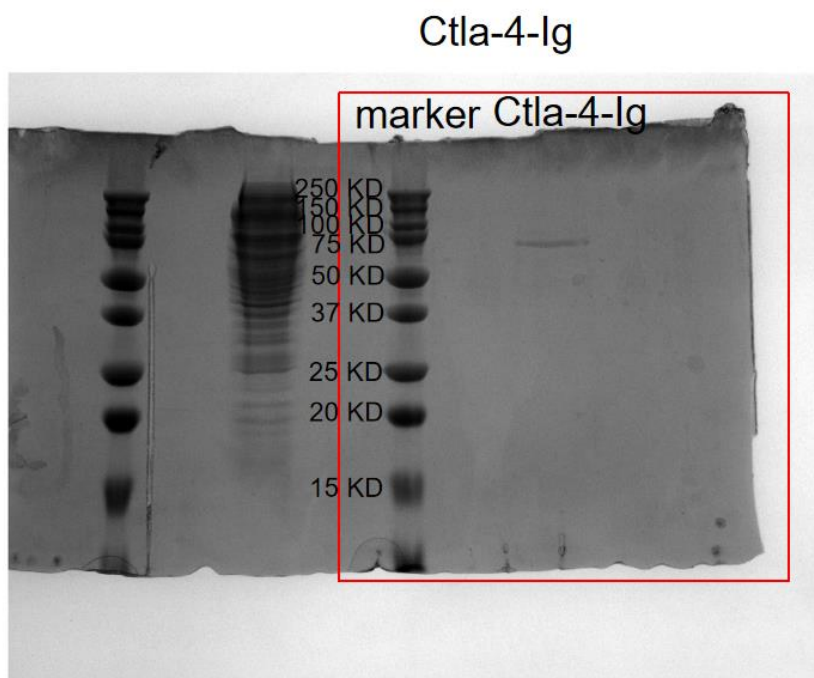
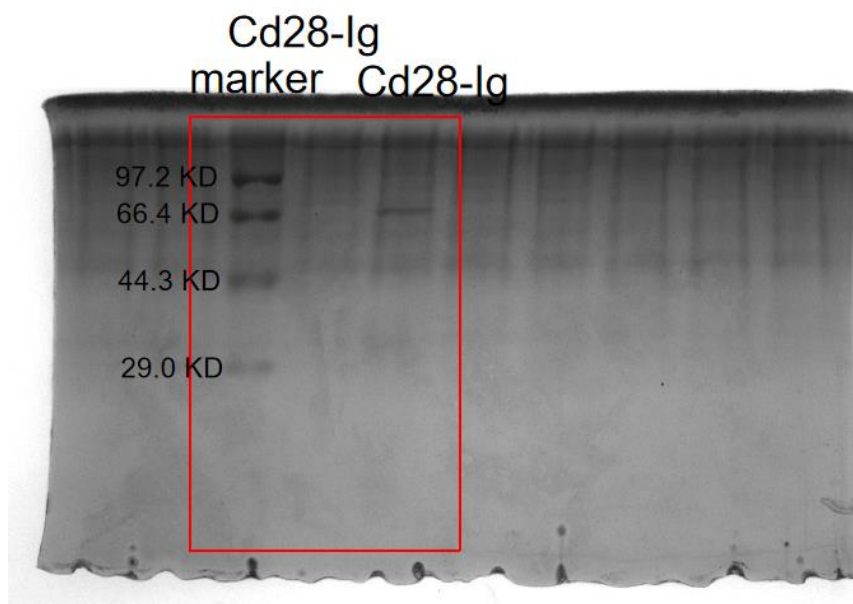


A



B



C

Cd80/86 (ECD)

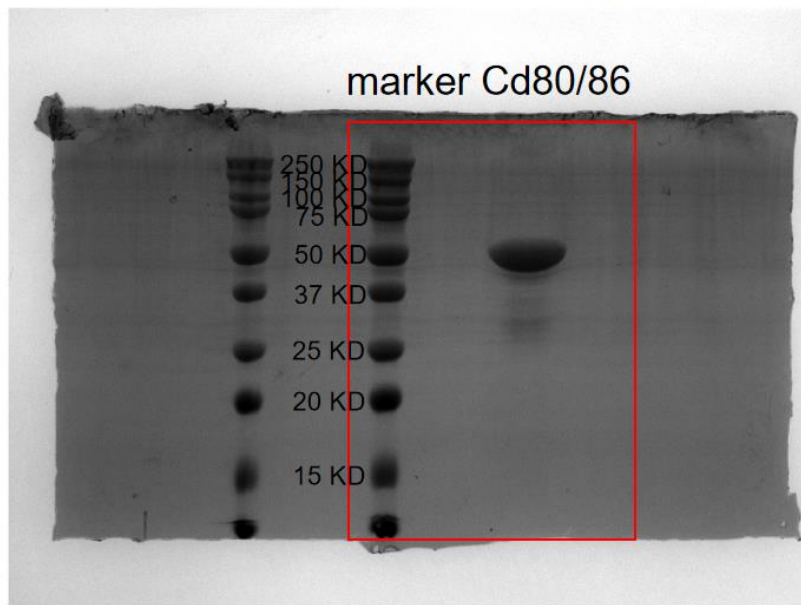


Figure 7-figure supplement 1-Source Data 1. PDF file containing original western blots for Figure 7-figure supplement 1A-C. SDS-PAGE detection of the purified recombinant soluble Ctla-4-Ig (sCtla-4) (A) and sCd28-Ig (B) proteins and the Cd80/86 extracellular domain (ECD) (C) with Coomassie brilliant blue staining.