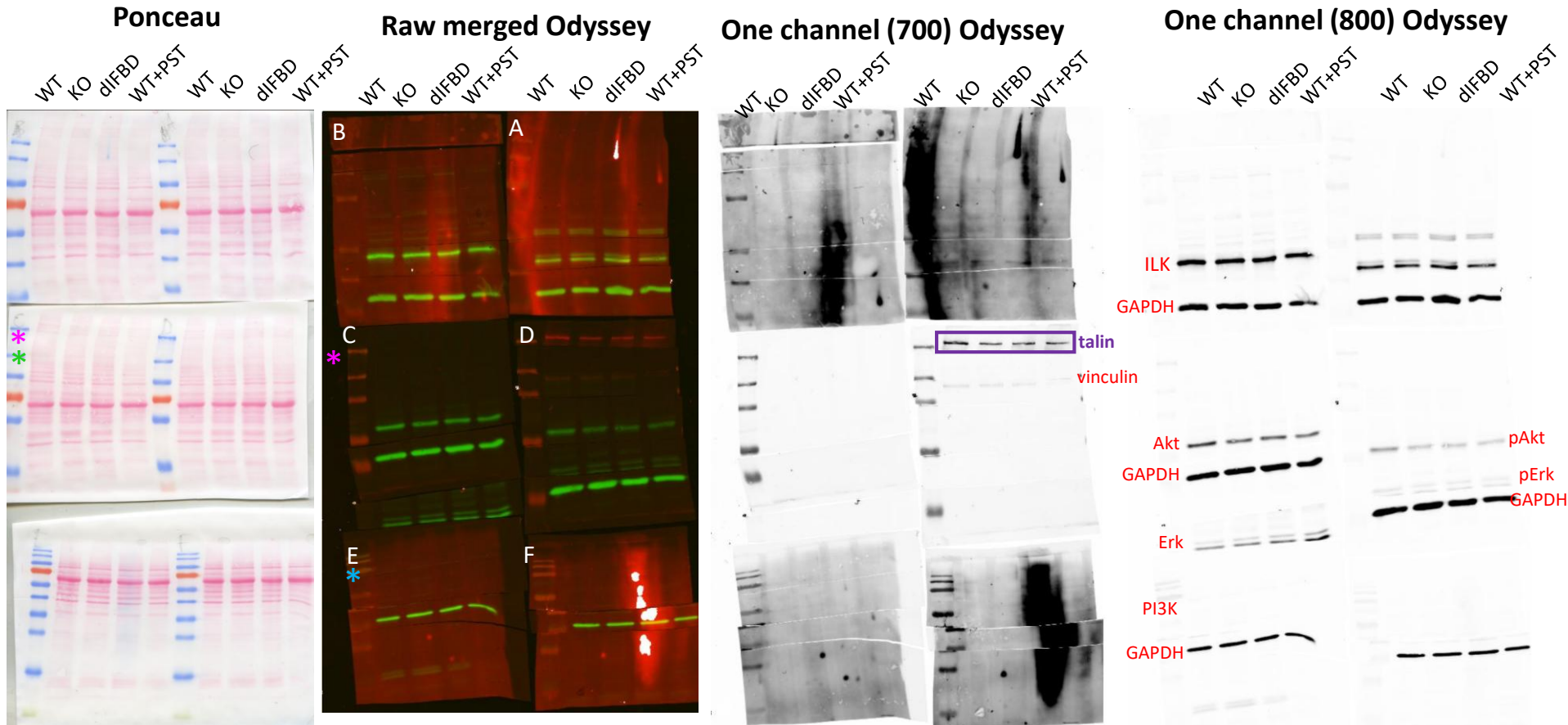
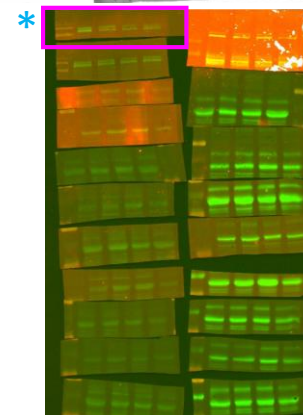
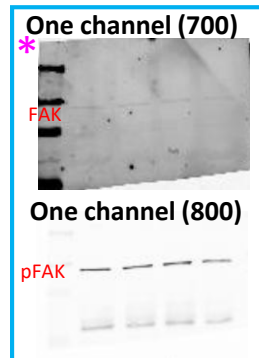
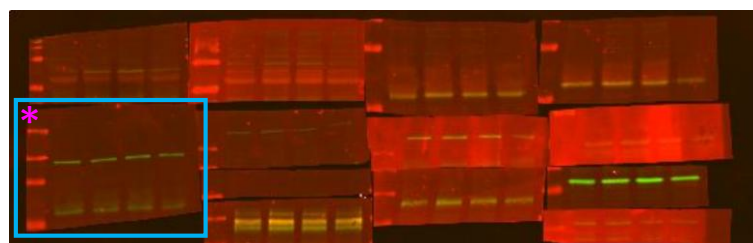


# SNU-475 replicate 1 (221209)

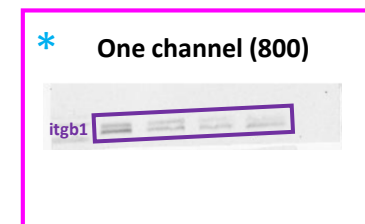
Figure 3 – figure supplement 1C



\* pFAK (rabbit 800) and FAK (mouse 700) remained on membrane C (file 230105)

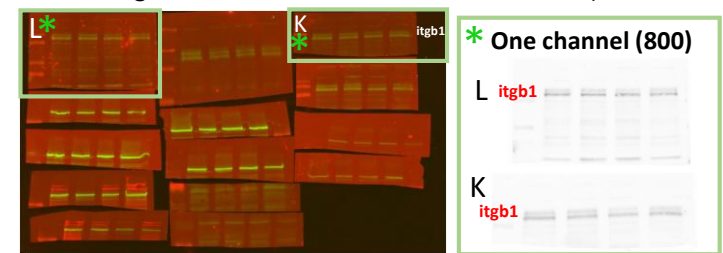
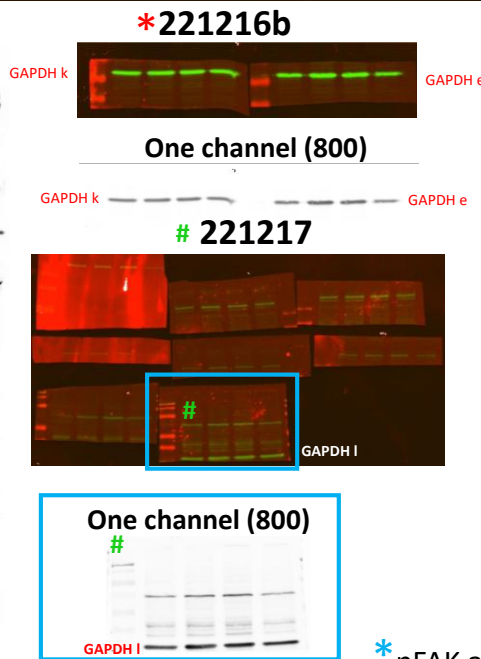
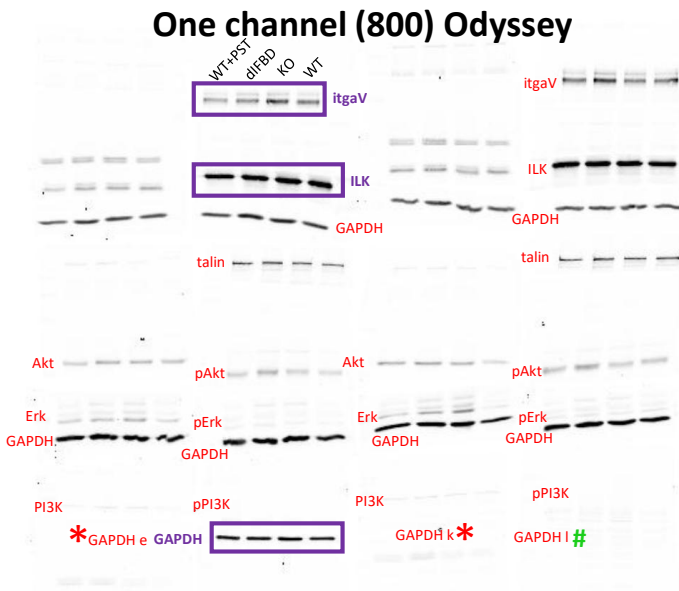
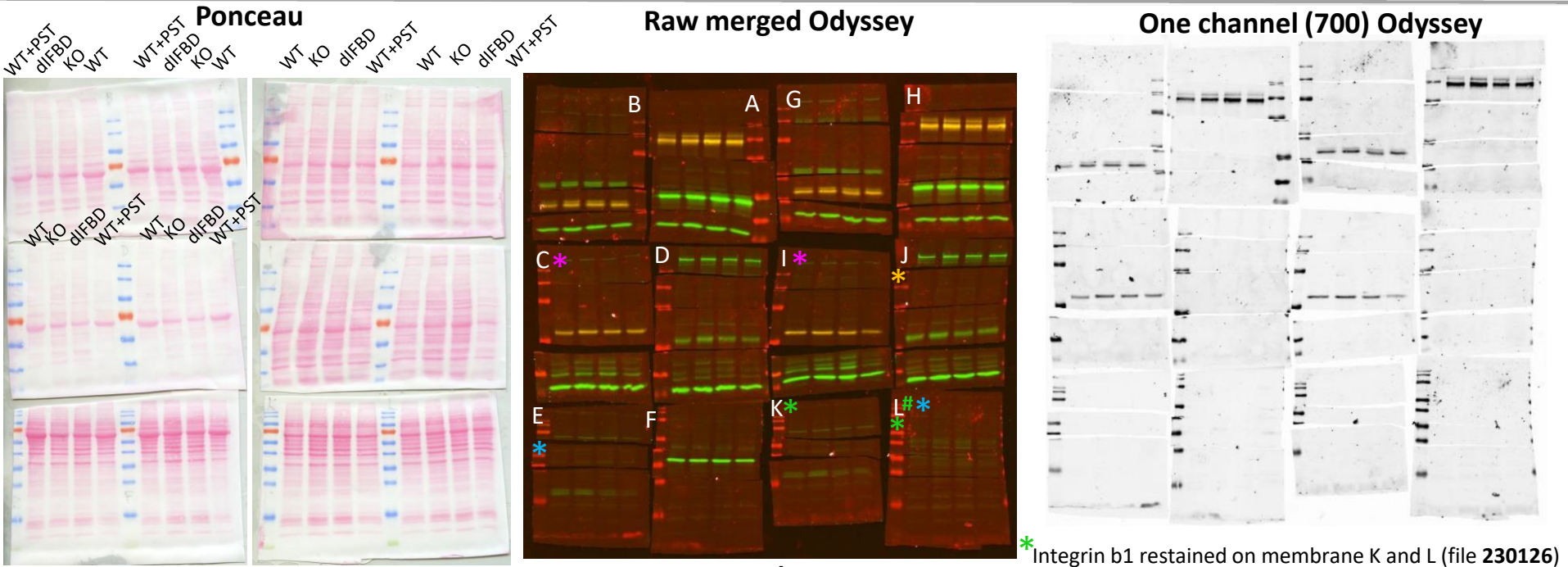


\* Integrin b1 stained on membrane E (file 230310)

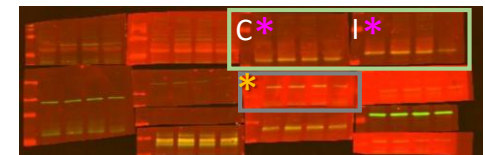


# SNU-475 replicate 2 and 3 (221216)

Figure 3 – figure supplement 1C



\* paxillin retained on membranes C and I  
\* vinculin retained on membrane J (file 230105)



\* pFAK and FAK retained on membranes L and E (see next page)

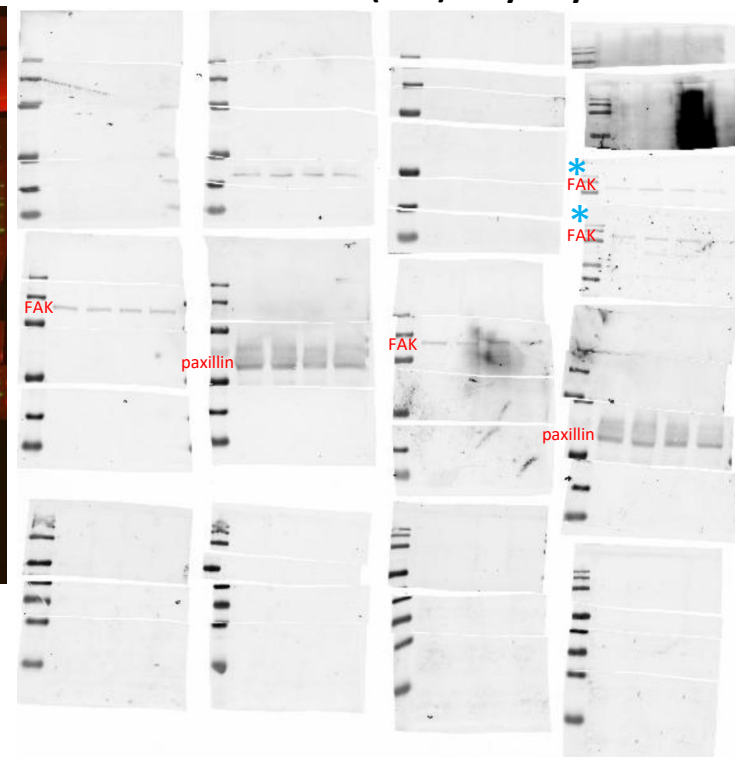
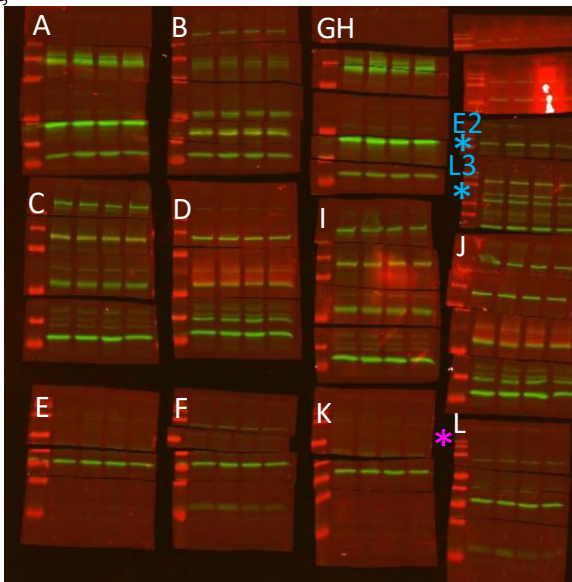
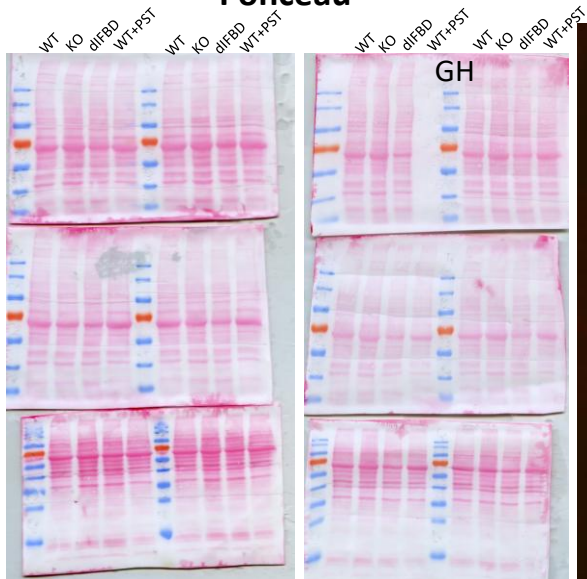
# SNU-475 replicate 4 and 5 (221221)

Figure 3 – figure supplement 1C

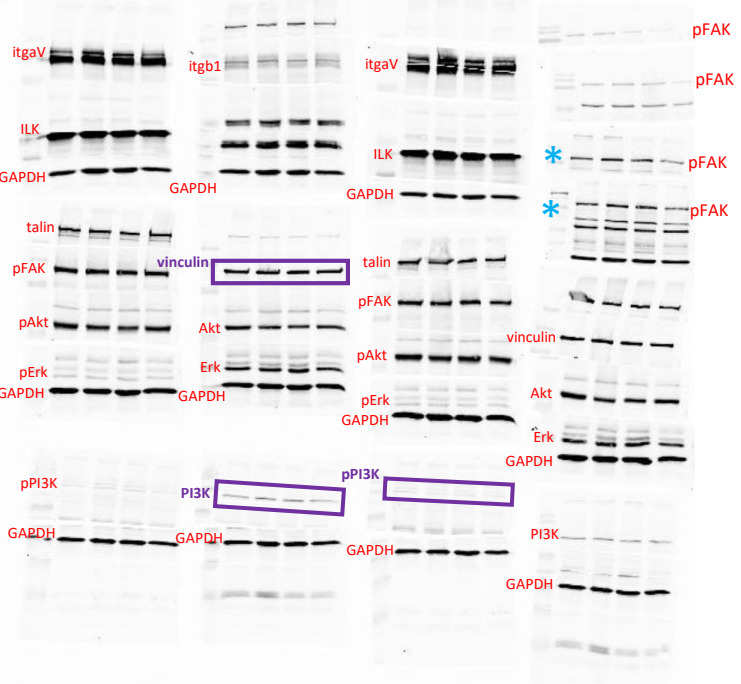
Ponceau

Raw merged Odyssey

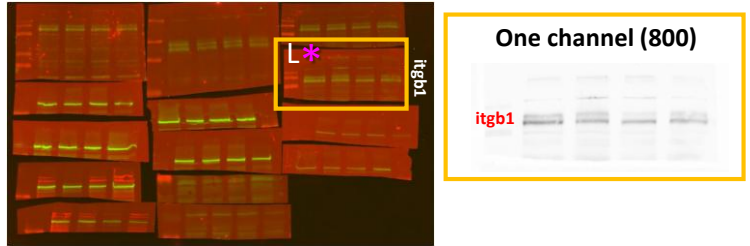
One channel (700) Odyssey



One channel (800) Odyssey

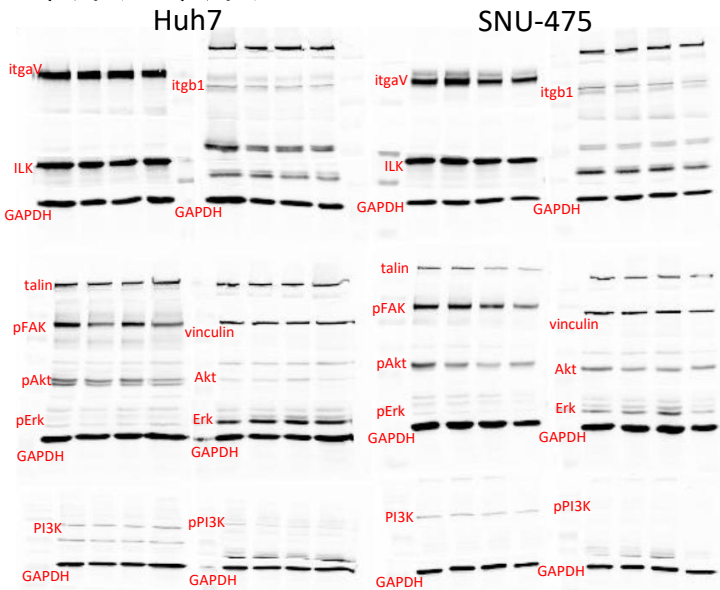
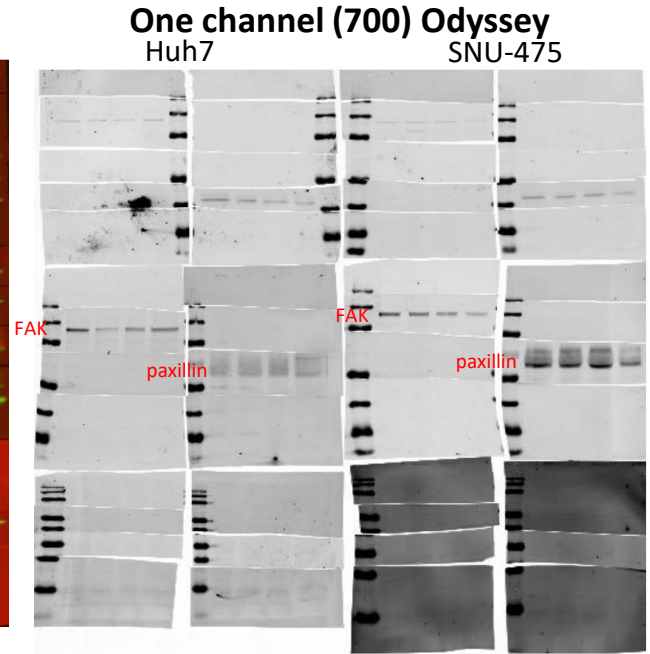
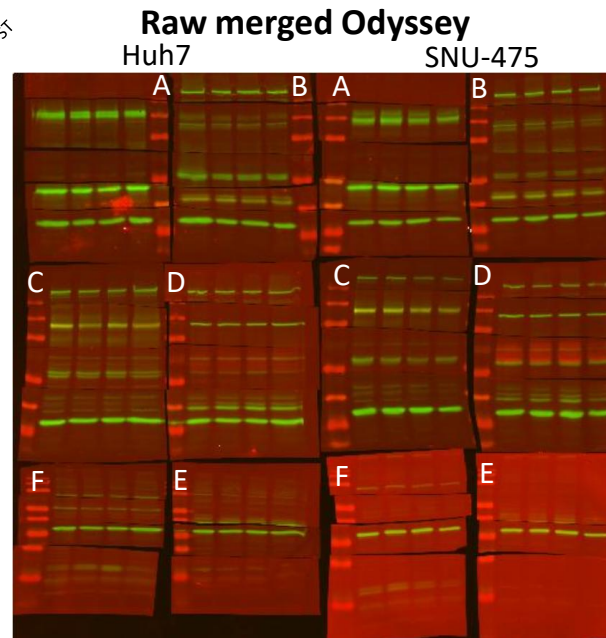
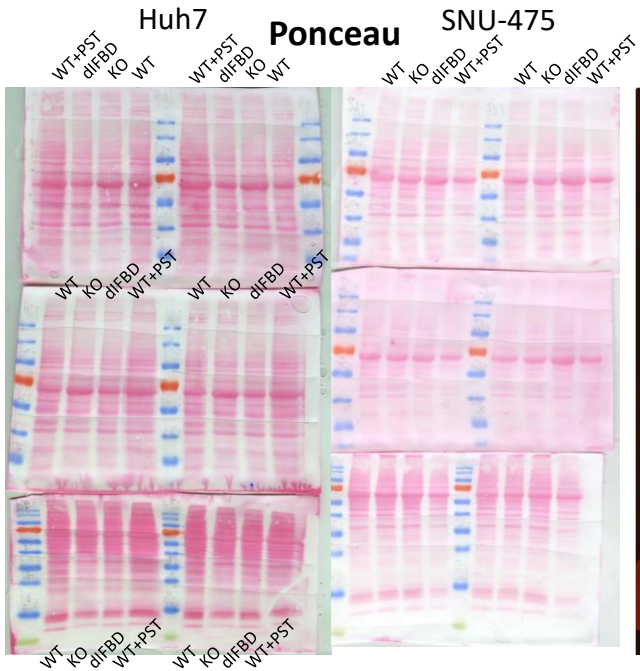


\* Integrin b1 of 5th replicate stained on membrane L (file 230126)



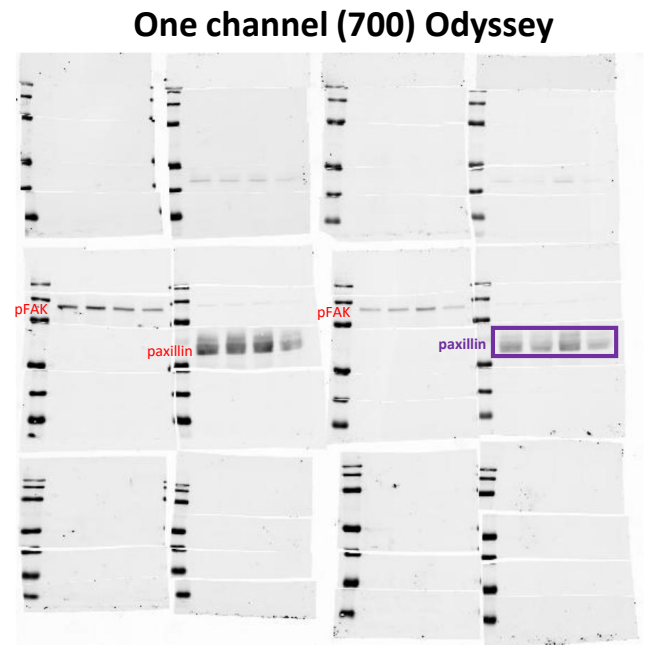
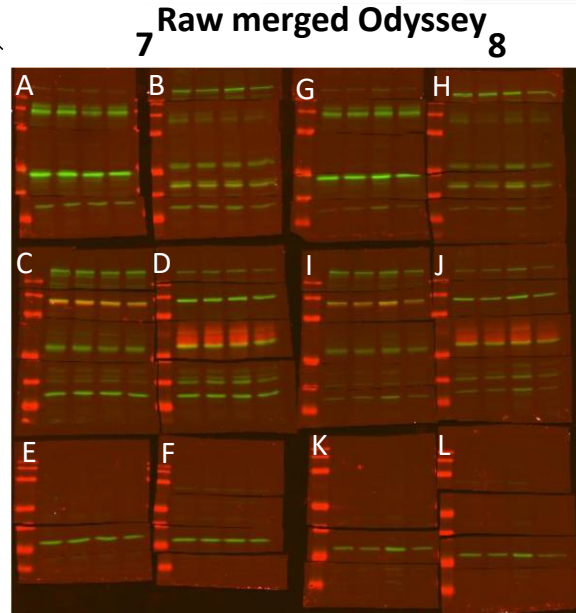
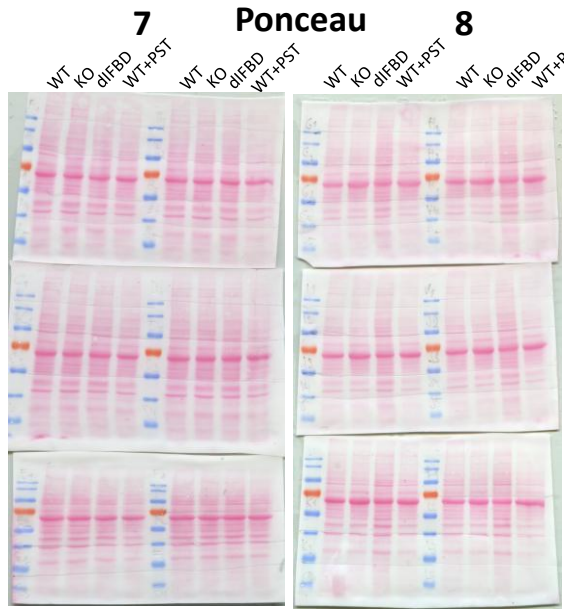
\* pFAK and FAK from 221216 remained on membrane E and L (see \* on previous page).

# Huh7 replicate 1 and SNU-475 replicate 6 (230125)

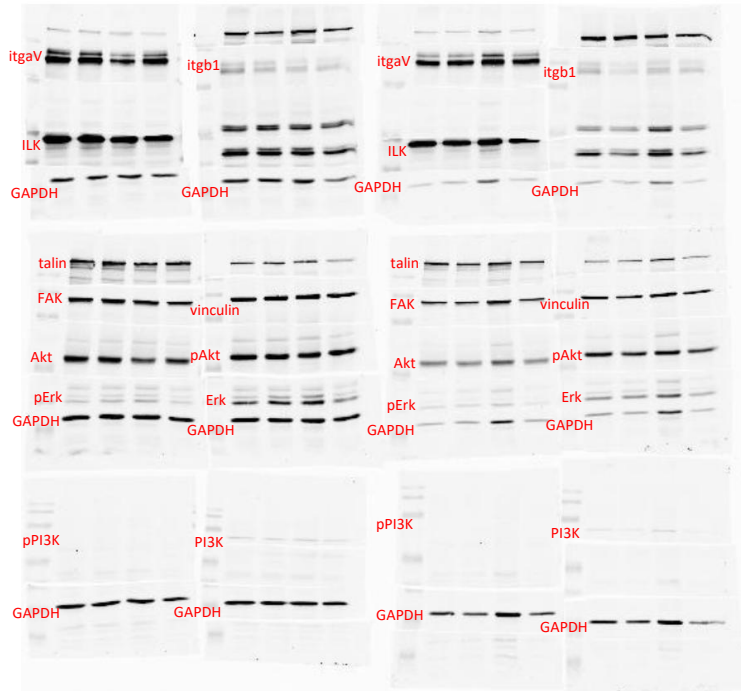


# SNU-475 replicate 7 and 8 (230224)

Figure 3 – figure supplement 1C

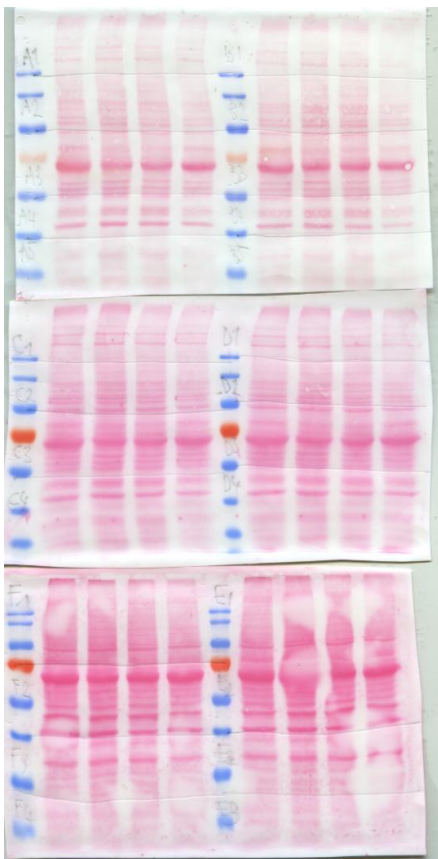


**One channel (800) Odyssey**

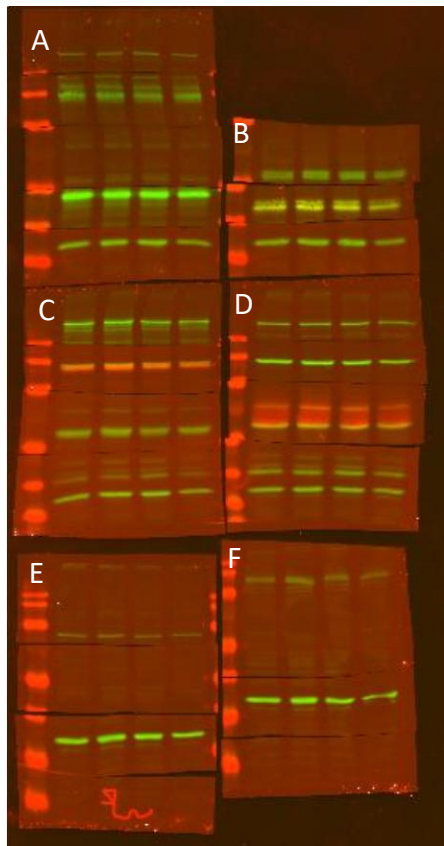


# SNU-475 replicate 9 (230305)

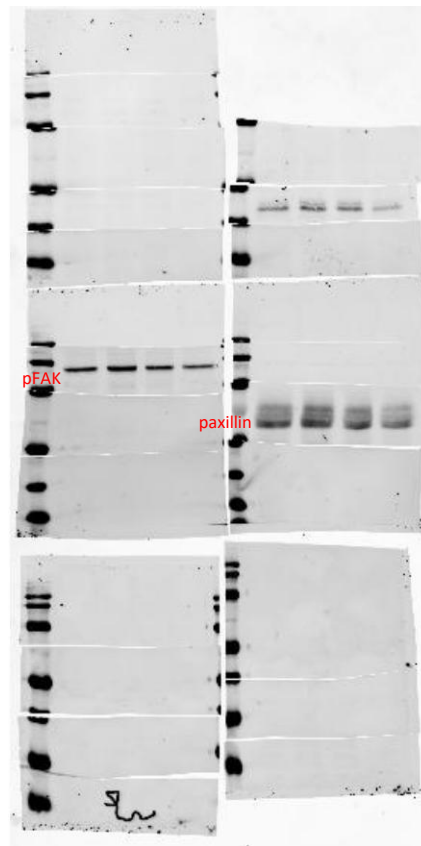
Ponceau



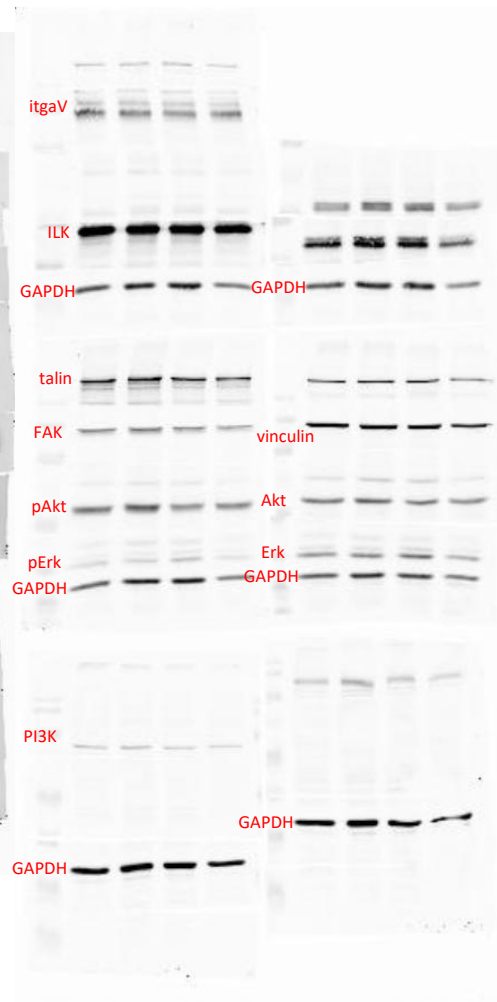
Raw merged Odyssey



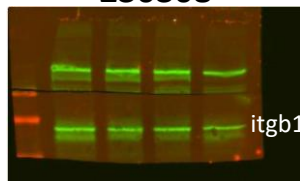
One channel (700) Odyssey



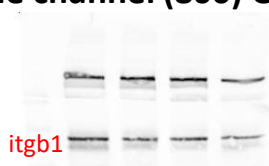
One channel (800) Odyssey



230308



One channel (800) Odyssey



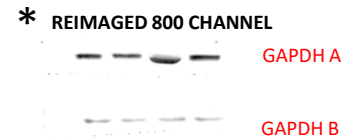
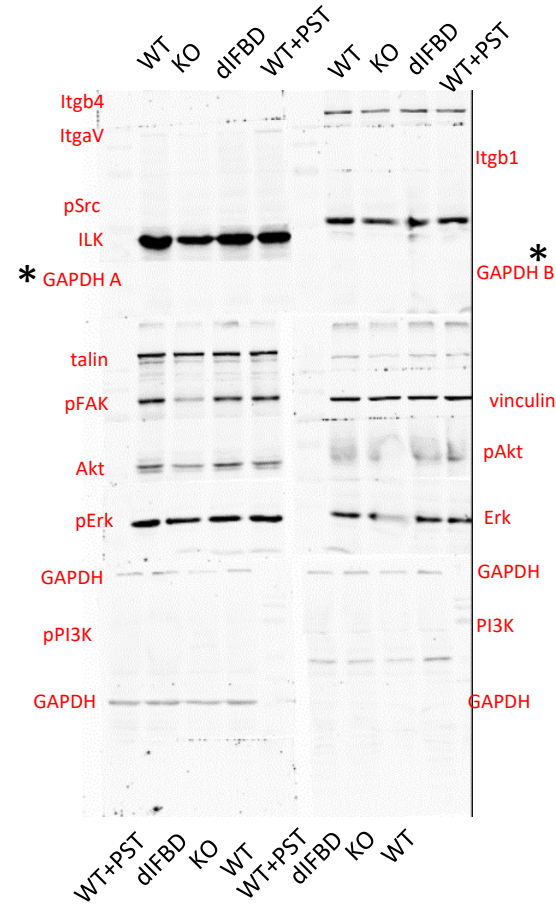
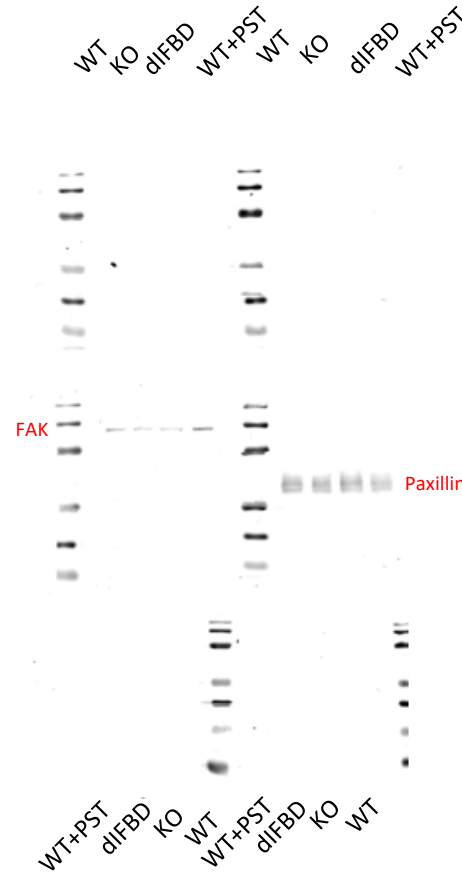
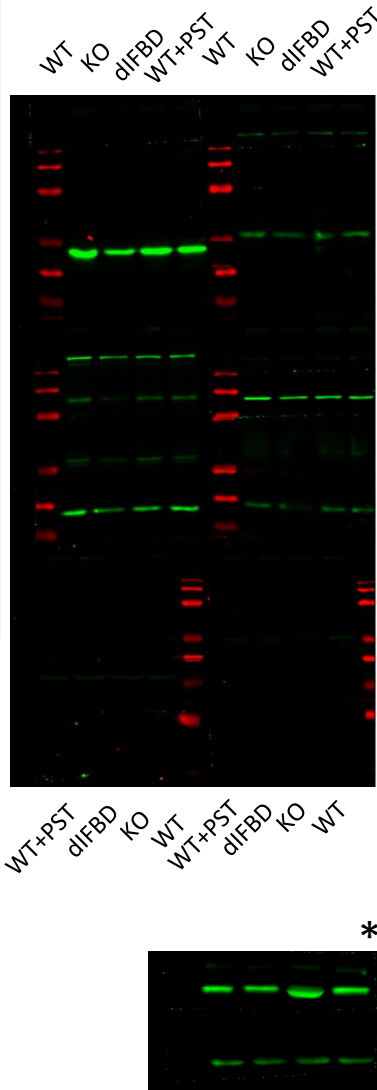
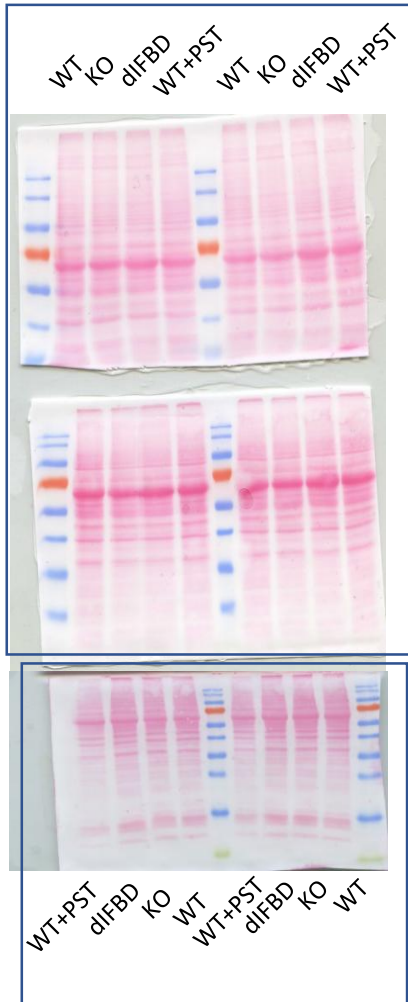
# Huh7 replicate 2 (230113)

Ponceau

Raw merged Odyssey

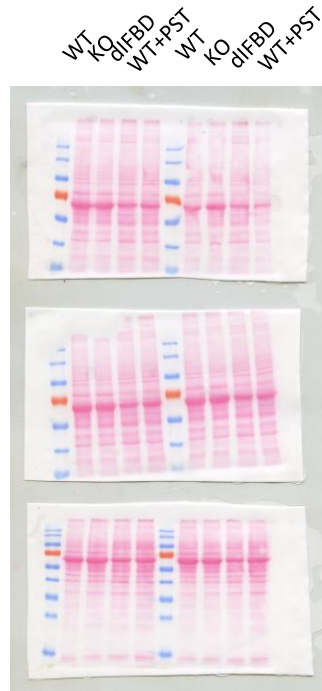
One channel (700) Odyssey

One channel (800) Odyssey

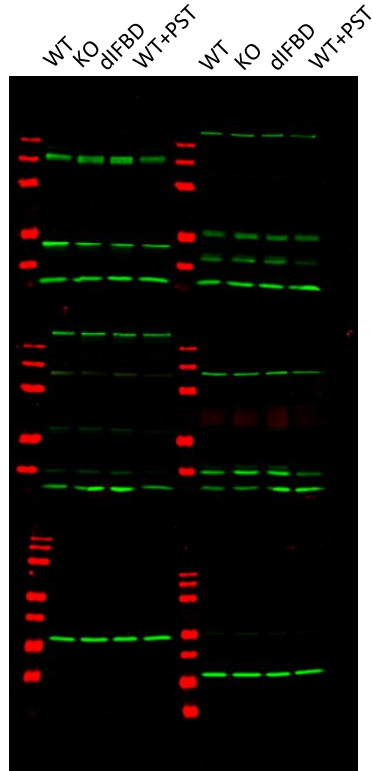


# Huh7 replicate 3 (230117)

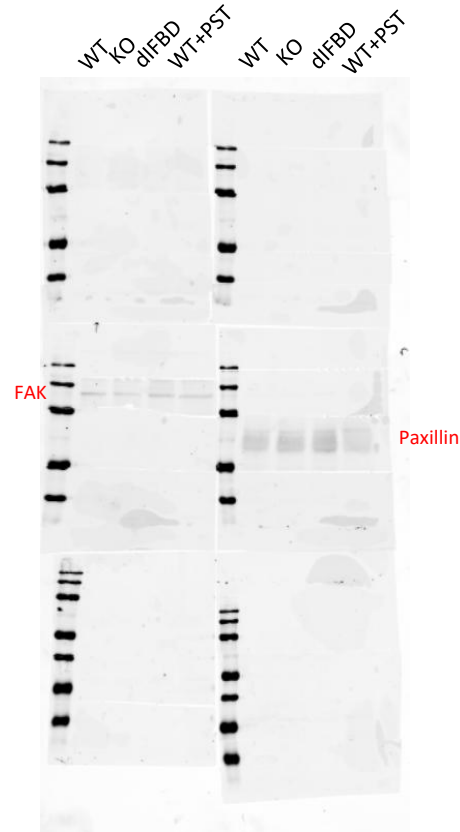
Ponceau



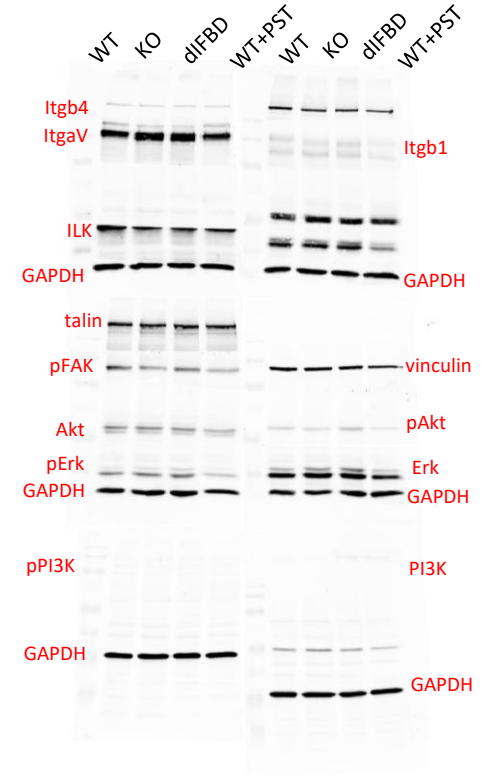
Raw merged Odyssey



One channel (700) Odyssey

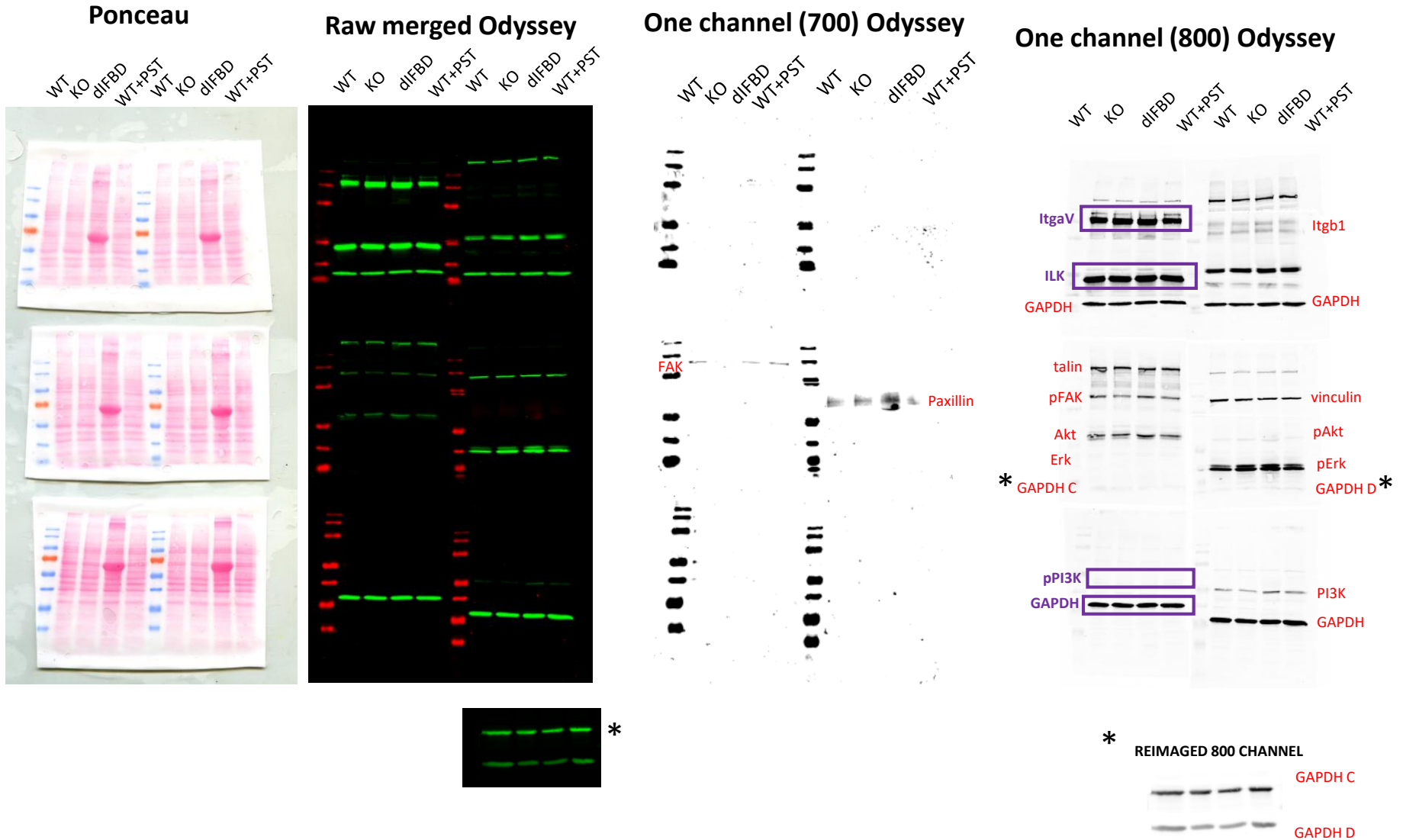


One channel (800) Odyssey







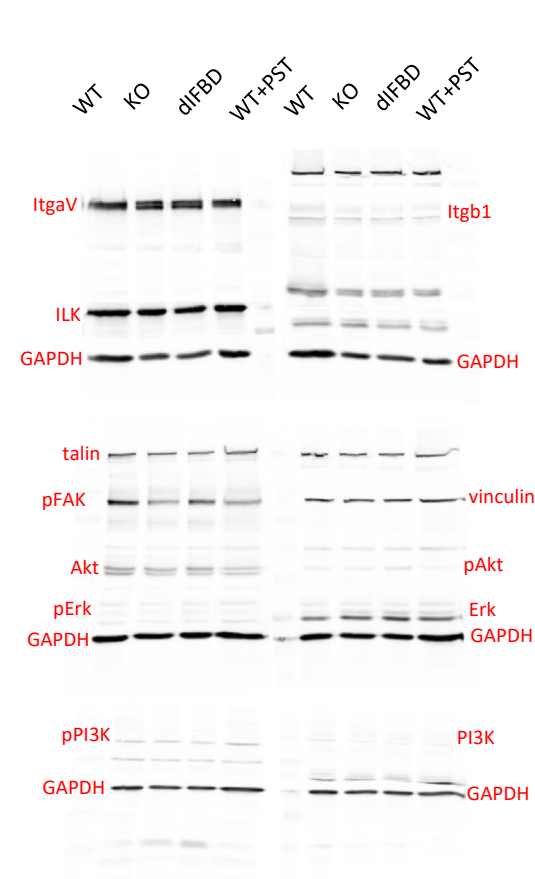
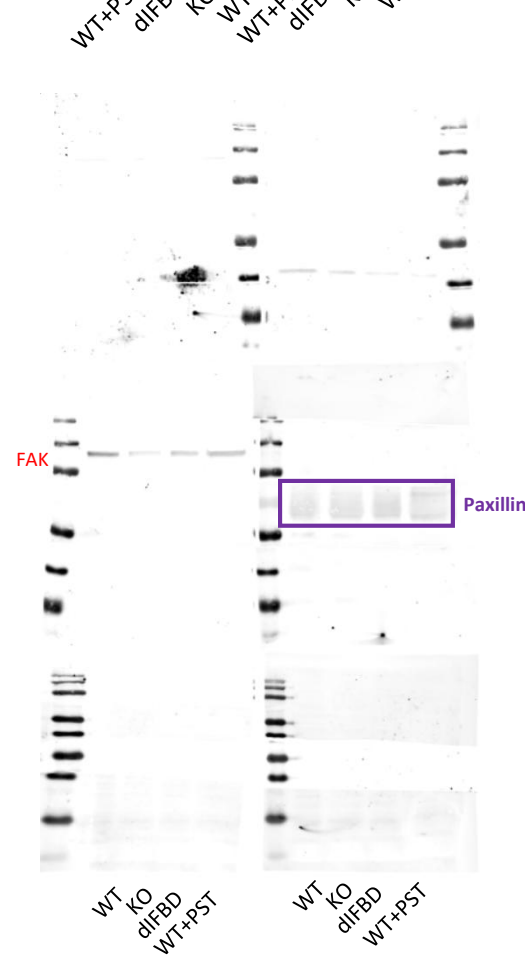
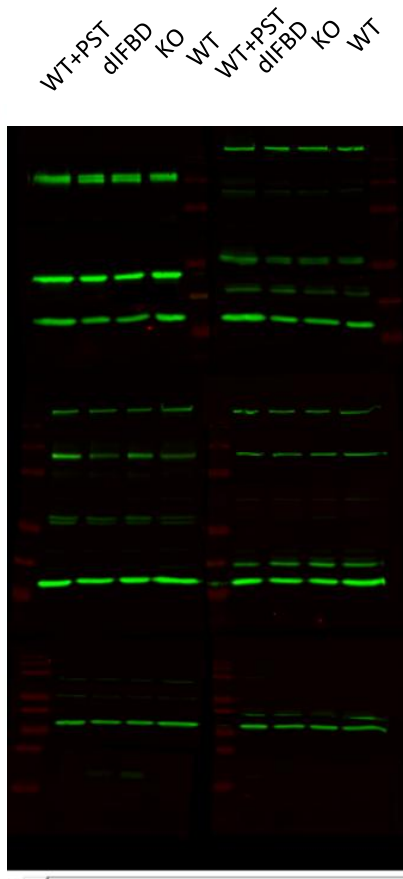


## Ponceau

## Raw merged Odyssey

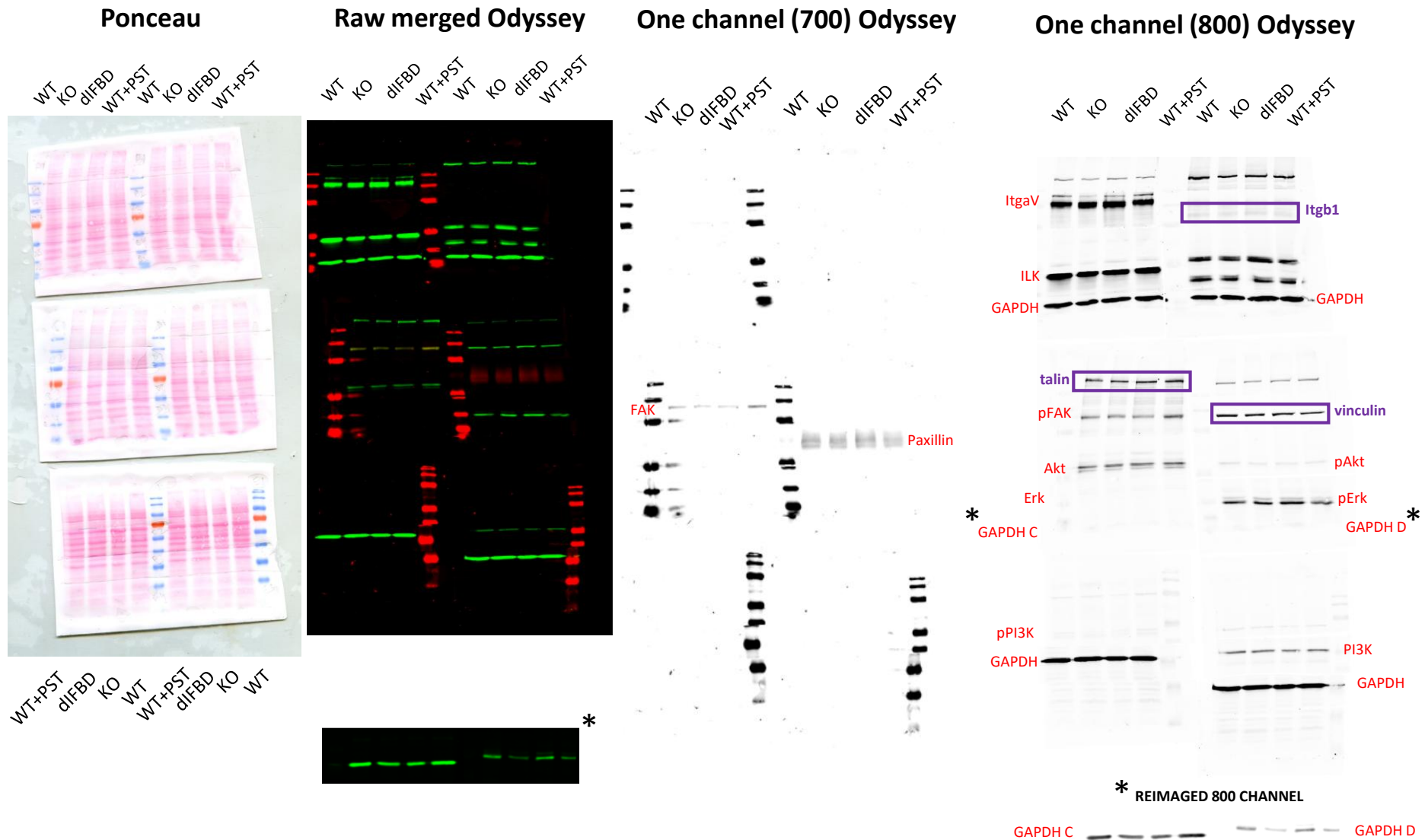
## One channel (700) Odyssey

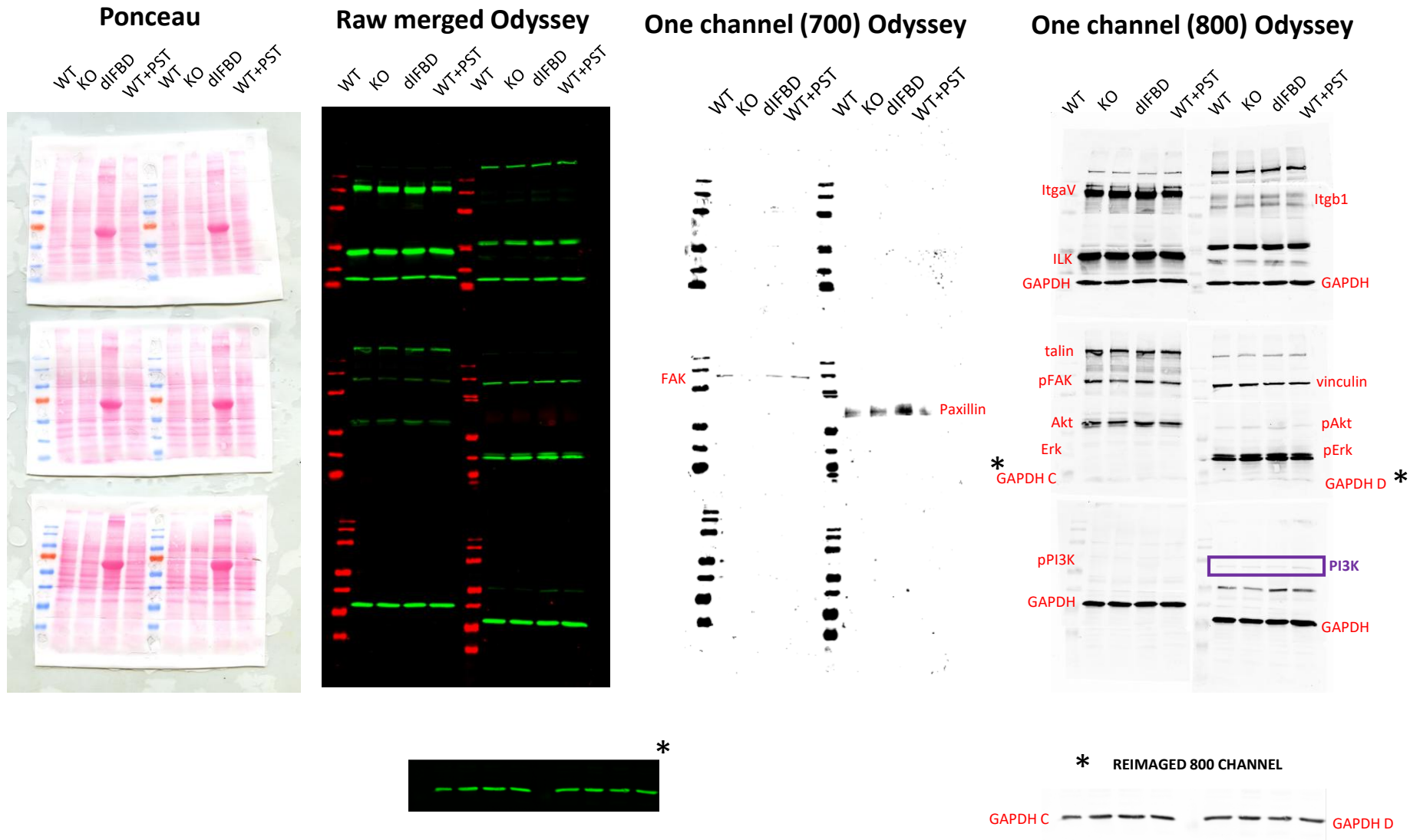
## One channel (800) Odyssey



# Huh7 replicate 7 (230325)

Figure 3 – figure supplement 1C



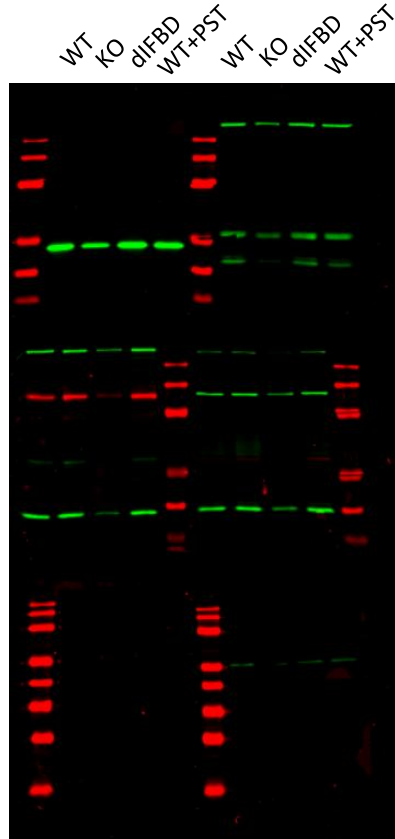


# Huh7 replicate 9 (230331)

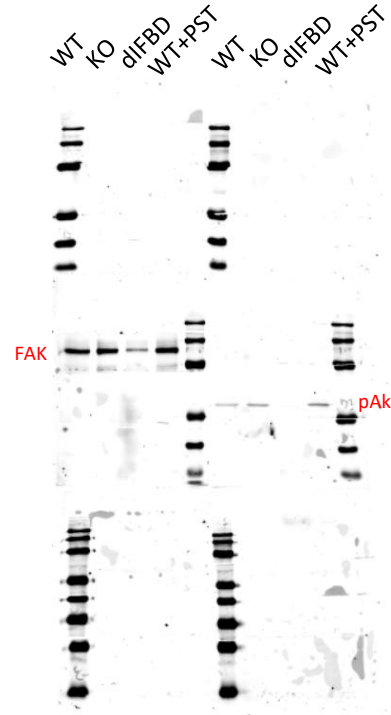
**Ponceau**



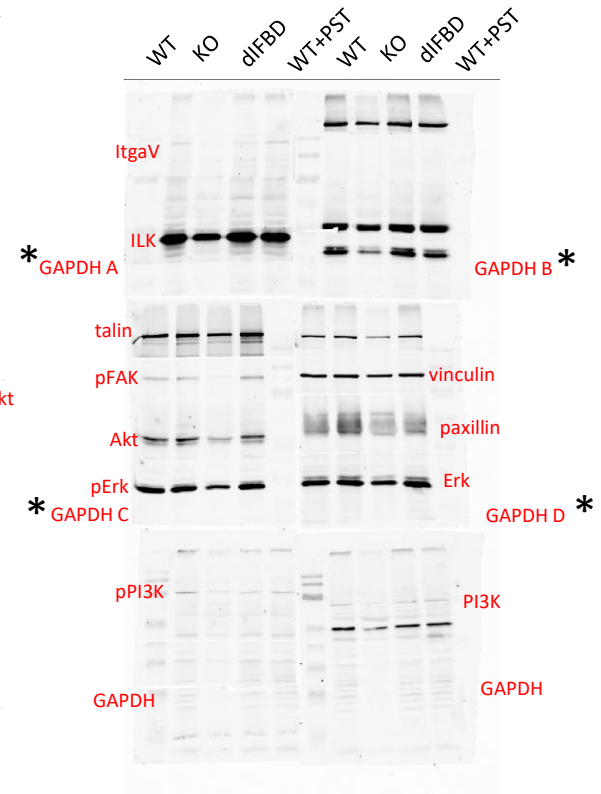
**Raw merged Odyssey**



**One channel (700) Odyssey**



**One channel (800) Odyssey**



**\* reimaged GAPDH**

