

Figure 4S2 – source data
 Uncropped gel electrophoresis corresponding to Figure 4S2B – PCR detection limit of the BFP amplicon in a serial dilution of *Rosa26-BFP::Flk1-GFP* mES gDNA into human leukemia cell line K562 gDNA; total 100ng DNA per lane.

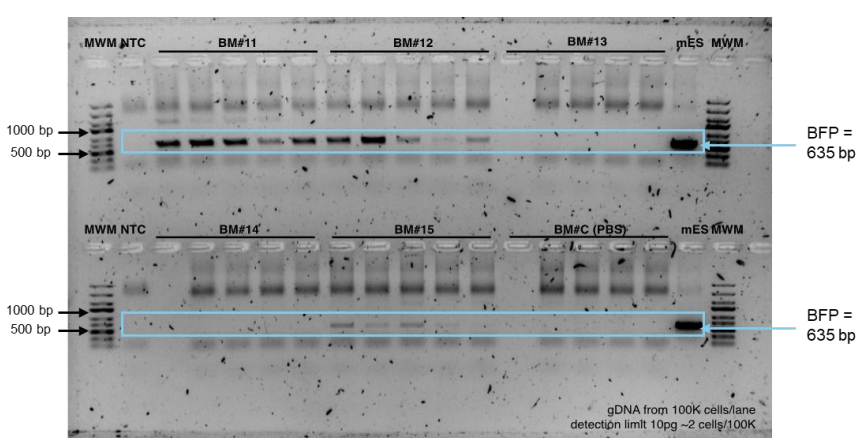


Figure 4S2 – source data
 Uncropped gel electrophoresis corresponding to Figure 4S2C – top : bone marrow (BM); bottom : spleen (Spl). MWM : molecular weight marker. PCR detection of haemGx genomic (g)DNA in the bone marrow (BM) and spleen (Spl) of immunodeficient mice 4 weeks after unilateral adrenal implantation of 3 gastruloids/gland. Analysis of 5 replicates of 100ng gDNA/recipient tissue; control animal was injected unilaterally with PBS in an adrenal gland in parallel with experimental implantation. Reaction positive control used 100ng of gDNA from *Rosa26-BFP::Flk1-GFP* mES cells (mES) used to generate haemGxs. NTC: no template control.

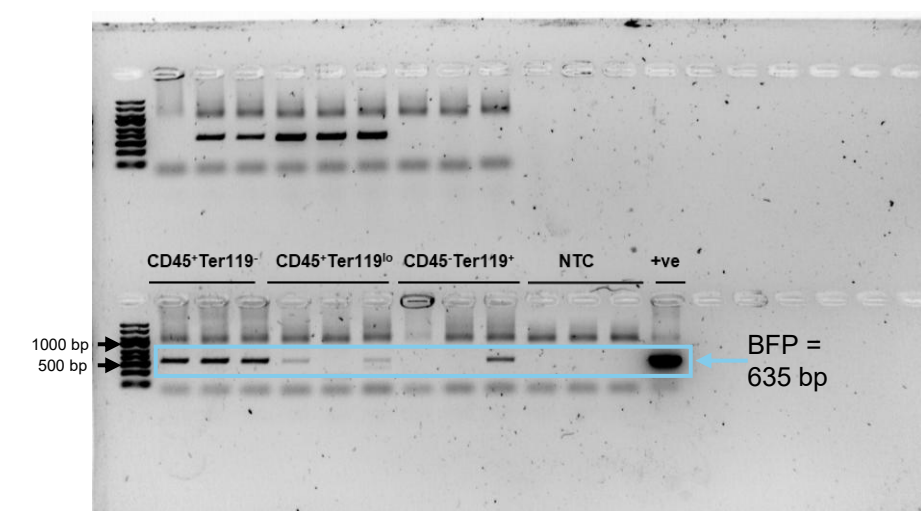
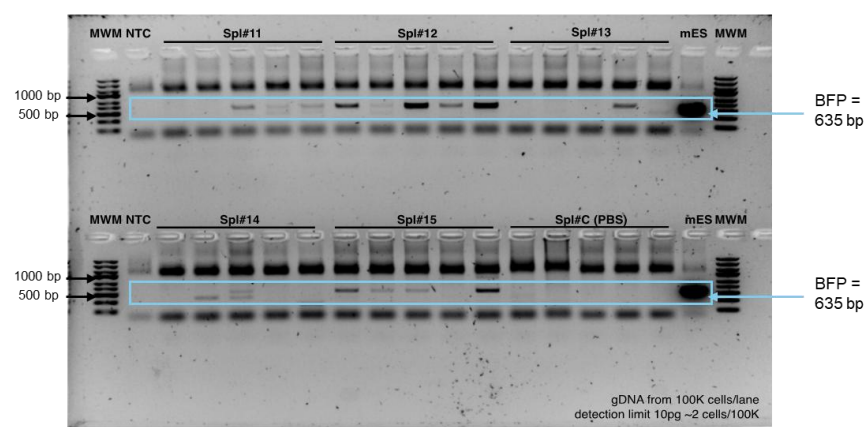


Figure 4S2 – source data
 Uncropped gel electrophoresis corresponding to Figure 4S2E (bottom) – PCR analysis of *Rosa26-BFP::Flk1-GFP* gDNA in the cell fractions of implanted animal #15 at 4 weeks post-implantation. PCR run in triplicate material from each sample.

top: not shown; PCR repeat of animal #15.