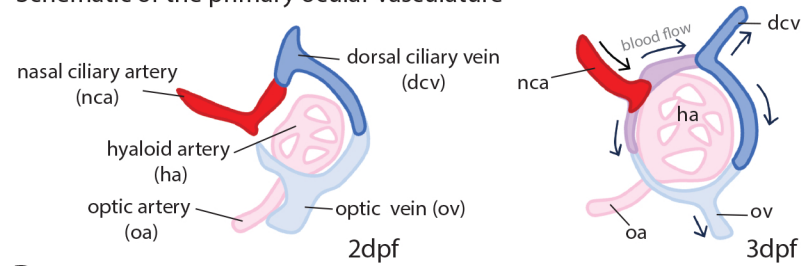
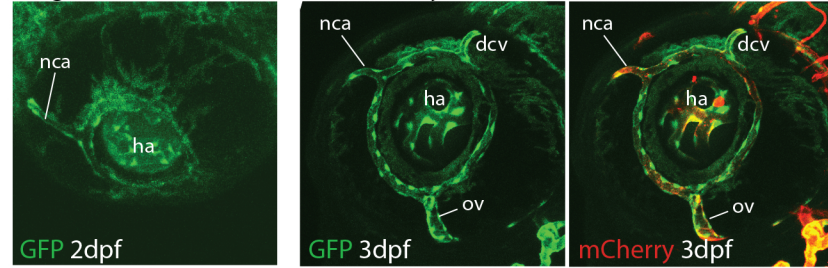
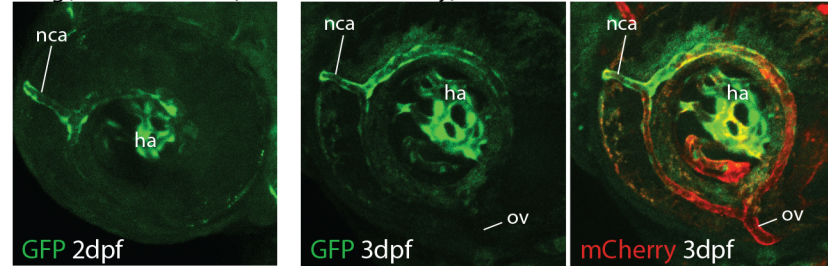
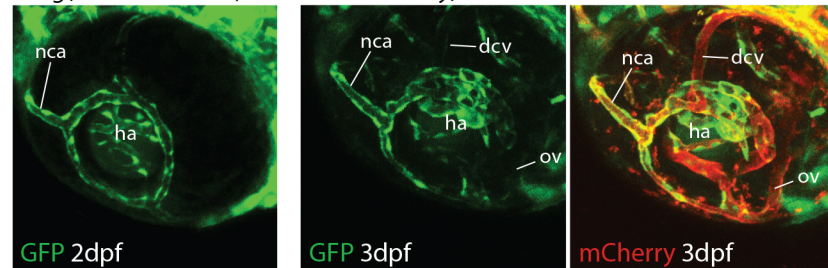
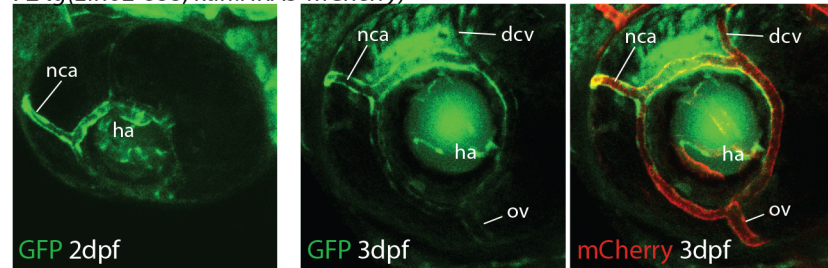
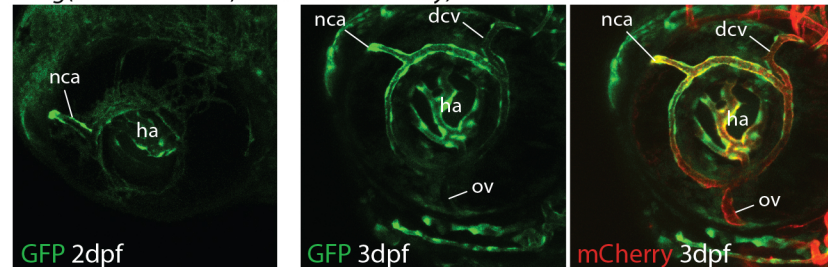
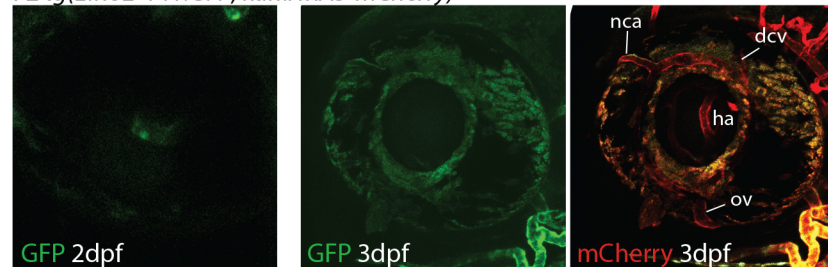
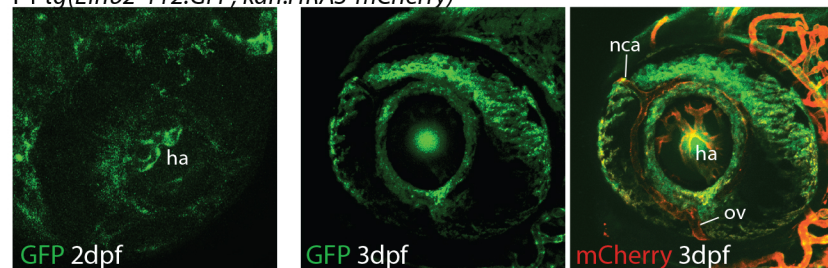
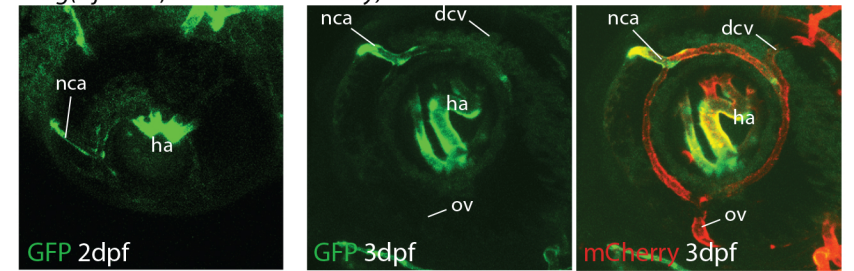
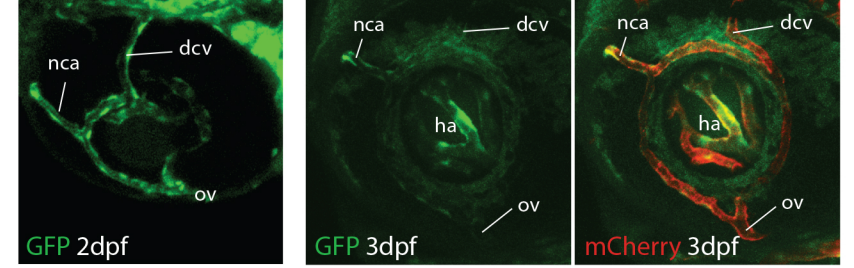
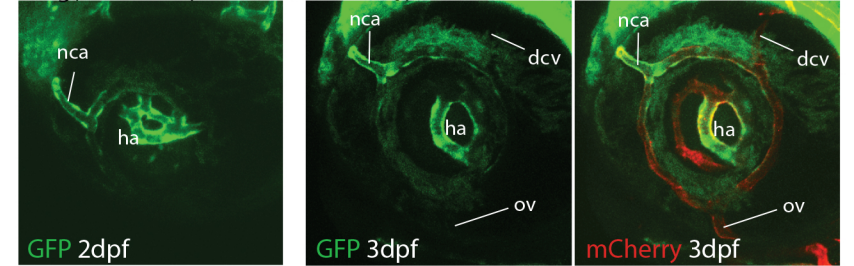
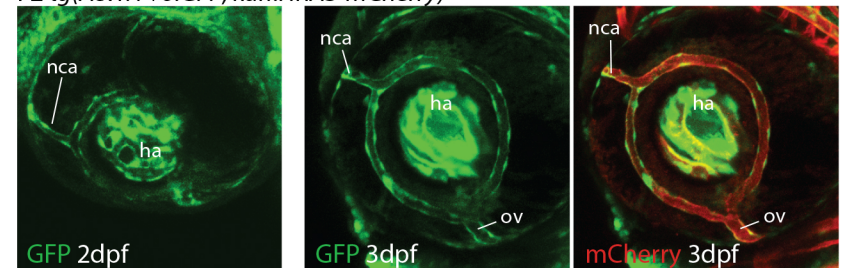
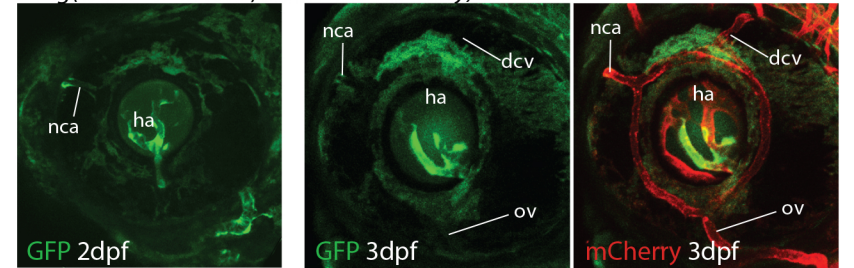
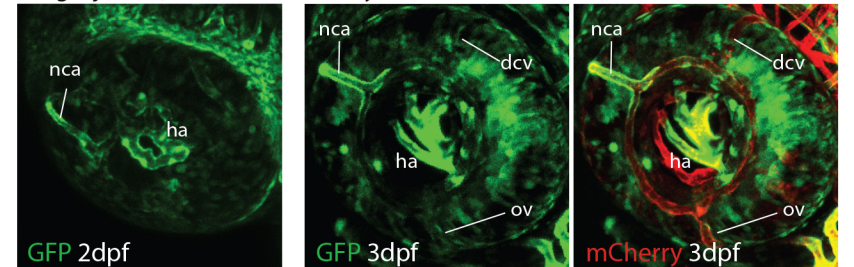
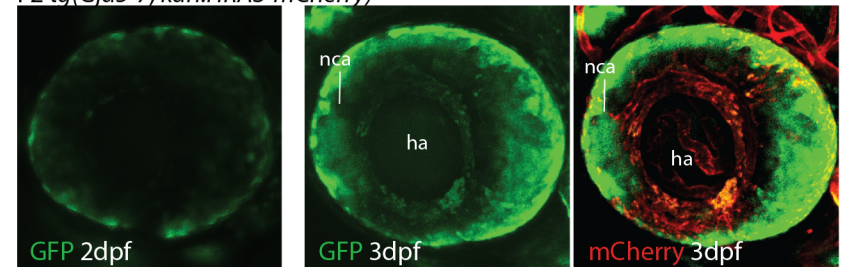


Figure 3 - figure supplement 1**A**

Schematic of the primary ocular vasculature

**B**F1 *tg(Cxcr4-194:GFP; kdrl:HRAS-mCherry)*F2 *tg(Cxcr4+135:GFP; kdrl:HRAS-mCherry)*F2 *tg(Cxcr4+151:GFP; kdrl:HRAS-mCherry)*F2 *tg(Efnb2-333; kdrl:HRAS-mCherry)*F1 *tg(Efnb2-159:GFP; kdrl:HRAS-mCherry)*F2 *tg(Efnb2-141:GFP; kdrl:HRAS-mCherry)*F1 *tg(Efnb2-112:GFP; kdrl:HRAS-mCherry)***B continued**F2 *tg(Gja4-50; kdrl:HRAS-mCherry)*F2 *tg(Unc5b+30; kdrl:HRAS-mCherry)*F2 *tg(Unc5b+39; kdrl:HRAS-mCherry)*F2 *tg(Acvrl1+6:GFP; kdrl:HRAS-mCherry)*F1 *tg(Cxcl12+269:GFP; kdrl:HRAS-mCherry)*F2 *tg(Gja5-78; kdrl:HRAS-mCherry)*F2 *tg(Gja5-7; kdrl:HRAS-mCherry)*F1 *tg(Nrp1+78; kdrl:HRAS-mCherry)*