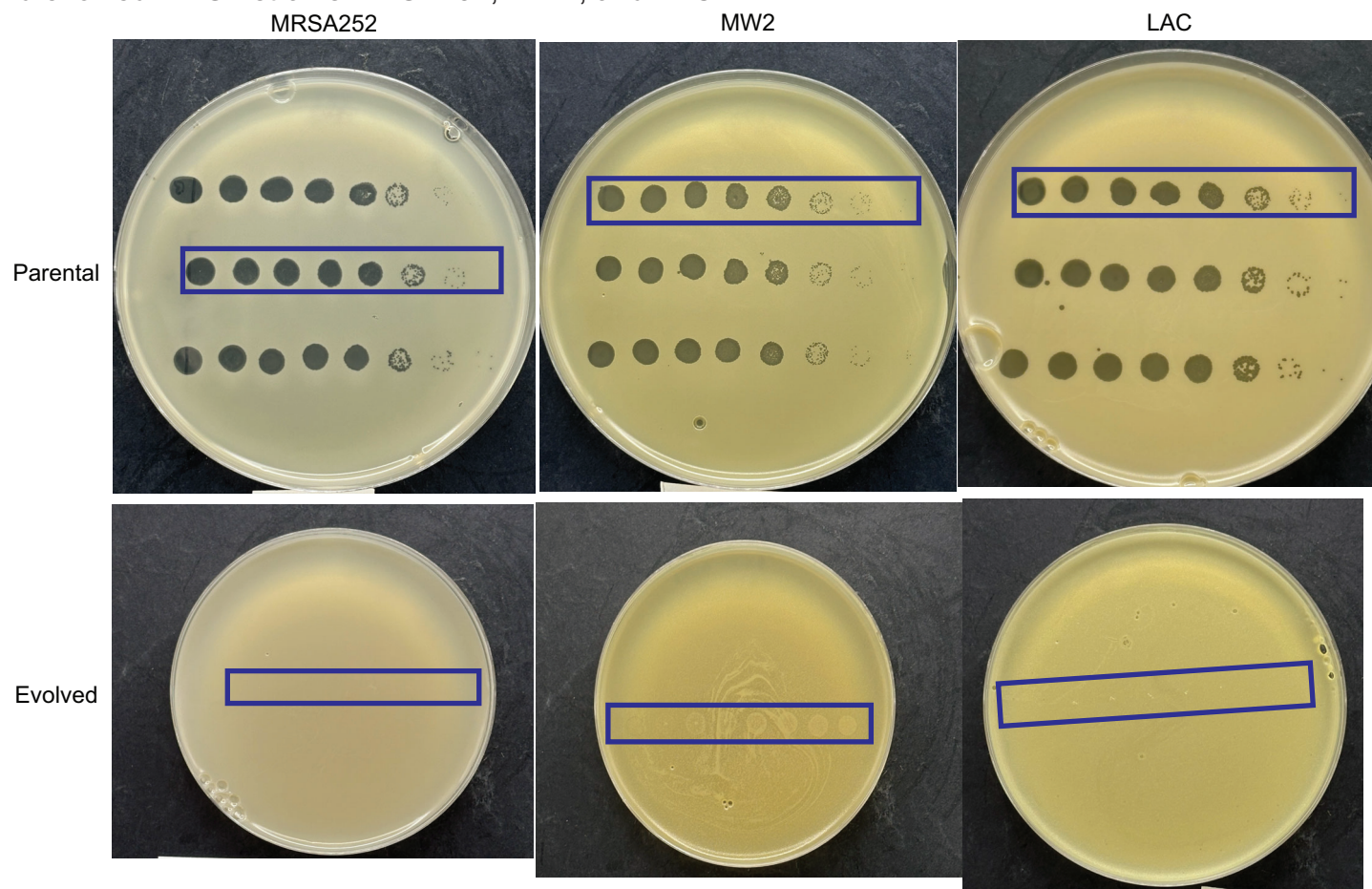


Figure 2-figure supplement 4-Source Data 1:

For Figure 2-figure supplement 4A: raw plaquing images of bacteriophage SATA8505 against parental and evolved MRSA strains MRSA252, MW2, and LAC.



For Figure 2-figure supplement 4B: Uncropped images of parental and SATA8505-evolved MRSA strains exposed to oxacillin strips.

