

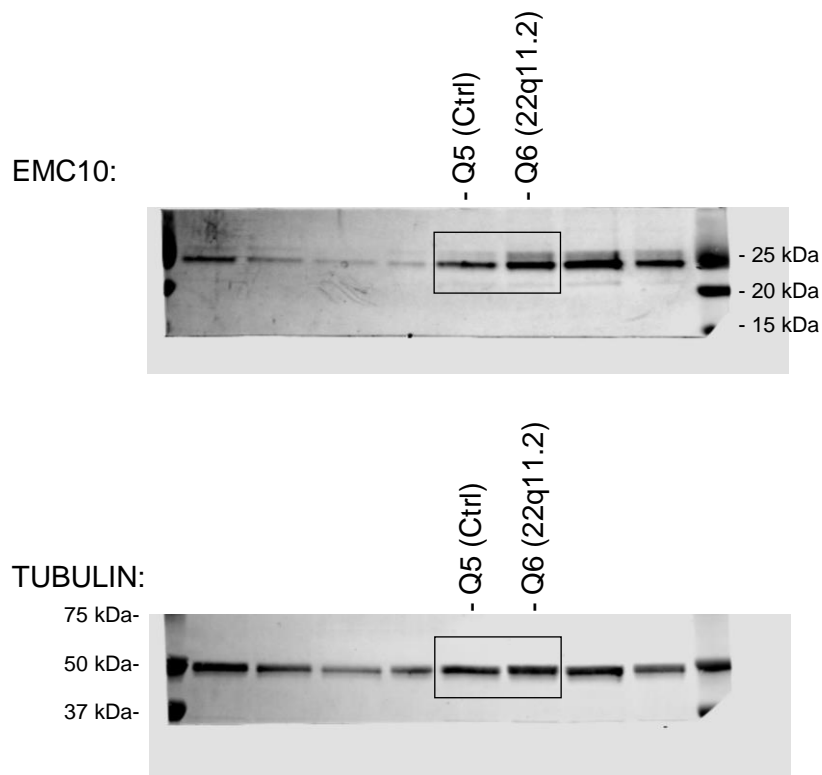
G

Figure 1-source data 1. Original membranes corresponding to Figure 1G, with relevant bands and loading controls indicated. Boxed samples are shown in Figure 1 panel G. For all membranes the Precision Plus Protein Dual Color Standards (Bio-Rad, Hercules, CA, USA) molecular weight marker was used. Western blot analysis showing upregulated EMC10 protein levels in Q6 (22q11.2) line derived cortical neurons at day 8 of differentiation. Tubulin was probed as a loading control.