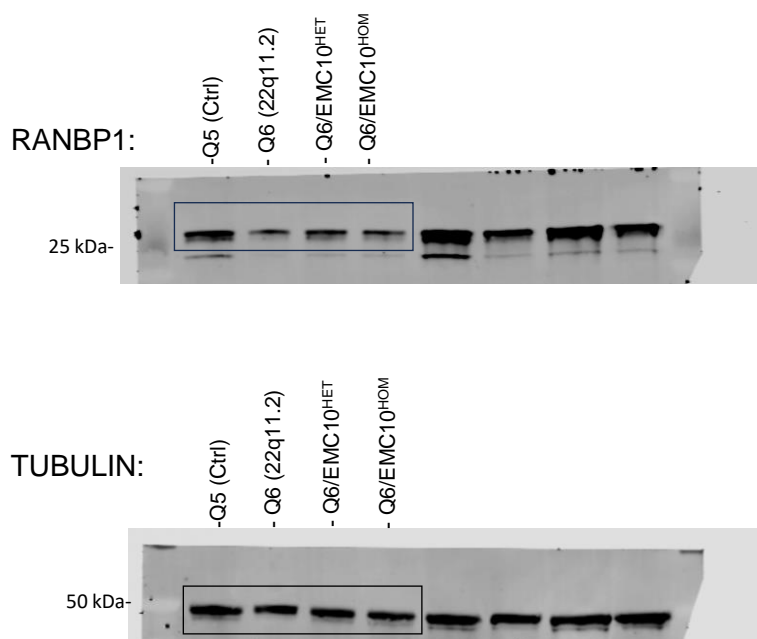
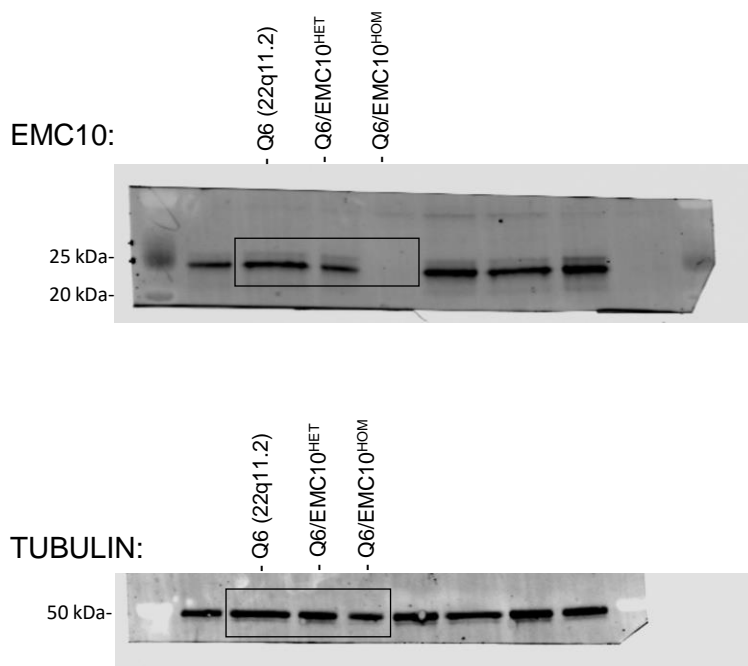


**C****G**

**Figure 3-figure supplement 1-source data 1.** Original membranes corresponding to Figure 3-figure supplement 1C and G, with relevant bands and loading controls indicated. Boxed samples are shown in Figure 3-figure supplement panels 1C and G. For all membranes the Precision Plus Protein Dual Color Standards (Bio-Rad, Hercules, CA, USA) molecular weight marker was used. **(C)** Western blot analysis confirmed reduction of RANBP1 protein levels in Q6, Q6/EMC10<sup>HET</sup> and Q6/EMC10<sup>HOM</sup> lines. **(G)** Western blot analysis showing reduction (Q6/EMC10<sup>HET</sup>) or elimination (Q6/EMC10<sup>HOM</sup>) of EMC10 protein levels in the *EMC10* LoF mutant hiPSC lines. Tubulin was probed as a loading control.