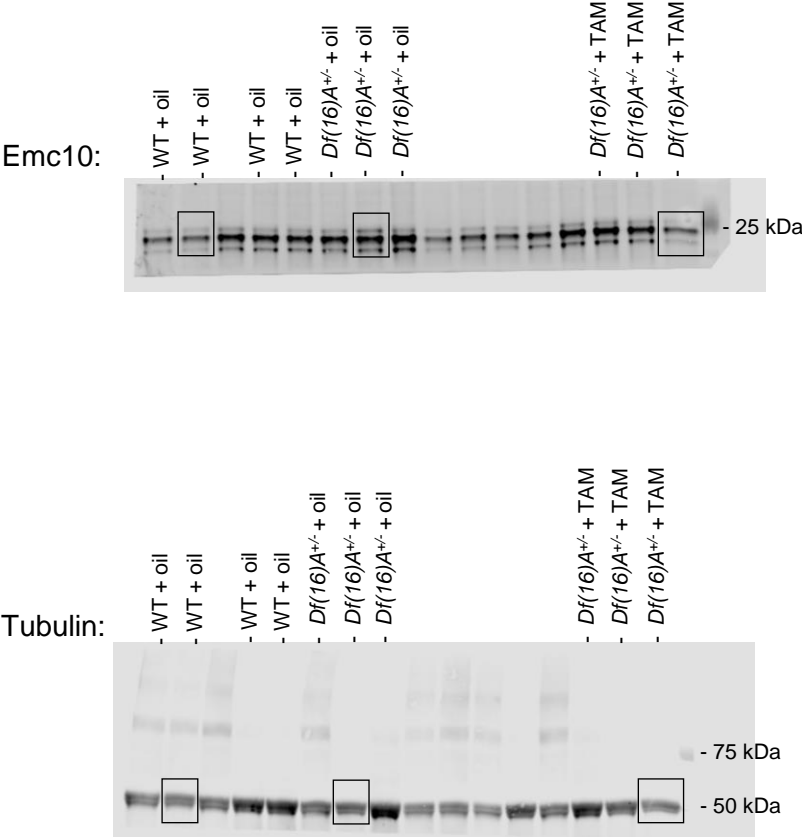


C



**Figure 4-figure supplement 2-source data 1.** Original membranes corresponding to Figure 4-figure supplement 2C, with relevant bands and loading controls indicated that were used for quantification. Boxed samples are shown in Figure 4-figure supplement 2 panel C (right). For all membranes the Precision Plus Protein Dual Color Standards (Bio-Rad, Hercules, CA, USA) molecular weight marker was used. Emc10 protein levels in PFC of WT and *Df(16)A<sup>+/-</sup>* mice following adult TAM treatment are shown. Emc10 protein level is reduced in TAM-treated *Df(16)A<sup>+/-</sup>* compared to corn oil-treated *Df(16)A<sup>+/-</sup>* mice. Tubulin was used as loading control.