

**E**

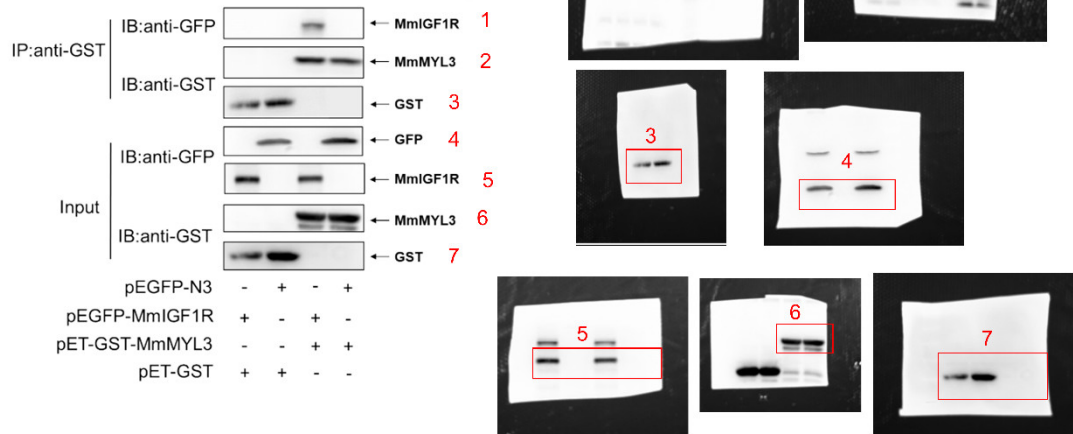


Figure 6, Source Data 3. Original membranes corresponding to Figure 6E. The red box marked as 1 represents the MmIGF1R of the IP group. The red box marked as 2 represents the MmMYL3 of the IP group. The red box marked as 3 represents the GST of the IP group. The red box marked as 4 represents the GFP of the input group. The red box marked as 5 represents the MmIGF1R of the input group. The red box marked as 6 represents the MmMYL3 of the input group. The red box marked as 7 represents the GST of the input group.