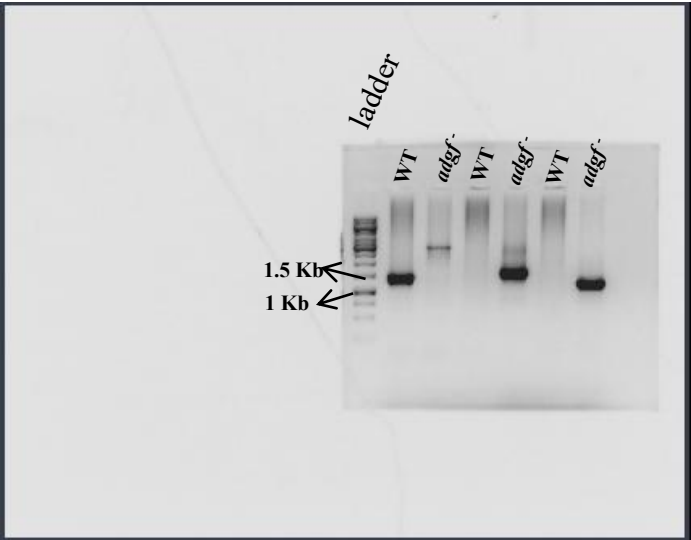
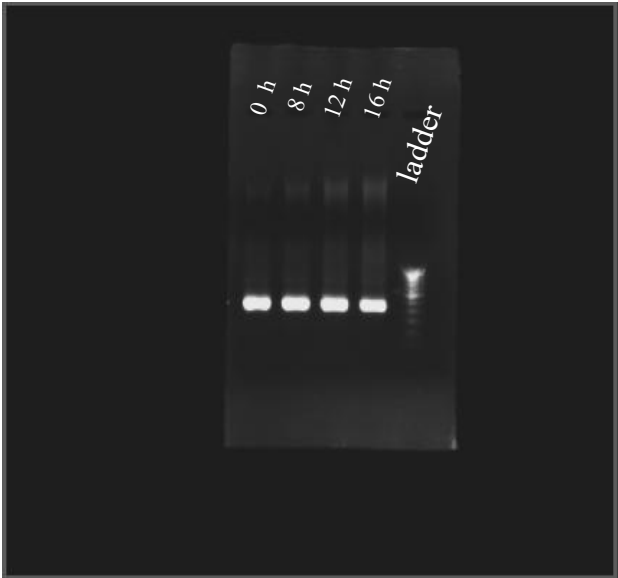


Figure 1-Source data 2_Gel image with labelled bands

Mutant validation



rnIA expression



adgf expression



Original gels corresponding to Figure 1, panels B and C. Thermo Fisher ladders were used. The lower gel shows *adgf* expression in the *adgf*⁻ mutant at 0 h, 8 h, 12 h, and 16 h (lanes 1–4), followed by samples from 20 h and 24 h (lanes 5–6), and a positive control (not included in the figure).