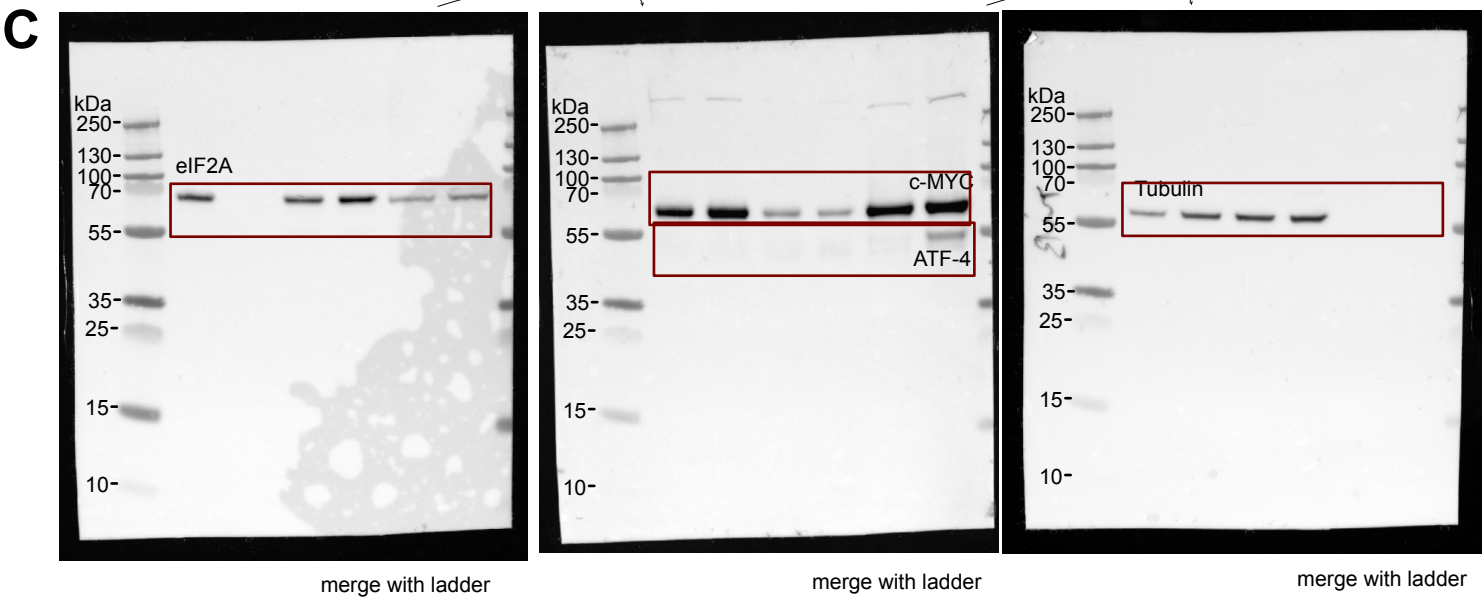


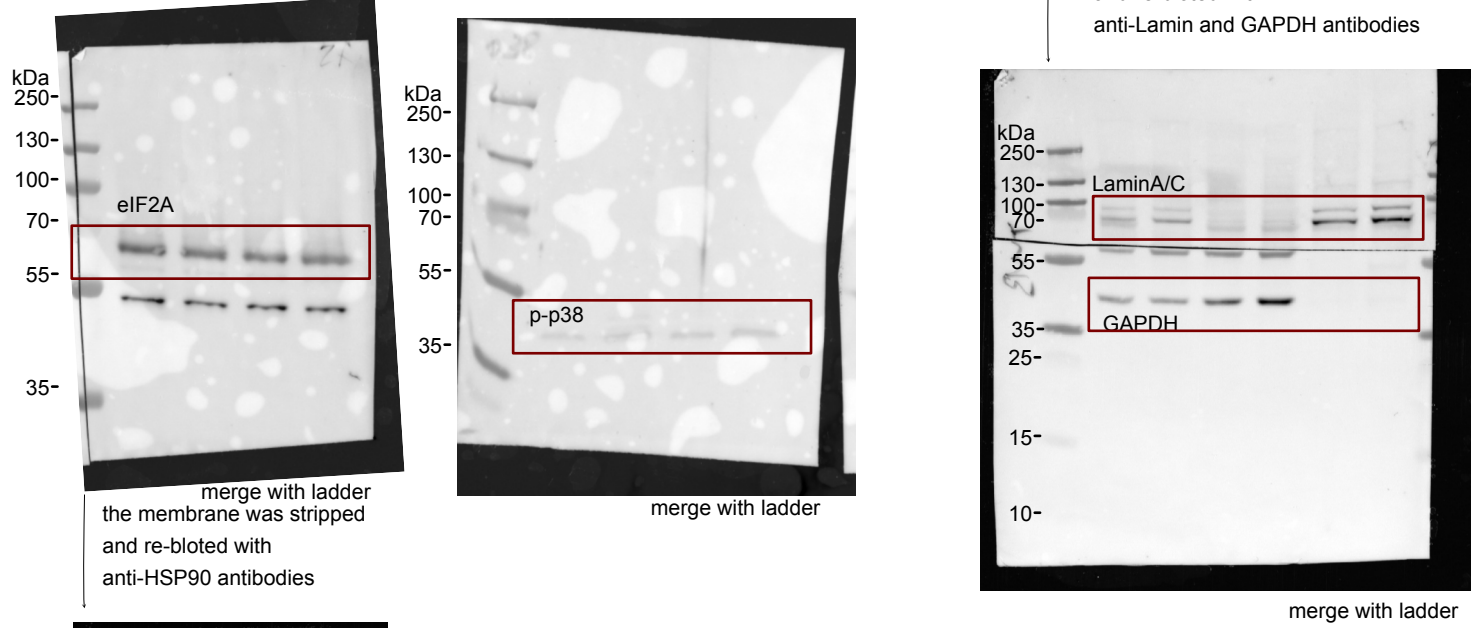
Fig1 Suppl. Figure 1

the membrane was stripped  
and re-blotted with anti-CMYC  
and ATF-4 antibodies

the membrane was stripped  
and re-blotted with  
anti-tubulin antibodies



**F** same samples were run in a parallel:



the membrane was stripped cut  
and re-blotted with  
anti-Lamin and GAPDH antibodies

merge with ladder  
the membrane was stripped  
and re-blotted with  
anti-HSP90 antibodies

