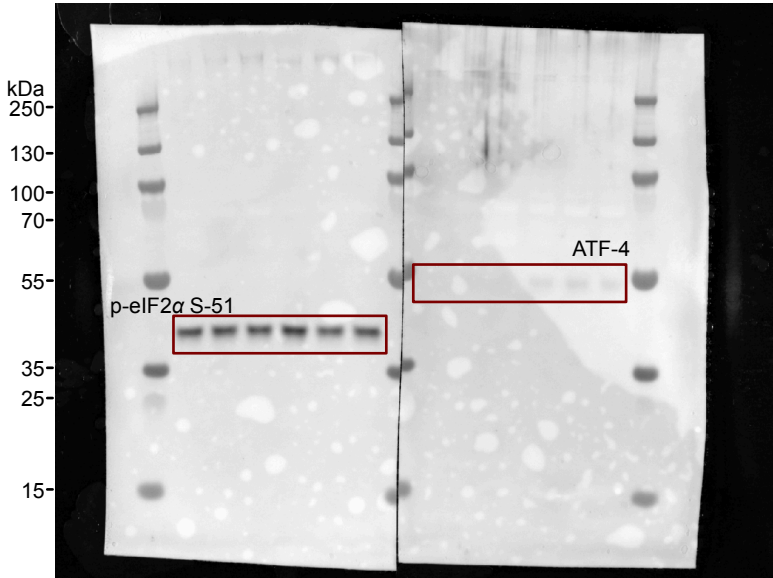


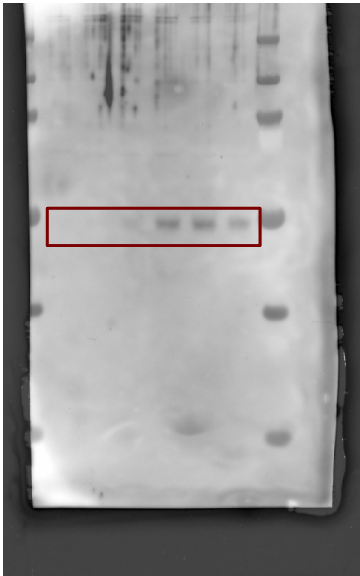
Fig.4. Suppl. Figure 1D

same samples were run in a parallel:

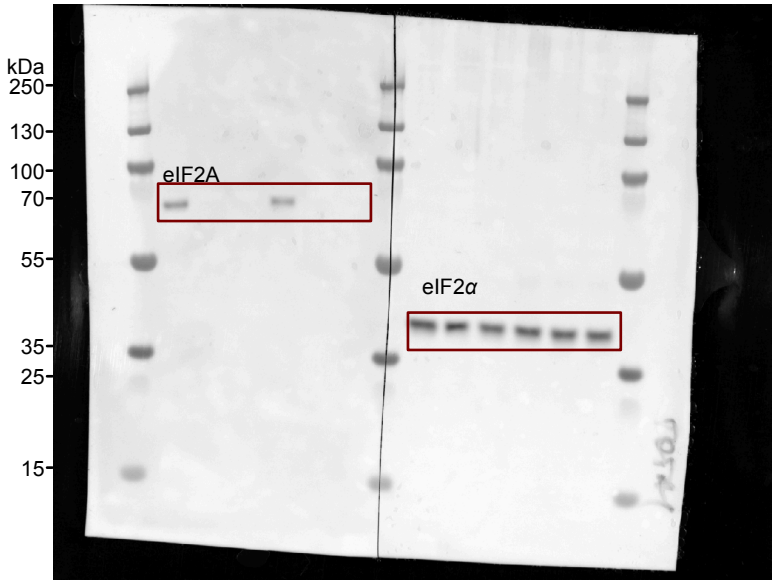
HeLa	control			eIF2A			control			eIF2A			control			eIF2A		
	CO	KO1	KO2	CO	KO1	KO2	CO	KO1	KO2	CO	KO1	KO2	CO	KO1	KO2			
TM:	-	-	-	+	+	+	-	-	-	+	+	+	-	-	-	+	+	+



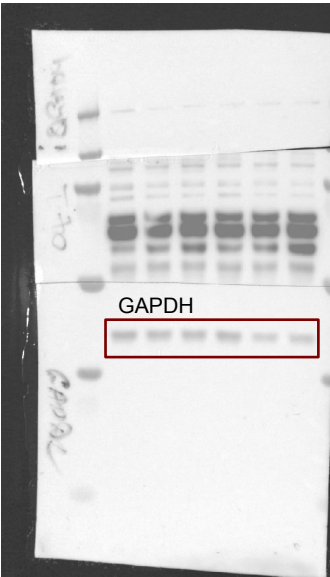
ATF-4 signal was weak
re-developed with FEMTO



merge with ladder
the membranes were stripped and re-blotted with eIF2α and eIF2A antibodies



part of left membrane was
reincubated with
GAPDH antibody



merge with ladder

merge with ladder