

Figure 3-source data 1

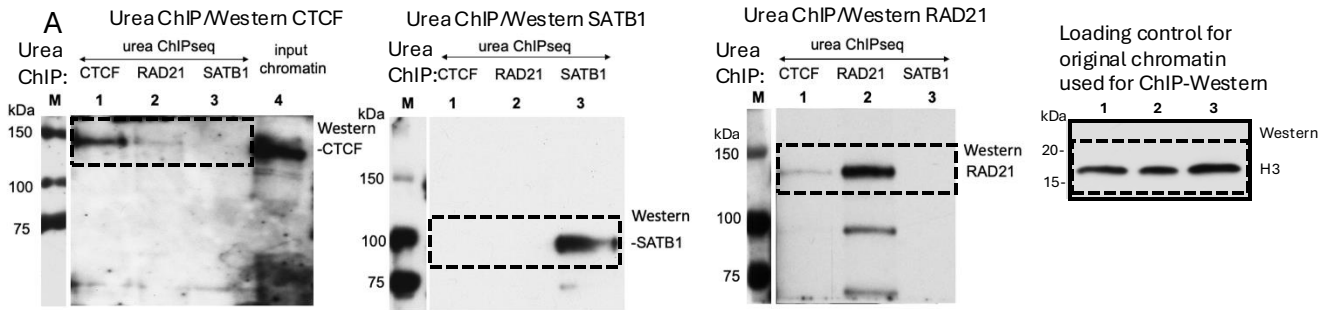


Figure 3 Source Data 1. Original membranes corresponding to Figure 3, panel C. The areas marked by dotted brackets are used for Figure 3C. Marker lanes (M) are either from the same gel or from another gel that was run in parallel in the same vertical dual gel electrophoresis chamber. Input chromatin in the leftmost panel indicates whole urea-purified chromatin before immunoprecipitation.