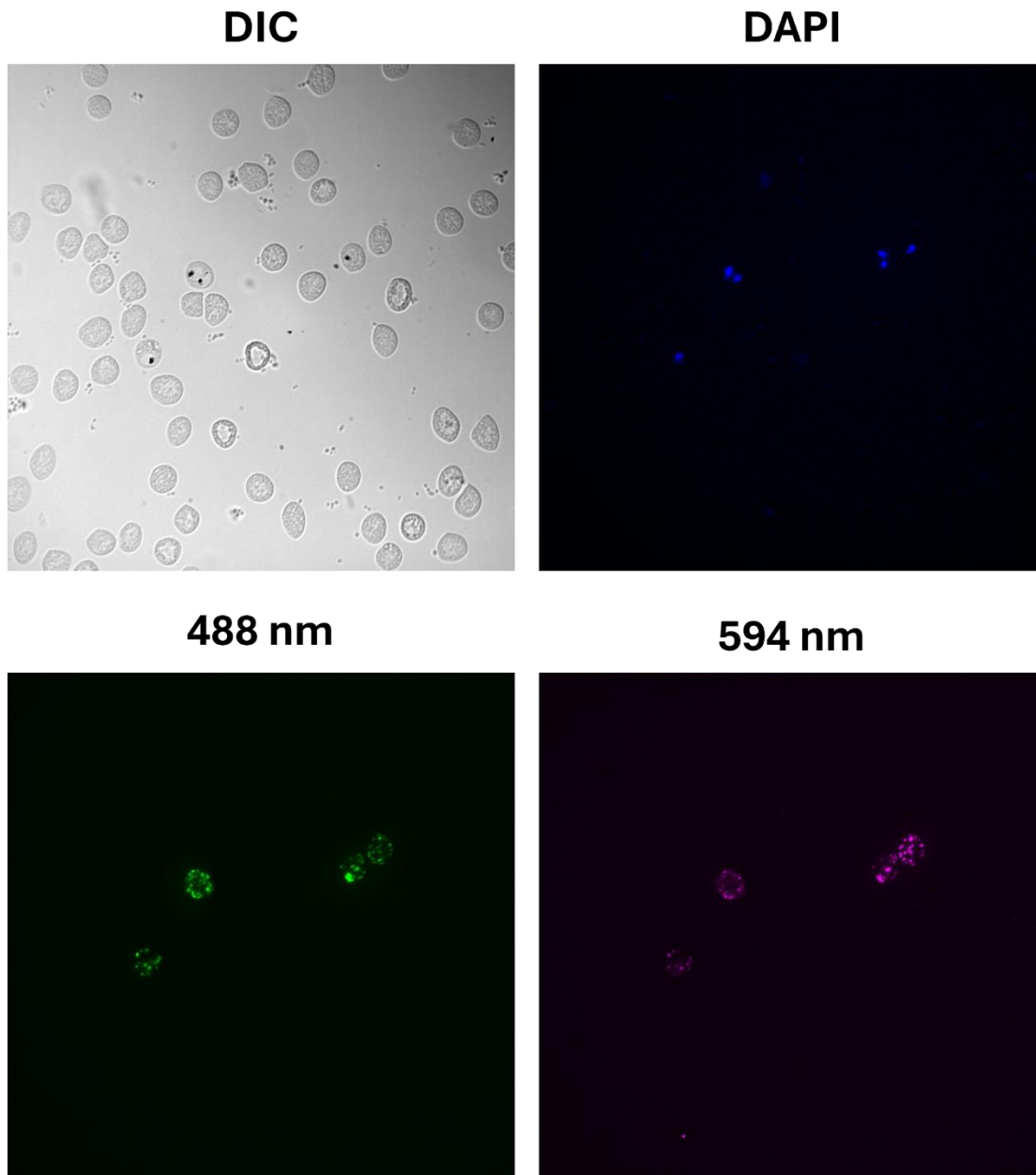
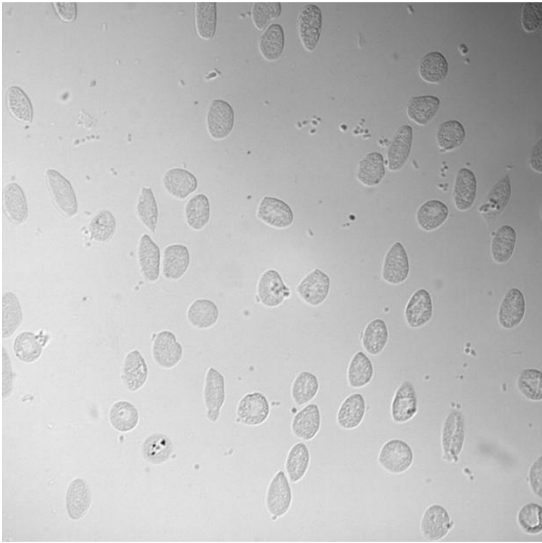


Figure 3 – Supplement 6 – Source Data 1

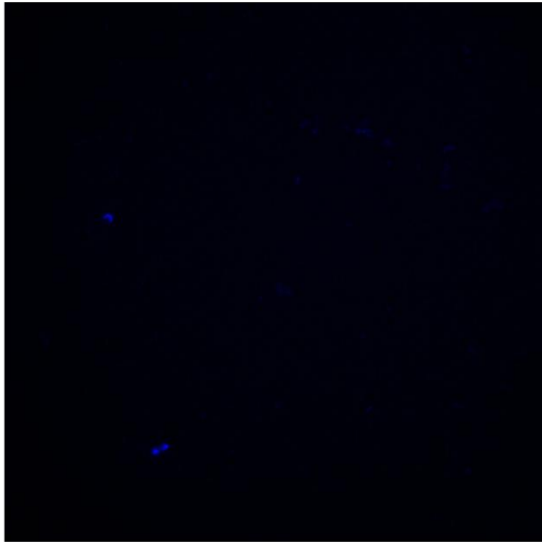
Uncropped immunofluorescence microscopy images showing PF3D7_0702500-3xHA detected with anti-HA (488 nm), SBP1 detected with anti-SBP1 (594 nm), parasite DNA stained with DAPI and the corresponding DIC images. Channels are shown separately.



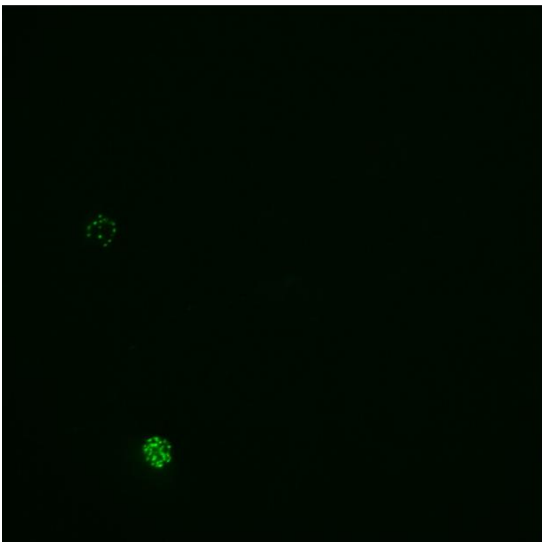
DIC



DAPI



488 nm



594 nm

