

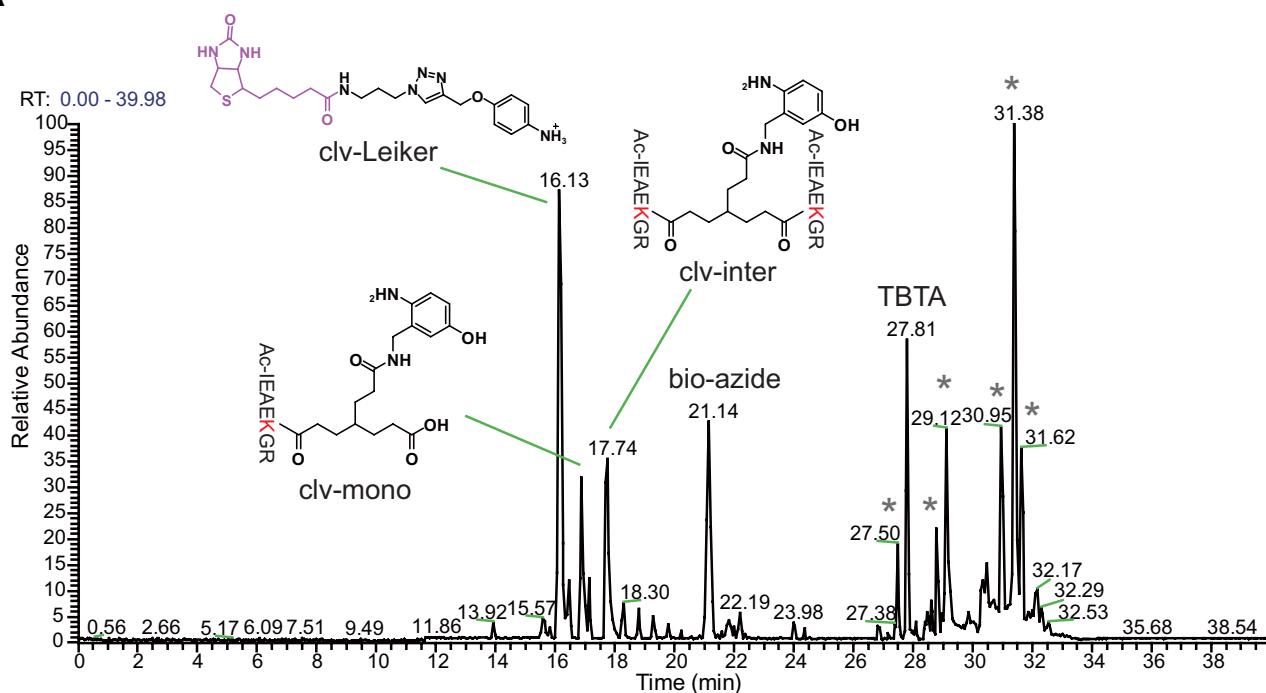
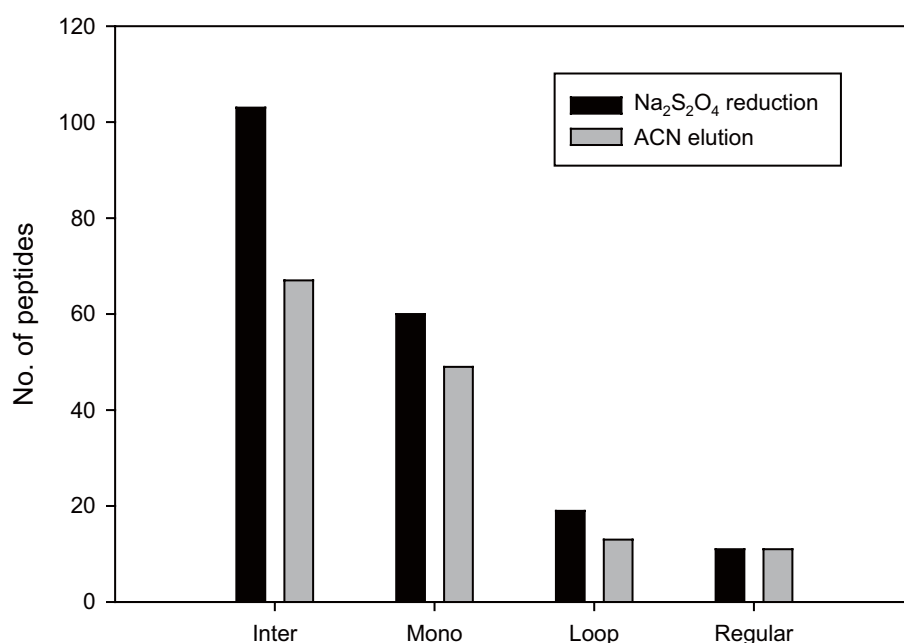
A**B**

Figure 1—figure supplement 2. Evaluation of azobenzene-based chemical cleavage. (A) Complete cleavage of biotinylated AL-linked peptides. Ac-IR7, a model peptide with an acetylated N-terminus (Vellucci et al., 2010) was cross-linked using AL, and then subjected to click chemistry followed by azobenzene cleavage. Asterisks indicate non-peptide contaminants. (B) Azobenzene-based chemical cleavage is more efficient than acetonitrile elution using BSA as the test sample.