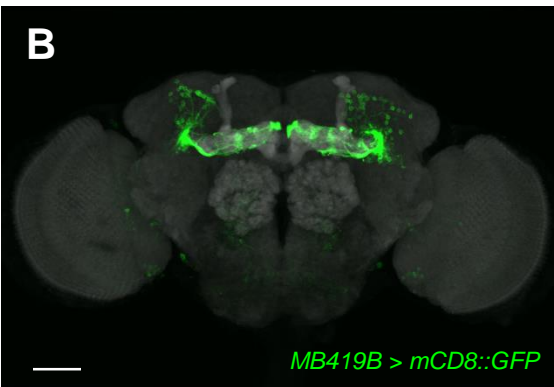


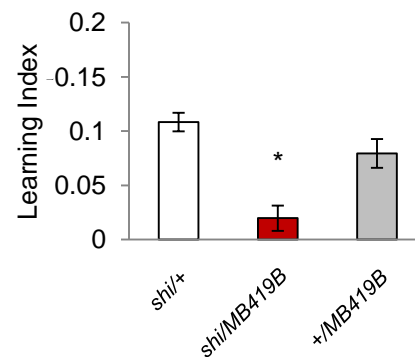
A

Significance compared to the shi/+ control	Split-GAL4	p65ADZp DNA fragment	ZpGdbd DNA fragment	KC yd	KC ymain	KC α'/β' ap	KC α'/β' m	KC α/β p	KC α/β s	KC α/β c
**	MB010B	R13F02	R52H09							
**	MB364B	R13F02	R21B06							
**	MB419B	R26E07	R39A11							
**	MB152B	R19B03	R26E07							
**	MB009B	R13F02	R45H04							
n.s.	MB417B	R26E07	R29G11							
n.s.	MB008B	R13F02	R44E04							
n.s.	MB185B	R52H09	R18F09							
n.s.	MB131B	R13F02	R89B01	†						
n.s.	MB371B	R13F02	R85D07							
n.s.	MB477B	R44E04	R26E07							
n.s.	MB418B	R26E07	R30F02							
n.s.	MB005B	R13F02	R34A03							
n.s.	MB461B	R35B12	R26E07							
n.s.	MB370B	R13F02	R41C07							



C

Visual conditioning



D

Olfactory conditioning

