

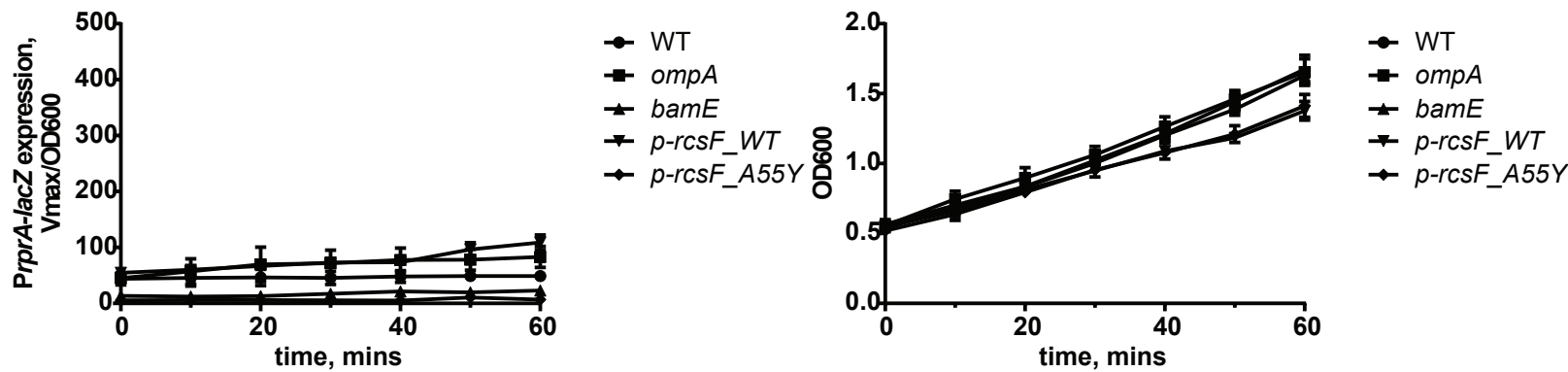
A

PMB MIC in LB at different cell densities, mean +/- SD, n=3

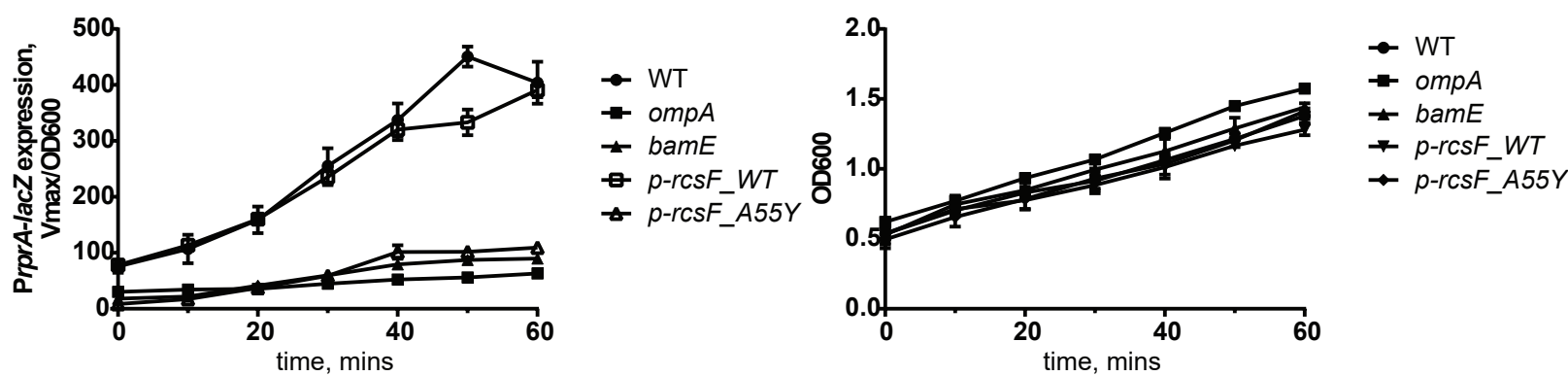
5*10 ⁸ cell/ml (used in all of the experiments)			10 ⁵ cell/ml (standard)		
WT	ompA	bamE	WT	ompA	bamE
10+/- 0	10+/- 0	10+/- 0	0.42+/- 0.18	0.52+/- 0.18	0.42+/- 0.18

B

untreated



PMB treatment



Glb treatment

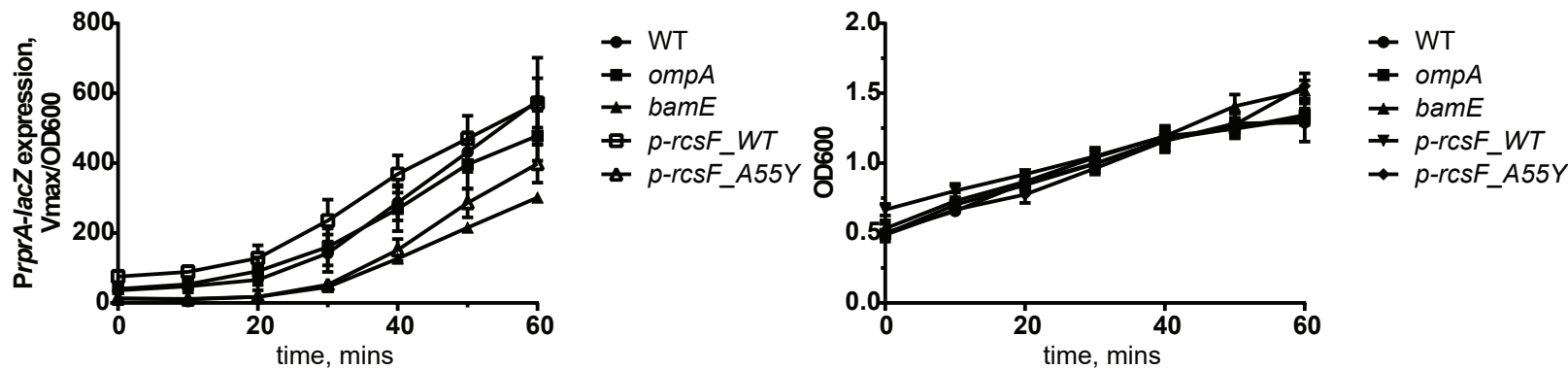


Figure 3- Figure supplement 1