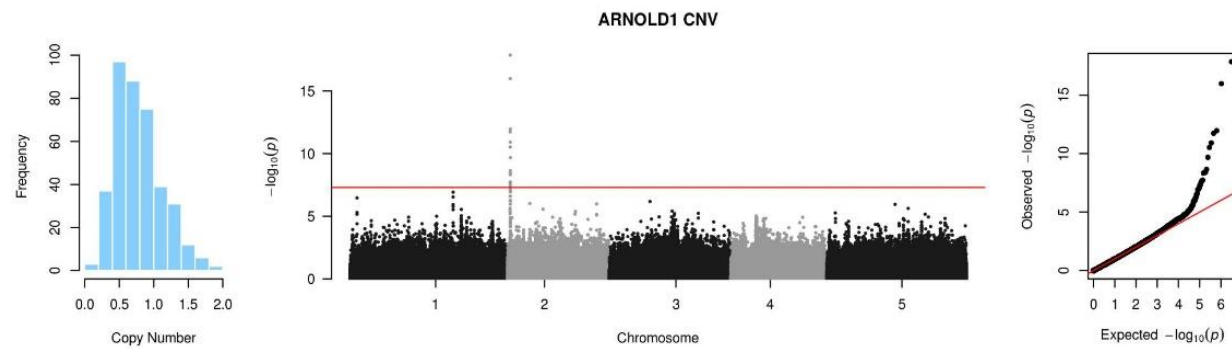
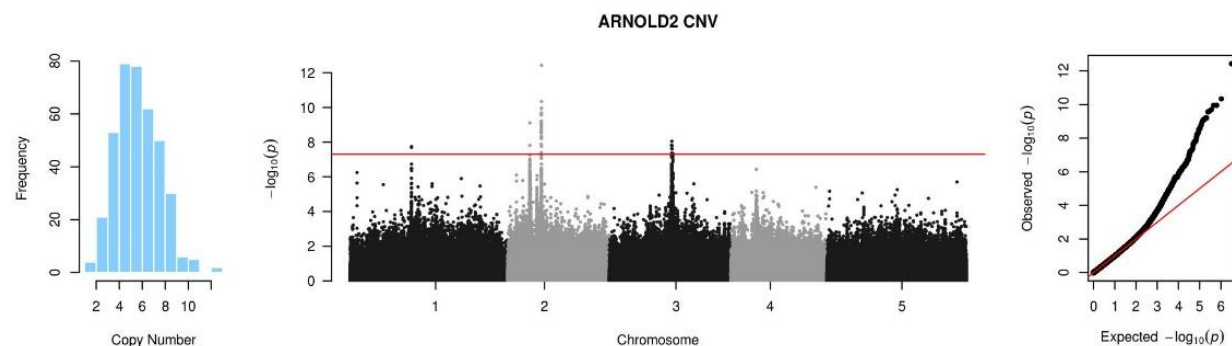


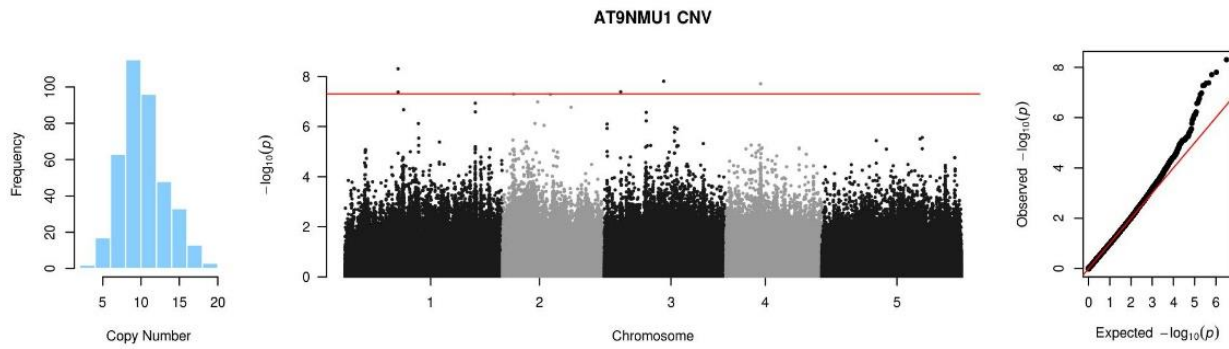
Supplementary file 1. GWAS results for CNV



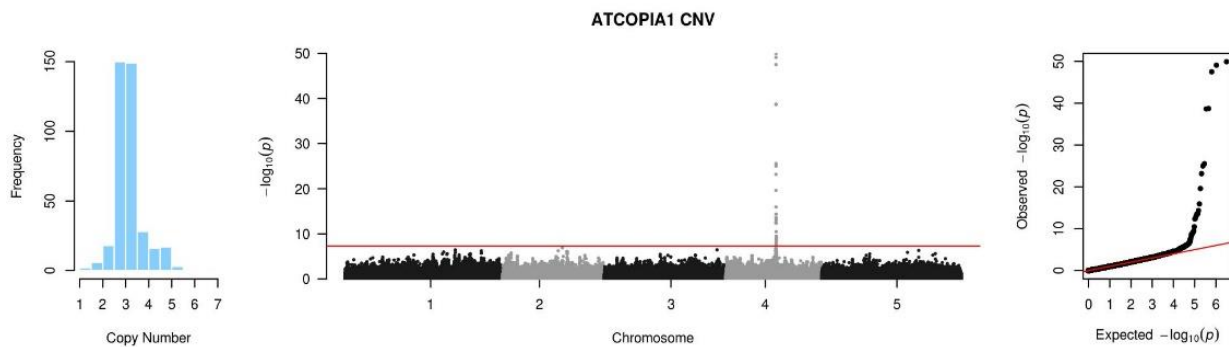
TE	GWAS associated interval	Leading SNP	Type of association	P-value			MAF	Candidate gene(s)
				Joined	Worldwide	Sweden		
ARNOLD1	Chr2:550102-595539	Chr2-560680	C/S	1.39E-18	2.51E-09	1.69E-08	0.077	



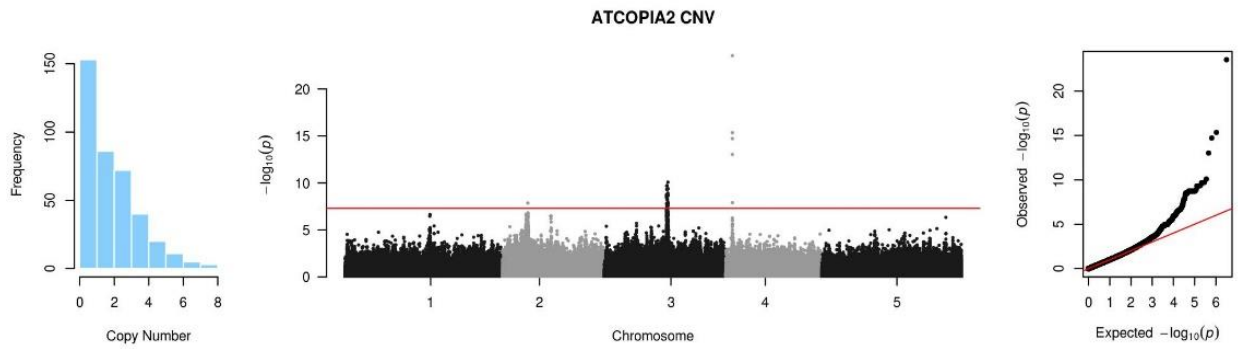
TE	GWAS associated interval	Leading SNP	Type of association	P-value			MAF	Candidate gene(s)
				Joined	Worldwide	Sweden		
ARNOLD2	Chr1:11886940-11900534	Chr1-11886941	C/S	2.02E-08	6.12E-05	2.78E-05	0.218	
ARNOLD2	Chr2:4360249-4361088	Chr2-4360250	TRANS	7.77E-10	3.68E-07	3.57E-05	0.269	AT2G11010, AT2G11015
ARNOLD2	Chr2:6531910-6609313	Chr2-6557527	C/S	1.66E-09	4.30E-03	5.10E-05	0.150	
ARNOLD2	Chr3:12047135-12123371	Chr3-12098457	TRANS	8.96E-09	9.98E-06	1.04E-04	0.474	AT3G30430, AT3G30456, AT3G30460, AT3G30520, AT3G30530



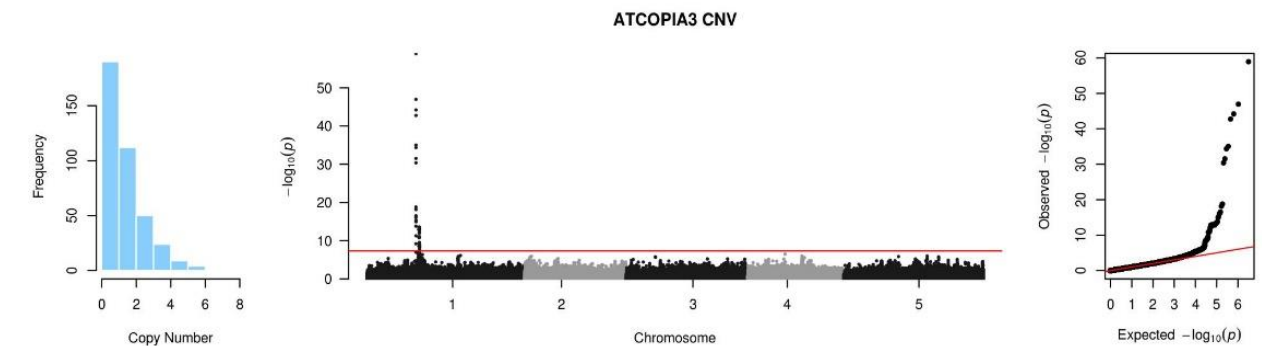
TE	GWAS associated interval	Leading SNP	Type of association	P-value			MAF	Candidate gene(s)
				Joined	Worldwide	Sweden		
AT9NMU1	Chr1:10280547-10280549	Chr1-10280548	TRANS	4.97E-09	2.99E-07	NA	0.344	AT1G29350, AT1G29355, AT1G29357, AT1G29370, AT1G29380, AT1G29390, AT1G29395, AT1G29400
AT9NMU1	Chr3:11495299-11495301	Chr3-11495300	TRANS	1.56E-08	1.85E-08	NA	0.228	AT3G29644
AT9NMU1	Chr4:6766764-6766766	Chr4-6766765	TRANS	1.97E-08	3.96E-05	1.24E-04	0.146	AT4G11070



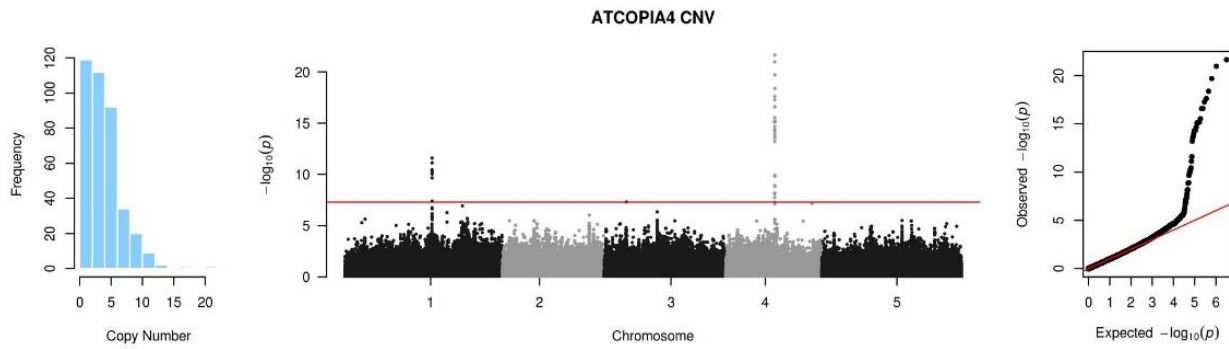
TE	GWAS associated interval	Leading SNP	Type of association	P-value			MAF	Candidate gene(s)
				Joined	Worldwide	Sweden		
ATCOPIA1	Chr4:9712617-9782935	Chr4-9733104	CIS	7.70E-50	2.24E-24	8.83E-29	0.095	



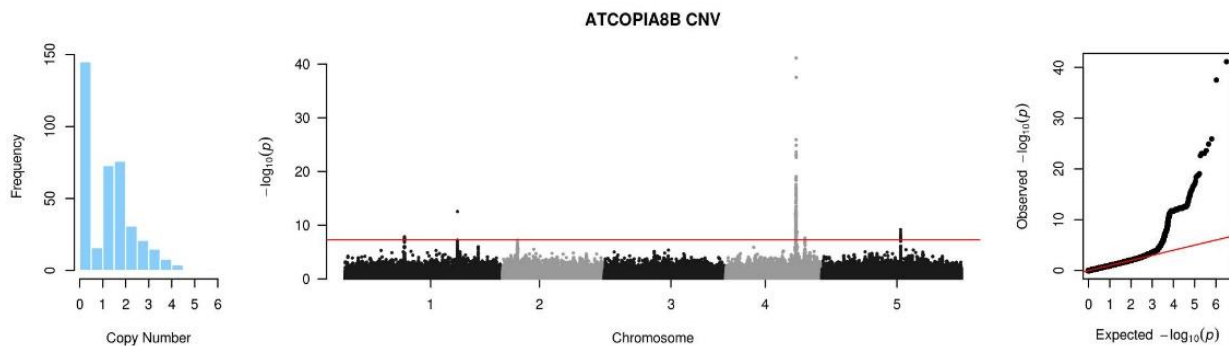
TE	GWAS associated interval	Leading SNP	Type of association	P-value			MAF	Candidate gene(s)
				Joined	Worldwide	Sweden		
ATCOPIA2	Chr2:4934115-4934117	Chr2-4934116	TRANS	1.37E-08	1.66E-03	2.49E-08	0.254	AT2G12290
ATCOPIA2	Chr3:12010819-12354238	Chr3-12315559	CIS	8.18E-11	7.97E-09	NA	0.118	
ATCOPIA2	Chr4:1313271-1317155	Chr4-1316584	CIS	2.86E-24	2.51E-11	3.49E-18	0.485	



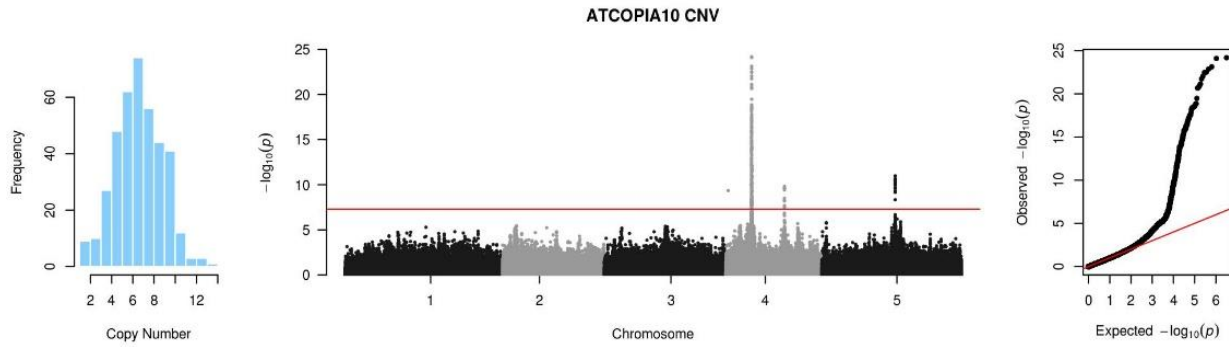
TE	GWAS associated interval	Leading SNP	Type of association	P-value			MAF	Candidate gene(s)
				Joined	Worldwide	Sweden		
ATCOPIA3	Chr1:9476030-9480581	Chr1-9478025	CIS	1.18E-59	4.27E-23	4.48E-41	0.479	
ATCOPIA3	Chr1:10065788-10144540	Chr1-10114390	TRANS	2.77E-10	1.00E-03	8.50E-08	0.244	Centromere



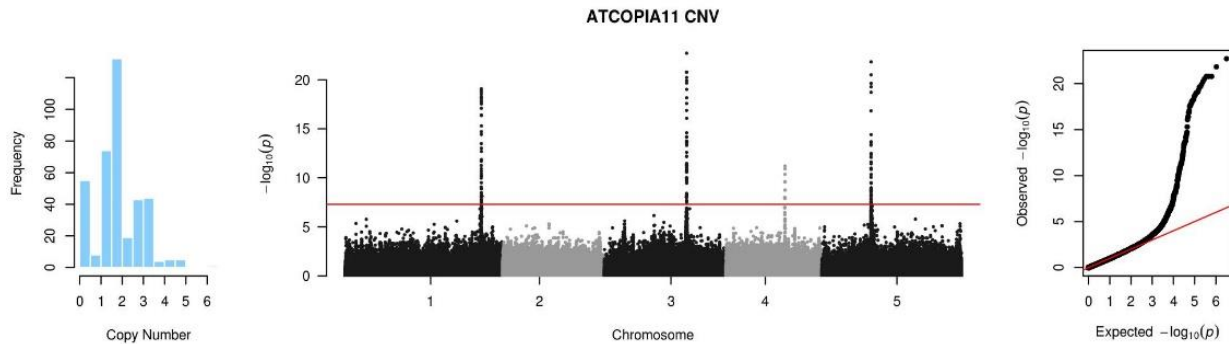
TE	GWAS associated interval	Leading SNP	Type of association	P-value			MAF	Candidate gene(s)
				Joined	Worldwide	Sweden		
ATCOPIA4	Chr1:16853511-16857178	Chr1-16853512	CIS	7.37E-12	1.82E-08	6.36E-05	0.456	
ATCOPIA4	Chr4:9483993-9488516	Chr4-9485781	CIS	2.24E-22	8.60E-14	7.06E-11	0.477	



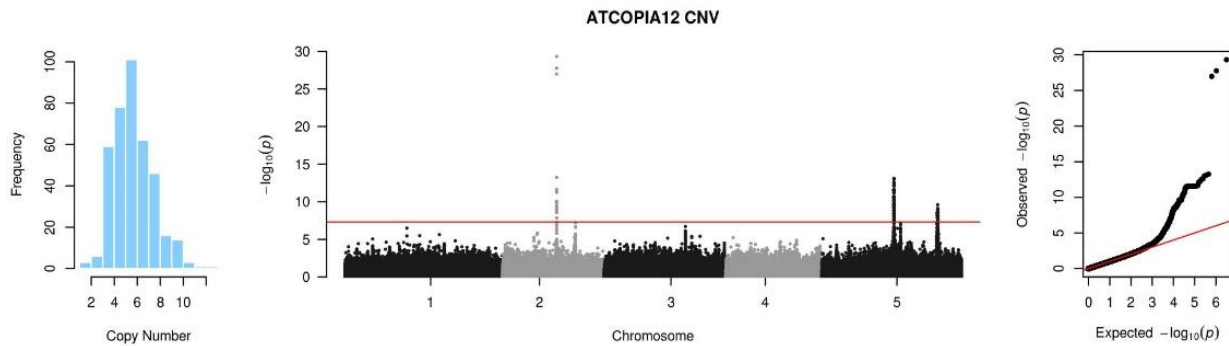
TE	GWAS associated interval	Leading SNP	Type of association	P-value			MAF	Candidate gene(s)
				Joined	Worldwide	Sweden		
ATCOPIA8B	Chr1:11505352-11506731	Chr1-11505353	TRANS	1.44E-08	1.09E-04	1.65E-05	0.300	AT1G32000, AT1G32010, AT1G32020, AT1G32030
ATCOPIA8B	Chr1:21752025-21752027	Chr1-21752026	CIS	2.90E-13	2.17E-05	1.42E-10	0.238	
ATCOPIA8B	Chr4:13531245-13816484	Chr4-13627337	CIS	7.46E-42	5.10E-28	8.82E-17	0.454	
ATCOPIA8B	Chr4:15327376-15327920	Chr4-15327377	CIS	2.63E-08	NA	1.10E-07	0.131	
ATCOPIA8B	Chr5:15241272-15244051	Chr5-15241273	TRANS	6.73E-10	2.96E-04	1.28E-07	0.413	AT5G38195



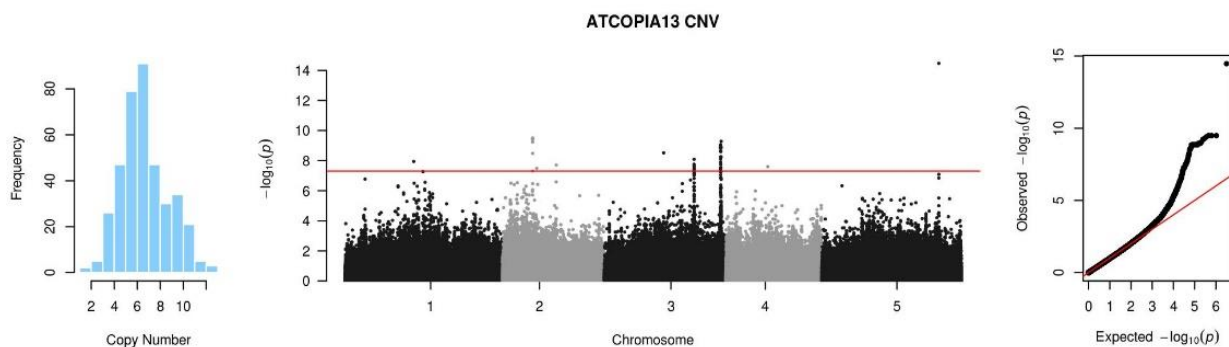
TE	GWAS associated interval	Leading SNP	Type of association	P-value			MAF	Candidate gene(s)
				Joined	Worldwide	Sweden		
ATCOPIA10	Chr4:500303-500305	Chr4-500304	TRANS	4.49E-10	1.34E-05	6.75E-06	0.269	AT4G01140, AT4G01150, AT4G01160, AT4G01170, AT4G01180, AT4G01190, AT4G01200, AT4G01210
ATCOPIA10	Chr4:4907701-5122395	Chr4-5034442	CIS	7.99E-25	9.13E-16	2.21E-10	0.297	
ATCOPIA10	Chr4:11364113-11380407	Chr4-11376940	CIS	1.54E-10	2.75E-07	7.48E-08	0.179	
ATCOPIA10	Chr5:14196459-14209447	Chr5-14196547	CIS	1.04E-11	4.65E-07	6.95E-07	0.362	



TE	GWAS associated interval	Leading SNP	Type of association	P-value			MAF	Candidate gene(s)
				Joined	Worldwide	Sweden		
ATCOPIA11	Chr1:26341260-26465474	Chr1-26370884	CIS	8.42E-20	1.06E-08	2.03E-13	0.300	
ATCOPIA11	Chr3:15867269-15931805	Chr3-15917909	CIS	1.95E-23	5.97E-16	1.08E-08	0.164	
ATCOPIA11	Chr4:11441725-11484545	Chr4-11460817	TRANS	1.16E-08	NA	5.65E-06	0.078	AT4G21500, AT4G21510, AT4G21520, AT4G21530, AT4G21534, AT4G21540, AT4G21550, AT4G21560, AT4G21570, AT4G21580, AT4G21585, AT4G21590
ATCOPIA11	Chr5:9529127-9560997	Chr5-9540237	CIS	1.48E-22	3.20E-13	1.04E-10	0.249	

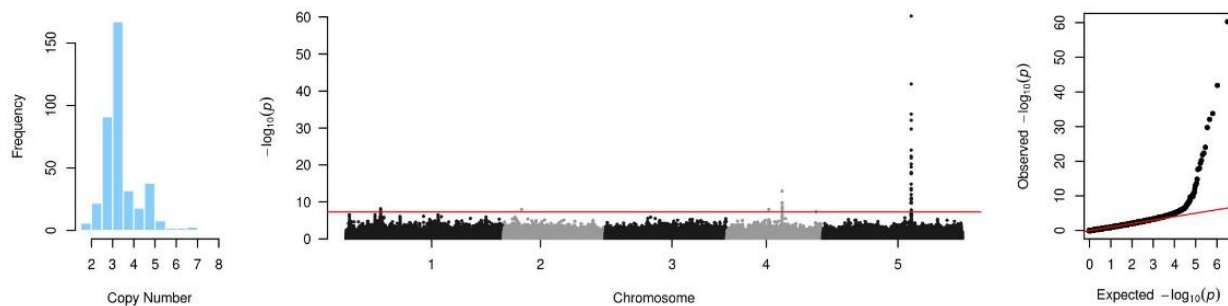


TE	GWAS associated interval	Leading SNP	Type of association	P-value			MAF	Candidate gene(s)
				Joined	Worldwide	Sweden		
ATCOPIA12	Chr2:10485359-10493333	Chr2-10490467	C/S	4.84E-30	1.14E-12	3.35E-19	0.415	
ATCOPIA12	Chr5:13941203-13960559	Chr5-13948475	C/S	9.90E-14	1.37E-08	1.06E-06	0.303	
ATCOPIA12	Chr5:22334744-22450916	Chr5-22388168	C/S	2.53E-10	7.56E-05	8.42E-08	0.079	



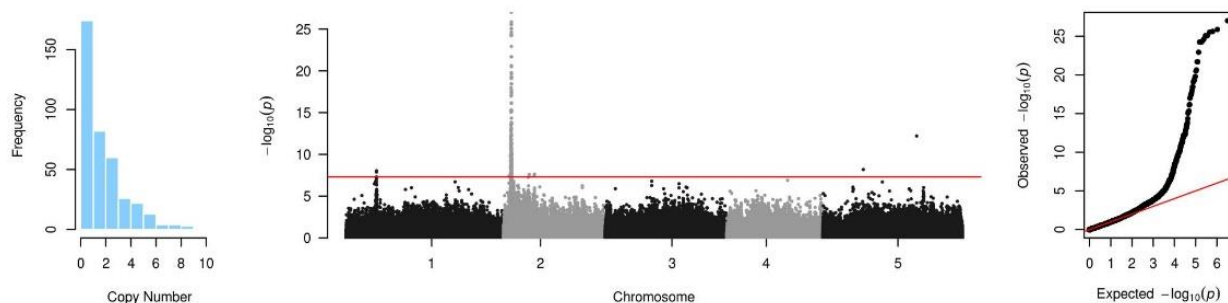
TE	GWAS associated interval	Leading SNP	Type of association	P-value			MAF	Candidate gene(s)
				Joined	Worldwide	Sweden		
ATCOPIA13	Chr2:10431596-10431598	Chr2-10431597	TRANS	1.97E-08	1.41E-05	4.39E-03	0.423	AT2G24570
ATCOPIA13	Chr2:5853595-5856494	Chr2-5853596	C/S	4.00E-10	8.09E-08	5.63E-04	0.138	
ATCOPIA13	Chr3:11495299-11495301	Chr3-11495300	TRANS	3.02E-09	4.13E-09	NA	0.228	AT3G29644
ATCOPIA13	Chr3:17353731-17359266	Chr3-17356687	TRANS	8.16E-09	1.60E-04	6.65E-06	0.221	AT3G47090, AT3G47100, AT3G47110, AT3G47120, AT3G47130, AT3G47140, AT3G47150, AT3G47160, AT3G47170
ATCOPIA13	Chr3:22502613-22593700	Chr3-22593699	TRANS	5.18E-10	3.94E-04	8.16E-08	0.274	AT3G60870, AT3G60880, AT3G60890, AT3G60897, AT3G60900, AT3G60910, AT3G60920, AT3G60940, AT3G60950, AT3G60960, AT3G60961, AT3G60966, AT3G60970, AT3G60972, AT3G60980, AT3G60990, AT3G61010, AT3G61028, AT3G61030, AT3G61035, AT3G61040, AT3G61050, AT3G61060
ATCOPIA13	Chr4:8148311-8148313	Chr4-8148312	TRANS	2.52E-08	2.38E-07	NA	0.226	AT4G14140 (MET2a)
ATCOPIA13	Chr5:22617655-22617657	Chr5-22617656	C/S	3.38E-15	4.29E-08	6.58E-09	0.151	

ATCOPIA15 CNV

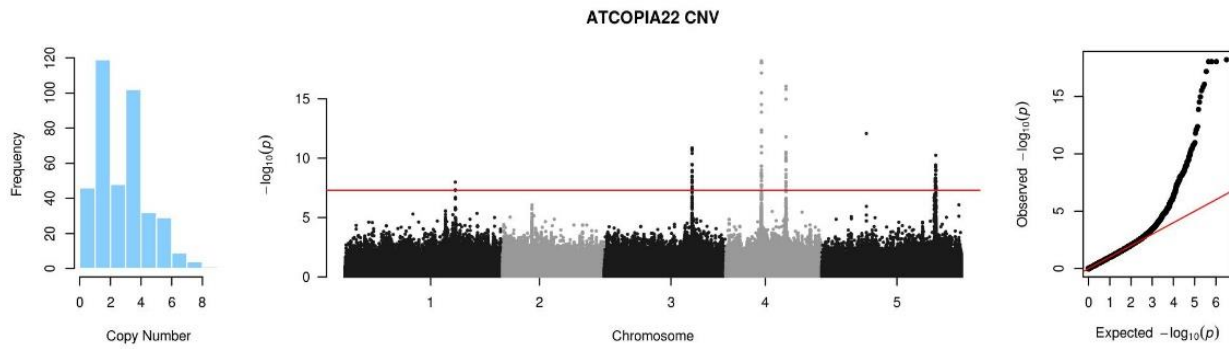


TE	GWAS associated interval	Leading SNP	Type of association	P-value			MAF	Candidate gene(s)
				Joined	Worldwide	Sweden		
ATCOPIA15	Chr1:6691019-6693438	Chr1-6691020	TRANS	6.95E-09	1.07E-04	3.94E-07	0.264	AT1G19340
ATCOPIA15	Chr2:3543097-3543099	Chr2-3543098	TRANS	1.01E-08	2.68E-07	NA	0.056	.
ATCOPIA15	Chr4:8140855-8140857	Chr4-8140856	TRANS	1.01E-08	1.12E-06	NA	0.154	AT4G14140 (MET2a)
ATCOPIA15	Chr5:17086844-17108149	Chr5-17095071	CIS	5.36E-61	1.59E-29	3.92E-43	0.200	

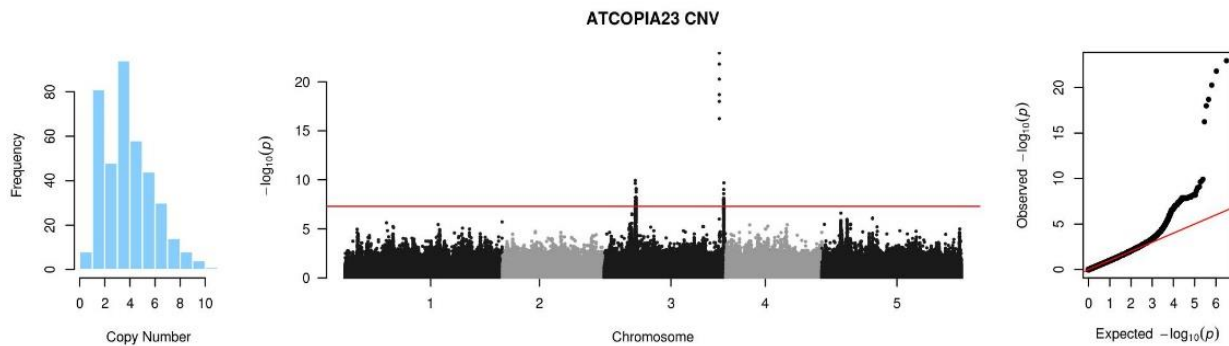
ATCOPIA21 CNV



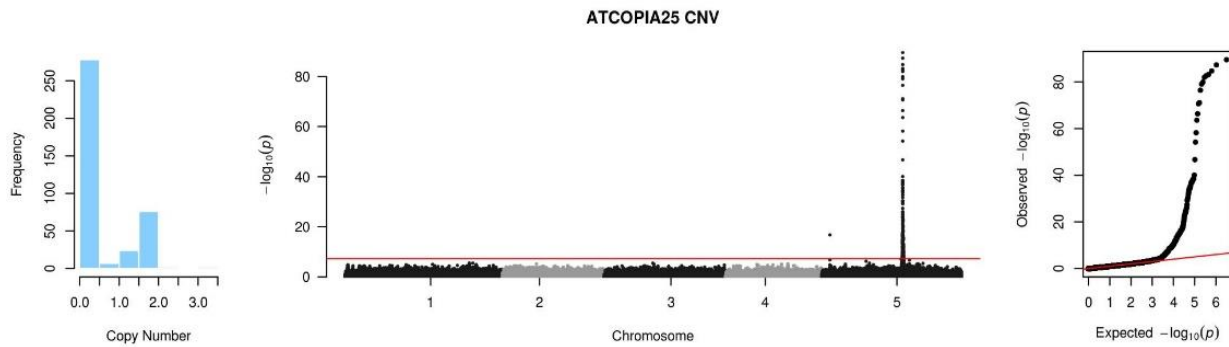
TE	GWAS associated interval	Leading SNP	Type of association	P-value			MAF	Candidate gene(s)
				Joined	Worldwide	Sweden		
ATCOPIA21	Chr1:5907163-5932529	Chr1-5932528	TRANS	9.27E-09	1.07E-02	3.30E-07	0.097	AT1G17240, AT1G17250, AT1G17255, AT1G17260, AT1G17270, AT1G17280, AT1G17285, AT1G17290, AT1G17300, AT1G17310, AT1G17330, AT1G17340, AT1G17345, AT1G17350
ATCOPIA21	Chr2:1361817-1569513	Chr2-1545294	TRANS	1.00E-27	2.63E-11	2.25E-17	0.162	Centromere
ATCOPIA21	Chr2:5003212-5003214	Chr2-5003213	TRANS	2.53E-08	NA	4.52E-05	0.062	AT2G12400, AT2G12405
ATCOPIA21	Chr2:6027055-6027057	Chr2-6027056	TRANS	2.33E-08	NA	3.70E-06	0.079	AT2G14210, AT2G14247, AT2G14255
ATCOPIA21	Chr5:7834869-7834871	Chr5-7834870	TRANS	6.44E-09	2.00E-05	9.53E-05	0.156	AT5G23230, AT5G23240, AT5G23250, AT5G23260, AT5G23270, AT5G23280
ATCOPIA21	Chr5:18146702-18146704	Chr5-18146703	CIS	6.37E-13	3.74E-05	2.26E-10	0.341	



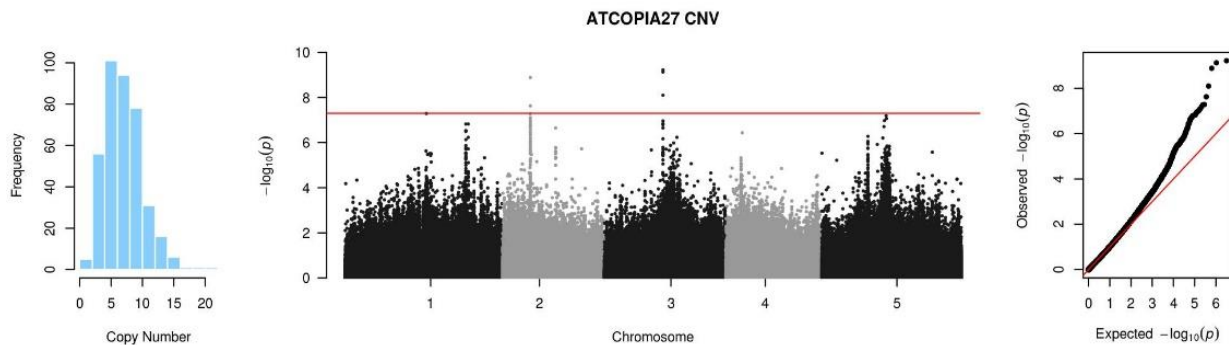
TE	GWAS associated interval	Leading SNP	Type of association	P-value			MAF	Candidate gene(s)
				Joined	Worldwide	Sweden		
ATCOPIA22	Chr1:21331281-21331283	Chr1-21331282	TRANS	1.03E-08	2.11E-05	5.79E-05	0.131	AT1G57570, AT1G57580, AT1G57590, AT1G57600, AT1G57610, AT1G57613
ATCOPIA22	Chr3:16986926-16997760	Chr3-16990821	C/S	1.56E-11	8.86E-10	3.02E-04	0.233	
ATCOPIA22	Chr4:6889588-6925403	Chr4-6914365	C/S	6.20E-19	7.33E-10	3.78E-11	0.415	
ATCOPIA22	Chr4:11674680-11689673	Chr4-11683009	C/S	8.60E-17	3.88E-10	5.46E-08	0.413	
ATCOPIA22	Chr5:8626824-8626826	Chr5-8626825	C/S	8.35E-13	6.06E-06	7.19E-09	0.321	
ATCOPIA22	Chr5:21983780-22083456	Chr5-22008321	C/S	3.64E-10	7.01E-04	3.74E-08	0.397	



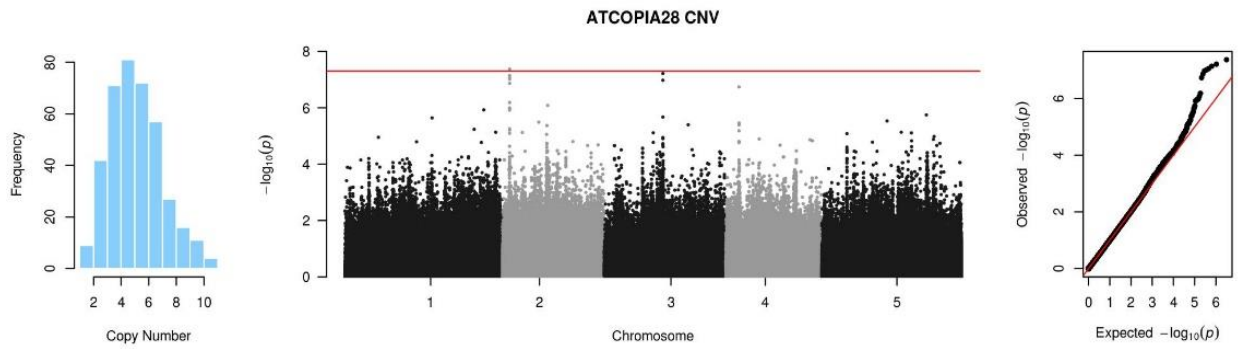
TE	GWAS associated interval	Leading SNP	Type of association	P-value			MAF	Candidate gene(s)
				Joined	Worldwide	Sweden		
ATCOPIA23	Chr3:6003034-6152323	Chr3-6009730	C/S	1.18E-10	NA	3.66E-10	0.428	
ATCOPIA23	Chr3:22233653-22236246	Chr3-22234997	C/S	1.13E-23	4.31E-13	5.84E-13	0.303	
ATCOPIA23	Chr3:23091858-23119620	Chr3-23095275	C/S	9.59E-10	2.32E-10	NA	0.387	



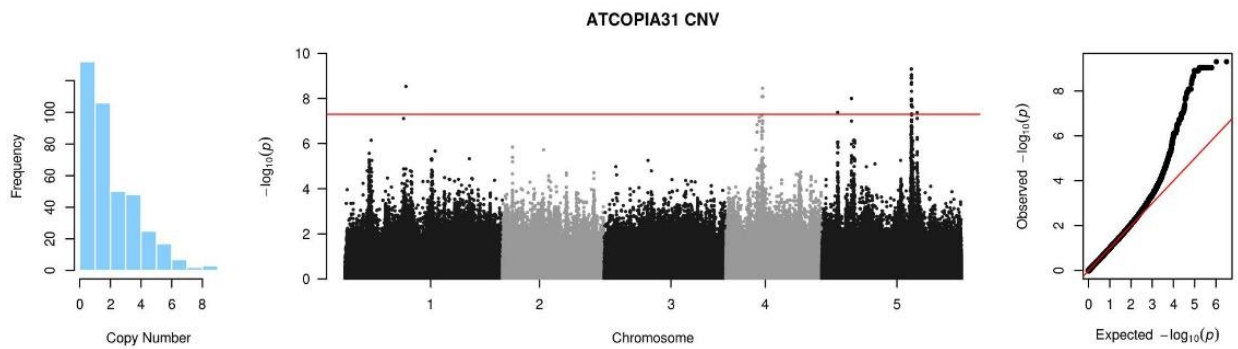
TE	GWAS associated interval	Leading SNP	Type of association	P-value			MAF	Candidate gene(s)
				Joined	Worldwide	Sweden		
ATCOPIA25	Chr5:15631732-15722788	Chr5-1565233	TRANS	1.71E-17	2.75E-08	3.32E-11	0.387	AT5G05240, AT5G05250, AT5G05260, AT5G05270, AT5G05280, AT5G05282, AT5G05290, AT5G05300, AT5G05310, AT5G05320
ATCOPIA25	Chr5:1565232-1565234	Chr5-15536214	TRANS	4.87E-09	1.07E-08	1.13E-01	0.338	AT5G38760, AT5G38770, AT5G38780, AT5G38790, AT5G38800, AT5G38810, AT5G38820, AT5G38830
ATCOPIA25	Chr5:15534667-15536215	Chr5-15646847	CIS	2.96E-90	4.49E-49	2.52E-43	0.244	



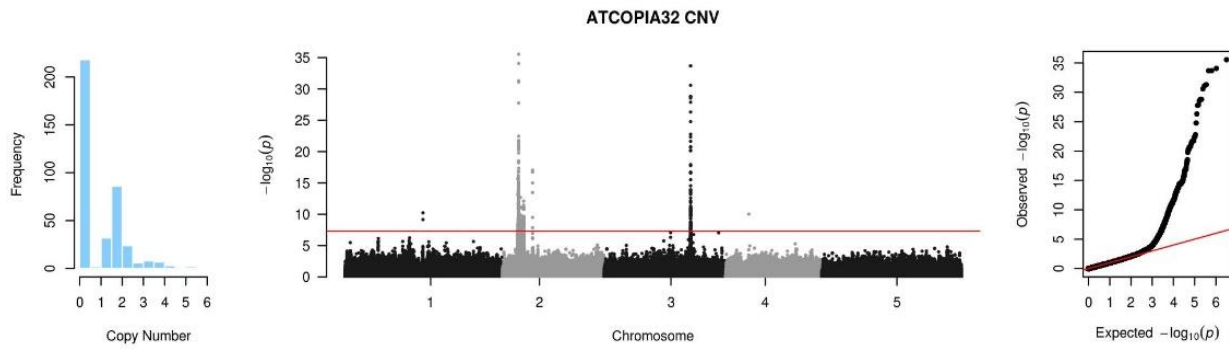
TE	GWAS associated interval	Leading SNP	Type of association	P-value			MAF	Candidate gene(s)
				Joined	Worldwide	Sweden		
ATCOPIA27	Chr2:5395709-5399290	Chr2-5399289	CIS	1.30E-09	3.06E-04	3.54E-07	0.426	
ATCOPIA27	Chr3:11336905-11341663	Chr3-11341654	CIS	6.02E-10	NA	3.69E-08	0.364	



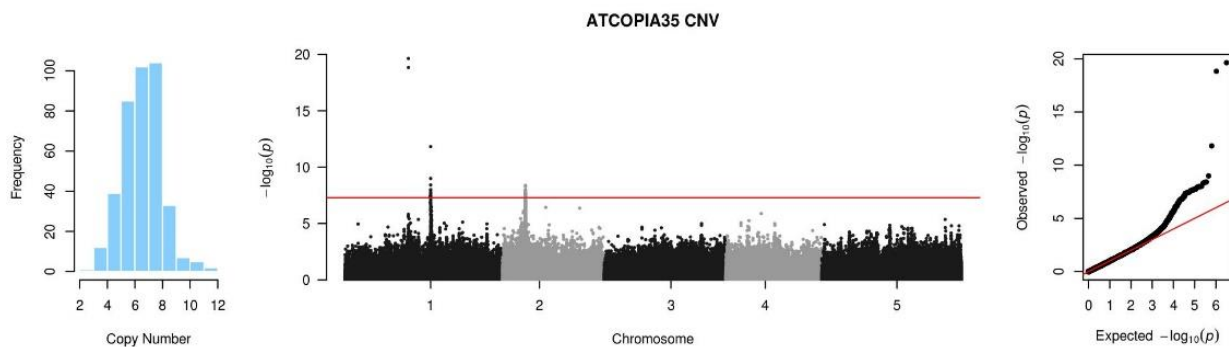
TE	GWAS associated interval	Leading SNP	Type of association	P-value			MAF	Candidate gene(s)
				Joined	Worldwide	Sweden		



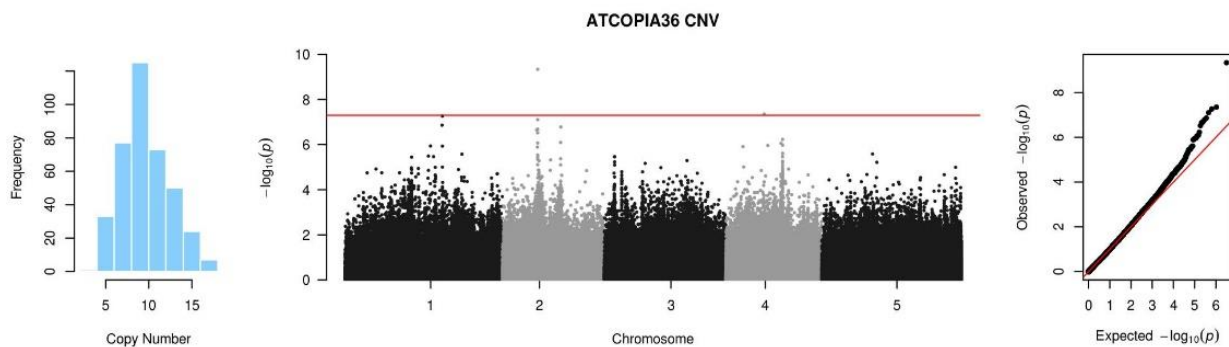
TE	GWAS associated interval	Leading SNP	Type of association	P-value			MAF	Candidate gene(s)
				Joined	Worldwide	Sweden		
ATCOPIA31	Chr1:11792244-11792246	Chr1-11792245	CIS	2.93E-09	2.70E-04	1.90E-06	0.233	
ATCOPIA31	Chr4:7115170-7148336	Chr4-7115171	TRANS	8.21E-09	8.98E-04	NA	0.056	AT4G11810, AT4G11820, AT4G11830, AT4G11840, AT4G11845, AT4G11850, AT4G11860, AT4G11870, AT4G11876, AT4G11880, AT4G11890, AT4G11900, AT4G11910, AT4G11911
ATCOPIA31	Chr5:17518855-17518857	Chr5-5749637	CIS	1.00E-08	1.04E-04	8.20E-05	0.121	
ATCOPIA31	Chr5:5749636-5753383	Chr5-17518856	TRANS	2.39E-08	9.60E-05	9.55E-06	0.179	AT5G43620/AT5G43630



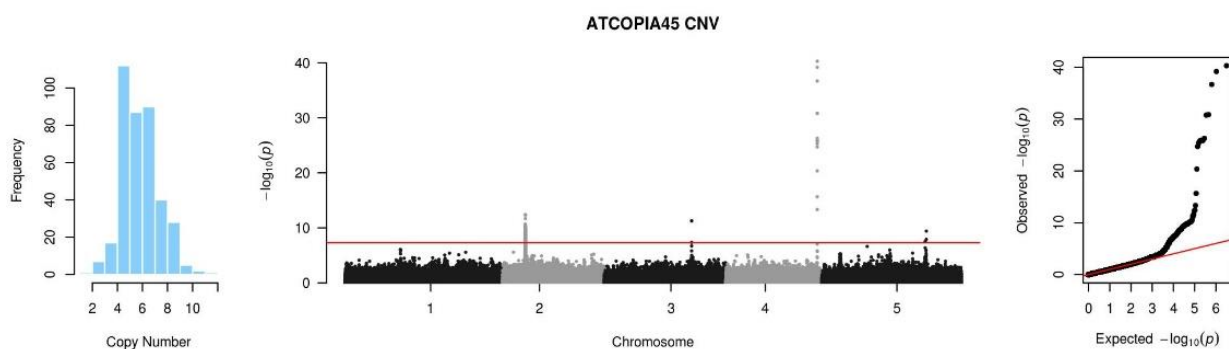
TE	GWAS associated interval	Leading SNP	Type of association	P-value			MAF	Candidate gene(s)
				Joined	Worldwide	Sweden		
ATCOPIA32	Chr1:15081095-15081108	Chr1-15081107	TRANS	5.86E-11	5.25E-07	4.82E-06	0.262	AT1G40104
ATCOPIA32	Chr2:2988052-3233924	Chr2-3165157	CIS	2.85E-36	4.63E-20	1.27E-19	0.213	
ATCOPIA32	Chr2:3912394-4142561	Chr2-4116428	TRANS	7.79E-13	6.01E-07	4.03E-10	0.149	AT2G10260, AT2G10340, AT2G10440, AT2G10450, AT2G10535, AT2G10537, AT2G10550, AT2G10557, AT2G10560, AT2G10602, AT2G10606 (AtMIR396a) , AT2G10608
ATCOPIA32	Chr2:5842521-5844665	Chr2-5844284	CIS	9.22E-18	3.28E-13	4.77E-05	0.141	
ATCOPIA32	Chr3:16653606-16706917	Chr3-16692698	CIS	2.05E-34	1.54E-15	1.28E-19	0.228	
ATCOPIA32	Chr4:4490149-4490151	Chr4-4490150	TRANS	9.43E-11	5.10E-06	1.29E-06	0.136	



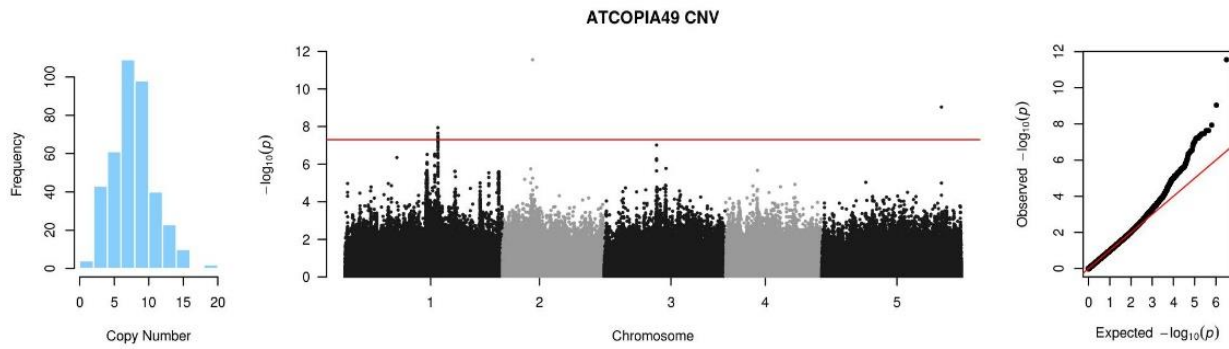
TE	GWAS associated interval	Leading SNP	Type of association	P-value			MAF	Candidate gene(s)
				Joined	Worldwide	Sweden		
ATCOPIA35	Chr1:12275476-12276017	Chr1-12275477	CIS	2.33E-20	4.01E-12	1.10E-08	0.238	
ATCOPIA35	Chr1:16569369-16574867	Chr1-16569613	CIS	1.54E-12	8.37E-08	5.06E-06	0.492	
ATCOPIA35	Chr2:4433215-4466730	Chr2-4460190	CIS	9.72E-09	3.94E-04	3.39E-07	0.267	



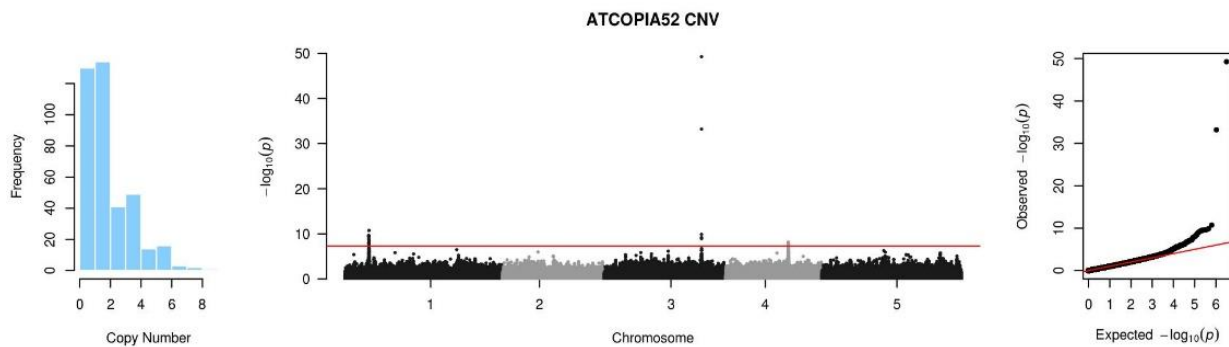
TE	GWAS associated interval	Leading SNP	Type of association	P-value			MAF	Candidate gene(s)
				Joined	Worldwide	Sweden		
ATCOPIA36	Chr2:6823369-6823371	Chr2-6823370	C/S	4.60E-10	1.09E-08	5.98E-04	0.141	



TE	GWAS associated interval	Leading SNP	Type of association	P-value			MAF	Candidate gene(s)
				Joined	Worldwide	Sweden		
ATCOPIA45	Chr2:4424480-4470623	Chr2-4448145	C/S	3.80E-13	2.07E-06	5.36E-11	0.326	
ATCOPIA45	Chr3:16887713-16888130	Chr3-16887714	C/S	5.06E-12	1.15E-07	1.03E-05	0.167	
ATCOPIA45	Chr4:17712213-17716723	Chr4-17714966	C/S	4.92E-41	4.04E-20	4.54E-22	0.385	
ATCOPIA45	Chr5:19992222-20214930	Chr5-20214929	C/S	3.72E-10	2.05E-06	3.82E-05	0.113	

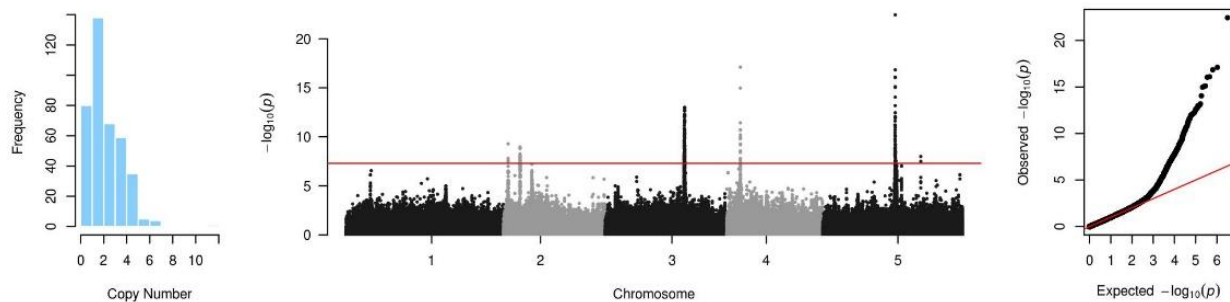


TE	GWAS associated interval	Leading SNP	Type of association	P-value			MAF	Candidate gene(s)
				Joined	Worldwide	Sweden		
ATCOPIA49	Chr1:17971317-17972346	Chr1-17971318	TRANS	2.30E-08	1.89E-02	1.90E-07	0.062	AT1G48610, AT1G48620
ATCOPIA49	Chr5:23137090-23137092	Chr5-23137091	C/S	9.10E-10	1.05E-06	9.76E-04	0.300	



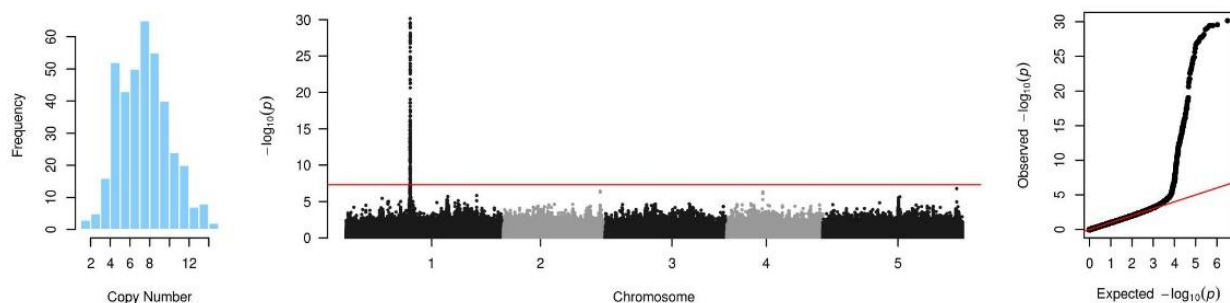
TE	GWAS associated interval	Leading SNP	Type of association	P-value			MAF	Candidate gene(s)
				Joined	Worldwide	Sweden		
ATCOPIA52	Chr1:4601427-4637435	Chr1-4608098	C/S	2.46E-10	NA	6.84E-10	0.223	
ATCOPIA52	Chr3:18791446-18794342	Chr3-18794341	C/S	5.44E-50	9.81E-29	3.49E-23	0.341	
ATCOPIA52	Chr4:12087454-12124406	Chr4-12087455	C/S	6.92E-09	8.35E-06	2.69E-05	0.169	

ATCOPIA56 CNV

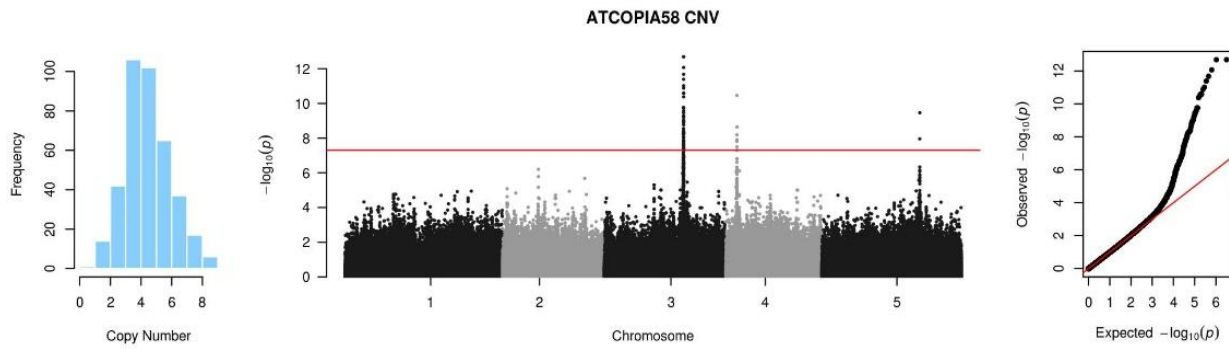


TE	GWAS associated interval	Leading SNP	Type of association	P-value			MAF	Candidate gene(s)
				Joined	Worldwide	Sweden		
ATCOPIA56	Chr2:926086-928373	Chr2-928372	CIS	1.59E-08	NA	1.59E-08	0.120	
ATCOPIA56	Chr2:3234681-3237292	Chr2-3234682	TRANS	1.08E-09	7.71E-07	6.15E-04	0.238	AT2G07742, AT2G07749, AT2G07771, AT2G07773, AT2G07776
ATCOPIA56	Chr3:15250312-15250314	Chr3-15250313	TRANS	7.72E-09	8.45E-03	1.25E-07	0.126	AT3G43300
ATCOPIA56	Chr4:2638412-2651109	Chr4-2644995	CIS	7.81E-18	6.95E-11	9.70E-10	0.436	
ATCOPIA56	Chr5:13954062-14040109	Chr5-13998970	CIS	3.65E-23	8.03E-15	2.19E-10	0.369	
ATCOPIA56	Chr5:14126672-14136469	Chr5-14126673	TRANS	2.91E-08	7.05E-04	2.99E-06	0.238	AT5G35970, AT5G35980, AT5G35995, AT5G36000, AT5G36001, AT5G36002
ATCOPIA56	Chr5:18934190-18934192	Chr5-18934191	TRANS	9.89E-09	NA	5.27E-07	0.128	AT5G46640, AT5G46650, AT5G46660, AT5G46670, AT5G46680

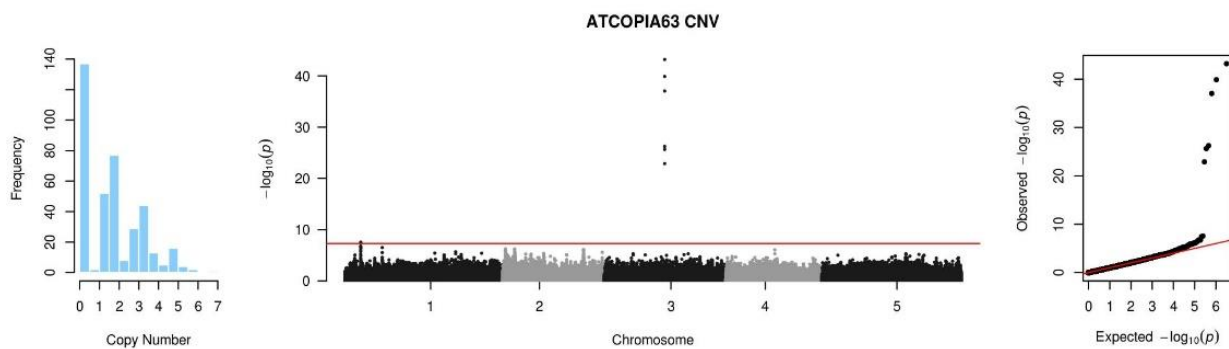
ATCOPIA57 CNV



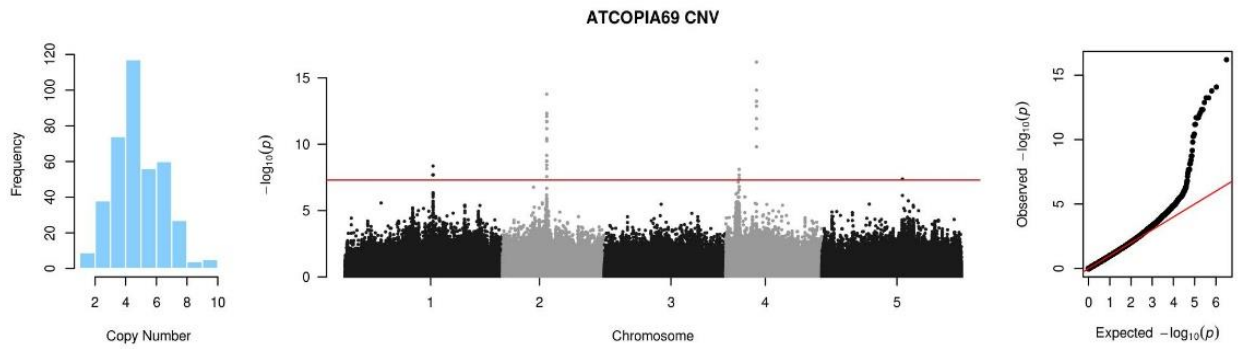
TE	GWAS associated interval	Leading SNP	Type of association	P-value			MAF	Candidate gene(s)
				Joined	Worldwide	Sweden		
ATCOPIA57	Chr1:12397425-12419360	Chr1-12400225	CIS	7.06E-31	4.24E-20	6.40E-12	0.369	



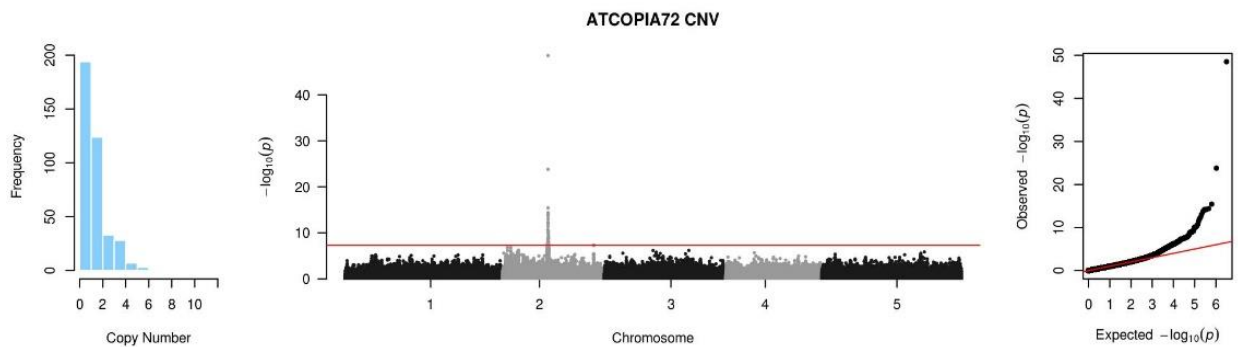
TE	GWAS associated interval	Leading SNP	Type of association	P-value			MAF	Candidate gene(s)
				Joined	Worldwide	Sweden		
ATCOPIA58	Chr3:15297177-15337326	Chr3-15333805	CIS	1.73E-10	1.09E-05	9.17E-07	0.264	
ATCOPIA58	Chr4:2196868-2204565	Chr4-2203315	CIS	2.29E-09	5.55E-03	1.06E-09	0.351	
ATCOPIA58	Chr5:18930571-18937598	Chr5-18937597	CIS	3.45E-10	NA	4.06E-11	0.295	



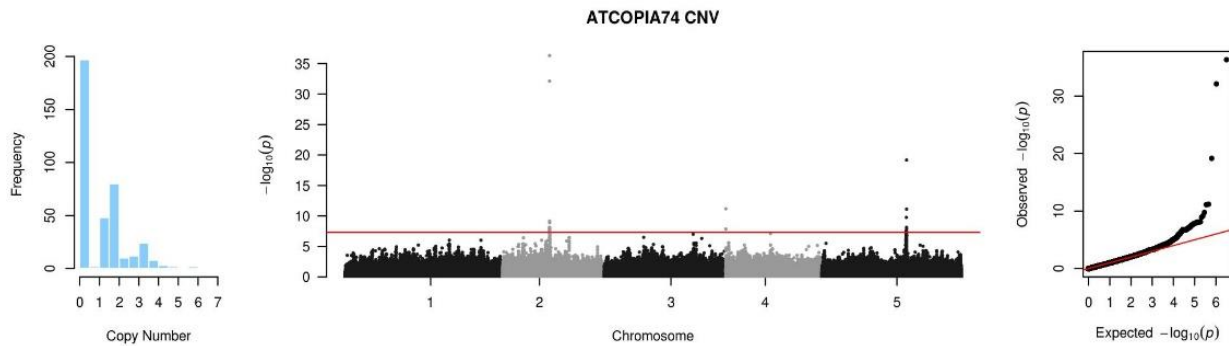
TE	GWAS associated interval	Leading SNP	Type of association	P-value			MAF	Candidate gene(s)
				Joined	Worldwide	Sweden		
ATCOPIA63	Chr1:3070484-3070486	Chr1-3070485	TRANS	2.75E-08	7.88E-06	NA	0.054	AT1G09480, AT1G09483, AT1G09490, AT1G09500, AT1G09510, AT1G09520, AT1G09530
ATCOPIA63	Chr3:11665988-11669337	Chr3-11668694	CIS	6.44E-44	3.05E-27	3.27E-22	0.367	



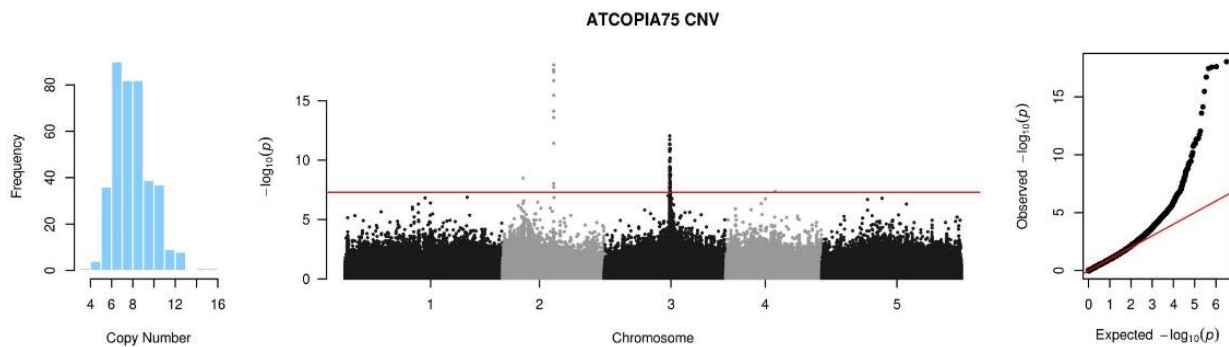
TE	GWAS associated interval	Leading SNP	Type of association	P-value			MAF	Candidate gene(s)
				Joined	Worldwide	Sweden		
ATCOPIA69	Chr1:17021538-17021715	Chr1-17021714	TRANS	4.39E-09	6.77E-07	NA	0.079	AT1G45000, AT1G45010, AT1G45015, AT1G45050
ATCOPIA69	Chr2:8562490-8566582	Chr2-8566517	CIS	1.68E-14	6.79E-09	1.92E-06	0.341	
ATCOPIA69	Chr4:2603653-2604070	Chr4-2604069	CIS	7.85E-09	5.67E-04	2.35E-07	0.185	
ATCOPIA69	Chr4:5967301-5969646	Chr4-5969528	CIS	6.40E-17	6.19E-12	4.63E-07	0.346	



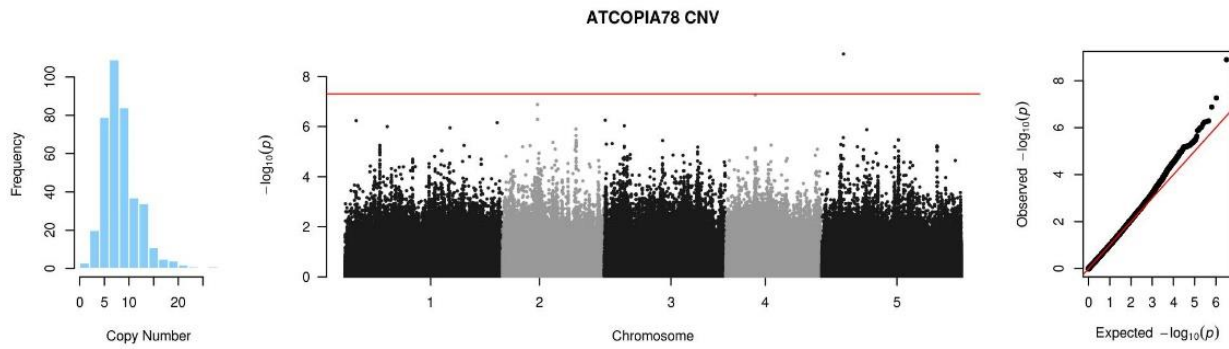
TE	GWAS associated interval	Leading SNP	Type of association	P-value			MAF	Candidate gene(s)
				Joined	Worldwide	Sweden		
ATCOPIA72	Chr2:8780704-8939446	Chr2-8820365	CIS	3.03E-49	6.58E-25	3.06E-24	0.474	



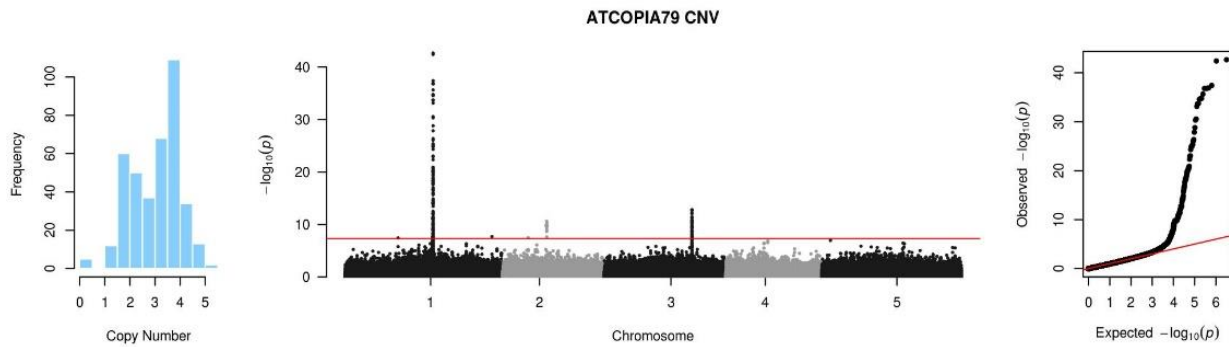
TE	GWAS associated interval	Leading SNP	Type of association	P-value			MAF	Candidate gene(s)
				Joined	Worldwide	Sweden		
ATCOPIA74	Chr2:9096957-9167689	Chr2-9124731	CIS	4.93E-37	4.19E-20	6.36E-19	0.438	
ATCOPIA74	Chr4:30568-41778	Chr4-41777	TRANS	6.56E-12	2.39E-07	2.50E-05	0.262	AT4G00060, AT4G00070, AT4G00080, AT4G00085, AT4G00090, AT4G00100, AT4G00110, AT4G00120, AT4G00124, AT4G00130, AT4G00140
ATCOPIA74	Chr5:16320093-16398302	Chr5-16389345	CIS	6.89E-20	1.13E-15	NA	0.090	



TE	GWAS associated interval	Leading SNP	Type of association	P-value			MAF	Candidate gene(s)
				Joined	Worldwide	Sweden		
ATCOPIA75	Chr2:3989860-3989862	Chr2-3989861	TRANS	3.13E-09	2.98E-09	8.57E-02	0.238	AT2G10340
ATCOPIA75	Chr2:9928878-9932430	Chr2-9930929	CIS	9.30E-19	1.17E-10	1.92E-10	0.477	
ATCOPIA75	Chr3:12834786-12834788	Chr3-12834787	TRANS	1.59E-09	9.04E-06	2.06E-06	0.338	

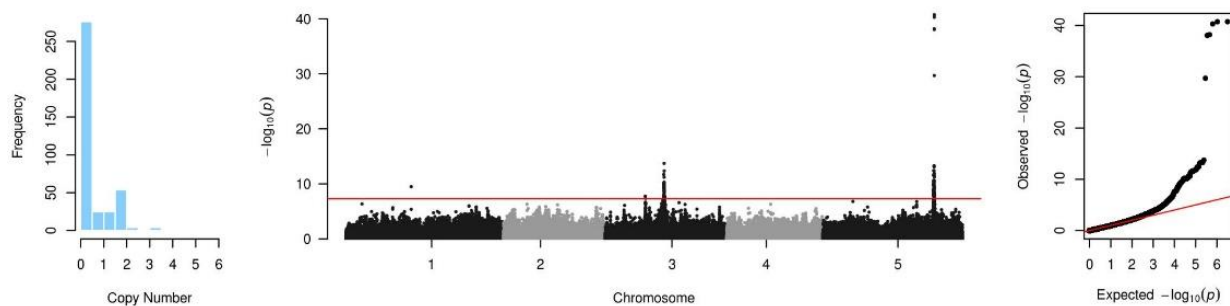


TE	GWAS associated interval	Leading SNP	Type of association	P-value			MAF	Candidate gene(s)
				Joined	Worldwide	Sweden		
ATCOPIA78	Chr5:4188262-4188264	Chr5-4188263	TRANS	1.27E-09	3.94E-10	NA	0.051	AT5G13160, AT5G13170, AT5G13180



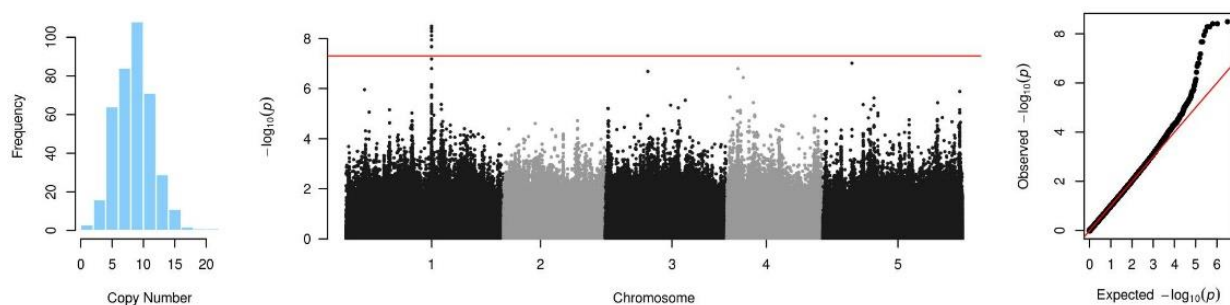
TE	GWAS associated interval	Leading SNP	Type of association	P-value			MAF	Candidate gene(s)
				Joined	Worldwide	Sweden		
ATCOPIA79	Chr1:16980013-17031219	Chr1-17025377	CIS	3.85E-43	1.93E-23	2.19E-23	0.292	
ATCOPIA79	Chr1:28424371-28424373	Chr1-28424372	TRANS	2.10E-08	1.14E-07	NA	0.118	AT1G75660, AT1G75670, AT1G75680, AT1G75690, AT1G75700, AT1G75710, AT1G75717
ATCOPIA79	Chr2:8562348-8566414	Chr2-8564058	TRANS	2.97E-11	1.65E-06	NA	0.056	AT2G19820, AT2G19830, AT2G19850, AT2G19860, AT2G19870
ATCOPIA79	Chr3:16954379-16964030	Chr3-16960376	CIS	1.73E-10	1.90E-05	1.93E-07	0.259	

ATCOPIA85 CNV

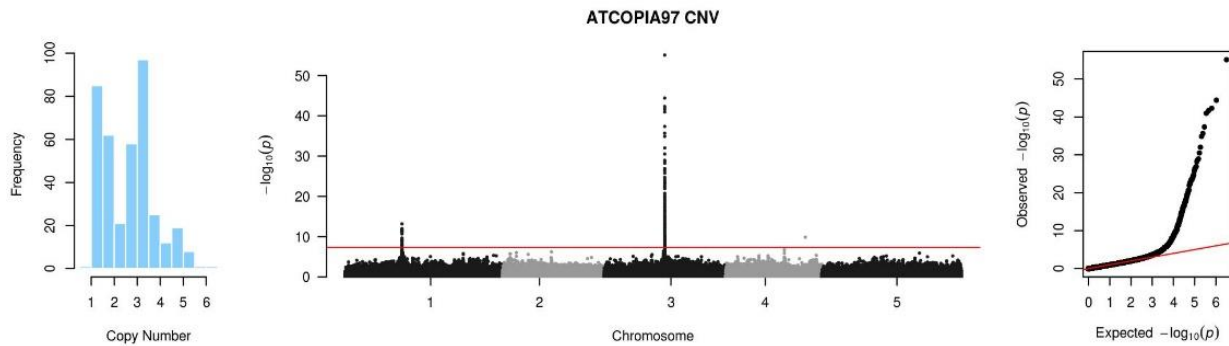


TE	GWAS associated interval	Leading SNP	Type of association	P-value			MAF	Candidate gene(s)
				Joined	Worldwide	Sweden		
ATCOPIA85	Chr1:12622354-12622356	Chr1-12622355	CIS	3.18E-10	NA	2.16E-08	0.121	
ATCOPIA85	Chr3:7751220-7751222	Chr3-7751221	TRANS	1.63E-08	3.56E-08	NA	0.077	AT3G21970, AT3G21980, AT3G21990, AT3G22000, AT3G22010, AT3G22020, AT3G22022, AT3G22030
ATCOPIA85	Chr3:11289786-11522466	Chr3-11350047	TRANS	1.52E-10	NA	6.32E-18	0.146	AT3G29590, AT3G29636, AT3G29410, AT3G29644, AT3G29639, AT3G29638, AT3G29635, AT3G29633, AT3G29630, AT3G29390, AT3G29580, AT3G29575, AT3G29570, AT3G29560, AT3G29450, AT3G29431, AT3G29430, AT3G29400
ATCOPIA85	Chr5:21392325-21611278	Chr5-21545142	CIS	1.88E-41	5.91E-12	5.81E-61	0.154	

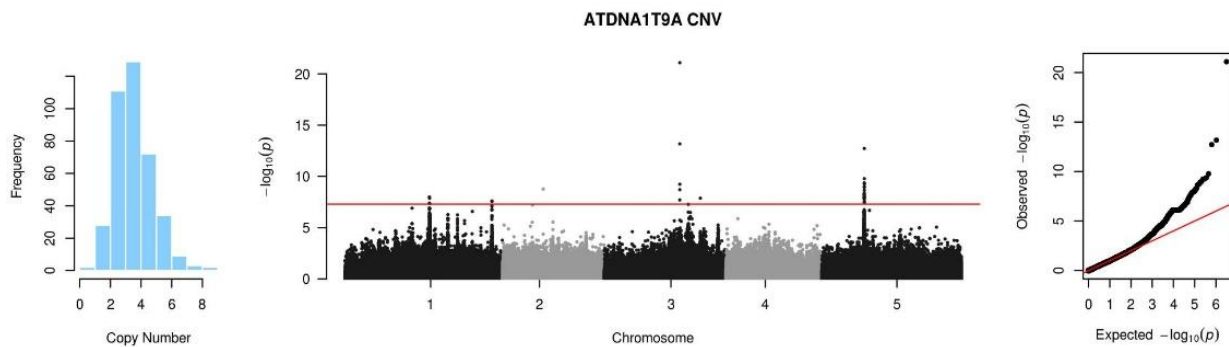
ATCOPIA93 CNV



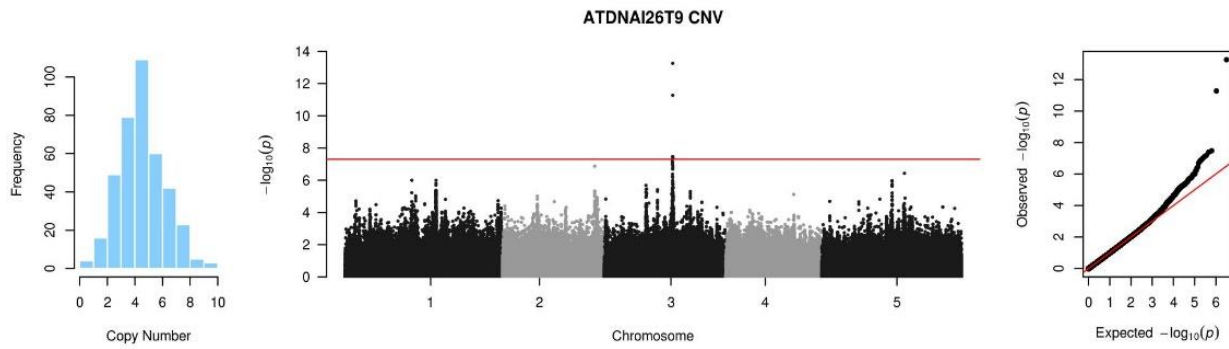
TE	GWAS associated interval	Leading SNP	Type of association	P-value			MAF	Candidate gene(s)
				Joined	Worldwide	Sweden		
ATCOPIA93	Chr1:16549768-16554098	Chr1-16549829	CIS	5.20E-09	1.29E-05	6.58E-05	0.413	



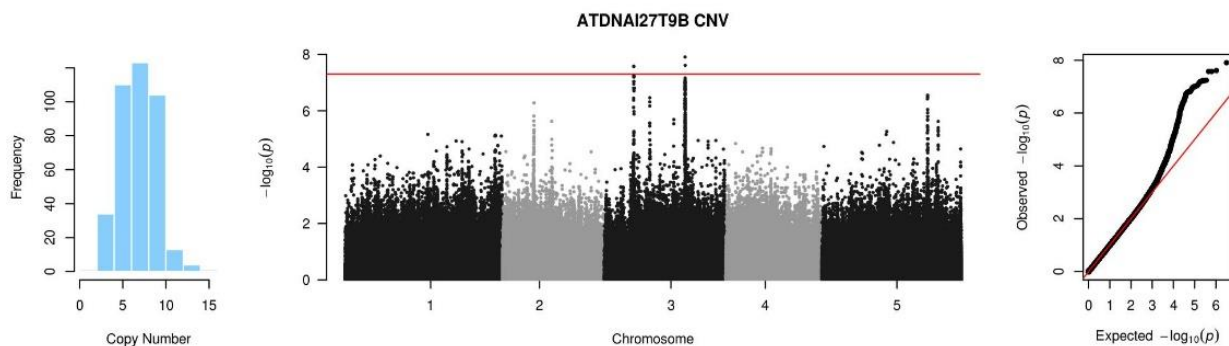
TE	GWAS associated interval	Leading SNP	Type of association	P-value			MAF	Candidate gene(s)
				Joined	Worldwide	Sweden		
ATCOPIA97	Chr1:11011579-11013340	Chr1-11012665	CIS	2.28E-10	5.22E-05	4.04E-06	0.228	
ATCOPIA97	Chr3:11670224-11717607	Chr3-11680834	CIS	7.99E-56	6.09E-26	4.23E-33	0.410	
ATCOPIA97	Chr4:15398043-15398045	Chr4-15398044	TRANS	1.31E-10	2.46E-04	4.79E-09	0.279	AT4G31830



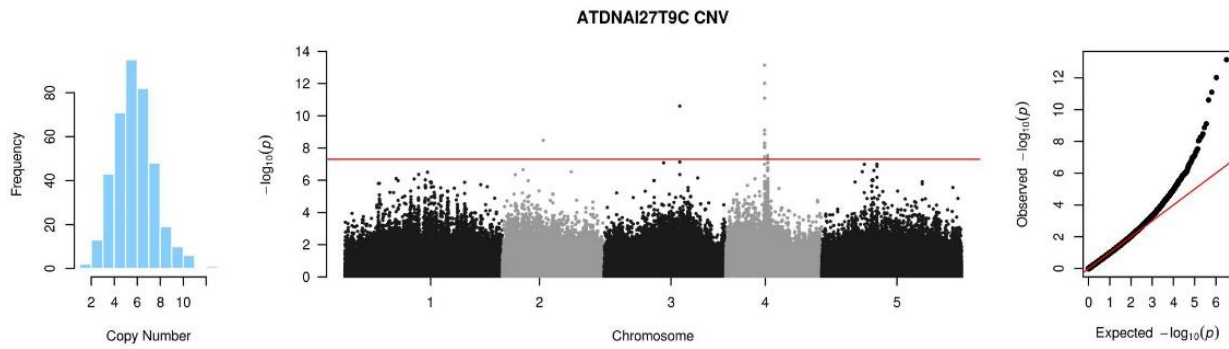
TE	GWAS associated interval	Leading SNP	Type of association	P-value			MAF	Candidate gene(s)
				Joined	Worldwide	Sweden		
ATDNA1T9A	Chr1:16343965-16361551	Chr1-16343966	CIS	1.02E-08	2.57E-07	1.56E-03	0.169	AT1G75660, AT1G75670, AT1G75680, AT1G75690, AT1G75700, AT1G75710
ATDNA1T9A	Chr1:28419353-28419375	Chr1-28419354	TRANS	2.62E-08	7.92E-05	2.22E-05	0.238	
ATDNA1T9A	Chr2:7907427-7907429	Chr2-7907428	TRANS	1.70E-09	NA	3.61E-07	0.172	AT2TE32765 (VANDAL16)
ATDNA1T9A	Chr3:14600022-14603445	Chr3-14603444	CIS	8.11E-22	1.93E-12	1.39E-10	0.441	
ATDNA1T9A	Chr3:18568631-18568633	Chr3-18568632	TRANS	1.35E-08	NA	1.67E-07	0.085	AT3G50060, AT3G50070, AT3G50080, AT3G50090, AT3G50100
ATDNA1T9A	Chr5:8186376-8212656	Chr5-8206873	CIS	1.89E-13	5.03E-09	2.30E-06	0.256	



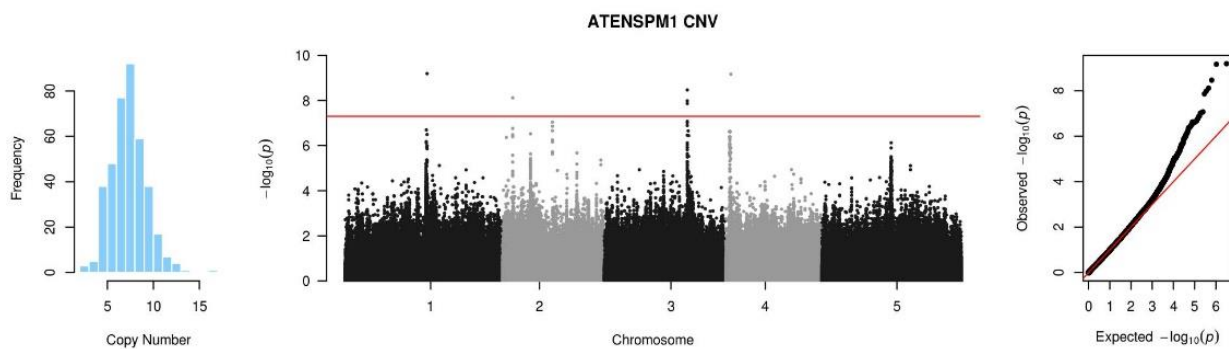
TE	GWAS associated interval	Leading SNP	Type of association	P-value			MAF	Candidate gene(s)
				Joined	Worldwide	Sweden		
ATDNAI26T9	Chr3:13244967-13245592	Chr3-13244968	C/S	5.53E-14	1.35E-07	3.18E-08	0.049	



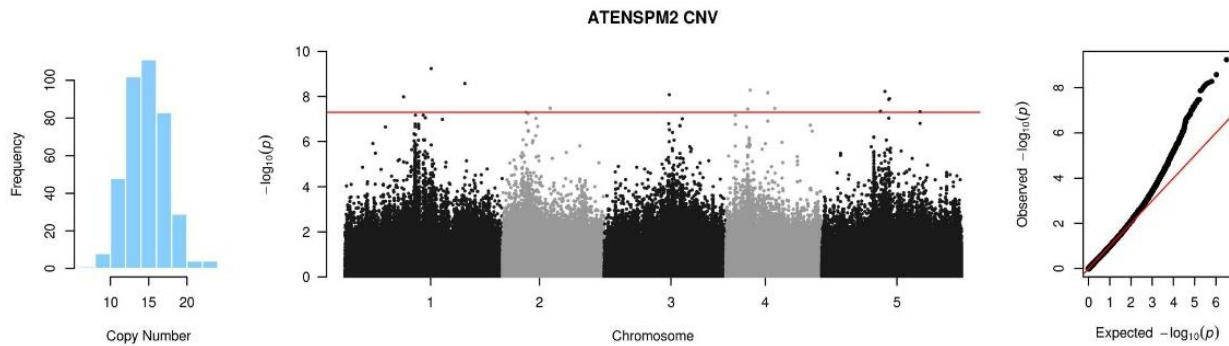
TE	GWAS associated interval	Leading SNP	Type of association	P-value			MAF	Candidate gene(s)
				Joined	Worldwide	Sweden		
ATDNAI27T9B	Chr3:15617514-15642531	Chr3-5699617	TRANS	2.67E-08	9.60E-07	NA	0.069	AT3G16700, AT3G16710, AT3G16712, AT3G16720, AT3G16730, AT3G16740, AT3G16750, AT3G16760, AT3G16770, AT3G16780, AT3G16785
ATDNAI27T9B	Chr3:5699616-5707384	Chr3-15617515	C/S	1.24E-08	3.55E-05	1.92E-04	0.326	



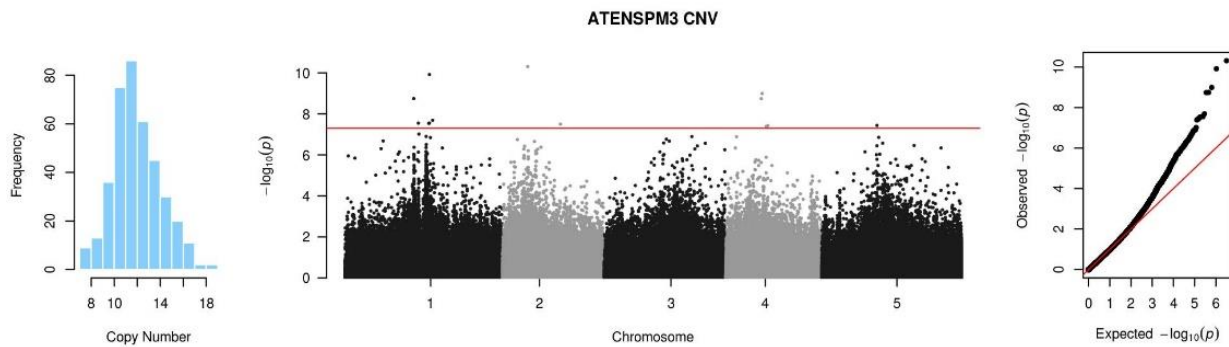
TE	GWAS associated interval	Leading SNP	Type of association	P-value			MAF	Candidate gene(s)
				Joined	Worldwide	Sweden		
ATDNAI27T9C	Chr2:7907427-7907429	Chr2-7907428	TRANS	3.32E-09	NA	5.06E-07	0.172	AT2G18160, AT2G18162, AT2G18170, AT2G18180, AT2G18190
ATDNAI27T9C	Chr3:14600022-14600024	Chr3-14600023	TRANS	2.47E-11	4.57E-06	6.48E-07	0.285	AT3G42473, AT3G42475
ATDNAI27T9C	Chr4:7524860-7526558	Chr4-7526557	CIS	7.75E-10	1.33E-07	4.76E-05	0.008	
ATDNAI27T9C	Chr4:8141395-8141397	Chr4-8141396	TRANS	2.92E-08	3.21E-05	6.42E-05	0.177	AT4G14140 (MET2a)



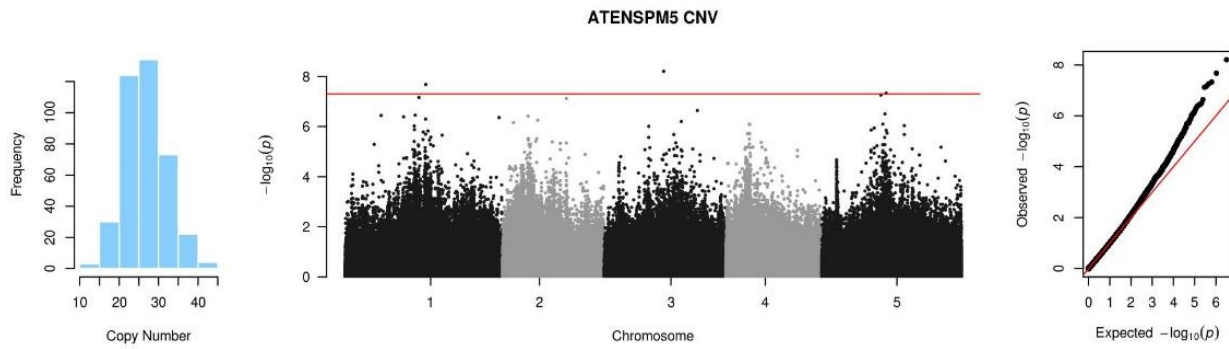
TE	GWAS associated interval	Leading SNP	Type of association	P-value			MAF	Candidate gene(s)
				Joined	Worldwide	Sweden		
ATENSPM1	Chr1:15867785-15867787	Chr1-15867786	CIS	6.43E-10	1.88E-05	1.44E-05	0.426	
ATENSPM1	Chr2:2006442-2006444	Chr2-2006443	TRANS	7.60E-09	1.88E-02	7.48E-07	0.121	AT2G05500, AT2G05510
ATENSPM1	Chr3:16050194-16050498	Chr3-16050497	TRANS	3.41E-09	NA	4.11E-08	0.167	AT3G44400
ATENSPM1	Chr4:1022686-1022688	Chr4-1022687	CIS	6.78E-10	1.76E-06	1.24E-04	0.313	



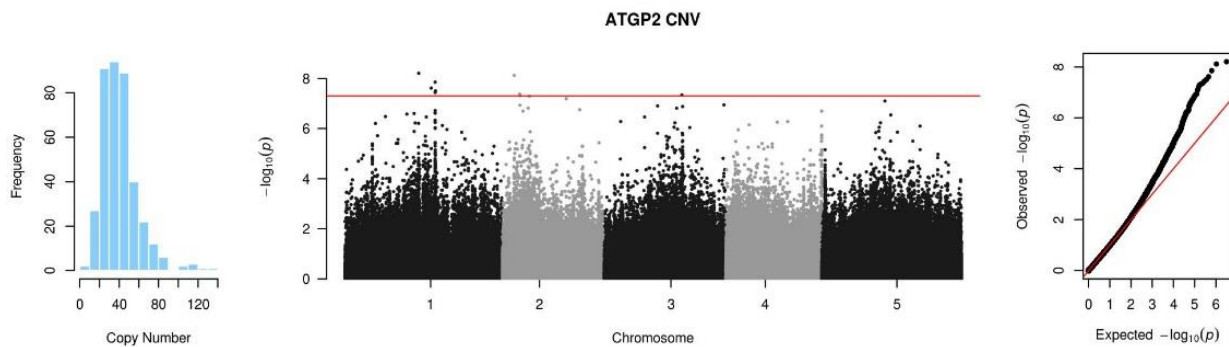
TE	GWAS associated interval	Leading SNP	Type of association	P-value			MAF	Candidate gene(s)
				Joined	Worldwide	Sweden		
ATENSPM2	Chr1:16675002-16675004	Chr1-16675003	TRANS	5.75E-10	5.97E-07	5.20E-03	0.359	AT1G43950 (ARF23)
ATENSPM2	Chr1:23181917-23181919	Chr1-23181918	TRANS	2.64E-09	1.56E-07	4.40E-02	0.195	AT1G62570, AT1G62580, AT1G62590, AT1G62600, AT1G62610, AT1G62620, AT1G62630
ATENSPM2	Chr3:12566674-12566676	Chr3-12566675	TRANS	8.39E-09	4.71E-07	NA	0.218	.
ATENSPM2	Chr4:4767946-4767948	Chr4-4767947	TRANS	5.25E-09	9.69E-08	2.00E-02	0.321	.
ATENSPM2	Chr4:8148250-8148252	Chr4-8148251	TRANS	6.85E-09	1.27E-08	NA	0.108	AT4G14140 (MET2a)
ATENSPM2	Chr5:12205883-12205885	Chr5-12205884	TRANS	5.99E-09	3.63E-08	1.42E-01	0.282	.
ATENSPM2	Chr5:12947984-13085062	Chr5-13085061	TRANS	1.26E-08	1.16E-06	4.61E-03	0.287	AT5G34780, AT5G34828, AT5G34829, AT5G34830, AT5G34869, AT5G34871



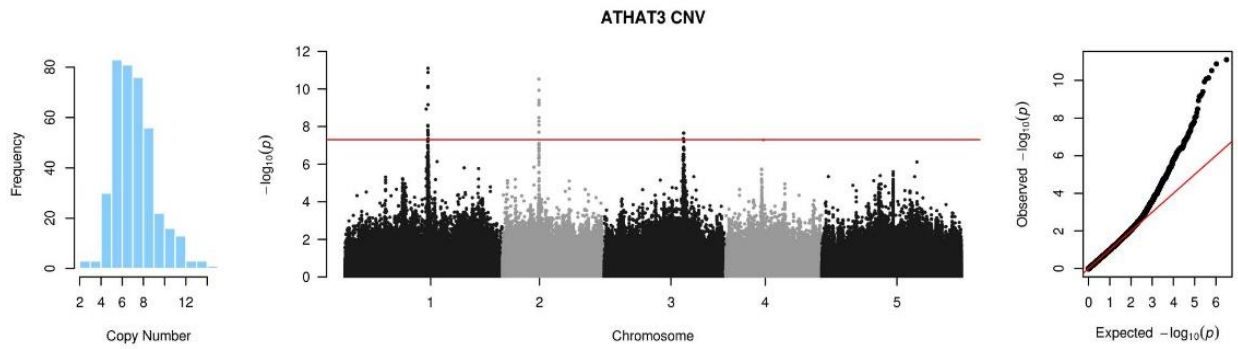
TE	GWAS associated interval	Leading SNP	Type of association	P-value			MAF	Candidate gene(s)
				Joined	Worldwide	Sweden		
ATENSPM3	Chr1:13288207-13288209	Chr1-13288208	TRANS	1.80E-09	5.09E-09	NA	0.277	AT1G35780
ATENSPM3	Chr1:14186622-14186624	Chr1-14186623	TRANS	2.81E-08	3.97E-07	1.79E-02	0.377	AT1G37150, AT1G37162
ATENSPM3	Chr1:16182880-16182882	Chr1-16182881	TRANS	2.85E-08	6.45E-07	4.20E-03	0.423	AT1G43040
ATENSPM3	Chr1:16344111-16344119	Chr1-16344112	TRANS	1.22E-10	2.92E-12	7.14E-01	0.310	AT1G43310
ATENSPM3	Chr1:16962663-16962665	Chr1-16962664	TRANS	2.04E-08	1.51E-07	6.56E-03	0.226	AT1G44900
ATENSPM3	Chr2:4906414-4906416	Chr2-4906415	CIS	4.88E-11	2.31E-07	1.79E-03	0.374	
ATENSPM3	Chr4:6880307-6880309	Chr4-6880308	TRANS	1.82E-09	5.90E-09	3.96E-02	0.479	AT4G11290, AT4G11300, AT4G11310, AT4G11320
ATENSPM3	Chr4:7062242-7062244	Chr4-7062243	TRANS	1.02E-09	4.21E-09	NA	0.223	AT4G11670, AT4G11680, AT4G11690, AT4G11700, AT4G11720, AT4G11730, AT4G11740



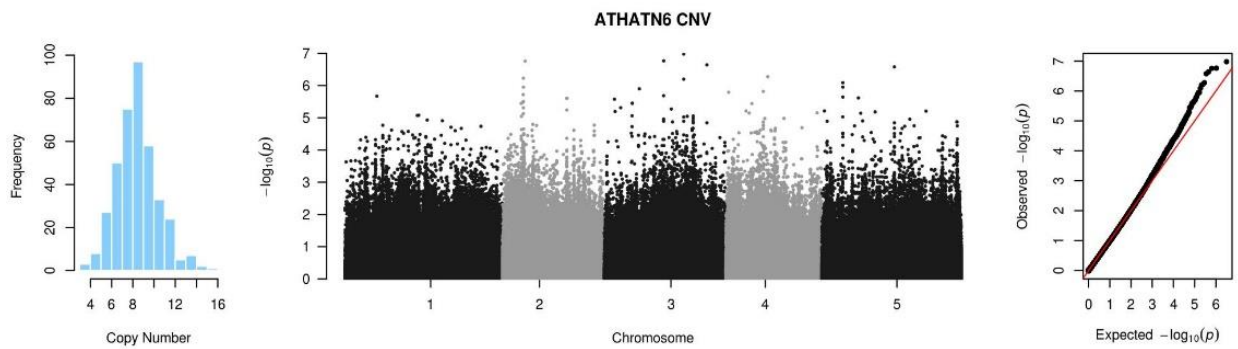
TE	GWAS associated interval	Leading SNP	Type of association	P-value			MAF	Candidate gene(s)
				Joined	Worldwide	Sweden		
ATENSPM5	Chr1:15612278-15612280	Chr1-15612279	TRANS	2.10E-08	3.11E-08	NA	0.187	AT1G41830
ATENSPM5	Chr3:11495299-11495301	Chr3-11495300	TRANS	6.22E-09	8.24E-10	NA	0.228	AT3G29644



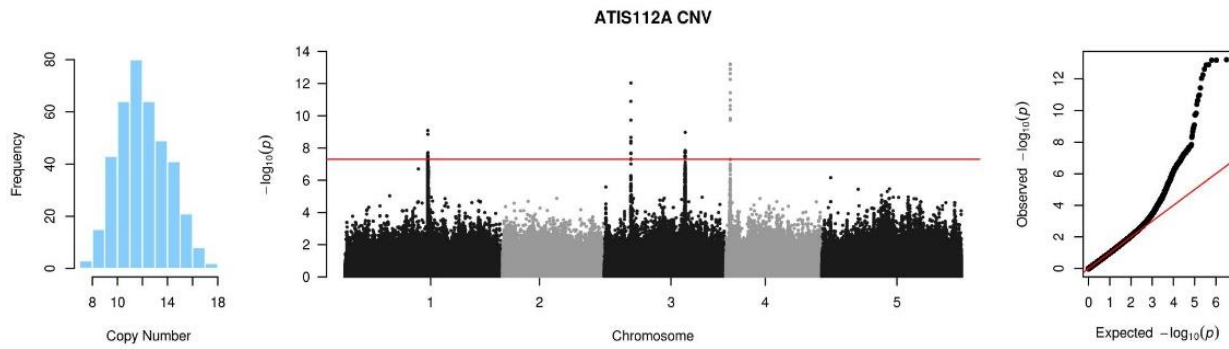
TE	GWAS associated interval	Leading SNP	Type of association	P-value			MAF	Candidate gene(s)
				Joined	Worldwide	Sweden		
ATGP2	Chr1:14263097-14263099	Chr1-14263098	TRANS	6.21E-09	1.25E-08	NA	0.244	.
ATGP2	Chr1:16675002-16675004	Chr1-16675003	TRANS	2.42E-08	6.62E-09	2.84E-01	0.359	AT1G43950 (ARF23)
ATGP2	Chr1:17440198-17440200	Chr1-17440199	TRANS	1.40E-08	8.34E-07	8.78E-04	0.064	AT1G47497, AT1G47500, AT1G47510, AT1G47497, AT1G47500, AT1G47510
ATGP2	Chr2:2290684-2290686	Chr2-2290685	TRANS	7.61E-09	2.78E-06	2.23E-03	0.295	AT2G05940



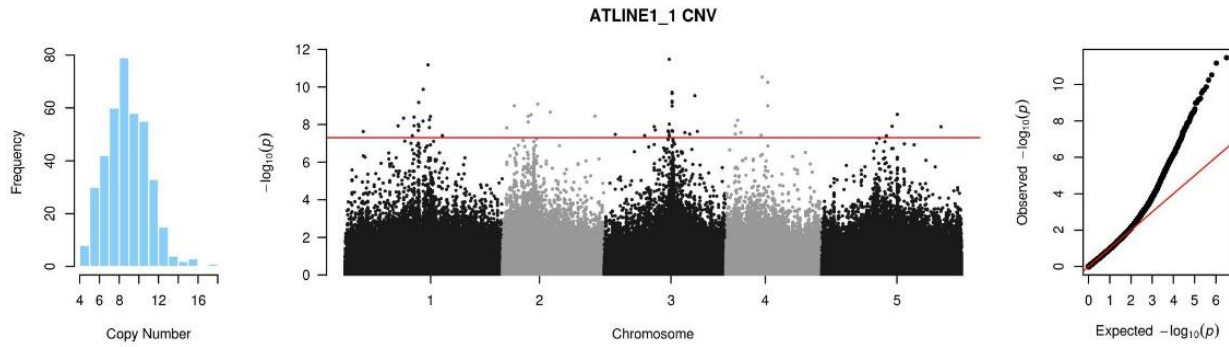
TE	GWAS associated interval	Leading SNP	Type of association	P-value			MAF	Candidate gene(s)
				Joined	Worldwide	Sweden		
ATHAT3	Chr1:16036245-16036886	Chr1-16036246	TRANS	8.67E-09	6.36E-06	4.88E-05	0.282	AT1G42680
ATHAT3	Chr1:16070455-16094668	Chr1-16071288	CIS	7.91E-12	5.48E-11	NA	0.121	
ATHAT3	Chr2:7066692-7073458	Chr2-7067625	CIS	2.98E-11	5.18E-06	1.21E-06	0.364	
ATHAT3	Chr3:15351283-15351287	Chr3-15351284	TRANS	2.23E-08	NA	1.09E-07	0.108	AT3G43420, AT3G43430, AT3G43431, AT3G43432



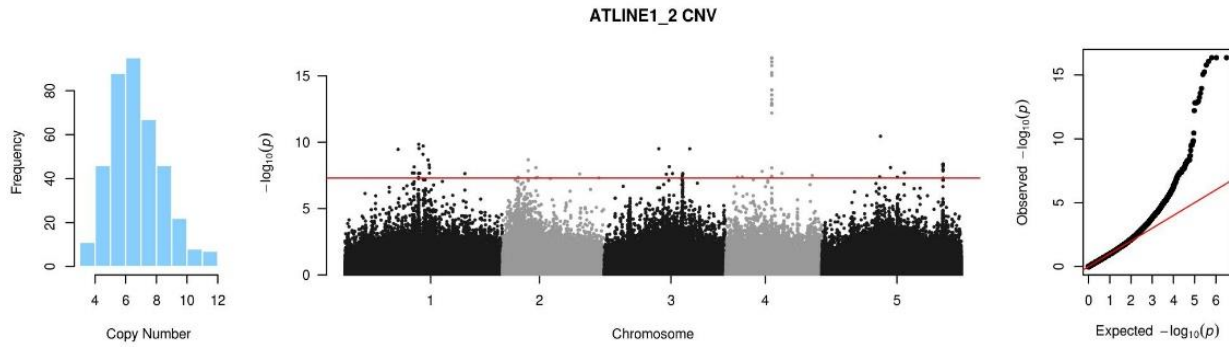
TE	GWAS associated interval	Leading SNP	Type of association	P-value			MAF	Candidate gene(s)
				Joined	Worldwide	Sweden		



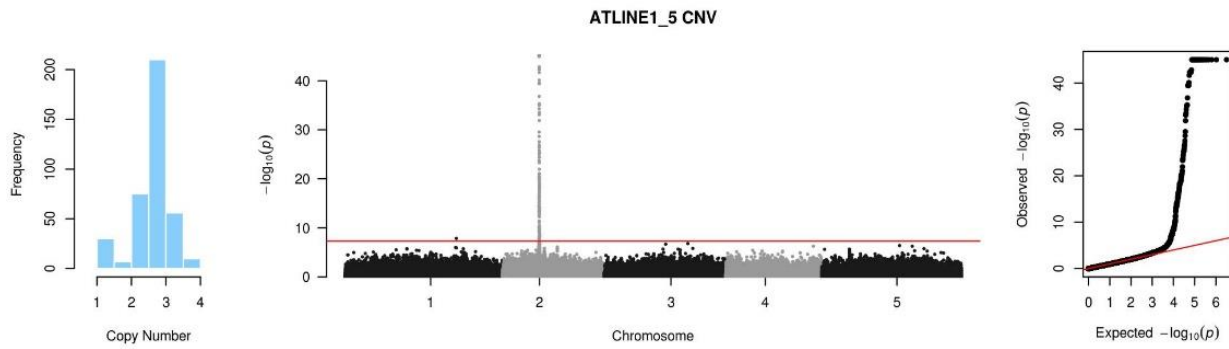
TE	GWAS associated interval	Leading SNP	Type of association	<i>P-value</i>			MAF	Candidate gene(s)
				Joined	Worldwide	Sweden		
ATIS112A	Chr1:15995694-16067310	Chr1-16031743	<i>CIS</i>	8.18E-10	8.97E-06	6.02E-06	0.336	
ATIS112A	Chr3:15617514-15642531	Chr3-5157268	<i>CIS</i>	9.19E-13	4.82E-08	1.41E-06	0.272	
ATIS112A	Chr3:5149758-5158701	Chr3-15642530	<i>CIS</i>	1.06E-09	1.70E-06	3.94E-04	0.436	
ATIS112A	Chr4:866297-871018	Chr4-866304	<i>CIS</i>	6.51E-14	3.51E-08	1.10E-06	0.369	



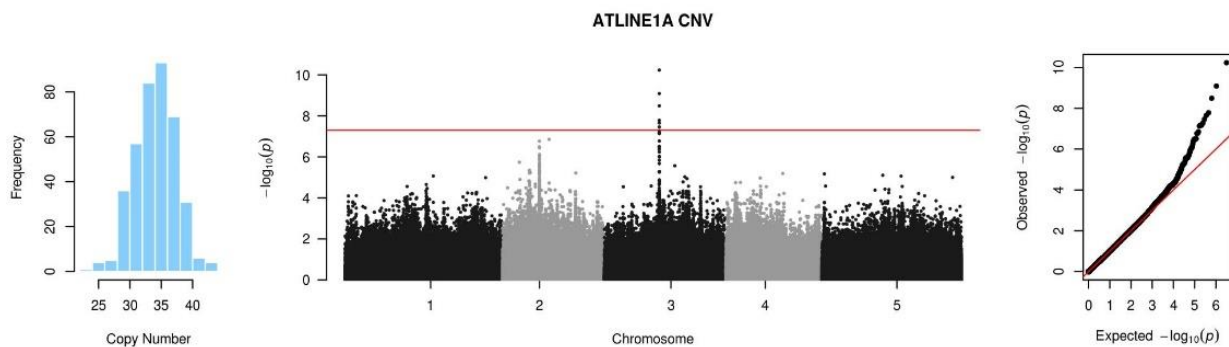
TE	GWAS associated interval	Leading SNP	Type of association	P-value			MAF	Candidate gene(s)
				Joined	Worldwide	Sweden		
ATLINE1_1	Chr1:3527270-3527272	Chr1-3527271	TRANS	2.35E-08	1.22E-05	5.89E-05	0.121	AT1G10640, AT1G10650, AT1G10652, AT1G10657, AT1G10660, AT1G10670
ATLINE1_1	Chr1:10280562-10280564	Chr1-10280563	TRANS	1.17E-08	2.06E-09	NA	0.256	AT1G29350, AT1G29355, AT1G29357, AT1G29370, AT1G29380, AT1G29390, AT1G29395, AT1G29400
ATLINE1_1	Chr1:11339021-11339023	Chr1-11339022	TRANS	4.56E-09	5.86E-07	NA	0.241	AT1G31650, AT1G31660, AT1G31670, AT1G31690
ATLINE1_1	Chr1:13354892-13365991	Chr1-13354893	TRANS	4.00E-09	1.33E-07	2.06E-03	0.441	AT1G35900, AT1G35910
ATLINE1_1	Chr1:14186622-14186631	Chr1-14186630	TRANS	9.81E-09	3.12E-10	1.34E-01	0.372	AT1G37150, AT1G37162
ATLINE1_1	Chr1:14263097-14313946	Chr1-14263098	TRANS	6.65E-10	1.95E-09	NA	0.244	AT1G38065, AT1G38131
ATLINE1_1	Chr1:15087421-16344119	Chr1-16073092	TRANS	6.68E-12	4.31E-10	NA	0.228	.
ATLINE1_1	Chr1:16518106-16518108	Chr1-16518107	TRANS	3.77E-09	1.02E-08	NA	0.397	AT1G43730
ATLINE1_1	Chr2:859602-859604	Chr2-859603	TRANS	1.49E-08	2.10E-05	2.80E-03	0.497	AT2G02930, AT2G02950, AT2G02955, AT2G02960, AT2G02970, AT2G02980
ATLINE1_1	Chr2:2304138-2304140	Chr2-2304139	TRANS	1.00E-09	5.01E-10	2.09E-01	0.374	AT2G05970
ATLINE1_1	Chr2:4999266-4999451	Chr2-4999267	TRANS	7.35E-09	6.20E-08	NA	0.105	AT2G12400
ATLINE1_1	Chr2:5558376-5558378	Chr2-5558377	TRANS	3.01E-09	1.30E-07	1.25E-02	0.362	AT2G13370
ATLINE1_1	Chr2:6822456-6822458	Chr2-6822457	TRANS	8.04E-10	1.88E-10	NA	0.328	AT2G15620, AT2G15630, AT2G15640, AT2G15660, AT2G15670, AT2G15680, AT2G15690
ATLINE1_1	Chr2:9281325-9281327	Chr2-9281326	TRANS	2.18E-09	8.82E-09	NA	0.182	AT2G21710, AT2G21720, AT2G21725, AT2G21727, AT2G21730, AT2G21740, AT2G21750, AT2G21760, AT2G21770, AT2G21780
ATLINE1_1	Chr2:17904473-17904475	Chr2-17904474	TRANS	3.57E-09	3.11E-07	2.18E-03	0.077	AT2G43018, AT2G43020, AT2G43030, AT2G43040, AT2G43050, AT2G43060, AT2G43070
ATLINE1_1	Chr3:9643029-9643031	Chr3-9643030	TRANS	1.29E-08	2.95E-08	4.83E-03	0.487	AT3G26290, AT3G26300, AT3G26310, AT3G26320, AT3G26330, AT3G26340
ATLINE1_1	Chr3:9859836-9859838	Chr3-9859837	TRANS	1.95E-08	1.98E-05	3.05E-05	0.474	AT3G26780, AT3G26782, AT3G26790, AT3G26800, AT3G26810, AT3G26812
ATLINE1_1	Chr3:12354058-12354060	Chr3-12354059	TRANS	2.18E-08	2.92E-08	6.09E-03	0.438	AT3G30720, AT3G30725, AT3G30730
ATLINE1_1	Chr3:12462649-12566676	Chr3-12536058	TRANS	3.37E-12	2.11E-10	3.02E-02	0.256	AT3G30778, AT3G30805, AT3G30820
ATLINE1_1	Chr3:13099797-13104190	Chr3-13099798	CIS	6.54E-10	1.71E-05	8.91E-06	0.395	
ATLINE1_1	Chr3:13246999-13247001	Chr3-13247000	TRANS	2.29E-08	3.75E-04	8.69E-06	0.341	AT3G32280
ATLINE1_1	Chr3:15588932-15588934	Chr3-15588933	TRANS	2.66E-08	1.11E-06	NA	0.151	AT3G43682
ATLINE1_1	Chr3:17519634-17519636	Chr3-17519635	TRANS	2.94E-10	5.92E-10	NA	0.269	AT3G47510, AT3G47520, AT3G47530, AT3G47540, AT3G47543, AT3G47550, AT3G47560, AT3G47570
ATLINE1_1	Chr3:17978865-17978867	Chr3-17978866	TRANS	2.33E-08	3.50E-07	NA	0.210	AT3G48515, AT3G48520, AT3G48530
ATLINE1_1	Chr4:1891430-1891432	Chr4-1891431	TRANS	1.15E-08	1.10E-08	4.33E-01	0.262	AT4G03960, AT4G03965
ATLINE1_1	Chr4:2298769-2298771	Chr4-2298770	TRANS	5.88E-09	7.50E-09	NA	0.310	AT4G04570, AT4G04580
ATLINE1_1	Chr4:2960759-2960761	Chr4-2960760	TRANS	2.66E-08	2.79E-08	NA	0.144	AT4G05612
ATLINE1_1	Chr4:7062242-7062244	Chr4-7062243	TRANS	2.97E-11	1.43E-11	NA	0.223	AT4G11670, AT4G11680, AT4G11690, AT4G11700, AT4G11720, AT4G11730, AT4G11740
ATLINE1_1	Chr4:8148250-8148313	Chr4-8148312	TRANS	5.72E-11	7.55E-11	NA	0.226	AT4G14140 (MET2a)
ATLINE1_1	Chr5:13603137-13603139	Chr5-13603138	TRANS	1.22E-08	4.04E-09	2.49E-02	0.387	AT5G35375, AT5G35380, AT5G35390, AT5G35400, AT5G35405, AT5G35407
ATLINE1_1	Chr5:14590846-14590848	Chr5-14590847	TRANS	2.86E-09	1.00E-07	1.76E-02	0.149	AT5G36940, AT5G36950, AT5G36960, AT5G36960, AT5G36960, AT5G36960
ATLINE1_1	Chr5:23050034-23050036	Chr5-23050035	TRANS	1.31E-08	1.68E-07	1.38E-03	0.292	AT5G56960, AT5G56970, AT5G56975, AT5G56980



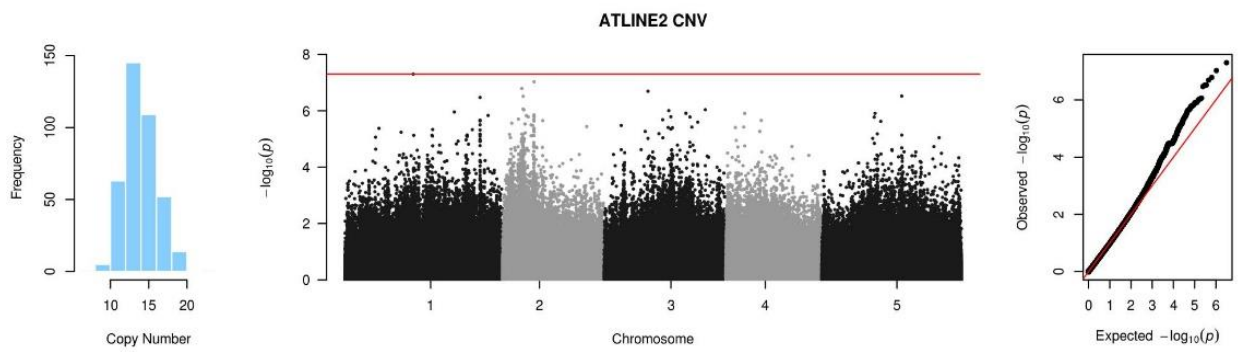
TE	GWAS associated interval	Leading SNP	Type of association	P-value			MAF	Candidate gene(s)
				Joined	Worldwide	Sweden		
ATLINE1_2	Chr1:10280562-10280564	Chr1-10280563	TRANS	3.50E-10	5.19E-11	NA	0.256	AT1G29350, AT1G29355, AT1G29357, AT1G29370, AT1G29380, AT1G29390, AT1G29395, AT1G29400
ATLINE1_2	Chr1:13013843-13013845	Chr1-13013844	TRANS	2.08E-08	3.80E-09	2.00E-01	0.297	AT1G35375, AT1G35400
ATLINE1_2	Chr1:13381001-13401451	Chr1-13381002	TRANS	7.29E-09	1.52E-09	NA	0.218	.
ATLINE1_2	Chr1:14225247-16344119	Chr1-14263098	TRANS	1.42E-10	1.05E-10	NA	0.244	.
ATLINE1_2	Chr1:23181917-23181919	Chr1-23181918	TRANS	2.30E-08	1.81E-06	4.37E-02	0.195	AT1G62570, AT1G62580, AT1G62590, AT1G62600, AT1G62610, AT1G62620, AT1G62630
ATLINE1_2	Chr2:4997864-4999451	Chr2-4999450	TRANS	2.10E-09	1.38E-11	NA	0.131	AT2G12400
ATLINE1_2	Chr2:6477378-6477380	Chr2-6477379	TRANS	8.13E-09	6.46E-11	2.74E-01	0.390	AT2G15000, AT2G15010
ATLINE1_2	Chr2:14932292-14932294	Chr2-14932293	TRANS	2.43E-08	6.27E-08	NA	0.392	AT2G35520, AT2G35530, AT2G35540, AT2G35550, AT2G35580, AT2G35585, AT2G35600
ATLINE1_2	Chr3:10542191-10542193	Chr3-10542192	TRANS	3.08E-10	2.25E-07	6.95E-05	0.441	AT3G28243, AT3G28250, AT3G28260, AT3G28270, AT3G28280, AT3G28290, AT3G28291
ATLINE1_2	Chr3:12001880-12001882	Chr3-12001881	TRANS	2.56E-08	7.67E-11	6.58E-01	0.233	AT3G30387, AT3G30391
ATLINE1_2	Chr3:12566674-12566676	Chr3-12566675	TRANS	6.91E-09	2.67E-09	NA	0.218	.
ATLINE1_2	Chr3:13199634-13199636	Chr3-13199635	TRANS	2.29E-08	9.21E-07	NA	0.315	.
ATLINE1_2	Chr3:15178231-15178298	Chr3-15178232	CIS	2.48E-08	6.54E-05	1.14E-04	0.090	.
ATLINE1_2	Chr3:16511648-16511650	Chr3-16511649	TRANS	3.10E-10	1.07E-09	3.29E-02	0.200	AT3G45100, AT3G45110, AT3G45130
ATLINE1_2	Chr4:7062242-7062244	Chr4-7062243	TRANS	1.57E-08	8.76E-10	NA	0.223	AT4G11670, AT4G11680, AT4G11690, AT4G11700, AT4G11720, AT4G11730, AT4G11740
ATLINE1_2	Chr4:10898110-10898112	Chr4-10898111	TRANS	2.23E-08	6.07E-11	4.54E-02	0.249	AT4G20140, AT4G20150, AT4G20160, AT4G20170, AT4G20190
ATLINE1_2	Chr5:11344169-11344171	Chr5-11344170	TRANS	3.54E-11	2.05E-10	1.02E-02	0.408	.
ATLINE1_2	Chr5:13289118-13289120	Chr5-13289119	TRANS	8.00E-09	2.54E-06	NA	0.059	.
ATLINE1_2	Chr5:15962104-15962106	Chr5-15962105	TRANS	1.99E-08	2.96E-07	3.04E-02	0.156	AT5G39860, AT5G39865, AT5G39870, AT5G39880



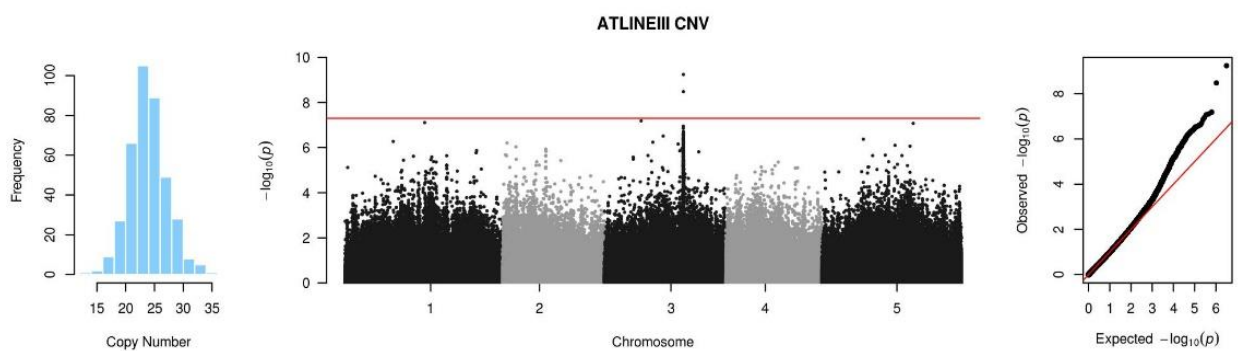
TE	GWAS associated interval	Leading SNP	Type of association	P-value			MAF	Candidate gene(s)
				Joined	Worldwide	Sweden		
ATLINE1_5	Chr1:21540447-21540449	Chr1-21540448	TRANS	1.35E-08	6.54E-05	8.67E-05	0.297	AT1G58150, AT1G58160, AT1G58170, AT1G58180, AT1G58190, AT1G58200
ATLINE1_5	Chr2:7057592-7215595	Chr2-7106640	CIS	8.97E-46	1.84E-35	NA	0.082	



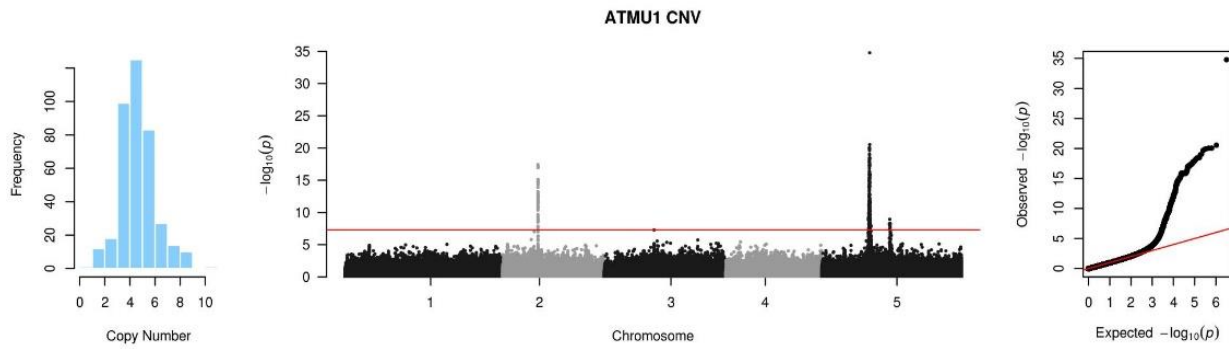
TE	GWAS associated interval	Leading SNP	Type of association	P-value			MAF	Candidate gene(s)
				Joined	Worldwide	Sweden		
ATLINE1A	Chr3:10642015-10645602	Chr3-10642086	C/S	5.84E-11	3.18E-08	4.47E-04	0.459	



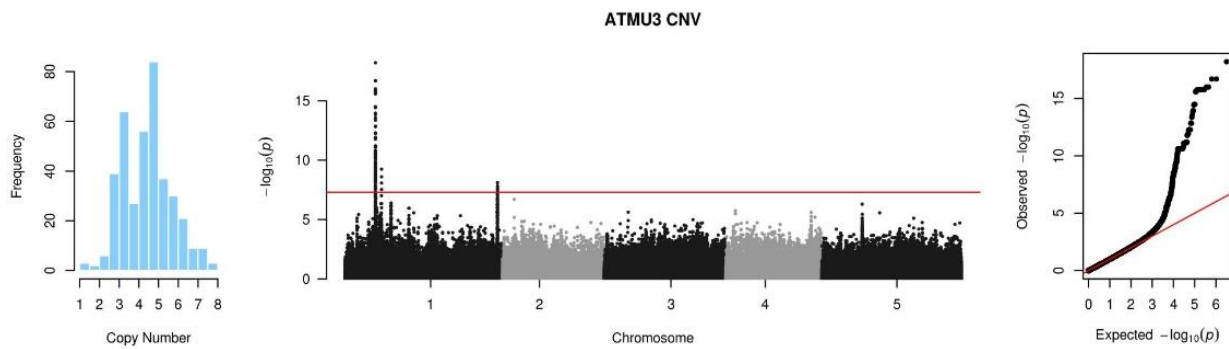
TE	GWAS associated interval	Leading SNP	Type of association	P-value			MAF	Candidate gene(s)
				Joined	Worldwide	Sweden		



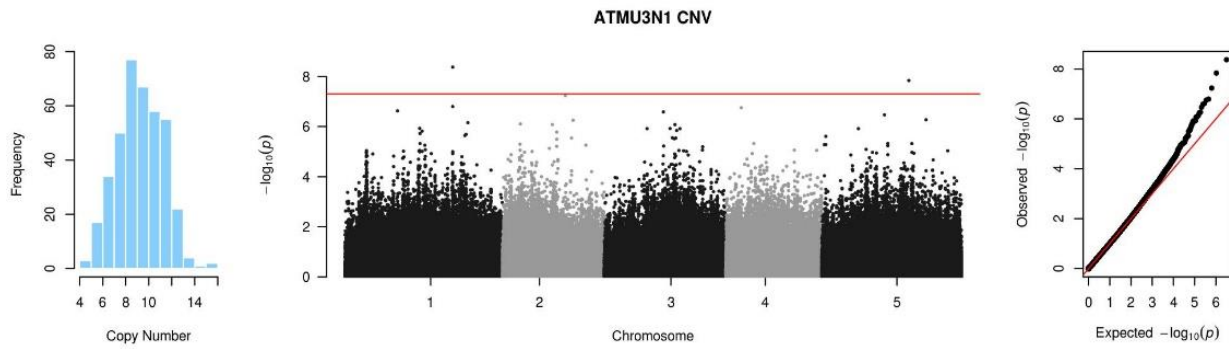
TE	GWAS associated interval	Leading SNP	Type of association	P-value			MAF	Candidate gene(s)
				Joined	Worldwide	Sweden		
ATLINEIII	Chr3:15295284-15295304	Chr3-15295303	TRANS	5.73E-10	9.29E-07	1.25E-04	0.282	AT3G43340



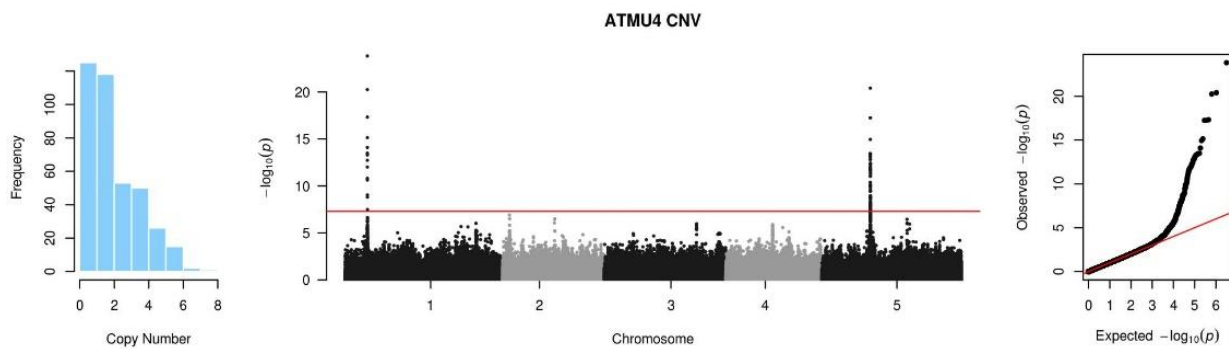
TE	GWAS associated interval	Leading SNP	Type of association	P-value			MAF	Candidate gene(s)
				Joined	Worldwide	Sweden		
ATMU1	Chr2:6874717-6891586	Chr2-6882611	CIS	3.75E-18	4.16E-13	4.94E-05	0.100	
ATMU1	Chr5:9047986-9522014	Chr5-9260607	CIS	1.67E-35	3.85E-20	8.24E-18	0.105	
ATMU1	Chr5:13113294-13230580	Chr5-13113295	TRANS	5.78E-09	9.67E-08	NA	0.051	AT5G34850, AT5G34870, AT5G34881, AT5G34882, AT5G34883, AT5G34885, AT5G34887, AT5G34905, AT5G34908, AT5G34930, AT5G34940



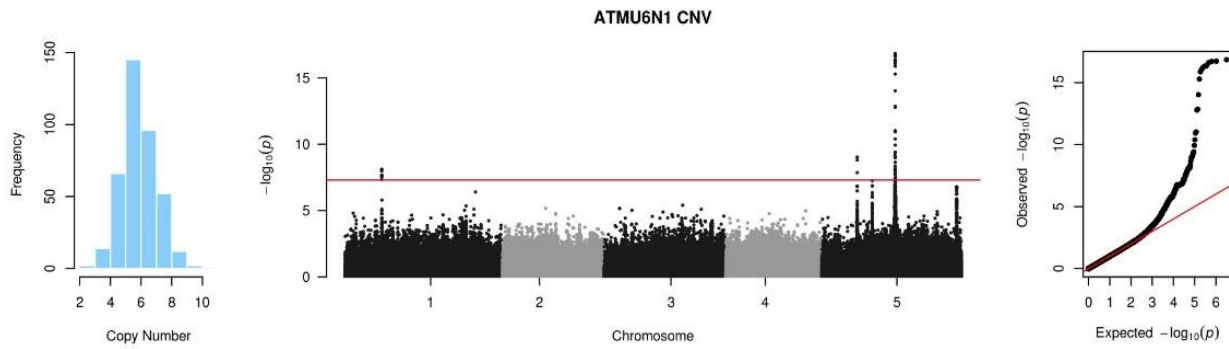
TE	GWAS associated interval	Leading SNP	Type of association	P-value			MAF	Candidate gene(s)
				Joined	Worldwide	Sweden		
ATMU3	Chr1:7082827-7084454	Chr1-5905999	CIS	6.17E-19	3.21E-06	4.68E-16	0.195	
ATMU3	Chr1:29472077-29482991	Chr1-7082828	TRANS	5.59E-10	3.90E-07	NA	0.100	AT1G20410
ATMU3	Chr1:5876536-5922541	Chr1-29472078	CIS	7.91E-09	5.16E-06	1.31E-03	0.128	



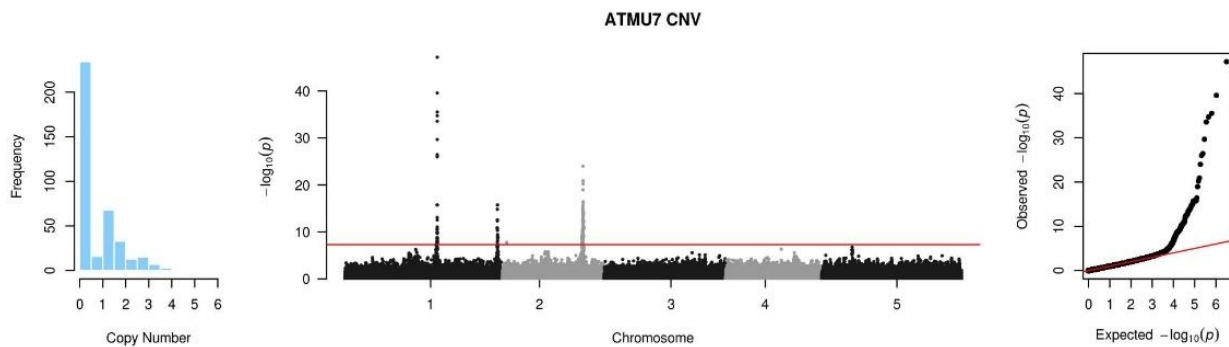
TE	GWAS associated interval	Leading SNP	Type of association	P-value			MAF	Candidate gene(s)
				Joined	Worldwide	Sweden		
ATMU3N1	Chr1:20822319-20822321	Chr1-20822320	TRANS	4.24E-09	NA	4.27E-06	0.382	AT1G55690, AT1G55700, AT1G55710, AT1G55720, AT1G55730
ATMU3N1	Chr5:16828813-16828815	Chr5-16828814	TRANS	1.45E-08	NA	6.87E-06	0.177	AT5G42060, AT5G42070, AT5G42080, AT5G42090, AT5G42092, AT5G42100, AT5G42110, AT5G42120, AT5G42130, AT5G42140



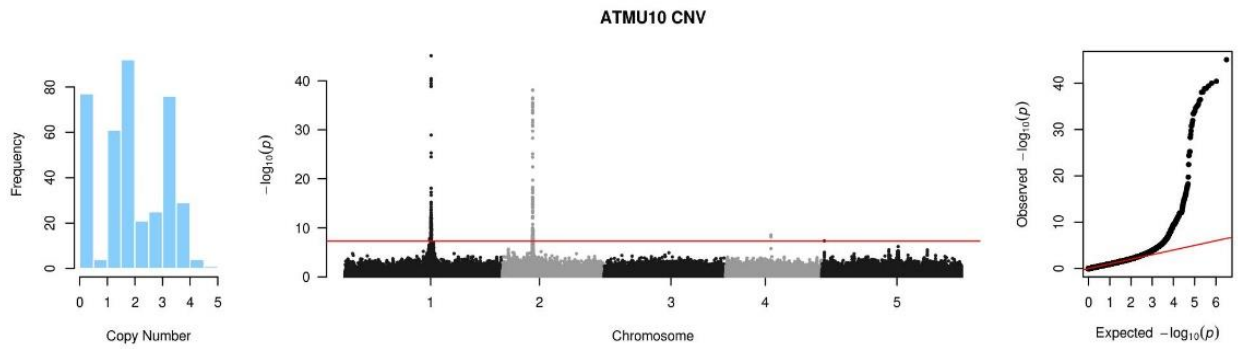
TE	GWAS associated interval	Leading SNP	Type of association	P-value			MAF	Candidate gene(s)
				Joined	Worldwide	Sweden		
ATMU4	Chr1:4330246-4336252	Chr1-4332459	C/S	1.50E-24	4.70E-18	1.16E-08	0.423	
ATMU4	Chr5:9359695-9398879	Chr5-9374600	C/S	3.90E-21	1.17E-13	1.02E-09	0.233	



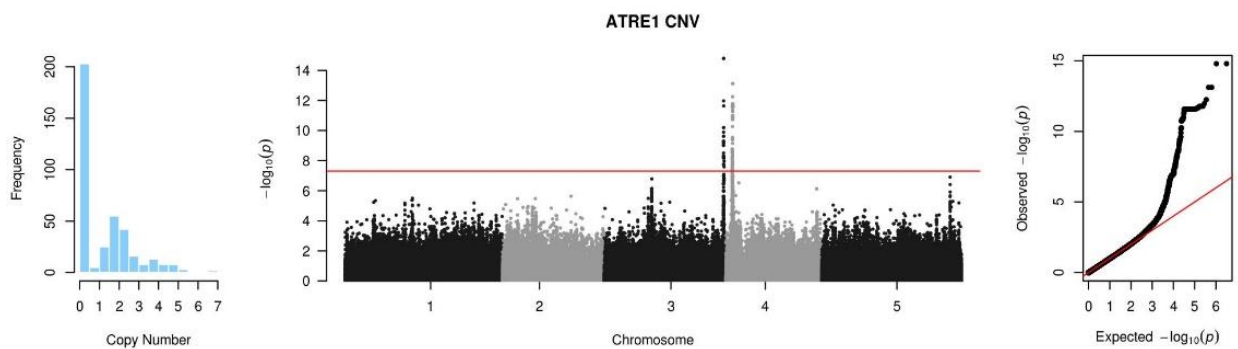
TE	GWAS associated interval	Leading SNP	Type of association	P-value			MAF	Candidate gene(s)
				Joined	Worldwide	Sweden		
ATMU6N1	Chr1:7112320-7126770	Chr1-7121312	C/S	7.92E-09	3.10E-06	4.33E-04	0.051	
ATMU6N1	Chr5:6837888-6840327	Chr5-6837889	C/S	9.27E-10	1.16E-08	8.46E-04	0.308	
ATMU6N1	Chr5:14156862-14241288	Chr5-14196547	C/S	4.54E-17	1.63E-09	1.14E-09	0.362	



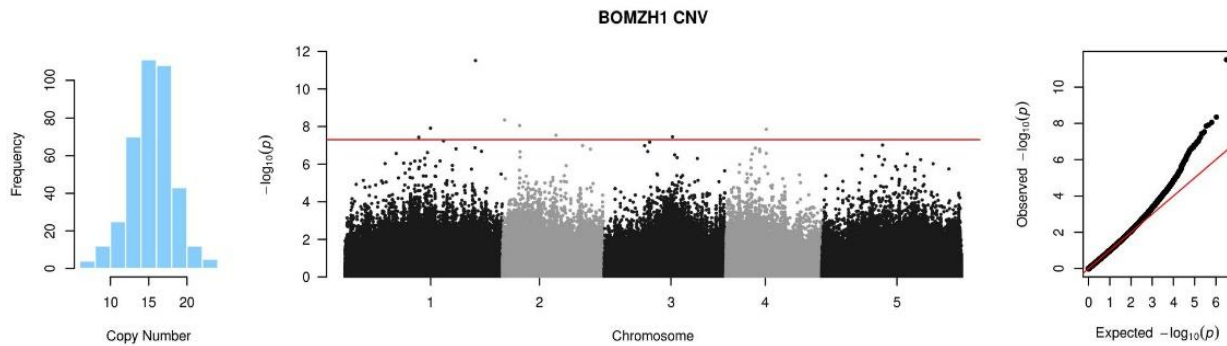
TE	GWAS associated interval	Leading SNP	Type of association	P-value			MAF	Candidate gene(s)
				Joined	Worldwide	Sweden		
ATMU7	Chr1:17827343-17850172	Chr1-17843917	C/S	6.51E-48	1.04E-30	7.78E-20	0.195	
ATMU7	Chr1:29606534-29606536	Chr1-29606535	TRANS	1.49E-09	NA	1.45E-04	0.059	AT1G78690, AT1G78700, AT1G78710, AT1G78720, AT1G78730, AT1G78740, AT1G78750, AT1G78760
ATMU7	Chr2:853711-853718	Chr2-853712	C/S	1.84E-08	9.63E-06	6.79E-04	0.062	
ATMU7	Chr2:15400354-15688272	Chr2-15595243	C/S	1.02E-10	NA	8.13E-07	0.115	



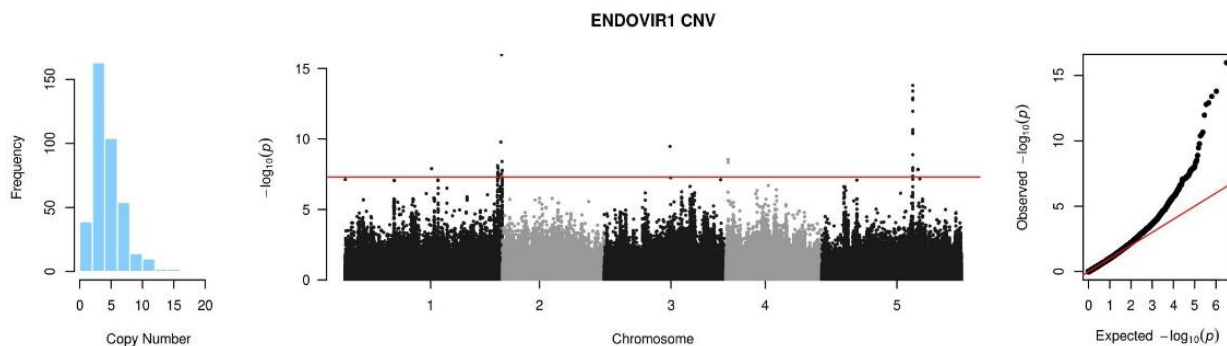
TE	GWAS associated interval	Leading SNP	Type of association	P-value			MAF	Candidate gene(s)
				Joined	Worldwide	Sweden		
ATMU10	Chr1:16647700-16712103	Chr1-16660193	CIS	8.04E-46	2.21E-24	1.35E-24	0.390	
ATMU10	Chr2:5835416-5914331	Chr2-5861365	CIS	8.62E-39	4.42E-21	1.17E-18	0.441	
ATMU10	Chr4:8780515-8780544	Chr4-8780516	TRANS	2.81E-09	5.31E-05	7.00E-05	0.200	AT4G15360, AT4G15370, AT4G15380



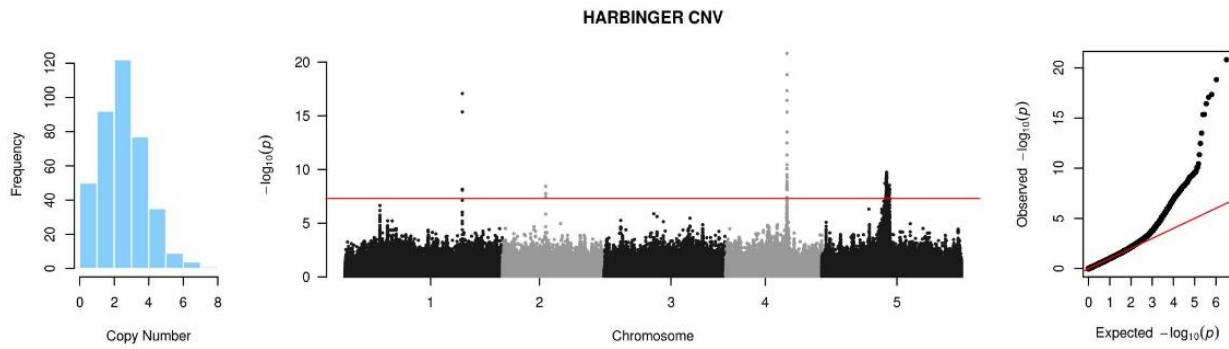
TE	GWAS associated interval	Leading SNP	Type of association	P-value			MAF	Candidate gene(s)
				Joined	Worldwide	Sweden		
ATRE1	Chr3:23050888-23163122	Chr3-23079848	TRANS	1.61E-15	2.17E-11	1.04E-05	0.121	Telomere
ATRE1	Chr4:1259349-1373555	Chr4-1363394	TRANS	7.59E-14	5.83E-12	1.70E-04	0.182	Telomere



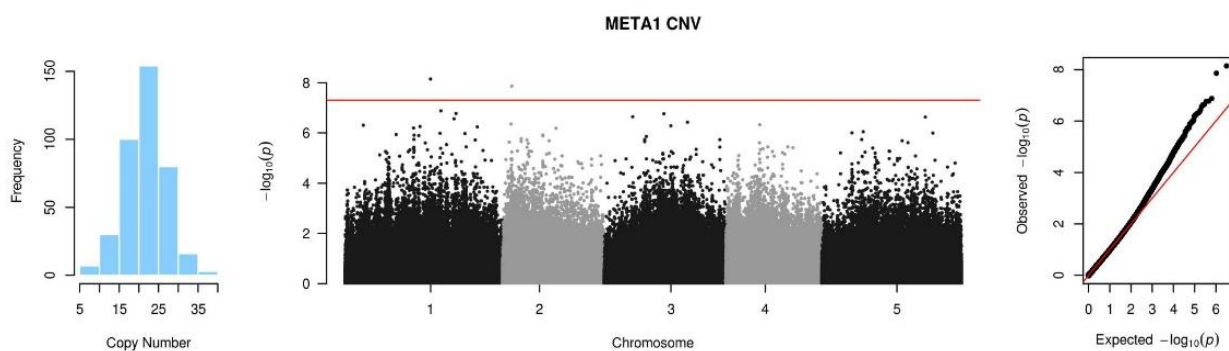
TE	GWAS associated interval	Leading SNP	Type of association	P-value			MAF	Candidate gene(s)
				Joined	Worldwide	Sweden		
BOMZH1	Chr1:16538277-16538279	Chr1-16538278	TRANS	1.20E-08	NA	1.99E-07	0.077	AT1G43760, AT1G43765
BOMZH1	Chr1:25245332-25245334	Chr1-25245333	TRANS	3.10E-12	NA	2.00E-09	0.136	AT1G67390
BOMZH1	Chr2:425001-425003	Chr2-425002	TRANS	4.49E-09	NA	1.88E-06	0.056	AT2G01905, AT2G01910, AT2G01913, AT2G01918, AT2G01920, AT2G01930, AT2G01940
BOMZH1	Chr2:3336992-3336994	Chr2-3336993	TRANS	8.84E-09	NA	NA	0.449	AT2G07689, AT2G07691, AT2G07692, AT2G07695, AT2G07755, AT2G07792
BOMZH1	Chr2:10367486-10367488	Chr2-10367487	TRANS	2.87E-08	NA	3.57E-06	0.105	AT2G24340, AT2G24350, AT2G24360, AT2G24370, AT2G24380, AT2G24390, AT2G24395
BOMZH1	Chr4:7861176-7861178	Chr4-7861177	TRANS	1.39E-08	NA	6.15E-06	0.054	AT4G13500, AT4G13505, AT4G13510, AT4G13520, AT4G13530, AT4G13540, AT4G13550



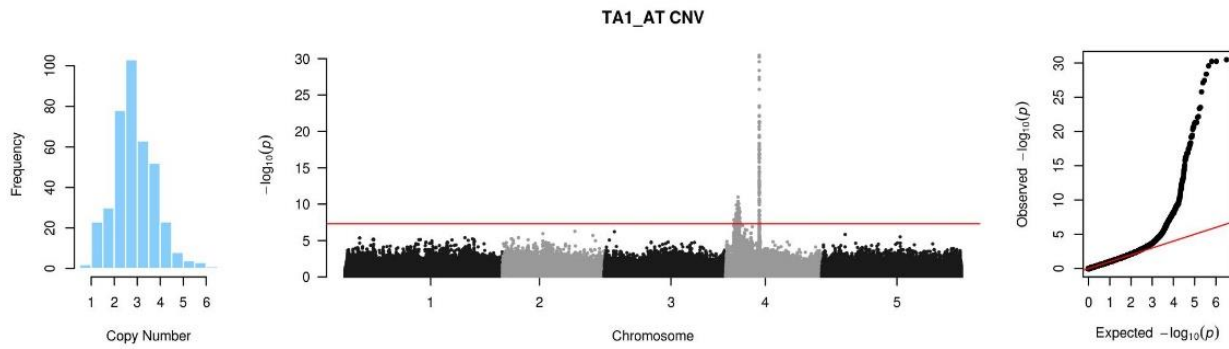
TE	GWAS associated interval	Leading SNP	Type of association	P-value			MAF	Candidate gene(s)
				Joined	Worldwide	Sweden		
ENDOVIR1	Chr1:16742503-16742505	Chr1-16742504	TRANS	1.27E-08	NA	7.46E-09	0.105	AT1G44050
ENDOVIR1	Chr1:29491625-29610696	Chr1-29491626	TRANS	7.81E-09	NA	1.00E-07	0.054	Centromere
ENDOVIR1	Chr1:30145534-30424738	Chr1-30145535	TRANS	1.67E-10	NA	4.98E-10	0.105	Centromere
ENDOVIR1	Chr3:12711190-12711192	Chr3-12711191	TRANS	3.39E-10	NA	2.07E-07	0.087	AT3G31350
ENDOVIR1	Chr4:482154-489967	Chr4-482155	TRANS	4.60E-09	NA	2.54E-06	0.092	AT4G01090, AT4G01100, AT4G01110, AT4G01120, AT4G01130, AT4G01140, AT4G01150, AT4G01160, AT4G01170
ENDOVIR1	Chr5:17598754-17603687	Chr5-17603169	CIS	4.02E-14	1.16E-10	7.69E-07	0.349	
ENDOVIR1	Chr5:18585594-18591343	Chr5-18585595	TRANS	1.46E-08	NA	1.94E-05	0.059	AT5G45800, AT5G45810, AT5G45820, AT5G45830, AT5G45840, AT5G45850



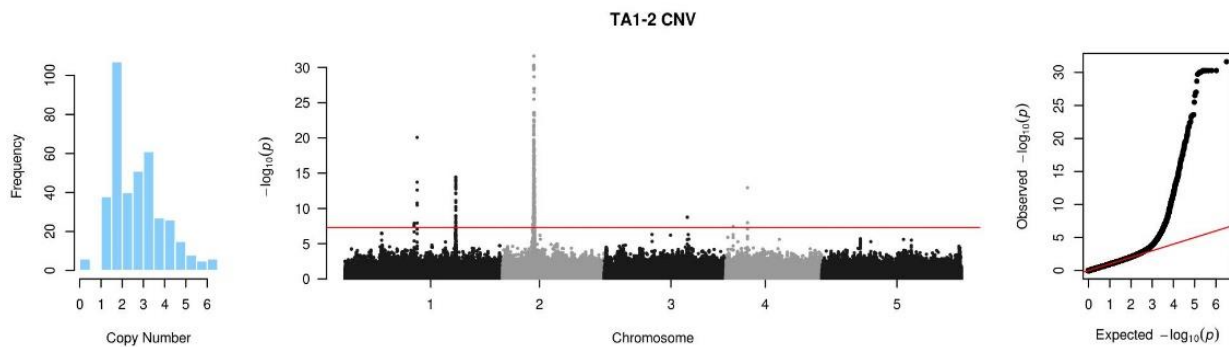
TE	GWAS associated interval	Leading SNP	Type of association	P-value			MAF	Candidate gene(s)
				Joined	Worldwide	Sweden		
HARBINGER	Chr1:22695813-22698956	Chr1-22698955	C/S	6.77E-09	NA	3.33E-06	0.362	
HARBINGER	Chr2:8379751-8381366	Chr2-8381365	C/S	3.67E-09	4.17E-06	6.75E-04	0.482	
HARBINGER	Chr4:11828799-11840680	Chr4-11832740	C/S	1.54E-21	3.86E-09	7.78E-14	0.462	
HARBINGER	Chr5:12192380-13075605	Chr5-12443314	C/S	6.79E-10	2.25E-09	4.97E-04	0.274	



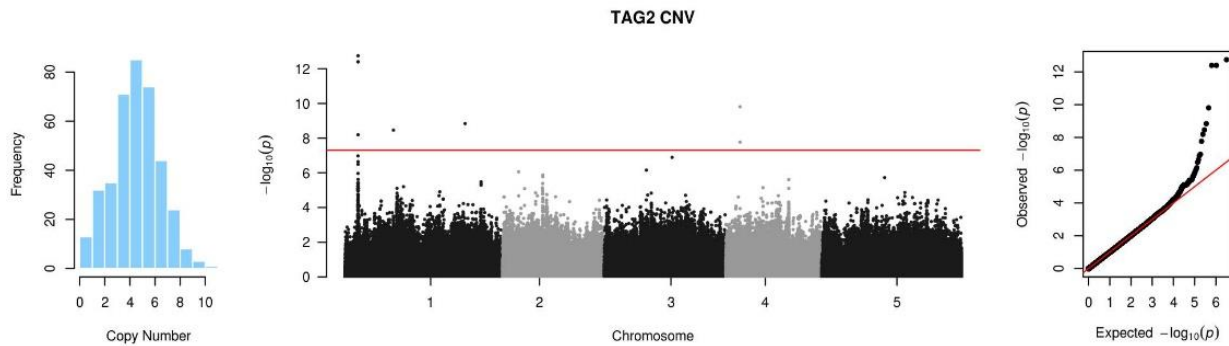
TE	GWAS associated interval	Leading SNP	Type of association	P-value			MAF	Candidate gene(s)
				Joined	Worldwide	Sweden		
META1	Chr1:16538277-16538279	Chr1-16538278	TRANS	7.15E-09	NA	5.94E-09	0.156	AT1G43765
META1	Chr2:1825193-1825195	Chr2-1825194	C/S	1.38E-08	4.24E-04	4.02E-07	0.238	



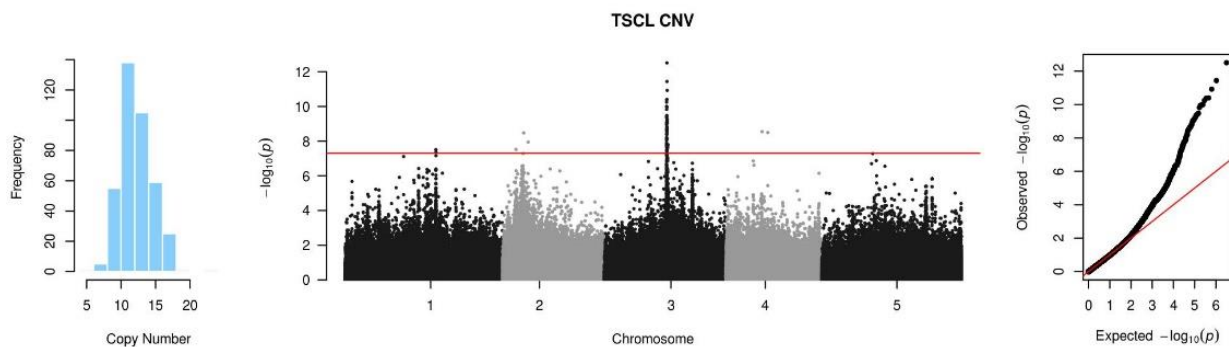
TE	GWAS associated interval	Leading SNP	Type of association	P-value			MAF	Candidate gene(s)
				Joined	Worldwide	Sweden		
TA1_AT	Chr4:1603072-2778767	Chr4-2405296	TRANS	3.97E-11	2.16E-09	NA	0.105	Centromere
TA1_AT	Chr4:6501683-6522039	Chr4-6502694	CIS	3.38E-31	1.46E-21	3.64E-13	0.315	



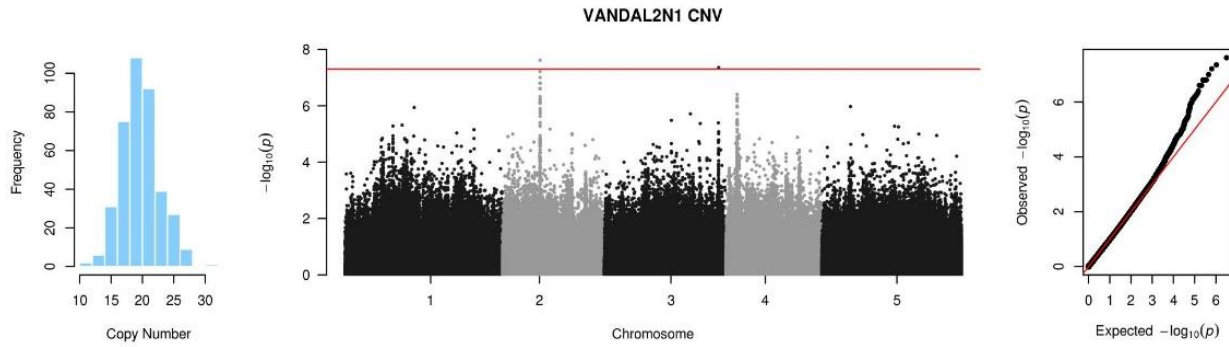
TE	GWAS associated interval	Leading SNP	Type of association	P-value			MAF	Candidate gene(s)
				Joined	Worldwide	Sweden		
TA1-2	Chr1:13374338-13959108	Chr1-13959107	CIS	1.17E-08	3.46E-01	1.22E-10	0.500	
TA1-2	Chr1:21421680-21427870	Chr1-21426003	CIS	1.78E-10	2.82E-03	3.51E-11	0.331	
TA1-2	Chr2:6047365-6202913	Chr2-6098822	TRANS	2.41E-32	1.80E-15	1.08E-17	0.277	AT2G14255, AT2G14260, AT2G14270, AT2G14282, AT2G14285, AT2G14288, AT2G14289, AT2G14290, AT2G14365, AT2G14378, AT2G14390, AT2G14440, AT2G14460, AT2G14500, AT2G14510, AT2G14520, AT2G14530, AT2G14540
TA1-2	Chr3:16053230-16053253	Chr3-16053231	TRANS	1.78E-09	NA	4.23E-08	0.064	AT3G44400
TA1-2	Chr4:4231227-4231267	Chr4-4231228	TRANS	1.15E-13	8.77E-12	2.25E-04	0.144	Centromere



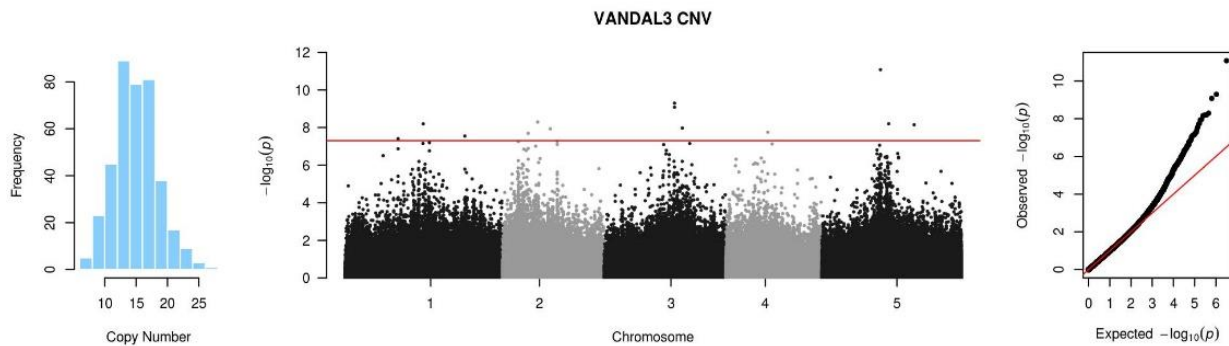
TE	GWAS associated interval	Leading SNP	Type of association	P-value			MAF	Candidate gene(s)
				Joined	Worldwide	Sweden		
TAG2	Chr1:2540827-2546070	Chr1-2540828	TRANS	1.81E-13	8.71E-11	7.25E-05	0.423	AT1G08130
TAG2	Chr1:9386433-9386435	Chr1-9386434	TRANS	3.47E-09	6.03E-04	5.61E-06	0.162	AT1G27000, AT1G27008, AT1G27020, AT1G27030, AT1G27040, AT1G27045, AT1G27050, AT1G27060
TAG2	Chr1:23242799-23242801	Chr1-23242800	CIS	1.44E-09	NA	2.67E-10	0.254	
TAG2	Chr4:2790842-2791555	Chr4-2790843	CIS	1.56E-10	4.06E-07	3.63E-04	0.490	



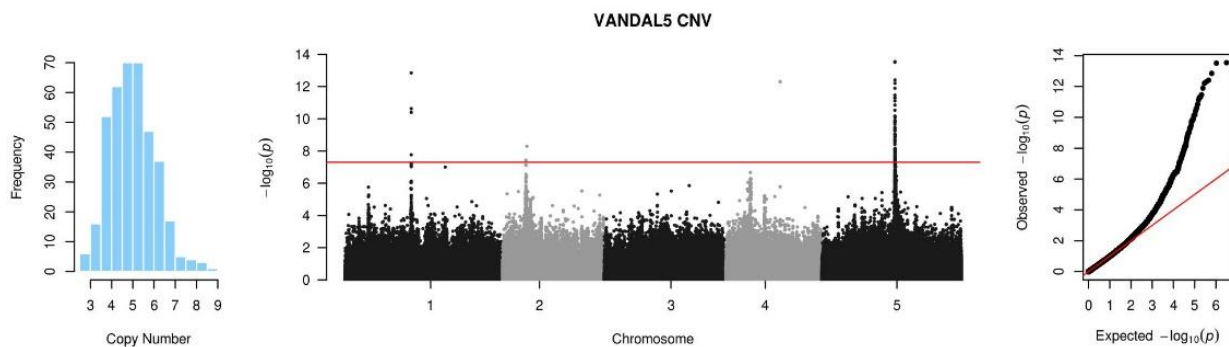
TE	GWAS associated interval	Leading SNP	Type of association	P-value			MAF	Candidate gene(s)
				Joined	Worldwide	Sweden		
TSCL	Chr1:17576803-17576805	Chr1-17576804	TRANS	3.08E-08	1.54E-05	1.12E-03	0.438	AT1G47740, AT1G47750, AT1G47760, AT1G47765, AT1G47740, AT1G47750, AT1G47760, AT1G47765
TSCL	Chr2:2644617-2644619	Chr2-2644618	TRANS	2.99E-08	2.01E-07	1.33E-02	0.500	AT2G06645
TSCL	Chr2:4129746-4129748	Chr2-4129747	TRANS	3.37E-09	1.91E-07	1.95E-02	0.382	AT2G10602
TSCL	Chr2:4997864-4997866	Chr2-4997865	TRANS	1.13E-08	2.32E-09	NA	0.241	AT2G12400
TSCL	Chr3:12042050-12343556	Chr3-12117064	CIS	3.11E-13	1.58E-08	4.66E-07	0.387	
TSCL	Chr4:7062242-7062244	Chr4-7062243	TRANS	2.85E-09	2.45E-09	NA	0.223	AT4G11670, AT4G11680, AT4G11690, AT4G11700, AT4G11720, AT4G11730, AT4G11740
TSCL	Chr4:8148311-8148313	Chr4-8148312	TRANS	3.19E-09	1.21E-09	NA	0.226	AT4G14140 (MET2a)



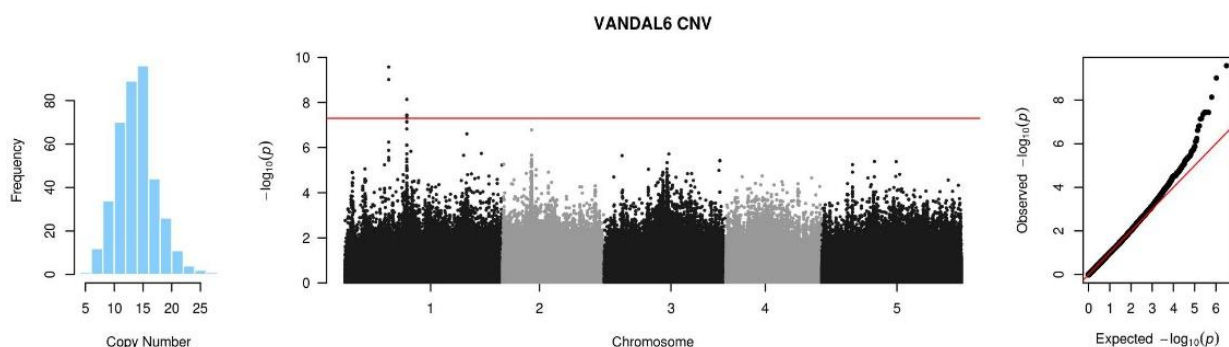
TE	GWAS associated interval	Leading SNP	Type of association	P-value			MAF	Candidate gene(s)
				Joined	Worldwide	Sweden		
VANDAL2N1	Chr2:7287475-7287477	Chr2-7287476	CIS	2.42E-08	1.66E-06	2.72E-03	0.100	



TE	GWAS associated interval	Leading SNP	Type of association	P-value			MAF	Candidate gene(s)
				Joined	Worldwide	Sweden		
VANDAL3	Chr1:15141763-15141765	Chr1-15141764	TRANS	6.41E-09	1.42E-07	NA	0.136	AT1G62570, AT1G62580, AT1G62590, AT1G62600, AT1G62610, AT1G62620, AT1G62630
VANDAL3	Chr1:23179645-23179647	Chr1-23179646	TRANS	2.84E-08	5.69E-07	5.28E-02	0.328	AT1G62570, AT1G62580, AT1G62590, AT1G62600, AT1G62610, AT1G62620, AT1G62630
VANDAL3	Chr2:4999449-4999451	Chr2-4999450	TRANS	2.02E-08	3.40E-08	NA	0.131	AT2G12400
VANDAL3	Chr2:6822456-6822458	Chr2-6822457	TRANS	5.07E-09	1.71E-08	NA	0.328	AT2G15620, AT2G15630, AT2G15640, AT2G15660, AT2G15670, AT2G15680, AT2G15690
VANDAL3	Chr2:9281325-9281327	Chr2-9281326	TRANS	1.16E-08	9.39E-08	NA	0.182	AT2G21710, AT2G21720, AT2G21725, AT2G21727, AT2G21730, AT2G21740, AT2G21750, AT2G21760, AT2G21770, AT2G21780
VANDAL3	Chr3:13582231-13582240	Chr3-13582232	TRANS	8.30E-10	7.51E-09	NA	0.141	Centromere
VANDAL3	Chr3:15074728-15074730	Chr3-15074729	TRANS	1.06E-08	9.15E-08	NA	0.167	AT3G43083
VANDAL3	Chr4:8148311-8148313	Chr4-8148312	TRANS	1.76E-08	1.90E-07	NA	0.226	AT4G14140 (MET2a)
VANDAL3	Chr5:11344169-11344171	Chr5-11344170	TRANS	8.34E-12	3.65E-12	1.77E-01	0.408	Centromere
VANDAL3	Chr5:12931127-12931129	Chr5-12931128	TRANS	6.34E-09	4.50E-07	1.65E-03	0.362	Centromere
VANDAL3	Chr5:17851103-17851105	Chr5-17851104	TRANS	7.04E-09	2.03E-08	1.25E-01	0.192	AT5G44290, AT5G44300, AT5G44306, AT5G44310, AT5G44316, AT5G44320, AT5G44330, AT5G44340

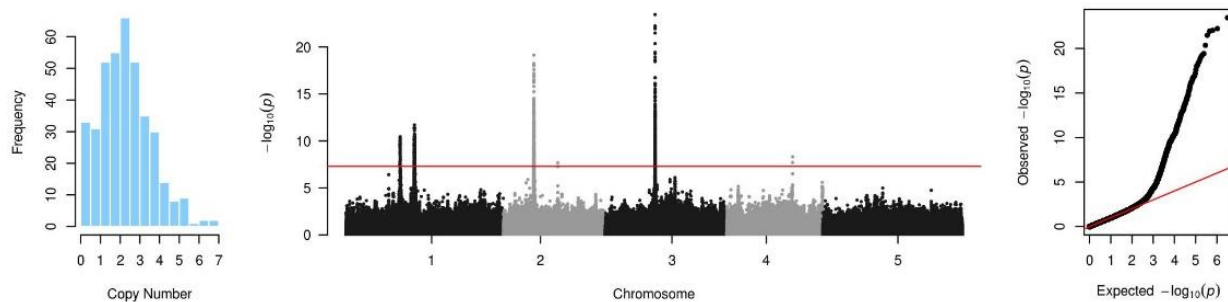


TE	GWAS associated interval	Leading SNP	Type of association	P-value			MAF	Candidate gene(s)
				Joined	Worldwide	Sweden		
VANDAL5	Chr1:12818394-12828989	Chr1-12818395	CIS	1.40E-13	2.62E-08	7.05E-07	0.431	
VANDAL5	Chr2:4737737-4737739	Chr2-4737738	TRANS	5.02E-09	3.31E-07	4.82E-03	0.118	AT2G11778, AT2G11810
VANDAL5	Chr4:10536648-10536650	Chr4-10536649	CIS	4.94E-13	2.47E-10	1.50E-04	0.287	
VANDAL5	Chr5:14113255-14113257	Chr5-14113256	TRANS	7.55E-09	3.58E-04	9.64E-08	0.462	AT5G35950, AT5G35960, AT5G35970



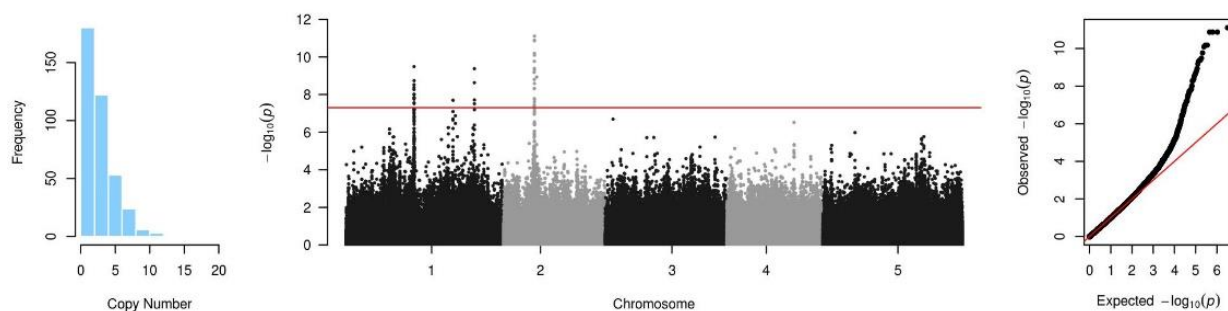
TE	GWAS associated interval	Leading SNP	Type of association	P-value			MAF	Candidate gene(s)
				Joined	Worldwide	Sweden		
VANDAL6	Chr1:8461393-8461722	Chr1-8461394	CIS	9.70E-10	4.17E-05	1.46E-06	0.418	
VANDAL6	Chr1:11960663-11960665	Chr1-11960664	TRANS	7.33E-09	1.11E-03	2.52E-06	0.282	AT1G32970, AT1G32975, AT1G32980, AT1G32990, AT1G32992, AT1G33010, AT1G33020, AT1G33030, AT1G33040, AT1G33050

VANDAL13 CNV



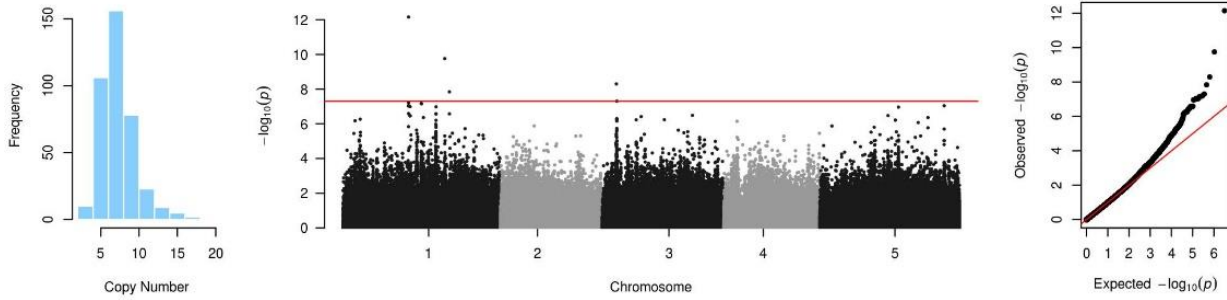
TE	GWAS associated interval	Leading SNP	Type of association	P-value			MAF	Candidate gene(s)
				Joined	Worldwide	Sweden		
VANDAL13	Chr1:10425512-10511828	Chr1-10452544	CIS	1.00E-10	2.01E-03	1.72E-09	0.321	
VANDAL13	Chr1:13229289-13278414	Chr1-13229290	CIS	4.71E-12	1.68E-07	2.65E-07	0.195	
VANDAL13	Chr2:5875322-5908135	Chr2-5903083	CIS	7.50E-20	9.12E-11	1.13E-10	0.464	
VANDAL13	Chr2:10530058-10530060	Chr2-10530059	TRANS	2.09E-08	4.82E-05	9.67E-05	0.474	AT2G24740
VANDAL13	Chr3:9591516-9634713	Chr3-9615484	CIS	3.54E-24	2.39E-13	5.30E-12	0.472	
VANDAL13	Chr4:12727871-12749741	Chr4-12749740	TRANS	4.86E-09	NA	3.50E-06	0.067	AT4G24640, AT4G24644, AT4G24650, AT4G24660, AT4G24670, AT4G24680, AT4G24690, AT4G24700, AT4G24710, AT4G24730, AT4G24740, AT4G24750

VANDAL14 CNV



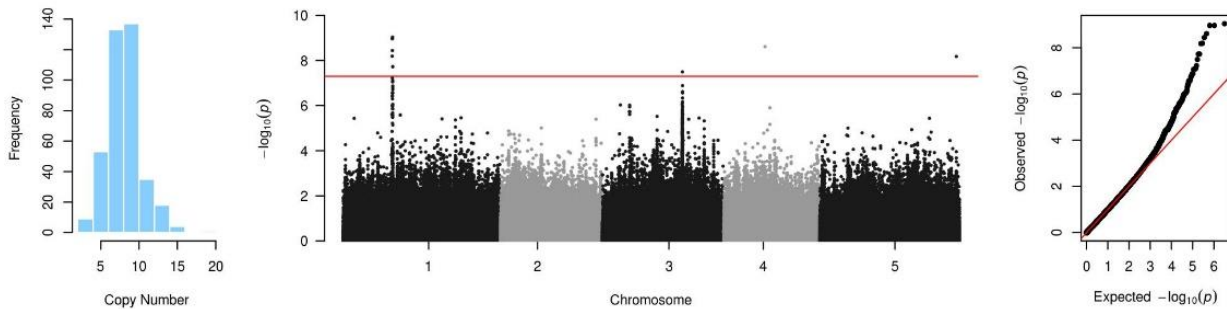
TE	GWAS associated interval	Leading SNP	Type of association	P-value			MAF	Candidate gene(s)
				Joined	Worldwide	Sweden		
VANDAL14	Chr1:20700191-20700193	Chr1-20700192	TRANS	2.00E-08	7.44E-02	3.32E-08	0.074	AT1G55420, AT1G55430, AT1G55440, AT1G55450, AT1G55460
VANDAL14	Chr1:24822615-24824216	Chr1-24823448	TRANS	4.22E-10	NA	5.65E-07	0.141	AT1G66550
VANDAL14	Chr2:5953772-6016808	Chr2-6014486	CIS	7.81E-12	3.61E-08	6.49E-06	0.249	
VANDAL14	Chr2:6449392-6449394	Chr2-6449393	TRANS	1.16E-09	1.14E-06	7.63E-05	0.085	AT2G14960

VANDAL16 CNV

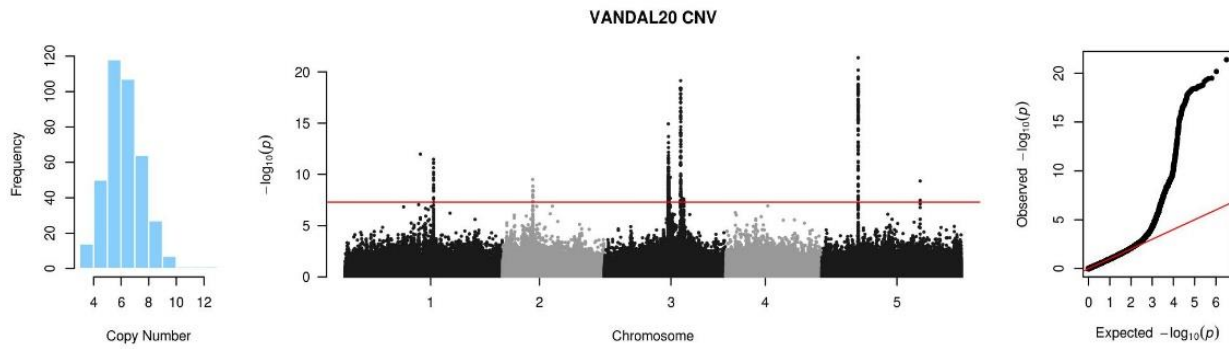


TE	GWAS associated interval	Leading SNP	Type of association	P-value			MAF	Candidate gene(s)
				Joined	Worldwide	Sweden		
VANDAL16	Chr1:12678935-12678937	Chr1-12678936	CIS	7.03E-13	4.66E-08	9.88E-06	0.438	
VANDAL16	Chr1:19668640-19668642	Chr1-19668641	TRANS	1.75E-10	NA	1.35E-06	0.051	AT1G52780, AT1G52790, AT1G52800, AT1G52810, AT1G52820, AT1G52825, AT1G52827, AT1G52830
VANDAL16	Chr1:20580746-20580748	Chr1-20580747	TRANS	1.44E-08	6.56E-09	2.11E-01	0.090	AT1G55130, AT1G55140, AT1G55150, AT1G55152, AT1G55160, AT1G55170, AT1G55175, AT1G55180, AT1G55190, AT1G55200
VANDAL16	Chr3:2718661-2718663	Chr3-2718662	TRANS	5.01E-09	1.72E-03	1.76E-06	0.336	AT3G08890, AT3G08900, AT3G08910, AT3G08920, AT3G08930, AT3G08940, AT3G08943, AT3G08947, AT3G08950

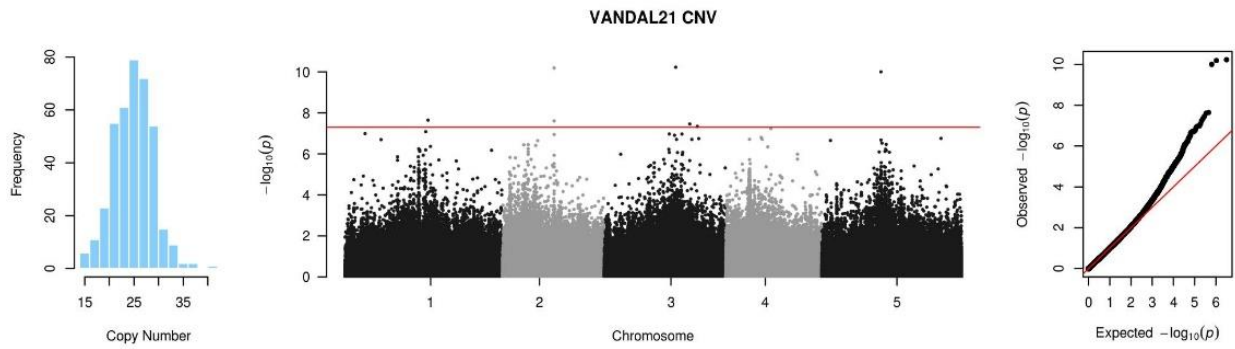
VANDAL17 CNV



TE	GWAS associated interval	Leading SNP	Type of association	P-value			MAF	Candidate gene(s)
				Joined	Worldwide	Sweden		
VANDAL17	Chr1:9512264-9629285	Chr1-9574348	TRANS	9.11E-10	2.04E-05	6.71E-06	0.097	
VANDAL17	Chr4:8006212-8006214	Chr4-8006213	TRANS	2.45E-09	1.21E-08	1.51E-02	0.072	AT4G13780, AT4G13790, AT4G13800, AT4G13810, AT4G13820, AT4G13830, AT4G13840
VANDAL17	Chr5:26385626-26385628	Chr5-26385627	TRANS	6.63E-09	1.85E-14	5.83E-01	0.056	AT5G65930, AT5G65940, AT5G65950, AT5G65960, AT5G65970, AT5G65980, AT5G65990



TE	GWAS associated interval	Leading SNP	Type of association	P-value			MAF	Candidate gene(s)
				Joined	Worldwide	Sweden		
VANDAL20	Chr1:14600154-14600156	Chr1-14600155	TRANS	1.06E-12	NA	1.77E-07	0.100	
VANDAL20	Chr1:17133749-17146953	Chr1-17135470	TRANS	6.90E-12	7.17E-06	3.40E-08	0.351	AT1G45201, AT1G45207, AT1G45215, AT1G45221, AT1G45223, AT1G45229, AT1G45231, AT1G45233, AT1G45234, AT1G45243
VANDAL20	Chr2:5860912-5905408	Chr2-5860913	TRANS	3.13E-10	2.88E-10	4.28E-02	0.064	AT2G13950, AT2G13960, AT2G13980, AT2G14000, AT2G14045, AT2G14050, AT2G14060
VANDAL20	Chr3:12377529-12448562	Chr3-12395623	TRANS	1.17E-15	2.18E-08	4.39E-11	0.185	AT3G30768, AT3G30769, AT3G30770, AT3G30775
VANDAL20	Chr3:12536059-12536061	Chr3-12536060	TRANS	2.98E-08	2.24E-07	2.94E-01	0.218	AT3G30820
VANDAL20	Chr3:12747790-12767654	Chr3-12767653	TRANS	1.92E-10	NA	8.08E-05	0.069	AT3G31400, AT3G31401, AT3G31402
VANDAL20	Chr3:14761600-14806561	Chr3-14763896	CIS	7.16E-20	1.54E-10	7.17E-11	0.305	
VANDAL20	Chr3:15070929-15070931	Chr3-15070930	TRANS	2.06E-08	NA	2.87E-06	0.059	AT3G43083
VANDAL20	Chr3:15371779-15371781	Chr3-15371780	TRANS	2.55E-08	7.30E-04	2.19E-06	0.174	AT3G43440
VANDAL20	Chr5:7027445-7038846	Chr5-7034340	CIS	4.15E-22	1.98E-10	1.57E-15	0.479	
VANDAL20	Chr5:19019479-19019481	Chr5-19019480	TRANS	4.43E-10	5.91E-08	1.03E-03	0.333	AT5G46850, AT5G46860, AT5G46870, AT5G46871, AT5G46873, AT5G46874, AT5G46877



TE	GWAS associated interval	Leading SNP	Type of association	P-value			MAF	Candidate gene(s)
				Joined	Worldwide	Sweden		
VANDAL21	Chr1:16073091-16073093	Chr1-16073092	TRANS	2.27E-08	2.89E-08	NA	0.228	AT1G42700, AT1G42710
VANDAL21	Chr2:10001804-10002742	Chr2-10001805	CIS	6.48E-11	2.33E-06	8.92E-06	0.254	
VANDAL21	Chr3:13826287-13826289	Chr3-13826288	TRANS	5.90E-11	9.74E-10	9.59E-03	0.228	
VANDAL21	Chr5:11418711-11418713	Chr5-11418712	TRANS	9.97E-11	4.38E-09	2.08E-03	0.349	