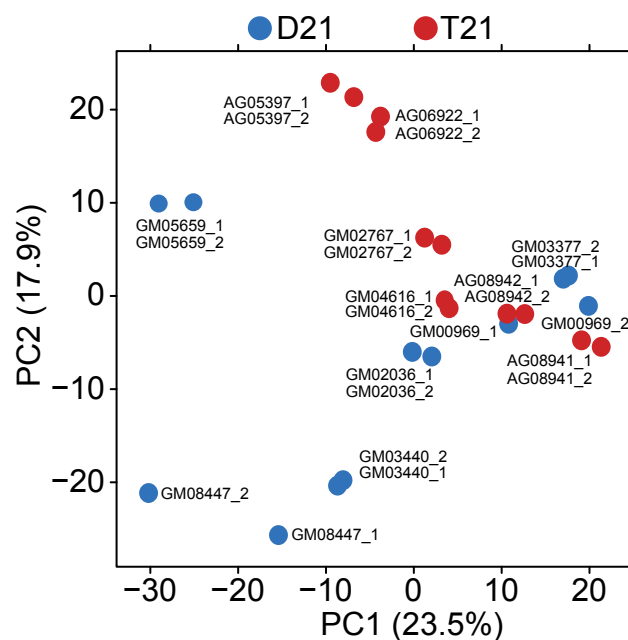


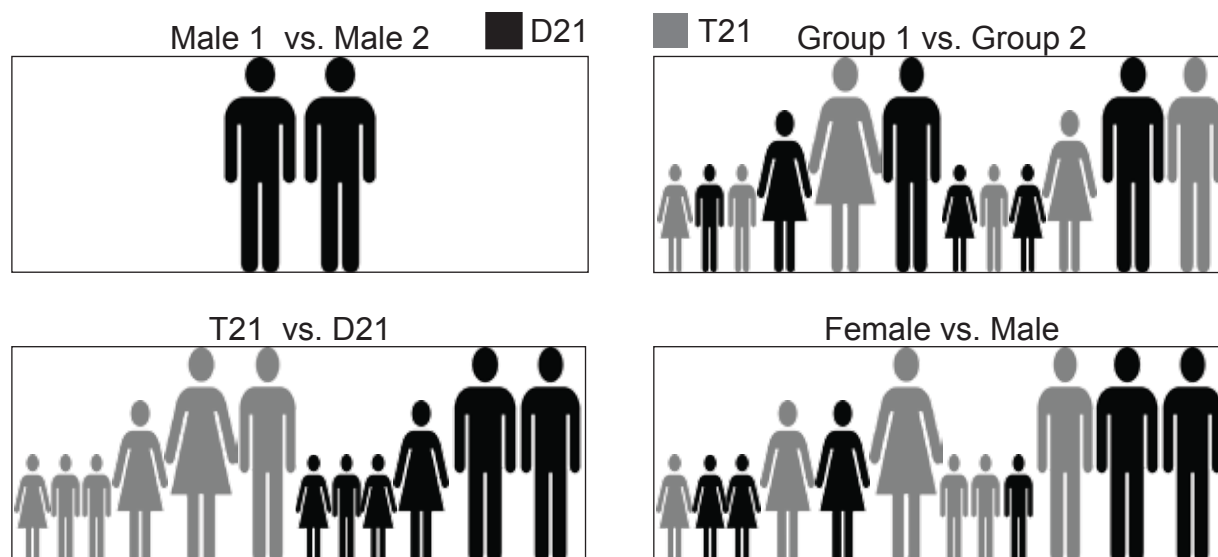
A

Line	chr21	Age	Gender	Biopsy Site
GM08447	D21	<1	F	Ear
GM05659	D21	1	M	Chest
GM00969	D21	2	F	Unspecified
GM02036	D21	11	F	Unspecified
GM03377	D21	19	M	Arm
GM03440	D21	20	M	Leg
GM04616	T21	<1	F	Unspecified
AG05397	T21	1	M	Thorax
AG06922	T21	2	M	Thorax/Abdomen
GM02767	T21	14	F	Unspecified
AG08941	T21	19	F	Arm
AG08942	T21	21	F	Arm

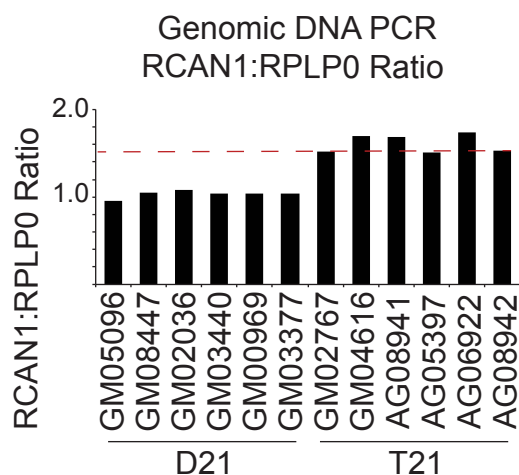
B



C



D



E

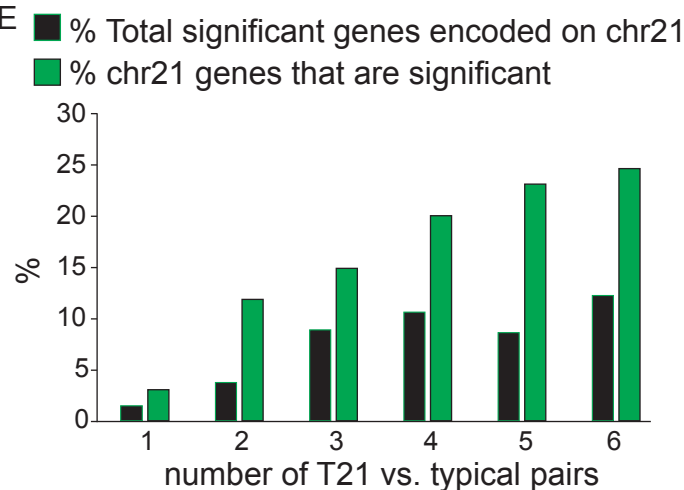


Figure 1 – figure supplement 1. T21 and D21 fibroblast RNA-seq. (A) Description of fibroblast cell lines used in this study. (B) Principal component analysis (PCA) of fibroblast RNA-seq samples demonstrates tight grouping of biological replicates. (C) Schematic of group comparisons. (D) PCR of genomic DNA for the RCAN1 gene encoded on chr21 confirms T21 status. RPLP0 is a control gene encoded on chr12. (E) Bar graph displaying how numbers of differentially expressed genes (DEGs) encoded on chr21 increase with sample size.