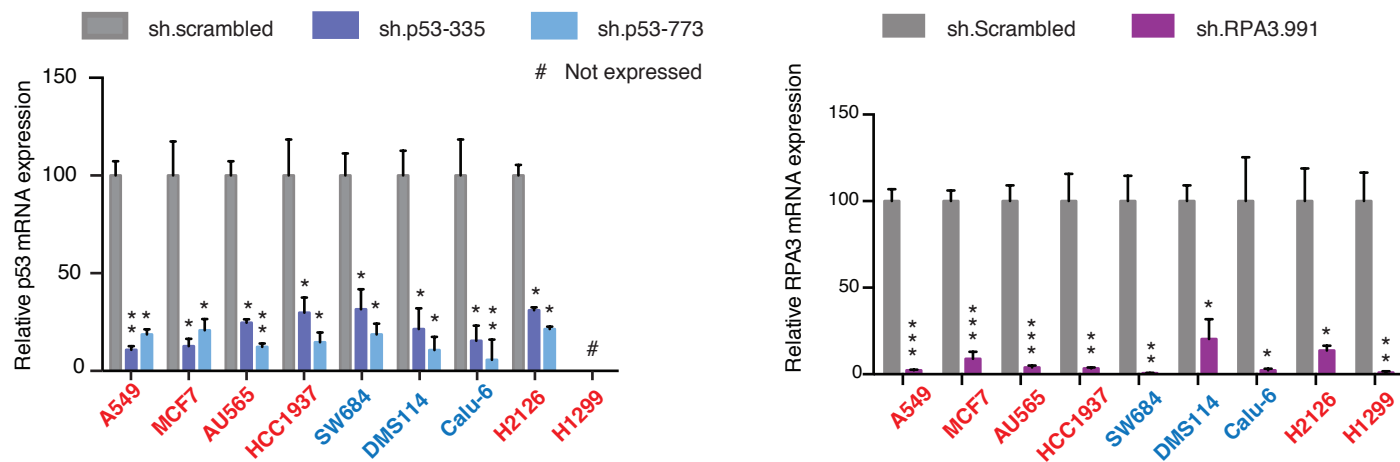


A**Figure 3- figure supplement 5.****Knockdown efficiency of indicated shRNAs in following cell lines.**

A. Knockdown efficiency of p53 and RPA3 upon shRNA infection in the indicated cell lines at 96h after infection. Each bar is the average of 3 replicates and represents mRNA expression of the indicated gene relative to GAPDH. (p-value, * <0.005 , ** <0.0005 and *** <0.00005 , unpaired t-test). The sequence for each shRNA used in this study, is indicated in Supplementary File 4.