

Figure 3- figure supplement 1

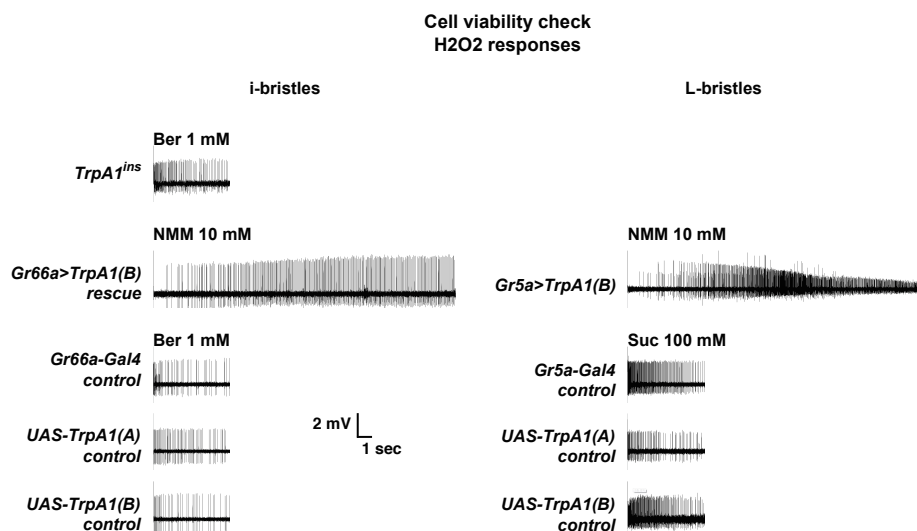


Figure 3-figure supplement 1: Cell viability check for non-responders in extracellular recording experiments. The non-responding bristle sensilla in the experiments examining H₂O₂ responsiveness were stimulated by other tastants activating corresponding cells. For i- and L-bristles, 1 mM berberine and 100 mM sucrose were used, respectively. Non-responder cells expressing TRPA1 channels were tested with electrophilic NMM that commonly activates TRPA1s.