

Figure 6-figure supplement 3

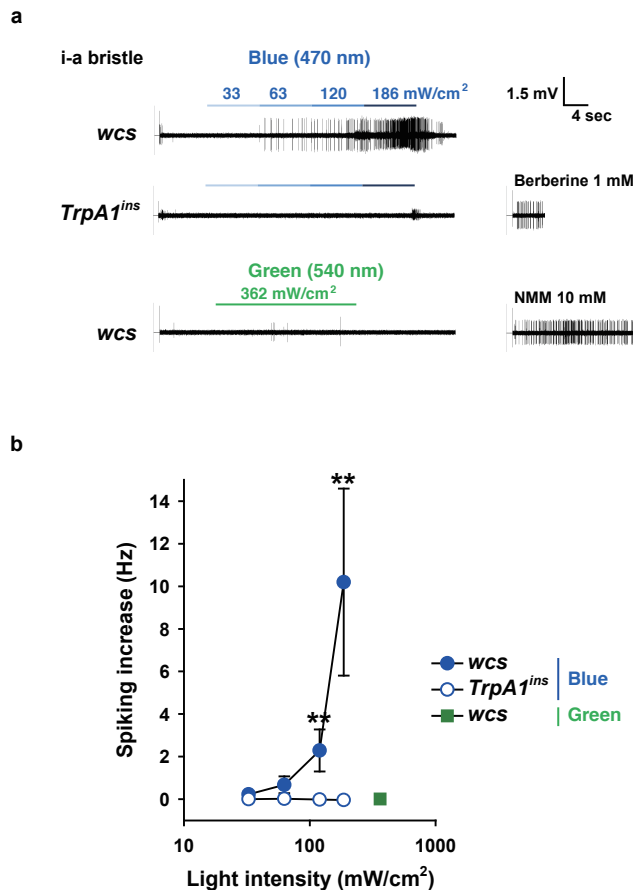


Figure 6-figure supplement 3: Blue but not green light is capable of activating taste neurons depending on *TrpA1*. (a) Increasing intensities of blue light at 470 nm were illuminated as indicated to i-a bristles of WT and *TrpA1^{ins}*. Green light did not elicit action potentials at a much higher intensity (bottom). (b) Averaged data (n=5-8). **: p<0.01, ***: p<0.001, Mann-Whitney test between WT and *TrpA1^{ins}*.