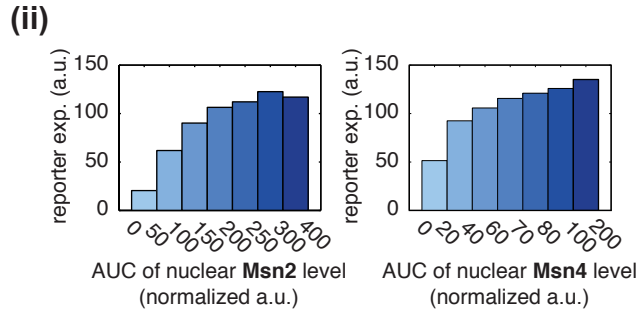
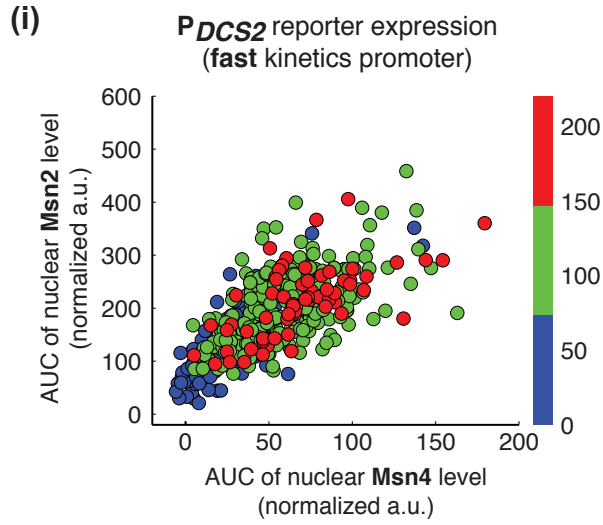
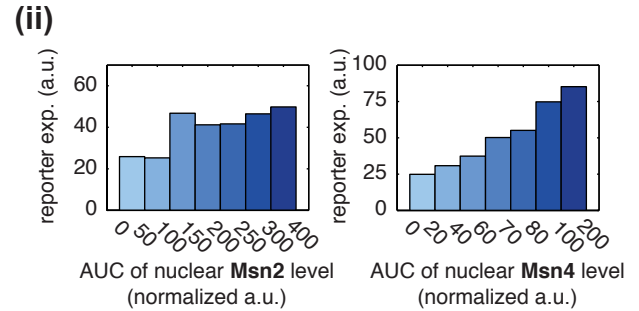
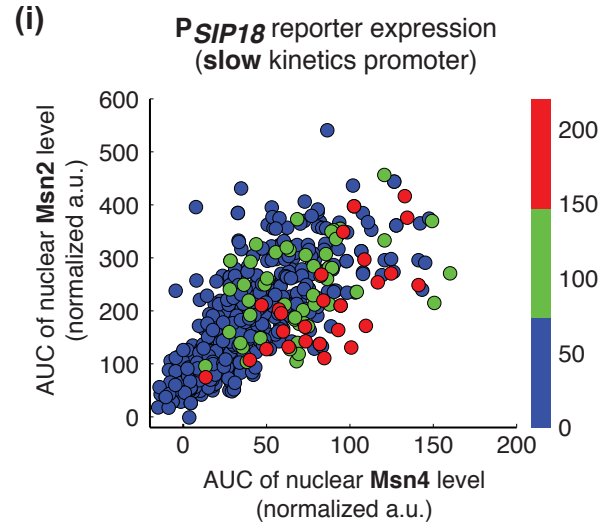


## A inhibitor inputs



## B inhibitor inputs



**Figure 3 - figure supplement 5. Relationship between reporter gene expression and the area-under-the-curve (AUC) of nuclear TF levels in response to 30-min inhibitor inputs.** Single-cell data from Figure 3 were analyzed to show the relationship of (A) the fast kinetics promoter  $P_{DCS2}$  or (B) the slow kinetics promoter  $P_{SIP18}$  reporter expression with the AUC of Msn2 and Msn4 nuclear translocation. The AUC is calculated as the sum of TF nuclear levels for each single-cell time trace (data points taken every two minutes). (i) Scatter plots showing single-cell distributions; (ii) Bar graphs showing average level of gene expression in single cells binned based on their TF AUCs.