

Figure 2-figure supplement 2

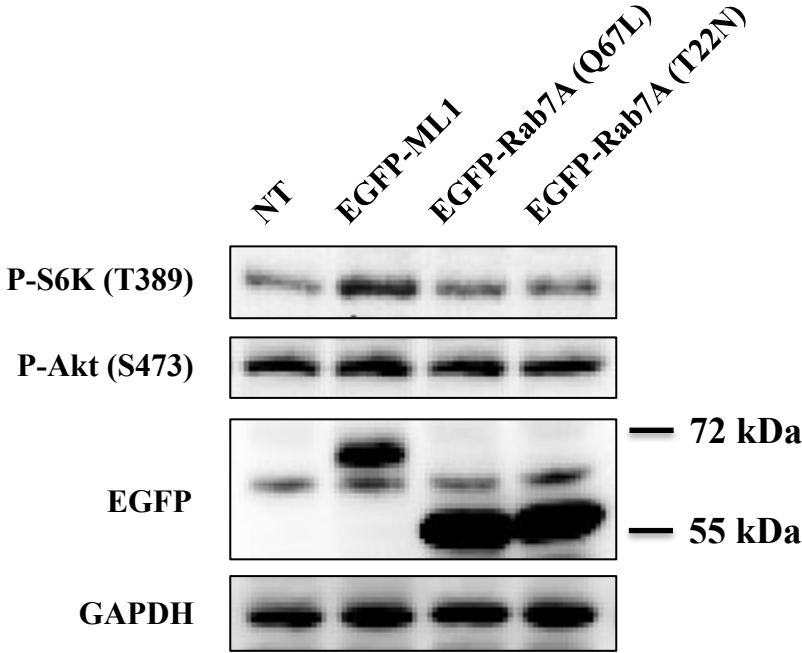


Figure 2-figure supplement 2. Effects of constitutively active or dominant negative Rab 7A. HEK293T cells were transfected with EGFP-ML1, EGFP-Rab7A (Q67L) or EGFP-Rab7A (T22N). After 19 hours, the cells transfected with EGFP-ML1 were treated with MLSA1 (20 μ M) for 1 hour. Cells were lysed and subjected to immunoblotting.