

Figure 3-figure supplement 1

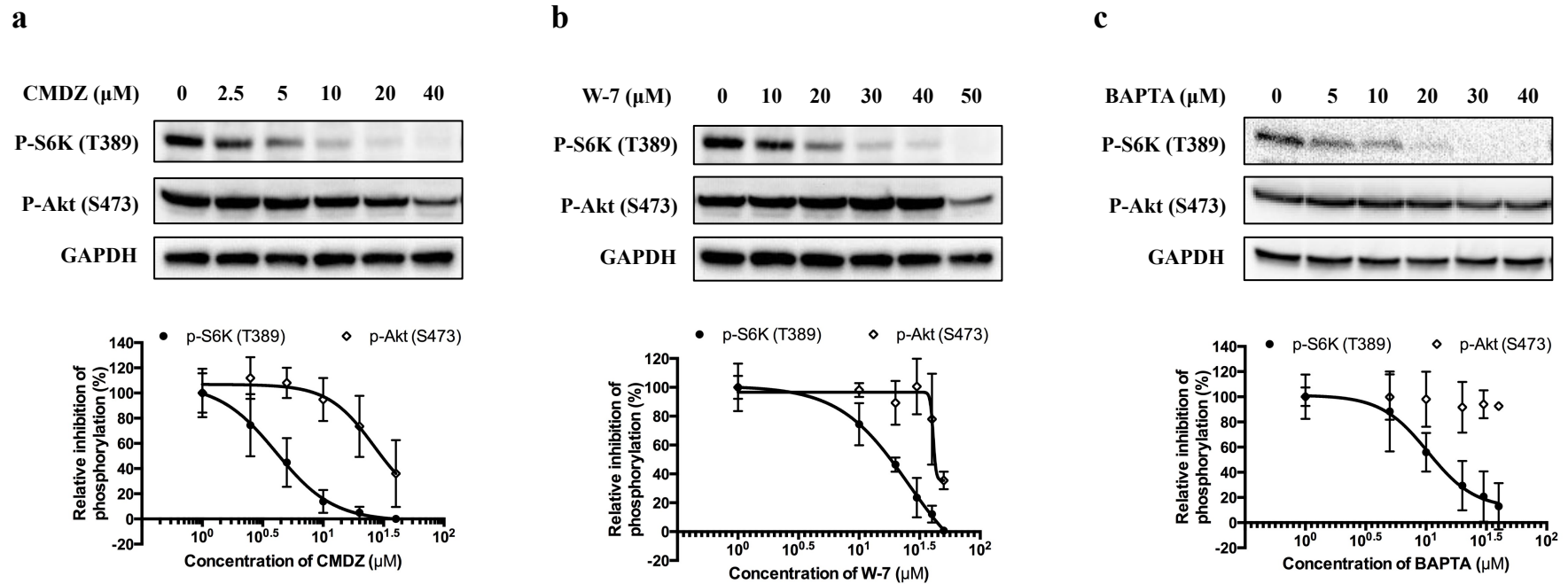


Figure 3-figure supplement 1. Effects of calmodulin antagonist **(a)** calmidazolium (CMDZ), **(b)** W-7 and **(c)** cytosolic Ca^{2+} chelator BAPTA-AM on phosphorylation state of S6K (T389) and Akt (S473). HEK293T cells were treated with different concentrations of indicated compound for 1 hr. The phosphorylation state of S6K and Akt was analyzed by immunoblotting. The plots show the dose-response curve of CMDZ, W-7 and BAPTA normalized by total S6K, respectively.