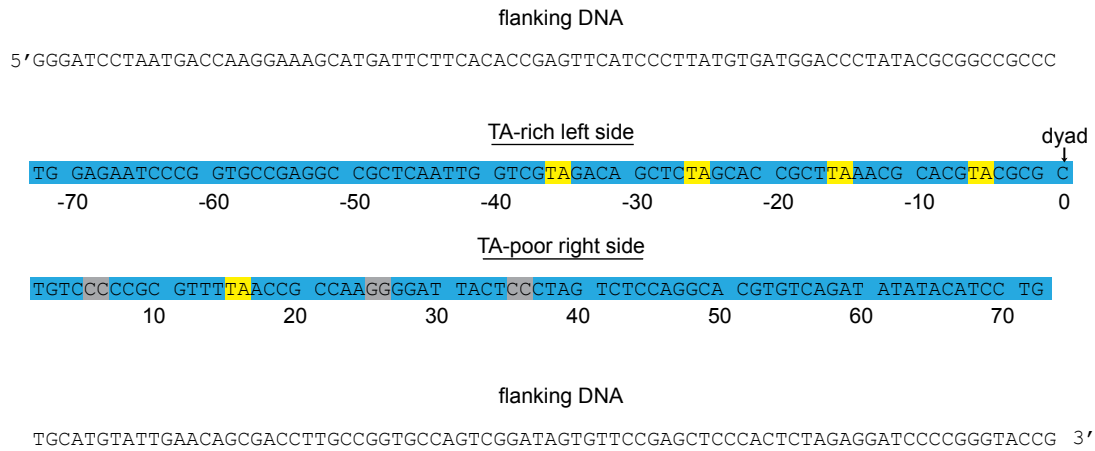


Widom 601 nucleosome positioning sequence



- 145 bp histone core binding
- TA step positions with TA
- TA step positions with non-TA

Figure 2 - Supplement 2.

Sequence and orientation of the Widom 601 sequence used in this study.

Shown is the core 145 bp histone binding region of the 601 (blue) as well as flanking DNA. Numbering gives the distances from the dyad (zero).