

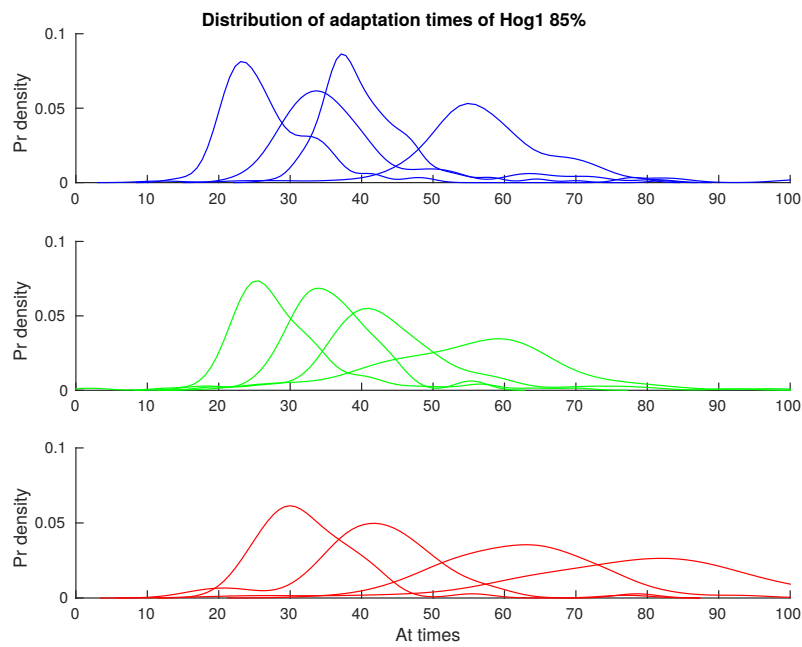
A

Figure 2—supplement 2: Distributions of the adaptation time of Hog1 for different step inputs. Single-cell distributions of the adaptation time of Hog1 (time to adapt to 85% of the maximum value) for step inputs of 0.6, 0.8, 1 and 1.2M sorbitol. Adaptation times were found from the experiments of Fig. 2—supplement 1 and the distributions used to calculate the mutual information in Fig. 2D.